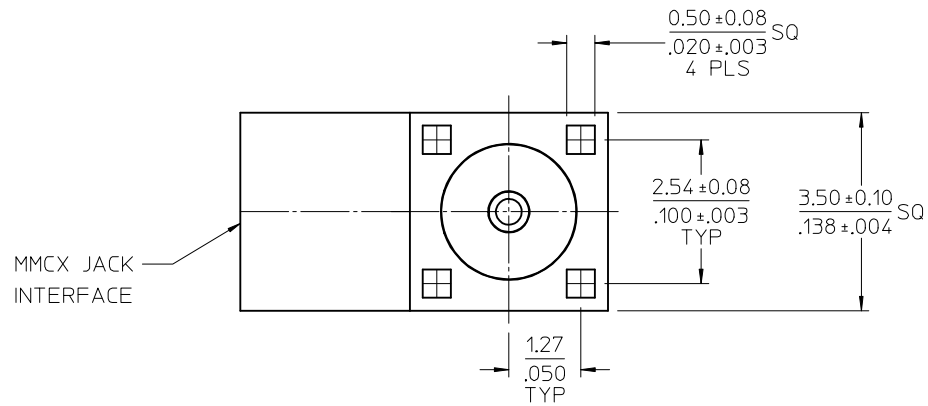
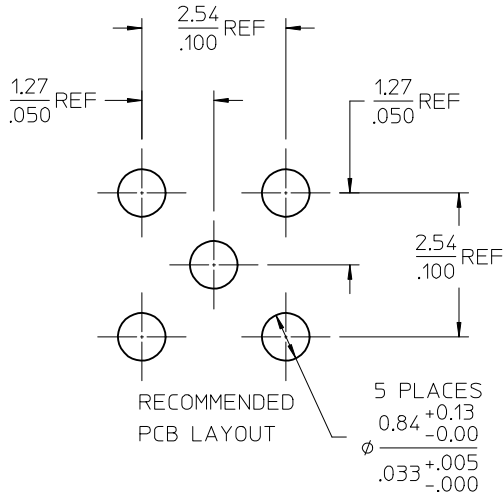
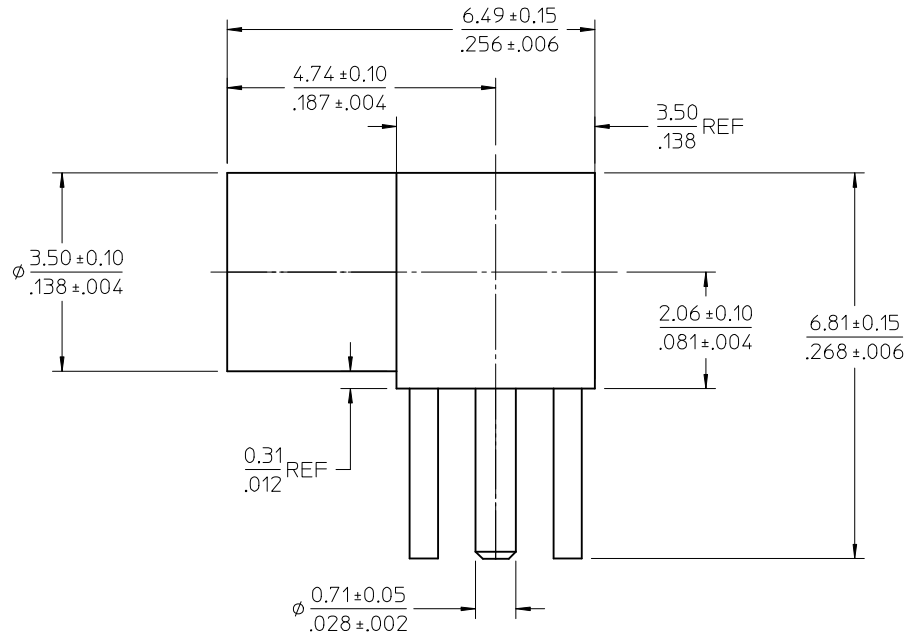
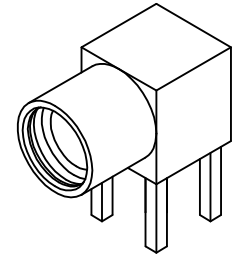


MATERIALS AND FINISHES

BODY: BRASS
PLATED SEE TABLE

CENTER: CONTACT BERYLLIUM COPPER
PLATED GOLD

INSULATOR: TEFLON



73415-1004	GOLD (COMMERCIAL)	TAPE & REEL
73415-1003	TRI-M	TRAY
73415-1002	GOLD (COMMERCIAL)	ONE PER BAG
73415-1001	GOLD (COMMERCIAL)	TRAY
73415-1000	GOLD (MILITARY)	TRAY
PART NO.	BODY PLATING	PACKAGING

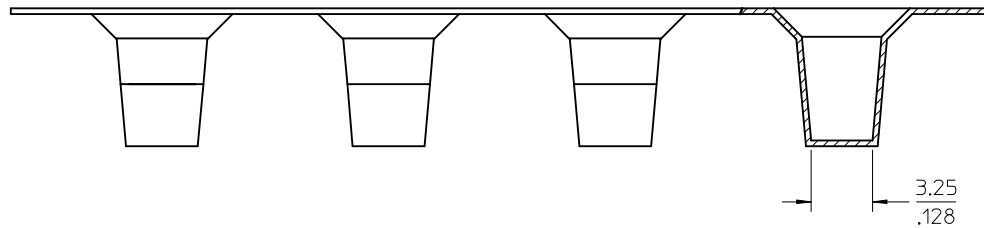
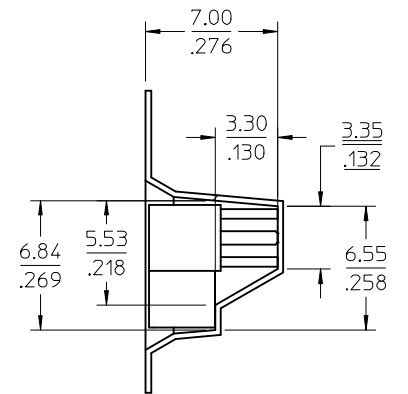
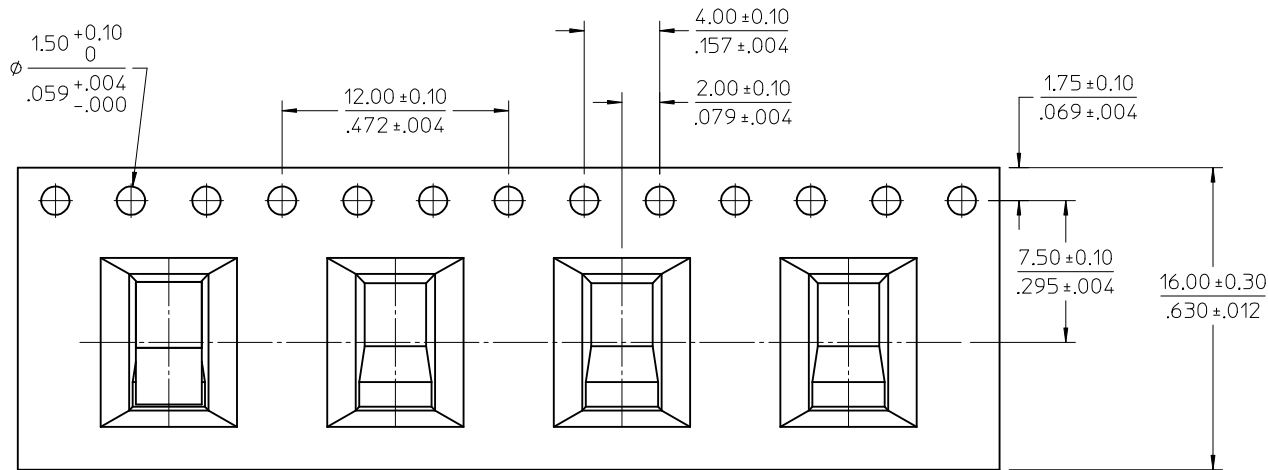
PS-89675-1920	ELECTRICAL/MECHANICAL
SPECIFICATION	DESCRIPTION

CHG: 1000/-1001/-1003 PKG TRAY WAS BULK PER RF15-E198	EC NO: URF2015-0621	DRWN: CME102	2015/05/07
CHKD:	APPR: YCHENG	2015/05/15	
REV	DESCRIPTION		
D5			

QUALITY SYMBOLS	GENERAL TOLERANCES (UNLESS SPECIFIED)
▽=0	mm INCH
▽=0	4 PLACES ± --- ± ---
▽=0	3 PLACES ± --- ± ---
	2 PLACES ± --- ± ---
	1 PLACE ± --- ± ---
	0 PLACE ± ±
	ANGULAR ± 2 °
	DRAFT WHERE APPLICABLE MUST REMAIN WITHIN DIMENSIONS

DIMENSION STYLE	SCALE
MM/IN	
DRAWN BY	DATE
JM	2005/07/22
CHECKED BY	DATE
JM	2005/07/22
APPROVED BY	DATE
JDW	2005/07/22
MATERIAL NO.	DOCUMENT NO.
SEE TABLE	SD-73415-100

DESIGN UNITS	THIRD ANGLE PROJECTION
METRIC	
MMCX JACK, R/A, PCB	
50 OHMS	
MMCX-J/PCB EWR-2734	
molex	
SHEET NO.	1 OF 3

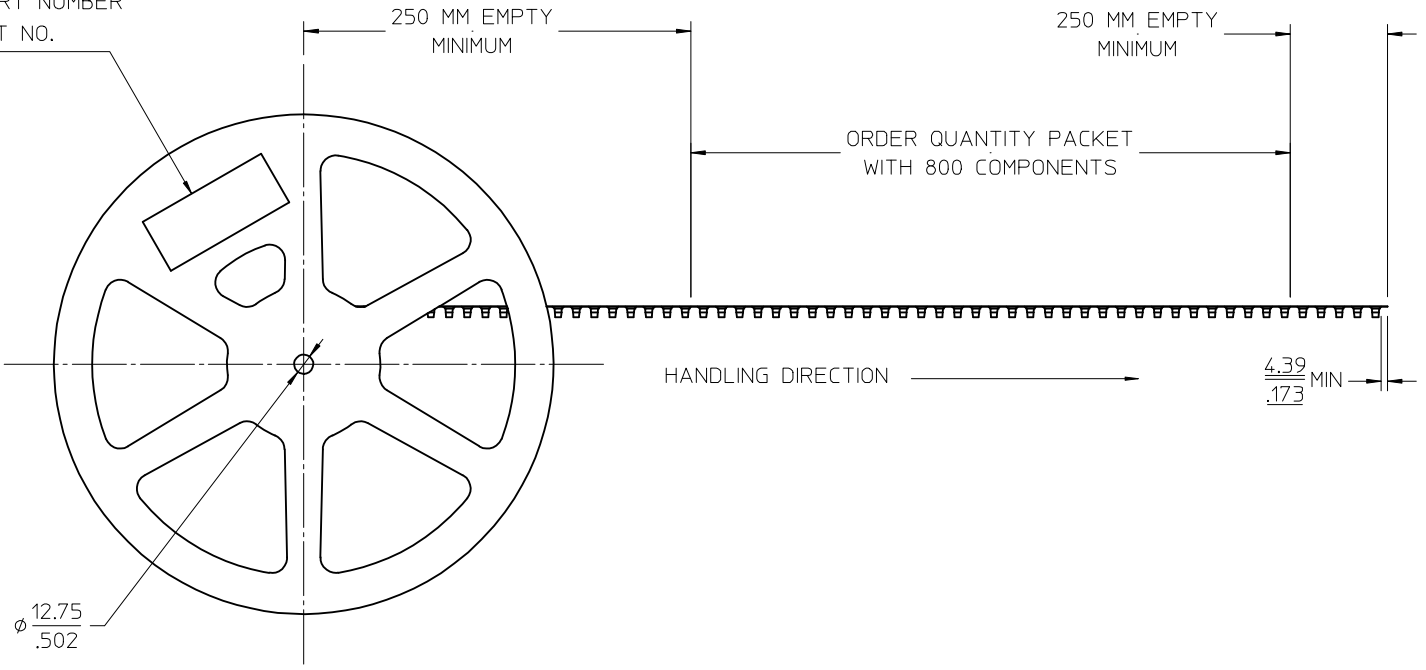
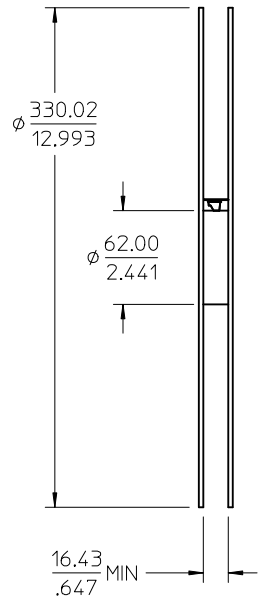


PACKING DESCRIPTION :

1. MATERIAL : PS BLACK-THICKNESS : 0.40±0.05 MM

SEE SHEET 1 IEC NO: URF2015-0621 DRAWN: CWE102 2015/05/07 CHKD: APPR: YCHENG 2015/05/15 REV: D5	QUALITY SYMBOLS 	GENERAL TOLERANCES (UNLESS SPECIFIED)		DIMENSION STYLE MM/IN	SCALE METRIC	DESIGN UNITS METRIC	THIRD ANGLE PROJECTION
		4 PLACES ± --- ± --- 3 PLACES ± --- ± --- 2 PLACES ± --- ± --- 1 PLACE ± --- ± --- 0 PLACE ± --- ± ---	mm INCH ± --- ± --- ± --- ± --- ± --- ± --- ± --- ± ---	DRAWN BY JM DATE 2005/07/22	TITLE MMCX JACK, R/A, PCB 50 OHMS MMCX-J/PCB EWR-2734	MATERIAL NO. SEE SHEET 1	DOCUMENT NO. SD-73415-100
ANGULAR ± 2 °		DRAFT WHERE APPLICABLE MUST REMAIN WITHIN DIMENSIONS					
THIS DRAWING CONTAINS INFORMATION THAT IS PROPRIETARY TO MOLEX INCORPORATED AND SHOULD NOT BE USED WITHOUT WRITTEN PERMISSION							

LABEL:
 -ORDER NO.
 -QUANTITY
 -PART NUMBER
 -LOT NO.



PACKING DESCRIPTION :
 1. COMPONENT LOAD PER 13" REEL : 800 PCS
 2. DIMENSION ARE PROVIDED FOR REFERENCE ONLY

SEE SHEET 1 EC NO: URF2015-0621 DRWN:WE102 2015/05/07 CHKD: APPR:YCHENG 2015/05/15	DESCRIPTION	QUALITY SYMBOLS
	REV	▽=0
		▽=0
		▽=0

GENERAL TOLERANCES (UNLESS SPECIFIED)
4 PLACES ± .005 ± .005
3 PLACES ± .005 ± .005
2 PLACES ± .005 ± .005
1 PLACE ± .005 ± .005
0 PLACE ± .005 ± .005
ANGULAR ± 2°
DRAFT WHERE APPLICABLE MUST REMAIN WITHIN DIMENSIONS

DIMENSION STYLE	MM/IN
DRAWN BY	DATE
JM	2005/07/22
CHECKED BY	DATE
JM	2005/07/22
APPROVED BY	DATE
JDW	2005/07/22
MATERIAL NO.	
SEE SHEET 1	

SCALE	DESIGN UNITS	THIRD ANGLE PROJECTION
	METRIC	
TITLE		
MMCX JACK, R/A, PCB		
50 OHMS		
MMCX-J/PCB EWR-2734		
molex		
DOCUMENT NO.	SHEET NO.	
SD-73415-100	3 OF 3	
THIS DRAWING CONTAINS INFORMATION THAT IS PROPRIETARY TO MOLEX INCORPORATED AND SHOULD NOT BE USED WITHOUT WRITTEN PERMISSION		