

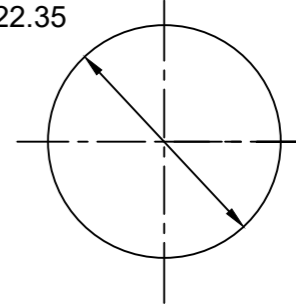
- NOTES:**
1. MATERIAL: AS NOTED
  2. FINISH: AS NOTED
  3. ELECTRICAL:
  - (B) VOLTAGE: 483V PER IEC60664  
600V PER UL2237  
CURRENT: 15A
  4. TEMP RATING: -20°TO +90°C
  5. PROTECTION: IP67 (WHEN MATED)
  6. COUPLING THREAD: 7/8-16UN
  - (B) 7. UL LISTED FILE: E258992
  8. ALL DIMS ARE FOR REFERENCE UNLESS NOTED OR TOLERANCED OTHERWISE

**PART NUMBER LEGEND**

1R4006A82M005G

FINISHED LENGTH:  
M005= 0.5 METER  
M010= 1 METER  
M100= 10 METER

Ø.880  
22.35



REF. KNOCKOUT HOLE

ITEM	DESCRIPTION	MATERIAL	FINISH
6	FLAG LABEL	VINYL	BLACK/YELLOW
5	POTTING MATERIAL	EPOXY	
4	WIRE, 14 AWG (UL1015) (B)	PVC INSULATION	SEE FACE VIEW
3	CONTACT PIN	COPPER ALLOY	GOLD PLATED
2	MALE INSERT	TPE (B)	BLACK
1	RECEPTACLE SHELL	ZINC DIE-CAST	BLACK

<p>SYMBOLS</p> <p>THIS DRAWING CONTAINS INFORMATION THAT IS PROPRIETARY TO MOLEX ELECTRONIC TECHNOLOGIES, LLC AND SHOULD NOT BE USED WITHOUT WRITTEN PERMISSION</p>				<p>THIS DRAWING CONTAINS INFORMATION THAT IS PROPRIETARY TO MOLEX ELECTRONIC TECHNOLOGIES, LLC AND SHOULD NOT BE USED WITHOUT WRITTEN PERMISSION</p>																					
<p>▽ = 0</p> <p>▽ = 0</p> <p>▽ = 0</p>		<p>INCH/MM</p> <p>SCALE</p> <p>1:1</p>		<p>CURRENT REV DESC: WIRE WAS THHN, INSERT WAS PVC, IEC VOLTAGE WAS 320, 1.11 WAS 1.10, ADD 90 DEG F FOR KEY, ADD NOTE 7</p>		<p><b>molex</b></p>																			
<p>▽ = 0</p> <p>▽ = 0</p> <p>▽ = 0</p> <p>▽ = 0</p> <p>▽ = 0</p> <p>▽ = 0</p> <p>▽ = 0</p> <p>▽ = 0</p>		<p>GENERAL TOLERANCES (UNLESS SPECIFIED)</p> <table border="1"> <thead> <tr> <th></th> <th>mm</th> <th>INCH</th> </tr> </thead> <tbody> <tr> <td>4 PLACES</td> <td>±---</td> <td>±---</td> </tr> <tr> <td>3 PLACES</td> <td>±---</td> <td>±---</td> </tr> <tr> <td>2 PLACES</td> <td>±---</td> <td>±---</td> </tr> <tr> <td>1 PLACE</td> <td>±---</td> <td>±---</td> </tr> <tr> <td>0 PLACES</td> <td>±---</td> <td>±---</td> </tr> </tbody> </table>			mm	INCH	4 PLACES	±---	±---	3 PLACES	±---	±---	2 PLACES	±---	±---	1 PLACE	±---	±---	0 PLACES	±---	±---	<p>EC NO: 626130</p> <p>DRWN: RSTONE 2019/10/22</p> <p>CHK'D: ALEON01 2019/10/24</p> <p>APPR: BWOODMAN 2019/10/31</p>		<p>MINI-CHANGE RECEPTACLE</p> <p>MALE, 4P, 14 AWG 1/2 NPT</p>	
	mm	INCH																							
4 PLACES	±---	±---																							
3 PLACES	±---	±---																							
2 PLACES	±---	±---																							
1 PLACE	±---	±---																							
0 PLACES	±---	±---																							
<p>ANGULAR TOL ± --- °</p> <p>DRAFT WHERE APPLICABLE MUST REMAIN WITHIN DIMENSIONS</p>		<p>THIRD ANGLE PROJECTION</p> <p>DRAWING</p> <p>B-SIZE</p>		<p>SERIES</p> <p>130066</p>		<p>PRODUCT CUSTOMER DRAWING</p> <p>DOCUMENT NUMBER</p> <p>SD-130066-073</p> <p>DOC TYPE/DOC PART/REVISION</p> <p>PSD 001 B</p>																			
<p>INITIAL REVISION:</p> <p>DRWN: RSTONE 2017/01/09</p> <p>APPR: BWOODMAN 2017/01/26</p>		<p>MATERIAL NUMBER</p> <p>CUSTOMER</p> <p>GENERAL MARKET</p>		<p>SHEET NUMBER</p> <p>1 OF 1</p>																					