

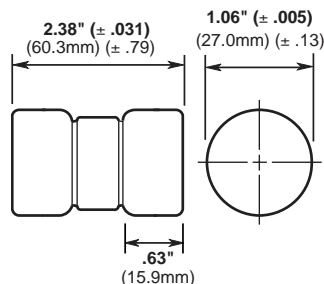
# Telpower® Fuse

## 170 Volt AC/DC, 60-150 Amps

TPJ



### Dimensional Data



### Catalog Symbol: TPJ

Power Distribution Fuses

**Ampere Rating:** 60 to 150 Amperes

**Voltage Rating:** 170 Volts AC/DC

**Interrupting Rating:** 100,000A

**Agency Approval:**

UL Recognized, File E56412, Guide JFHR2

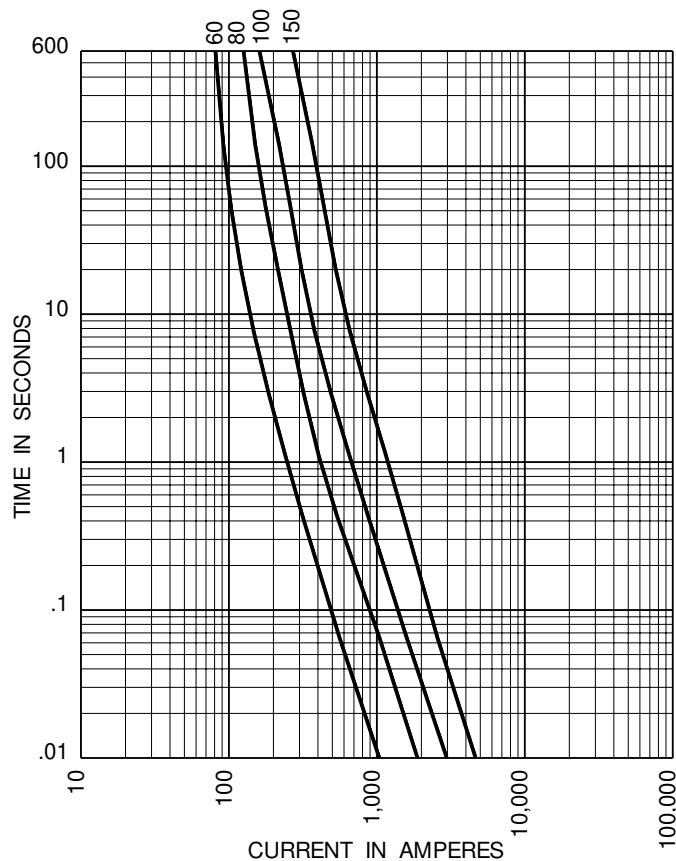
### Catalog Numbers

TPJ-60	TPJ-100
TPJ-70	TPJ-125
TPJ-80	TPJ-150
TPJ-90	—

### General Information:

- TELPOWER fuses bring modern power fuse design to the telecommunications industry.
- TELPOWER fuse line is the first to be specifically designed to meet the unique needs of DC Power Distribution Systems.
- The UL Recognized ratings of 170 Volts AC/DC and 100,000 Amps interrupting rating along with the fuse's current-limiting capability make this fuse ideal for overcurrent protection on existing DC distribution systems.
- A unique BLUE label is used on all TELPOWER fuses to designate their DC capability.
- Glass melamine tube.

### Time-Current Characteristic Curve



The only controlled copy of this BIF document is the electronic read-only version located on the Bussmann Network Drive. All other copies of this document are by definition uncontrolled. This bulletin is intended to clearly present comprehensive product data and provide technical information that will help the end user with design applications. Bussmann reserves the right, without notice, to change design or construction of any products and to discontinue or limit distribution of any products. Bussmann also reserves the right to change or update, without notice, any technical information contained in this bulletin. Once a product has been selected, it should be tested by the user in all possible applications.