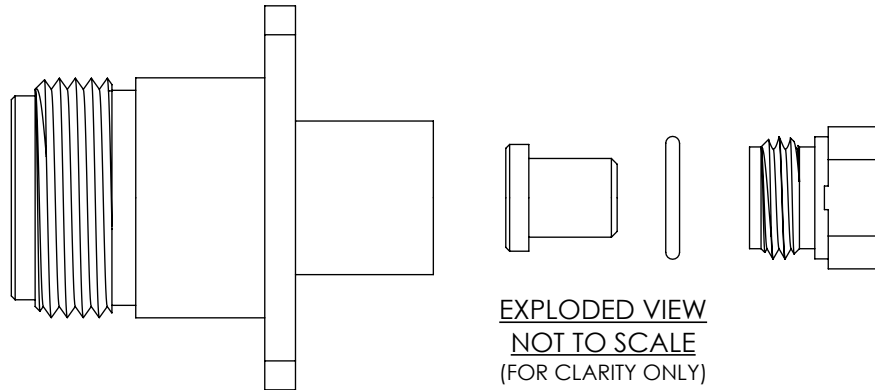
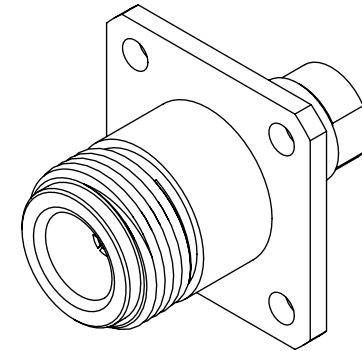
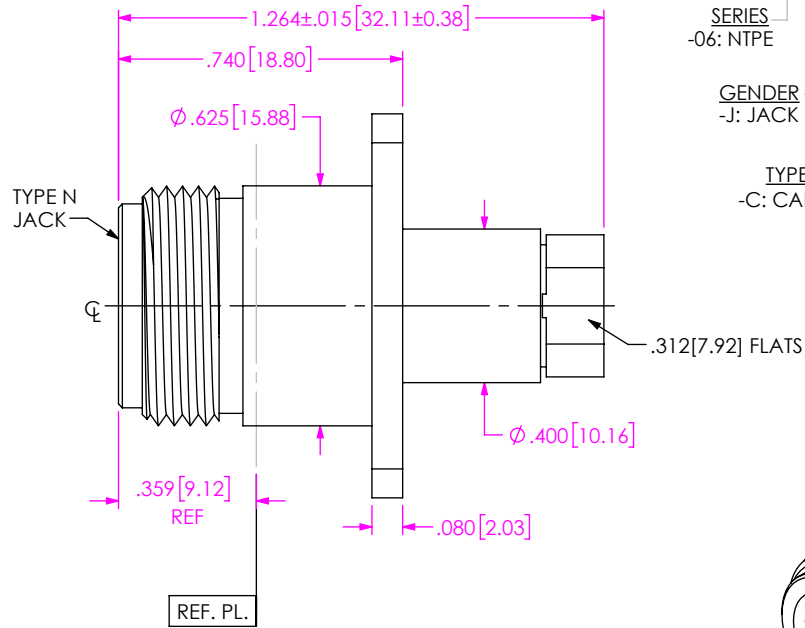
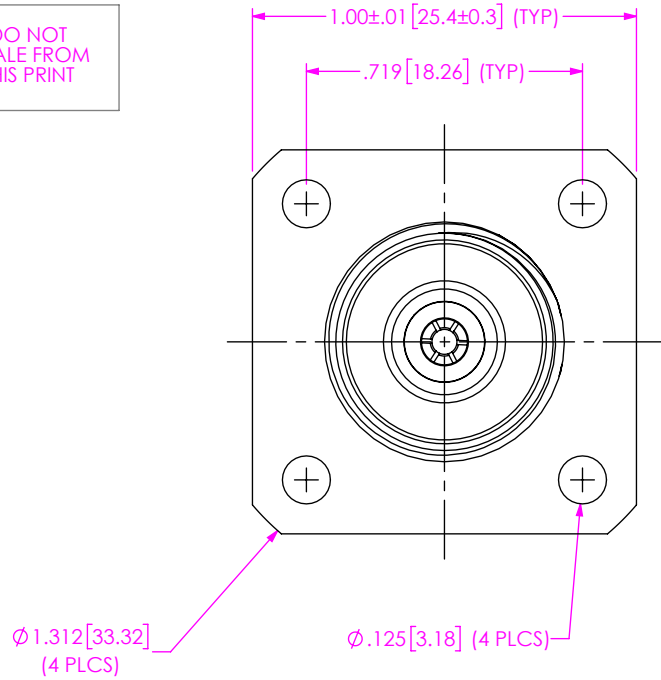


DO NOT SCALE FROM THIS PRINT

DESIGNED & DIMENSIONED IN INCHES[MILLIMETERS]

PRF06-J-C-EP-402-4S

SERIES -06: NTPE
 GENDER -J: JACK
 TYPE -C: CABLE
 TERMINATION S: SOLDER CLAMP
 ORIENTATION -4: 4 HOLE FLANGE
 CABLE TYPE -402: RG-402 SEMI-RIGID
 FINISH -EP: 50µ" EXTRA HEAVY GOLD CENTER CONTACT, PASSIVATED OUTER CONTACT



NOTES:

1. MATERIAL:

BODY, BUSHING, CLAMP NUT: STAINLESS STEEL
 CONTACT: BERYLLIUM COPPER
 SOLDER FERRULE: BRASS ALLOY
 BEAD: PEI
 INSULATORS: PTFE
 O-RING: SILICONE RUBBER

2. FINISH:

BODY, BUSHING, CLAMP NUT: PASSIVATED
 CONTACT, SOLDER FERRULE: 50µ" MIN. GOLD OVER 50µ" MIN. NICKEL PLATE

3. PCI P/N: 3370

F:\DWG\MISC\Mktg\PRF06-J-C-EP-402-4S-MKT.SLDDRW

UNLESS OTHERWISE SPECIFIED, DIMENSIONS ARE IN INCHES.
 TOLERANCES ARE:
 DECIMALS ANGLES
 .XX: ±.02[0.5] 1°
 .XXX: ±.005[0.13]
 .XXXX: ±.0005[0.013]

PROPRIETARY NOTE
 THIS DOCUMENT CONTAINS CONFIDENTIAL AND PROPRIETARY INFORMATION AND ALL DESIGN, MANUFACTURING, REPRODUCTION, USE, PATENT RIGHTS AND SALES RIGHTS ARE EXPRESSLY RESERVED BY SAMTEC, INC. THIS DOCUMENT SHALL NOT BE DISCLOSED, IN WHOLE OR PART, TO ANY UNAUTHORIZED PERSON OR ENTITY NOR REPRODUCED, TRANSFERRED OR INCORPORATED IN ANY OTHER PROJECT IN ANY MANNER WITHOUT THE EXPRESS WRITTEN CONSENT OF SAMTEC, INC.



520 PARK EAST BLVD, NEW ALBANY, IN 47150
 PHONE: 812-944-6733 FAX: 812-948-5047
 e-Mail info@SAMTEC.com code 55322

DO NOT SCALE DRAWING

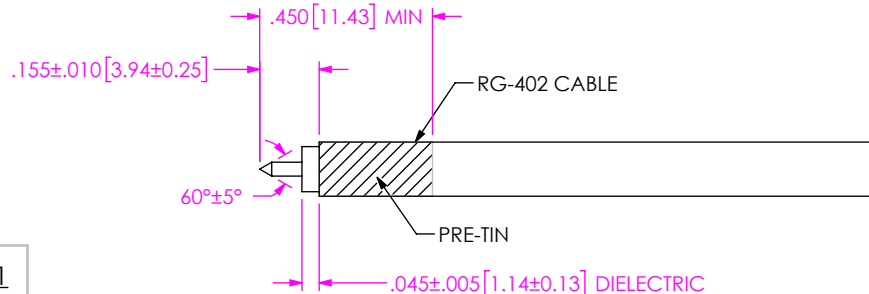
SHEET SCALE: 2:1

DESCRIPTION: TYPE N JACK, 4 HOLE FLANGE, SOLDER CLAMP FOR RG-402 CABLE

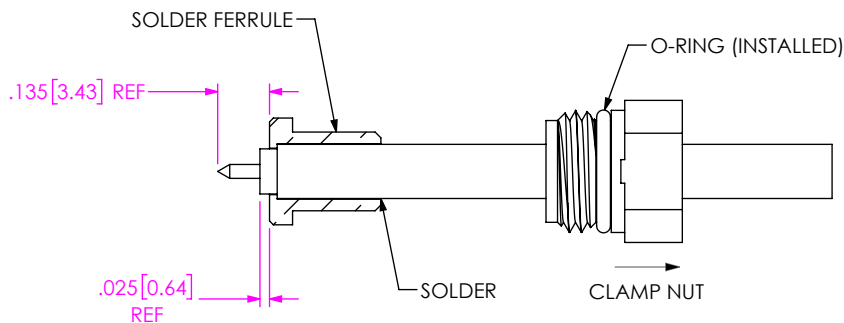
DWG. NO. PRF06-J-C-EP-402-4S

BY: CANDY W 05/18/2019 SHEET 1 OF 2

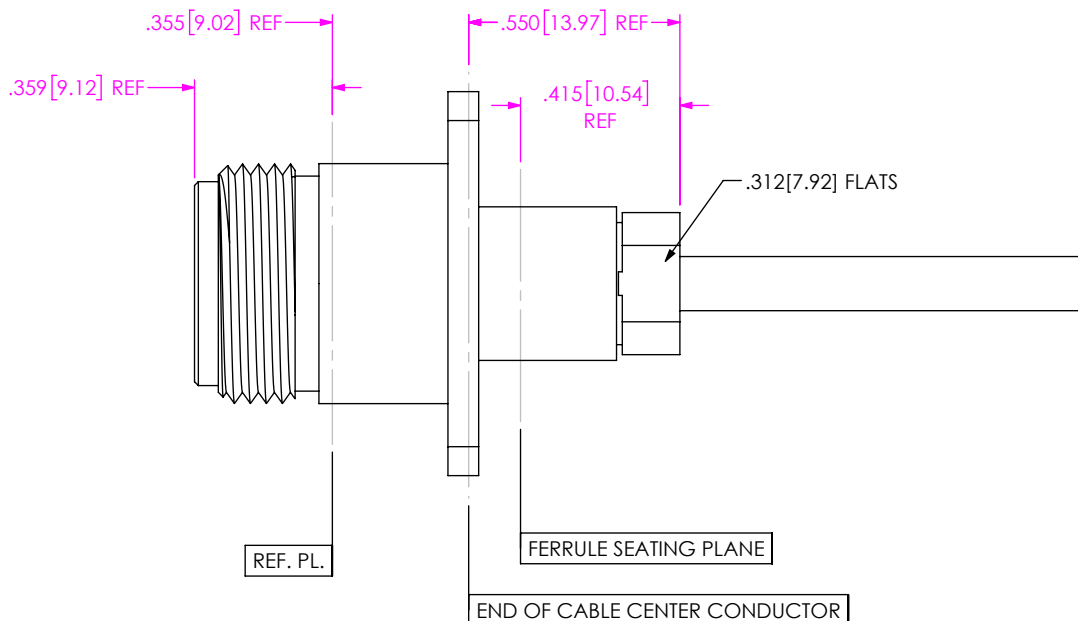
CABLE APPLICATION VIEWS



- 1A. PRE-TIN CABLE OVER LENGTH SHOWN.
- 1B. TRIM CABLE END AS SHOWN.



- 2A. SLIDE CLAMP NUT OVER CABLE IN ORIENTATION SHOWN.
- 2B. INSERT CABLE INTO SOLDER FERRULE UNTIL SEATED AND SOLDER WHERE INDICATED.



- 3. INSERT CABLE SUB-ASSEMBLY INTO CONNECTOR UNTIL SEATED AND TIGHTEN CLAMP NUT TO 25-35 IN-LBS.

DISTANCE FROM END OF CABLE CENTER COND. TO REF. PL. IS .355 (REF.)

PROPRIETARY NOTE
 THIS DOCUMENT CONTAINS CONFIDENTIAL AND PROPRIETARY INFORMATION AND ALL DESIGN, MANUFACTURING, REPRODUCTION, USE, PATENT RIGHTS AND SALES RIGHTS ARE EXPRESSLY RESERVED BY SAMTEC, INC. THIS DOCUMENT SHALL NOT BE DISCLOSED, IN WHOLE OR PART, TO ANY UNAUTHORIZED PERSON OR ENTITY NOR REPRODUCED, TRANSFERRED OR INCORPORATED IN ANY OTHER PROJECT IN ANY MANNER WITHOUT THE EXPRESS WRITTEN CONSENT OF SAMTEC, INC.

samtec
 520 PARK EAST BLVD, NEW ALBANY, IN 47150
 PHONE: 812-944-6733 FAX: 812-948-5047
 e-Mail info@SAMTEC.com code 55322

DO NOT SCALE DRAWING
 SHEET SCALE: 2:1

DESCRIPTION: TYPE N JACK, 4 HOLE FLANGE, SOLDER CLAMP FOR RG-402 CABLE

DWG. NO. PRF06-J-C-EP-402-4S

BY: CANDY W 05/18/2019 SHEET 2 OF 2