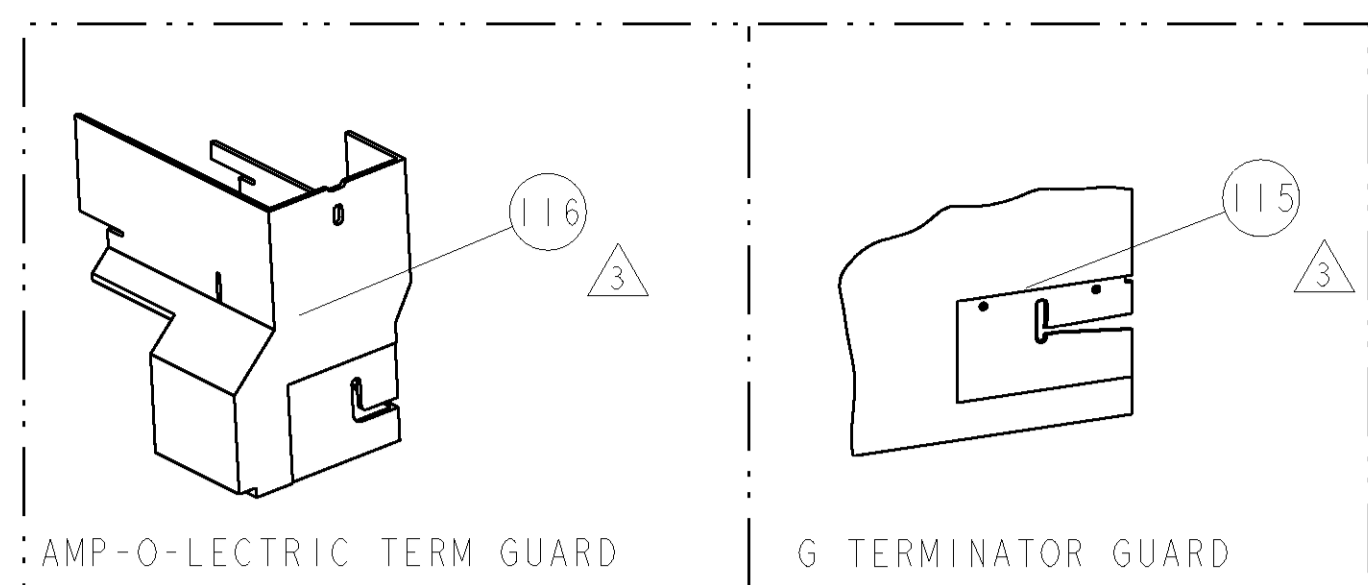


PART NUMBER	REV	FIRST USED	POWER UNIT	FEED TYPE	DESCRIPTION
1855271-1	B	122500-1	LEADMAKER	POST FEED	CUTS CARRIER
1855271-2	B	565435-5	BENCH MODEL K	PRE FEED	CUTS CARRIER
1855271-3	B	354500-1	BENCH MODEL G	PRE FEED	CUTS CARRIER
1855271-6	B	122500-1	LEADMAKER	POST FEED	CONTINUOUS CARRIER
7-1855271-7	A	-	-	-	SPARE PARTS

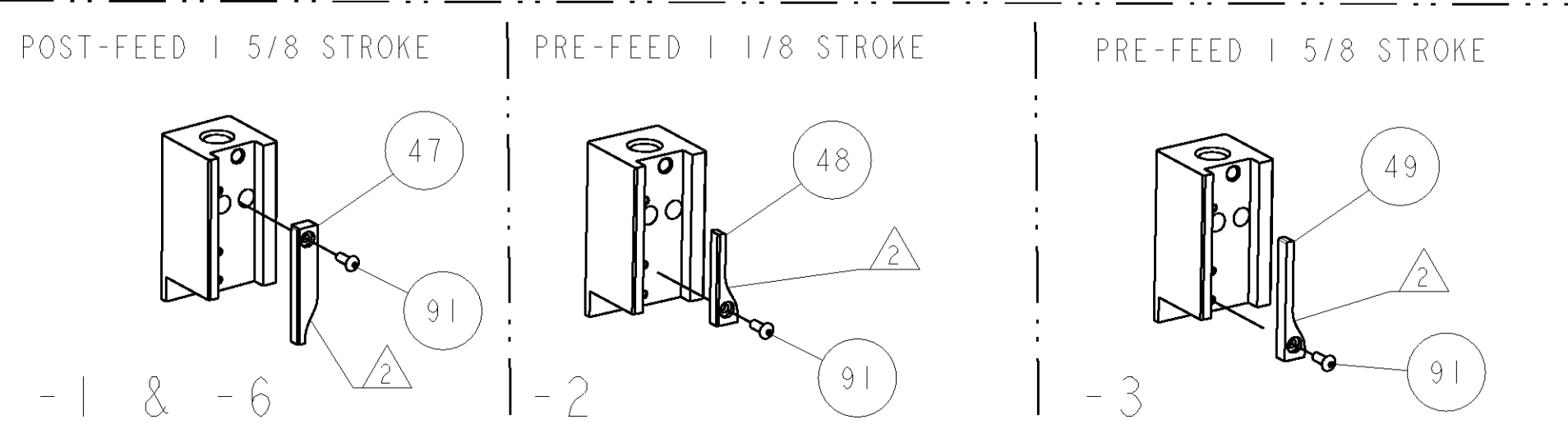
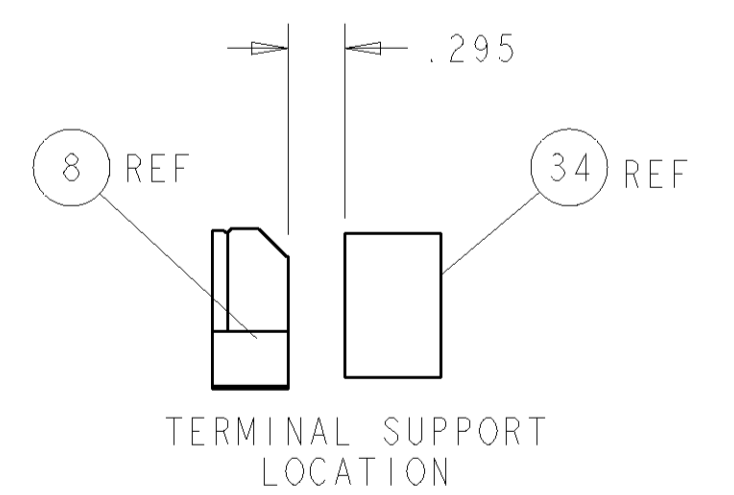
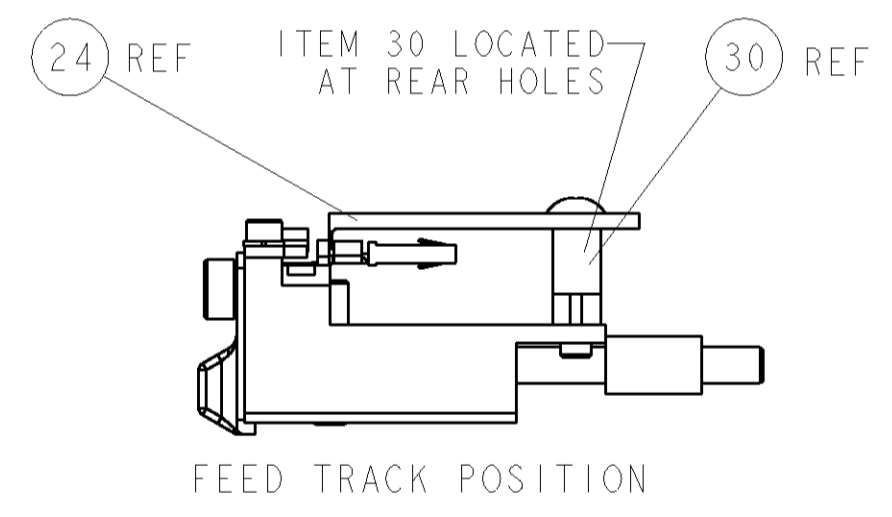
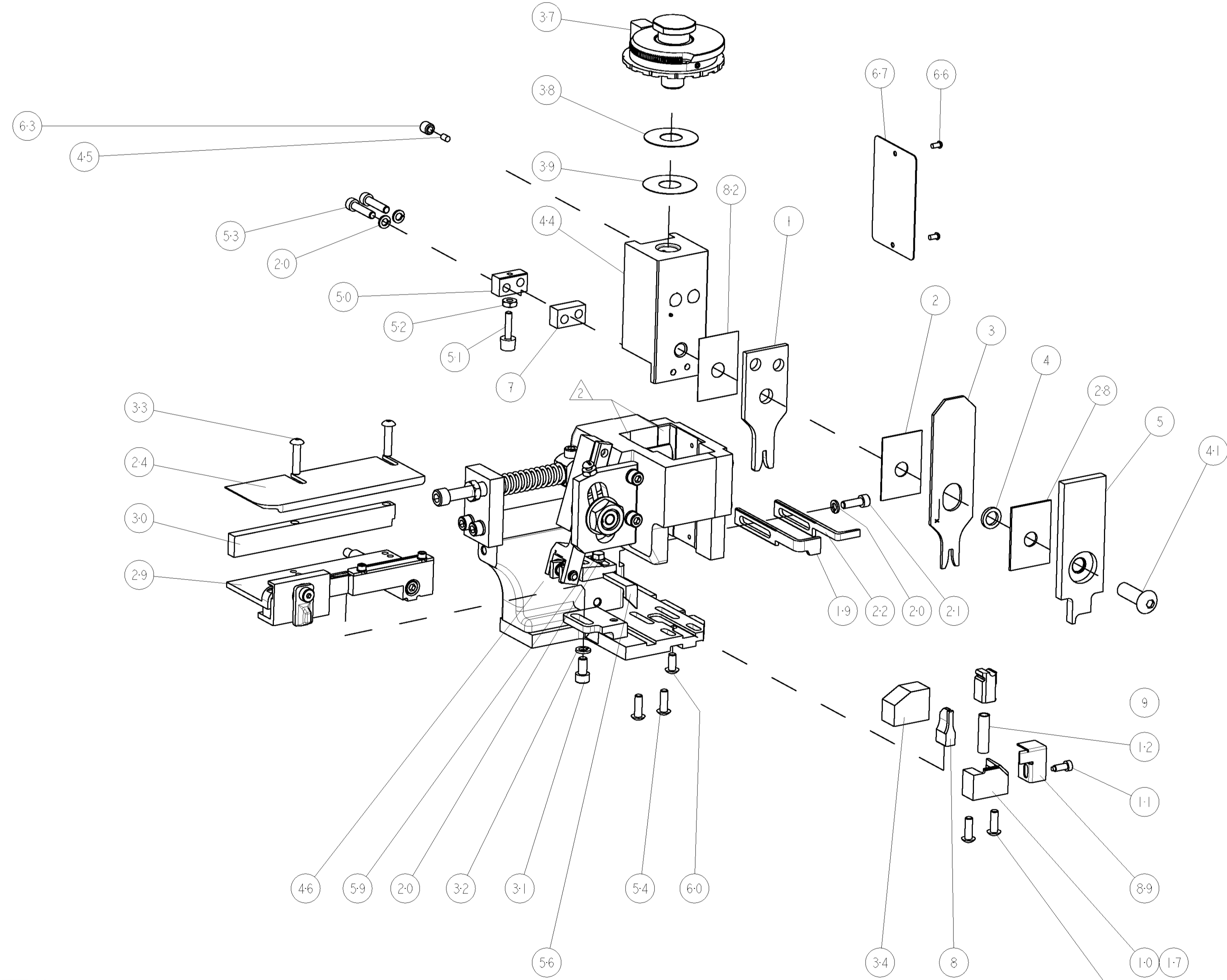


TERMINAL NAME: MULTIWAY, SNAP TOGETHER, CONTACT				
TE PN	ITT CANNON PN	ITT CANNON TERMINAL - AMP CRIMP SPECS		
1949366-1	192900-0001			
1949366-2	192900-0003	CRIMP HEIGHT	WIRE SIZE	REF SETTING
1949559	192900-0408	.056±.002 [1.42±0.05mm]	16AWG	C2
-	-	.049±.002 [1.24±0.05mm]	18AWG	D5
-	-	.044±.002 [1.12±0.05mm]	20AWG	E4
-	-	-	-	-
-	-	CRIMP	SIZE	TYPE
-	-	WIRE	.082 [2.08mm]	F
-	-	INSUL	.110 [2.79mm]	F
-	-	FEED	Ø.078-.118	
WIRE STRIP LENGTH	TERM APPL SPEC	FEED	APPLICATOR INSTRUCTIONS	SET UP GAGE
.146-.164	NONE	.350	408-8040	458637-1

LOC	DIST	REVISIONS					
A	66	F	LTR	DESCRIPTION	DATE	DRN	APPR
		A		RELEASED	15MAY2007	LG	TE
		A1		ECR-09-00193J	27JAN2009	MY	GB
		B		ECR-09-005847	12MAR2009	MY	TE

- △ RECOMMENDED SPARE PARTS
- △ GREASE LIGHTLY
- △ GUARD MUST BE IN PLACE WHEN OPERATING APPLICATOR IN A BENCH MACHINE

**\* WARNING**  
ON INSTALLATION, SET WIRE DISC TO LARGEST WIRE SIZE SETTING. USE OF SETTINGS BELOW MIN. REQUIRED CRIMP HEIGHT SETTING WILL CAUSE DAMAGE TO CRIMP TOOLING.



QTY	REF	DESCRIPTION	ITEM NO
1	REF	GUARD WINDOW	116
1	REF	INSERT, GUARD	115
1		SCR, BTN SKT HD CAP 6-32 X .375	91
1		GUARD, FRONT CHIP	89
1		SPACER, CRIMPER	82
1		SF APPL INST 408-8040	72
1		GENERAL INSTRUCTION PKG	71
1		PLATE, IDENTIFICATION	67
2	2 2 2 2	SCR, DRIVE	66
1		SCR, SET, SELF LOCKING 1/4-20 X .250	63
1		SCR, BHSC, SELF-LOCKING, 8-32 X .375	60
1		SCR, HEX HD CAP 8-32 X .312	59
1		PAWL, FEED	56
4	4 4 4 4	SCR, BTN SKT HD CAP 8-32 X .500	54
2	2 2 2 2	SCR, SKT HD CAP 8-32 X .750	53
1		NUT, HEX, REG 6-32	52
1		BUMPER, HOLD DOWN	51
1		SPACER, TONKER	50
-	-	CAM, PRE FEED, 1 5/8	49
-	-	CAM, PRE FEED, 1 1/8	48
-	-	CAM, POST-FEED 1 5/8	47
1		APPL. BASIC SUB ASSY (SIDE WISE MOCA)	46
1		PLUG, NYLON	45
1		RAM, SIDE FEED	44
1		SCR, BTN SKT HD CAP 5/16-24 X 1.00	41
1		SHIM SUB-ASSY	39
1		SHIM	38
1		FINE ADJUST HEAD ASSEMBLY	37
1		TERMINAL SUPPORT	34
2	2 2 2 2	SCR, BTN SKT HD CAP 8-32 X .750	33
1		WASHER, SPRG LOCK, REG NO 10	32
1		SCR, SKT HD CAP 10-32 X .375	31
1		SPACER, STRIP GUIDE	30
1		ASSEMBLY, STRIP GUIDE	29
1		SPACER, CRIMPER	28
1		PLATE, STRIP GUIDE	24
1		STRIPPER	22
1		SCR, SKT HD CAP 8-32 X .500	21
4	4 4 4 4	WASHER, SPRG LOCK, REG NO 8	20
-	-	STRIPPER	19
1		SHEAR HOLDER, FRONT (NO CUT)	17
1		SPRING, COMPRESSION	12
1		STOP, SHEAR	11
1		SHEAR HOLDER, FRONT	10
1		FLOATING SHEAR, FRONT	9
1		ANVIL, COMBINATION	8
1		SPACER	7
1		DEPRESSOR, SHEAR	5
1		BLOCK, CRIMPER SPACER	4
1		CRIMPER, INSULATION PREMIUM	3
1		SPACER, CRIMPER	2
1		CRIMPER, WIRE PREMIUM	1

QTY	REF	DESCRIPTION	ITEM NO
-77	-6 -3 -2 -1	U/M PART NO	
DIMENSIONS:		TOLERANCES UNLESS OTHERWISE SPECIFIED:	
INCHES		0 PLC ±.01	
		1 PLC ±.01	
		2 PLC ±.01	
		3 PLC ±.001	
		4 PLC ±.0001	
ANGLES		±.0001	
MATERIAL		FINISH	
WEIGHT		APPROVALS:	
CUSTOMER DRAWING		SCALE 3:5 SHEET 1 OF 1 REV B	

CUSTOMER VIEWABLE ASSEMBLY