
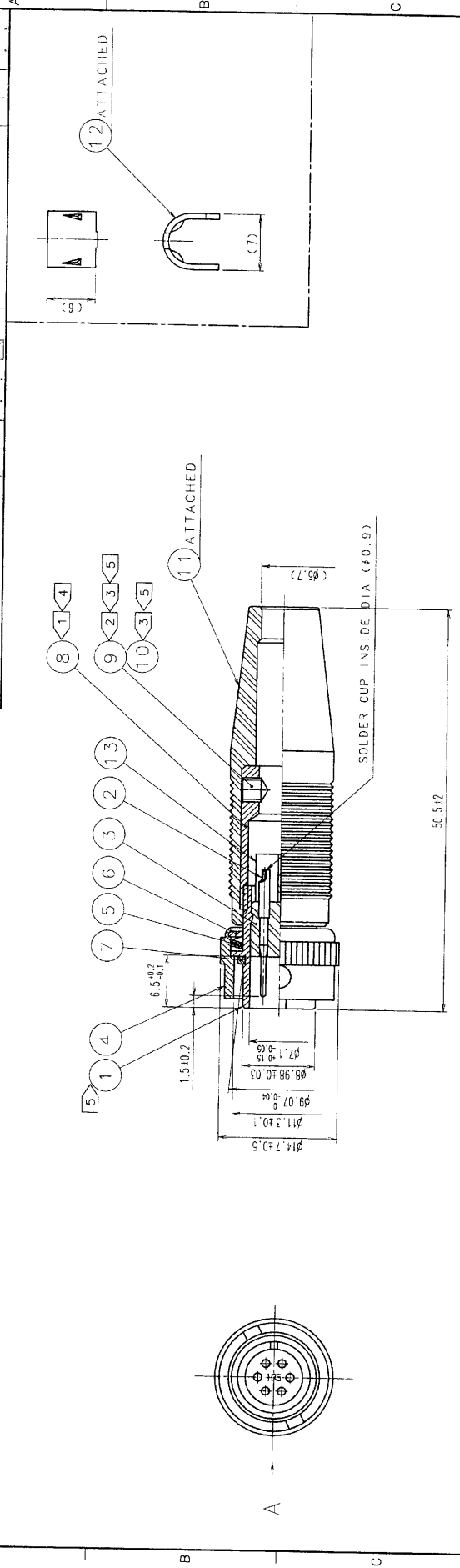


| COUNT                                                                                                                                                | DESCRIPTION OF REVISIONS    | BY                                                                                                               | CHKD | DATE                | COUNT                                                                                                                                               | DESCRIPTION OF REVISIONS | BY                          | CHKD                 | DATE                                                                                  |
|------------------------------------------------------------------------------------------------------------------------------------------------------|-----------------------------|------------------------------------------------------------------------------------------------------------------|------|---------------------|-----------------------------------------------------------------------------------------------------------------------------------------------------|--------------------------|-----------------------------|----------------------|---------------------------------------------------------------------------------------|
| △                                                                                                                                                    |                             |                                                                                                                  |      |                     | △                                                                                                                                                   |                          |                             |                      |                                                                                       |
| △                                                                                                                                                    |                             |                                                                                                                  |      |                     | △                                                                                                                                                   |                          |                             |                      |                                                                                       |
| APPLICABLE STANDARD                                                                                                                                  |                             |                                                                                                                  |      |                     |                                                                                                                                                     |                          |                             |                      |                                                                                       |
| RATING                                                                                                                                               | OPERATING TEMPERATURE RANGE | -10 °C TO +60 °C                                                                                                 |      |                     | STORAGE TEMPERATURE RANGE                                                                                                                           | -10 °C TO +60 °C         |                             |                      |                                                                                       |
|                                                                                                                                                      | VOLTAGE                     | AC 100 V, DC 140 V                                                                                               |      |                     |                                                                                                                                                     |                          |                             |                      |                                                                                       |
|                                                                                                                                                      | CURRENT                     | 1 A                                                                                                              |      |                     | APPLICABLE CABLE                                                                                                                                    |                          |                             |                      |                                                                                       |
| <b>SPECIFICATIONS</b>                                                                                                                                |                             |                                                                                                                  |      |                     |                                                                                                                                                     |                          |                             |                      |                                                                                       |
| ITEM                                                                                                                                                 |                             | TEST METHOD                                                                                                      |      |                     | REQUIREMENTS                                                                                                                                        |                          |                             | QT                   | AT                                                                                    |
| <b>CONSTRUCTION</b>                                                                                                                                  |                             |                                                                                                                  |      |                     |                                                                                                                                                     |                          |                             |                      |                                                                                       |
| GENERAL EXAMINATION                                                                                                                                  |                             | VISUALLY AND BY MEASURING INSTRUMENT.                                                                            |      |                     | ACCORDING TO DRAWING.                                                                                                                               |                          |                             | ×                    | ×                                                                                     |
| MARKING                                                                                                                                              |                             | CONFIRMED VISUALLY.                                                                                              |      |                     |                                                                                                                                                     |                          |                             | ×                    | ×                                                                                     |
| <b>ELECTRIC CHARACTERISTICS</b>                                                                                                                      |                             |                                                                                                                  |      |                     |                                                                                                                                                     |                          |                             |                      |                                                                                       |
| CONTACT RESISTANCE                                                                                                                                   |                             | CONTACT SHALL BE MEASURED AT DC 1 A                                                                              |      |                     | 10 mΩ MAX.                                                                                                                                          |                          |                             | ×                    | ×                                                                                     |
| INSULATION RESISTANCE                                                                                                                                |                             | 100 V DC.                                                                                                        |      |                     | 200 MΩ MIN.                                                                                                                                         |                          |                             | ×                    | ×                                                                                     |
| VOLTAGE PROOF                                                                                                                                        |                             | 300 V AC FOR 1 min.                                                                                              |      |                     | NO FLASHOVER OR BREAKDOWN.                                                                                                                          |                          |                             | ×                    | ×                                                                                     |
| <b>MECHANICAL CHARACTERISTICS</b>                                                                                                                    |                             |                                                                                                                  |      |                     |                                                                                                                                                     |                          |                             |                      |                                                                                       |
| CONTACT INSERTION AND WITHDRAWAL FORCES                                                                                                              |                             | — BY STEEL GAUGE.                                                                                                |      |                     | INSERTION AND WITHDRAWAL FORCES : — N.                                                                                                              |                          |                             | —                    | —                                                                                     |
| CONNECTOR INSERTION AND WITHDRAWAL FORCES                                                                                                            |                             | MEASURED BY APPLICABLE CONNECTOR.                                                                                |      |                     | INSERTION AND WITHDRAWAL FORCES<br>LOCKING DEVICE WITH UNLOCK : 50 N MAX.                                                                           |                          |                             | ×                    | —                                                                                     |
| MECHANICAL OPERATION                                                                                                                                 |                             | 1000 TIMES INSERTIONS AND EXTRACTIONS.                                                                           |      |                     | CONTACT RESISTANCE: 15 mΩ MAX.                                                                                                                      |                          |                             | ×                    | —                                                                                     |
| VIBRATION                                                                                                                                            |                             | FREQUENCY 10 TO 55 Hz, SINGLE AMPLITUDE 0.75 mm,<br>— m/s <sup>2</sup> AT 2 h, FOR 3 DIRECTIONS.                 |      |                     | ① NO ELECTRICAL DISCONTINUITY OF 10 μs.<br>② NO DAMAGE, CRACK AND LOOSENESS, OF PARTS.                                                              |                          |                             | ×                    | —                                                                                     |
| SHOCK                                                                                                                                                |                             | 490 m/s <sup>2</sup> DIRECTIONS OF PULSE 11 ms AT 3 TIMES<br>FOR 3 DIRECTIONS.                                   |      |                     | ① NO ELECTRICAL DISCONTINUITY OF 10 μs.<br>② NO DAMAGE, CRACK AND LOOSENESS, OF PARTS.                                                              |                          |                             | ×                    | —                                                                                     |
| <b>ENVIRONMENTAL CHARACTERISTICS</b>                                                                                                                 |                             |                                                                                                                  |      |                     |                                                                                                                                                     |                          |                             |                      |                                                                                       |
| DAMP HEAT (STEADY STATE)                                                                                                                             |                             | EXPOSED AT 40 °C, 90 TO 95 %, 96 h.                                                                              |      |                     | ① INSULATION RESISTANCE: 2 MΩ MIN (AT HIGH HUMIDITY).<br>② INSULATION RESISTANCE: 20 MΩ MIN (AT DRY).<br>③ NO DAMAGE, CRACK AND LOOSENESS OF PARTS. |                          |                             | ×                    | —                                                                                     |
| RAPID CHANGE OF TEMPERATURE                                                                                                                          |                             | TEMPERATURE -55 → R/T <sup>(1)</sup> → +85 → R/T °C<br>TIME 30 → 10 TO 15 → 30 → 10 TO 15 min<br>UNDER 5 CYCLES. |      |                     | ① INSULATION RESISTANCE: 200 MΩ MIN.<br>② NO DAMAGE, CRACK AND LOOSENESS OF PARTS.                                                                  |                          |                             | ×                    | —                                                                                     |
| CORROSION SALT MIST                                                                                                                                  |                             | EXPOSED IN 5 % SALT WATER SPRAY FOR 48 h.                                                                        |      |                     | NO HEAVY CORROSION.                                                                                                                                 |                          |                             | ×                    | —                                                                                     |
| DRY HEAT                                                                                                                                             |                             | EXPOSED AT + 85 °C, 96 h.                                                                                        |      |                     | NO DAMAGE, CRACK AND LOOSENESS OF PARTS.                                                                                                            |                          |                             | ×                    | —                                                                                     |
| COLD                                                                                                                                                 |                             | EXPOSED AT - 55 °C, 96 h.                                                                                        |      |                     | NO DAMAGE, CRACK AND LOOSENESS OF PARTS.                                                                                                            |                          |                             | ×                    | —                                                                                     |
| RESISTANCE TO SOLDERING HEAT                                                                                                                         |                             | SOLDER TEMPERATURE, + 350 ± 10 °C, FOR SOLDERING DURATION, 3 ~ 4 s.                                              |      |                     | NO DEFORMATION OF CASE OF EXCESSIVE LOOSENESS OF THE TERMINALS.                                                                                     |                          |                             | ×                    | —                                                                                     |
| SOLDERABILITY                                                                                                                                        |                             | SOLDERED AT SOLDER TEMPERATURE, + 350 ± 10 °C FOR SOLDERING DURATION, 2 ~ 3 s.                                   |      |                     | WETTING ON SOLDER SURFACE. NO SOLDER CLUSTER.                                                                                                       |                          |                             | ×                    | —                                                                                     |
| <b>REMARKS</b>                                                                                                                                       |                             |                                                                                                                  |      |                     | DRAWN                                                                                                                                               | DESIGNED                 | CHECKED                     | APPROVED             | RELEASED                                                                              |
| NOTE (1) R/T : ROOM TEMPERATURE<br><b>FOR REFERENCE ONLY</b><br>Subject to change without notice<br>Unless otherwise specified, refer to JIS C 5402. |                             |                                                                                                                  |      |                     | J. Komatsu<br>'06.01.07                                                                                                                             | D. Matsuno<br>'06.01.19  | E. Kimii<br>'06.01.19       | M. Sato<br>'06.01.19 |  |
| Note QT: Qualification Test AT: Assurance Test ×: Applicable Test                                                                                    |                             |                                                                                                                  |      |                     |                                                                                                                                                     |                          |                             |                      |                                                                                       |
| <b>HRS</b><br>HIROSE ELECTRIC CO., LTD.                                                                                                              |                             |                                                                                                                  |      | SPECIFICATION SHEET |                                                                                                                                                     |                          | PART NO.<br>KMC9BPD-6P (71) |                      |                                                                                       |
| CODE NO. (OLD)<br>CL                                                                                                                                 |                             | DRAWING NO.<br>ELC4-008208-71                                                                                    |      |                     | CODE NO.<br>CL110-0018-1-71                                                                                                                         |                          |                             | 1                    | 1                                                                                     |

TO  
R



| COUNT | DESCRIPTION OF REVISIONS | BY | CHKD | DATE | COUNT | DESCRIPTION OF REVISIONS | BY | CHKD | DATE |
|-------|--------------------------|----|------|------|-------|--------------------------|----|------|------|
| 1     |                          |    |      |      | 1     |                          |    |      |      |
| 2     |                          |    |      |      | 2     |                          |    |      |      |
| 3     |                          |    |      |      | 3     |                          |    |      |      |
| 4     |                          |    |      |      | 4     |                          |    |      |      |
| 5     |                          |    |      |      | 5     |                          |    |      |      |
| 6     |                          |    |      |      | 6     |                          |    |      |      |
| 7     |                          |    |      |      | 7     |                          |    |      |      |
| 8     |                          |    |      |      | 8     |                          |    |      |      |



**FOR REFERENCE ONLY**  
Subject to change without notice

| NO. | MATERIAL         | FINISH, REMARKS | NO. | MATERIAL | FINISH, REMARKS         |
|-----|------------------|-----------------|-----|----------|-------------------------|
| 7   | CR               | (BLACK)         | 13  | PTFE     |                         |
| 6   | BRASS            | NICKEL PLATING  | 12  | BRASS    |                         |
| 5   | BERYLLIUM COPPER | NICKEL PLATING  | 11  | CR       | (BLACK)                 |
| 4   | BRASS            | NICKEL PLATING  | 10  | STEEL    | NICKEL PLATING M3X0.5X2 |
| 3   | POLYACETAL       | (WHITE)         | 9   | STEEL    | NICKEL PLATING M3X0.5X3 |
| 2   | BRASS            | NICKEL PLATING  | 8   | BRASS    | NICKEL PLATING          |
| 1   | BRASS            | NICKEL PLATING  |     |          |                         |

NOTE: 1 REF. NO. 10 SHALL BE ASSEMBLED WITH REF. NOS. 9 AND NO. 10.  
 2 ACROSS FLATS OF HEXAGON HOLE OF REF. NO. 11.  
 3 THE RECOMMENDED CLAMP TORQUE OF REF. NOS. 9 AND NO. 10: 0.3 TO 0.4 N·m.  
 4 THE RECOMMENDED CLAMP TORQUE OF REF. NO. 8: 1.5 TO 2 N·m.  
 5 LOCTITE 242, LOCTITE OR EQUIVALENT IS RECOMMENDED TO PREVENT REF. NOS. 9 AND 10 FROM LOOSENING.  
 6 ROTATION EXAMPLES OF REF. NOS. 14 AND 8 ARE SHOWN.  
 7 GOLD PLATING 2µm min.  
 8 NICKEL UNDER PLATING 3µm min.

|                     |                   |                    |                |            |
|---------------------|-------------------|--------------------|----------------|------------|
| DRAWN               | DESIGNED          | CHECKED            | APPROVED       | RELEASED   |
| <i>J. Hernandez</i> | <i>D. Matrone</i> | <i>E. Parrilli</i> | <i>M. Sato</i> | <i>HRS</i> |
| 12.01.19            | 16.01.19          | 16.01.19           | 16.01.19       | 1.2016     |
| USA                 |                   |                    |                |            |

DRAWING NO. EDC3-008208-71 PART NO. KMC9BPD-6P(71)  
 CODE NO. CL110-0018-1-71  
 HRS HIROSE ELECTRIC CO., LTD.