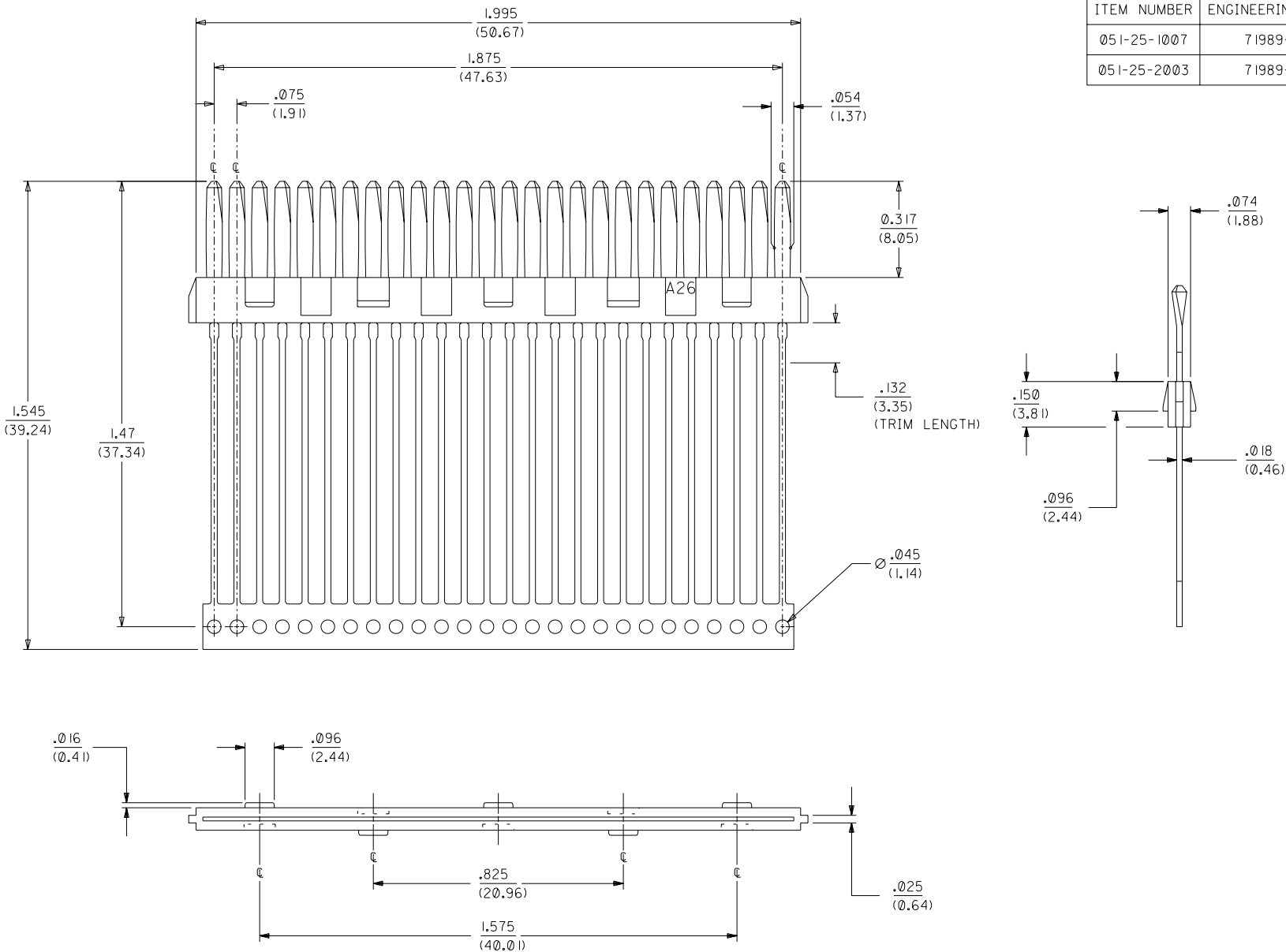


71989

ITEM NUMBER	ENGINEERING NUMBER	DESCRIPTION
051-25-1007	71989-2002	CARRIER ATTACHED
051-25-2003	71989-2003	TRIMMED TO LENGTH



NOTES:

- INSULATOR MATERIAL IS LIQUID CRYSTAL POLYMER (LCP), RATED U.L. 94 V-0, COLOR IS BLACK
- TERMINAL MATERIAL IS PHOSPHOR BRONZE.
- TERMINAL PLATING IS .000030/(0.00076) MINIMUM GOLD IN CONTACT AREA AND .000100/(0.00254) MINIMUM TIN ON SOLDER TAILS, WITH NICKEL UNDERPLATE OVERALL.
 *THE PRIMARY SHIPPING CARTON WILL BE LABELED "COMPLIANT TO RoHS DIRECTIVE 2002/95/EC AND ELV ANNEX II OF DIRECTIVE 2000/53/EC". CARTONS WITHOUT THIS LABEL MAY CONTAIN PRODUCT WITH LEAD.
- ALL DIMENSIONS ARE SHOWN FOR REFERENCE ONLY.
- THIS COMPONENT CONFORMS TO PRODUCT SPECIFICATION PS-70660.
- PACKAGE PER SPECIFICATION PK-70873-0233.

B	ADDED PK SPEC UCP2004-1858 RWHITE 04/03/23
A	INITIAL RELEASE PER UDT1999-0221 SCHMIDG 98/09/29

DIMENSIONS SHOWN (METRIC/INCH)		MFG.		SH.	REV.	LTR.	REVISIONS
UNLESS OTHERWISE SPECIFIED TOLERANCES: ANGULAR ± 1/2°		▽ = 0	▽ = 0				REVISE ONLY ON CAD SYSTEM
TITLE		.075 PITCH LFH INSERT-MOLDED TERMINAL STRIP, 26 CKT. MALE (SALES DWG.)					
3 PLACE ± --- ---		MOLEX INCORPORATED		SHEET NO.	DATE		
2 PLACE ± --- ± ---		LITSE,ILL. 60532		U.S.A.	1 OF 1 98/09/21		
1 PLACE --- ± ---		DRAFT WHERE APPLICABLE MUST REMAIN WITHIN DIMENSIONS		PART NO.		DRWG. NO.	
SEE CHART		SDA-71989-2002					
DRWG. BY SCHMIDGALL	CHK'D. BY KER	FILE NAME	S719892001		THIS DRAWING CONTAINS INFORMATION THAT IS PROPRIETARY TO MOLEX INC. AND SHOULD NOT BE USED WITHOUT WRITTEN PERMISSION.	DIV.	SIZE
APP'D. BY KER	SCALE 4: 1	DRW. NO.	60532		CPPI	C	C