

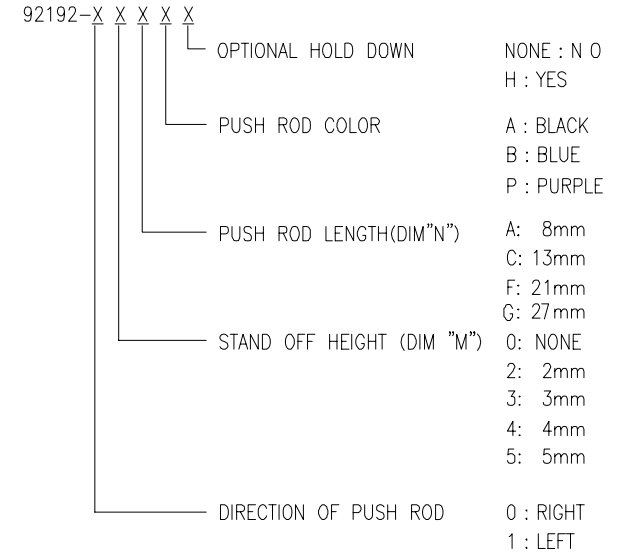


RODUCT NO.

92192

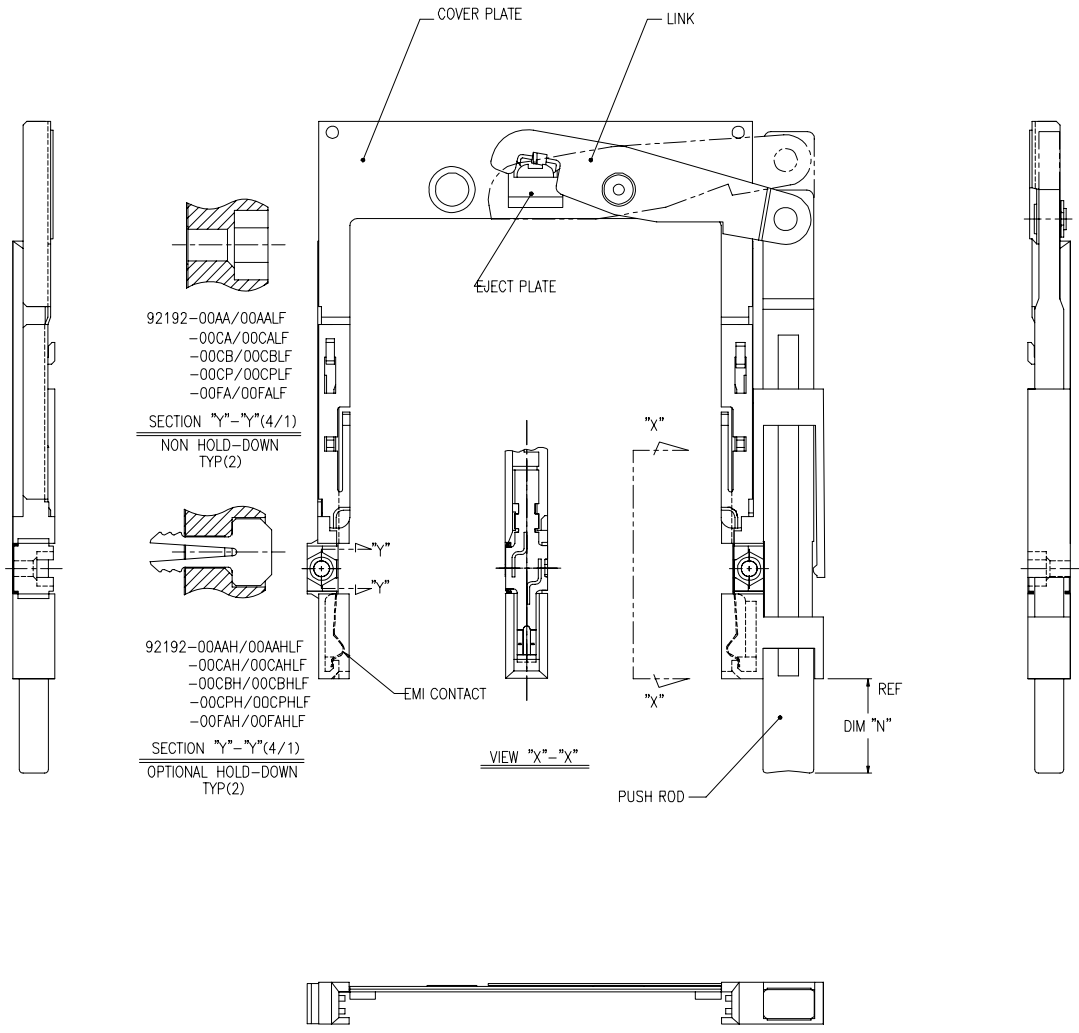
PRODUCT NO. 92192-XXXXX	STAND OFF(mm)	DIM "N" (mm)	PUSH ROD COLOR	HOLD DOWN	SHEET NO.
00AA	0	8	BLACK	NONE	NO.2
00AAH	0	8	BLACK	YES	
00CA	0	13	BLACK	NONE	
00CAH	0	13	BLACK	YES	
00CB	0	13	BLUE	NONE	
00CBH	0	13	BLUE	YES	
00CP	0	13	PURPLE	NONE	
00CPH	0	13	PURPLE	YES	
00FA	0	21	BLACK	NONE	
00FAH	0	21	BLACK	YES	
02CA	2	13	BLACK	NONE	NO.3
02CB	2	13	BLUE	NONE	
04CA	4	13	BLACK	NONE	
05CA	5	13	BLACK	NONE	
05CAH	5	13	BLACK	YES	
10AA	0	8	BLACK	NONE	NO.4
10AAH	0	8	BLACK	YES	
10CA	0	13	BLACK	NONE	
10CAH	0	13	BLACK	YES	
10CB	0	13	BLUE	NONE	
10CBH	0	13	BLUE	YES	
10CP	0	13	PURPLE	NONE	
10CPH	0	13	PURPLE	YES	
10FA	0	21	BLACK	NONE	
10FAH	0	21	BLACK	YES	
12CA	2	13	BLACK	NONE	NO.5
12CAH	2	13	BLACK	YES	
12CB	2	13	BLUE	NONE	
12FA	2	21	BLACK	NONE	
13CA	3	13	BLACK	NONE	
13CAH	3	13	BLACK	YES	
14CA	4	13	BLACK	NONE	
15CA	5	13	BLACK	NONE	

PRODUCT NO. 92192-XXXXX	STAND OFF(mm)	DIM "N" (mm)	PUSH ROD COLOR	HOLD DOWN	SHEET NO.
00AALF	0	8	BLACK	NONE	NO.2
00AAHLF	0	8	BLACK	YES	
00CALF	0	13	BLACK	NONE	
00CAHLF	0	13	BLACK	YES	
00CBLF	0	13	BLUE	NONE	
00CBHLF	0	13	BLUE	YES	
00CPLF	0	13	PURPLE	NONE	
00CPHLF	0	13	PURPLE	YES	
00FALF	0	21	BLACK	NONE	
00FAHLF	0	21	BLACK	YES	
02CALF	2	13	BLACK	NONE	NO.3
02CBLF	2	13	BLUE	NONE	
04CALF	4	13	BLACK	NONE	
05CALF	5	13	BLACK	NONE	
05CAHLF	5	13	BLACK	YES	
10AALF	0	8	BLACK	NONE	NO.4
10AAHLF	0	8	BLACK	YES	
10CALF	0	13	BLACK	NONE	
10GALF	0	27	BLACK	NONE	
10CAHLF	0	13	BLACK	YES	
10CBLF	0	13	BLUE	NONE	
10CBHLF	0	13	BLUE	YES	
10CPLF	0	13	PURPLE	NONE	
10CPHLF	0	13	PURPLE	YES	
10FALF	0	21	BLACK	NONE	
10FAHLF	0	21	BLACK	YES	NO.5
12CALF	2	13	BLACK	NONE	
12CAHLF	2	13	BLACK	YES	
12GALF	2	27	BLACK	NONE	
12CBLF	2	13	BLUE	NONE	
12FALF	2	21	BLACK	NONE	
13CALF	3	13	BLACK	NONE	
13CAHLF	3	13	BLACK	YES	
14CALF	4	13	BLACK	NONE	
15CALF	5	13	BLACK	NONE	



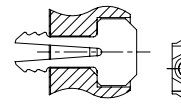
mat'l. code		surface		tolerance		projection		product family	
ltr		ecn no		date		tolerances unless otherwise specified		PCMCIA	
P	ELX-N-20919	J.H	05/27/15	angles		linear		title	
				±2'		±0.30		68P EJECTOR HEADER TYPE I/II/III MECHANISM ASS'Y	
				dr		M.KAJIURA		7/22/99	
				enr		M.KAJIURA		7/22/99	
				chr		M.KAJIURA		7/22/99	
				appd		M.KAJIURA		7/22/99	
sheet index		revision sheet						scale	
								MM	
								scale	
								dwg no	
								sheet 1 of 5	
								size	
								A4	
								type	
								CUSTOMER	
								Drawing	

ODUCT NO.
192-00AA/00AALF
192-00AAH/00AAHLF
192-00CA/00CALF
192-00CAH/00CAHLF
192-00CB/00CBLF
192-00CBH/00CBHLF
192-00CP/00CPLF
92192-00CPH/00CPHLF
92192-00FA/00FALF
92192-00FAH/00FAHLF



92192-00AA/00AALF  
 -00CA/00CALF  
 -00CB/00CBLF  
 -00CP/00CPLF  
 -00FA/00FALF

SECTION "Y"- "Y"(4/1)  
 NON HOLD-DOWN  
 TYP(2)



92192-00AAH/00AAHLF  
 -00CAH/00CAHLF  
 -00CBH/00CBHLF  
 -00CPH/00CPHLF  
 -00FAH/00FAHLF

SECTION "Y"- "Y"(4/1)  
 OPTIONAL HOLD-DOWN  
 TYP(2)

NOTE

- EJECT PLATE MOVE ALONG INSIDE WALL OF COVER PLATE SMOOTHLY AFTER ASSEMBLING WITH HDR ASSY.
- MATERIAL
  - GUIDE : POLYPHTHARAMID UL94V-0 BLACK
  - PUSH ROD : FLAME RETARDANT UL94V-0 BLACK/BLUE
  - PLATE : STAINLESS
  - EMI CONTACT : PHOSPHOR BRONZE
  - HOLD-DOWN : BRASS
- FINISH
  - EMI CONTACT UNDER PLATING : 2.0um MIN. Ni
  - CONTACT AREA : 0.5um MIN. Au
- RECOMMENDED PCB HOLE (OPTIONAL HOLD-DOWN) : 2.3±0.1

mat'l. code		surface		tolerance		projection		product family	
ltr		ecn no		dr		date		PCMCIA	
P								title	
		angles		linear		±0.30		68P EJECTOR HEADER TYPE I/II/III MECHANISM ASS'Y	
		±2'				MM			
						scale		sheet 2 of 5 size	
		dr		M.KAJIURA		7/22/99		92192 A4	
		enr		M.KAJIURA		7/22/99		type CUSTOMER Drawing	
		chr		M.KAJIURA		7/22/99			
		appd		M.KAJIURA		7/22/99			
sheet index		revision sheet							



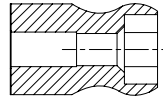
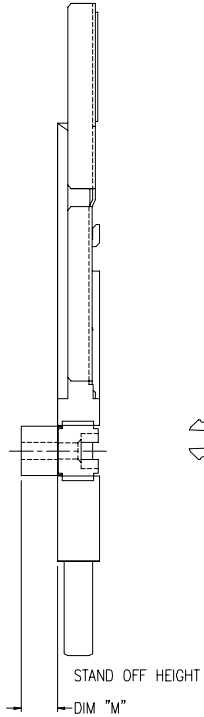
FCI CONFIDENTIAL



FCIconnect.com

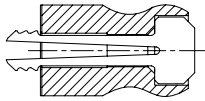
Copyright FCI

PRODUCT NO.
92192-02CA/02CALF
92192-02CB/02CBLF
92192-04CA/04CALF
92192-05CA/05CALF
92192-05CAH/05CAHLF



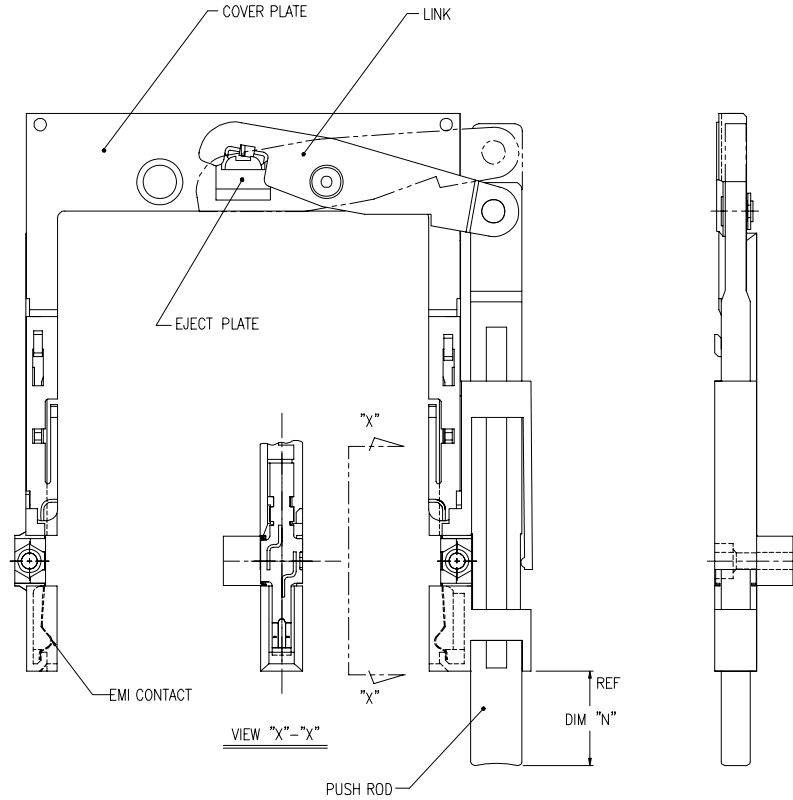
92192-02CA/02CALF  
-02CB/02CBLF  
-04CA/04CALF  
-05CA/05CALF

SECTION "Y"- "Y"(4/1)  
NON HOLD-DOWN  
TYP(2)



92192-05CAH/05CAHLF

SECTION "Y"- "Y"(4/1)  
OPTIONAL HOLD-DOWN  
TYP(2)



NOTE

1. EJECT PLATE MOVE ALONG INSIDE WALL OF COVER PLATE SMOOTHLY AFTER ASSEMBLING WITH HDR ASSY.

② MATERIAL

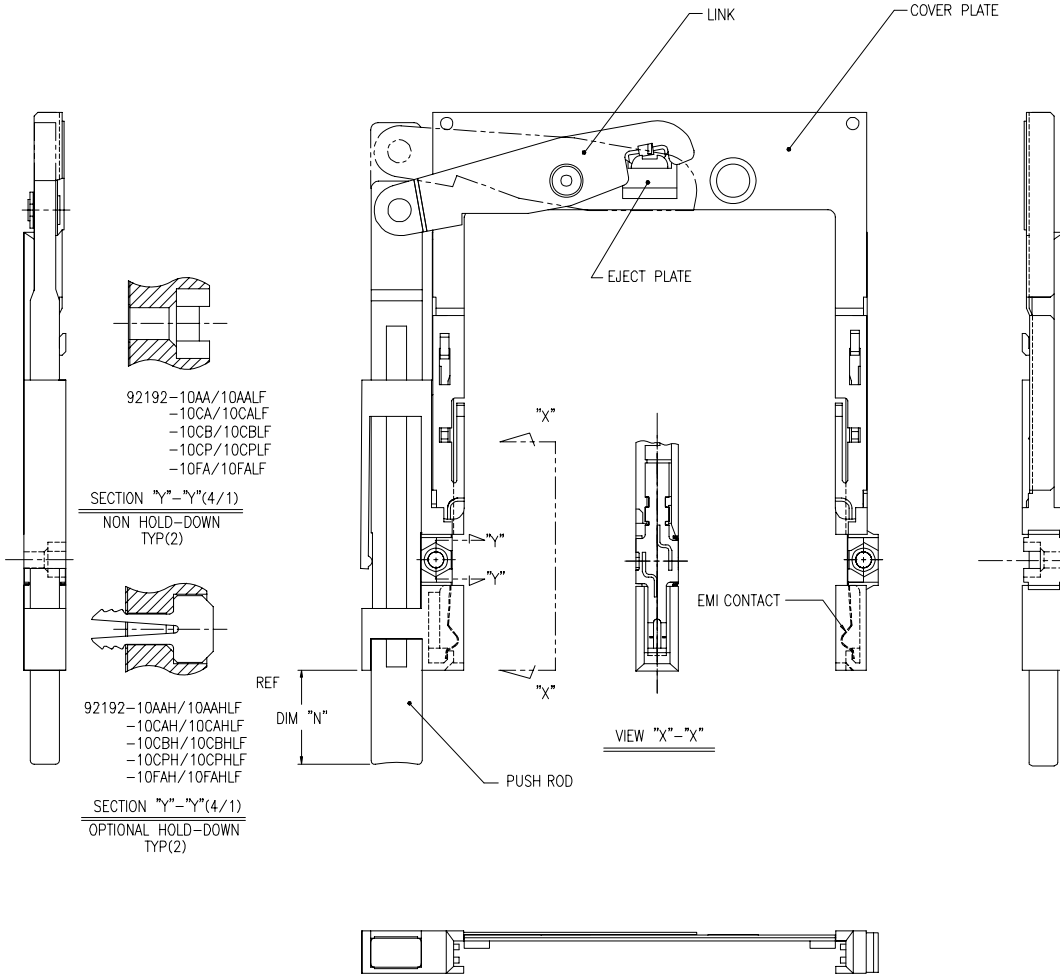
- GUIDE : POLYPHTHARAMID UL94V-0 BLACK
- PUSH ROD : FLAME RETARDANT UL94V-0 BLACK
- PLATE : STAINLESS
- EMI CONTACT : PHOSPHOR BRONZE
- STAND OFF : ZINC ALLOYS DIE CASTING

③ FINISH

- EMI CONTACT
- UNDER PLATING : 2.0µm MIN. Ni
- CONTACT AREA : 0.5µm MIN. Au
- STAND OFF : 3~5µm Ni OVER 5~10µm Cu.

mat'l. code		surface		tolerance		projection		product family	
ltr		ecn no		dr		date		PCMCIA	
P								title	
				angles		linear		68P EJECTOR HEADER TYPE I/II/III MECHANISM ASS'Y	
				±2'		±0.30		MM	
				dr		M.KAJIURA		7/22/99	
				enr		M.KAJIURA		7/22/99	
				chr		M.KAJIURA		7/22/99	
				appd		M.KAJIURA		7/22/99	
sheet		revision						scale	
index		sheet						FCI	
								dwg no	
								sheet 3 of 5	
								size	
								92192	
								A4	
								type	
								CUSTOMER	
								Drawing	

PRODUCT NO.
92192-10AA/10AALF
92192-10AAH/10AAHLF
92192-10CA/10CALF
92192-10CAH/10CAHLF
92192-10CB/10CBLF
92192-10CBH/10CBHLF
92192-10CP/10CPLF
92192-10CPH/10CPHLF
92192-10FA/10FALF
92192-10FAH/10FAHLF
92192-10GALF



- NOTE
- EJECT PLATE MOVE ALONG INSIDE WALL OF COVER PLATE SMOOTHLY AFTER ASSEMBLING WITH HDR ASSY.
  - MATERIAL
    - GUIDE : POLYPHTHARAMID UL94V-0 BLACK
    - PUSH ROD : FLAME RETARDANT UL94V-0 BLACK/BLUE
    - PLATE : STAINLESS
    - EMI CONTACT : PHOSPHOR BRONZE
    - HOLD-DOWN : BRASS
  - FINISH
    - EMI CONTACT UNDER PLATING : 2.0 $\mu$ m MIN. Ni
    - CONTACT AREA : 0.5 $\mu$ m MIN. Au
  - RECOMMENDED PCB HOLE (OPTIONAL HOLD-DOWN) : 2.3 $\pm$ 0.1

mat'l. code		surface		tolerance		projection		product family	
ltr		ecn no		dr		date		PCMCIA	
P				angles		linear		title	
				$\pm 2^\circ$		$\pm 0.30$		68P EJECTOR HEADER TYPE I/II/III MECHANISM ASS'Y	
				dr		M.KAJIURA		7/22/99	
				enr		M.KAJIURA		7/22/99	
				chr		M.KAJIURA		7/22/99	
				appd		M.KAJIURA		7/22/99	
sheet index		revision sheet						scale	
								MM	
								FCI	
								dwg no	
								92192	
								sheet 4 of 5	
								size	
								A4	
								type	
								CUSTOMER Drawing	

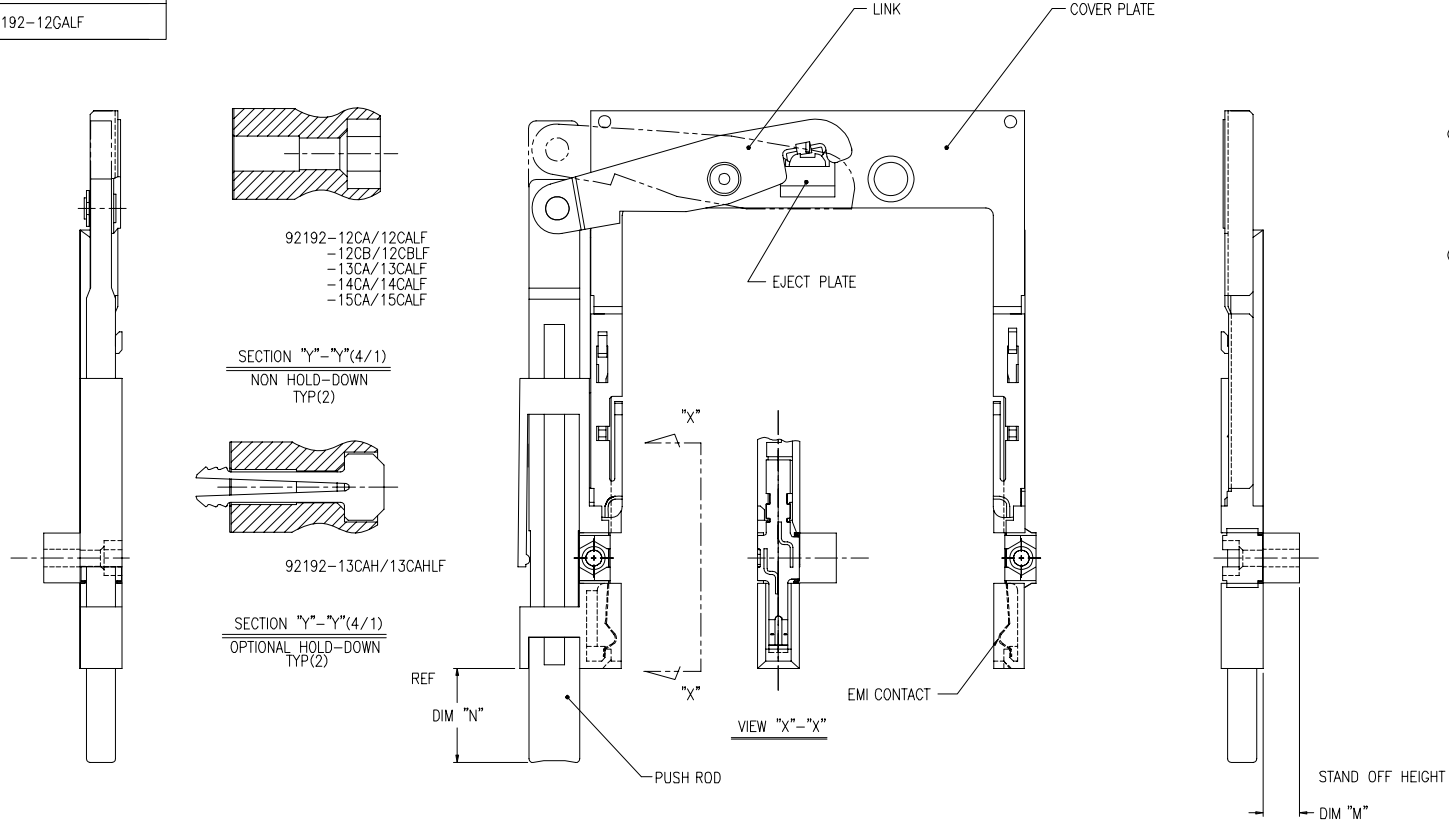
FCI CONFIDENTIAL



FCIconnect.com

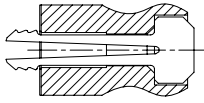
Copyright FCI

PRODUCT NO.
92192-12CAH/12CAHLF
92192-12CB/12CBLF
92192-12FA/12FALF
92192-13CA/13CALF
92192-13CAH/12CAHLF
92192-14CA/14CALF
92192-15CA/15CALF
92192-12GALF



92192-12CA/12CALF  
 -12CB/12CBLF  
 -13CA/13CALF  
 -14CA/14CALF  
 -15CA/15CALF

SECTION "Y"-Y"(4/1)  
 NON HOLD-DOWN  
 TYP(2)



92192-13CAH/13CAHLF

SECTION "Y"-Y"(4/1)  
 OPTIONAL HOLD-DOWN  
 TYP(2)

- NOTE
- EJECT PLATE MOVE ALONG INSIDE WALL OF COVER PLATE SMOOTHLY AFTER ASSEMBLING WITH HDR ASSY.
- ② MATERIAL
- GUIDE : POLYPHTHARAMID UL94V-0 BLACK
  - PUSH ROD : FLAME RETARDANT UL94V-0 BLACK
  - PLATE : STAINLESS
  - EMI CONTACT : PHOSPHOR BRONZE
  - STAND OFF : ZINC ALLOYS DIE CASTING
- ③ FINISH
- EMI CONTACT UNDER PLATING : 2.0 $\mu$ m MIN. Ni
  - CONTACT AREA : 0.5 $\mu$ m MIN. Au
  - STAND OFF : 3~5 $\mu$ m Ni OVER 5~10 $\mu$ m Cu.

mat'l. code		surface		tolerance		projection		product family	
ltr		ecn no		dr		date		PCMCIA	
P				tolerances unless otherwise specified				title	
				angles $\pm 2^\circ$		$\pm 0.30$ linear		68P EJECTOR HEADER TYPE I/II/III MECHANISM ASS'Y	
				dr		M.KAJIURA		7/22/99	
				enr		M.KAJIURA		7/22/99	
				chr		M.KAJIURA		7/22/99	
				appd		M.KAJIURA		7/22/99	
sheet index		revision sheet						scale 	
								dwg no 92192 sheet 5 of 5 size A4 type CUSTOMER Drawing	