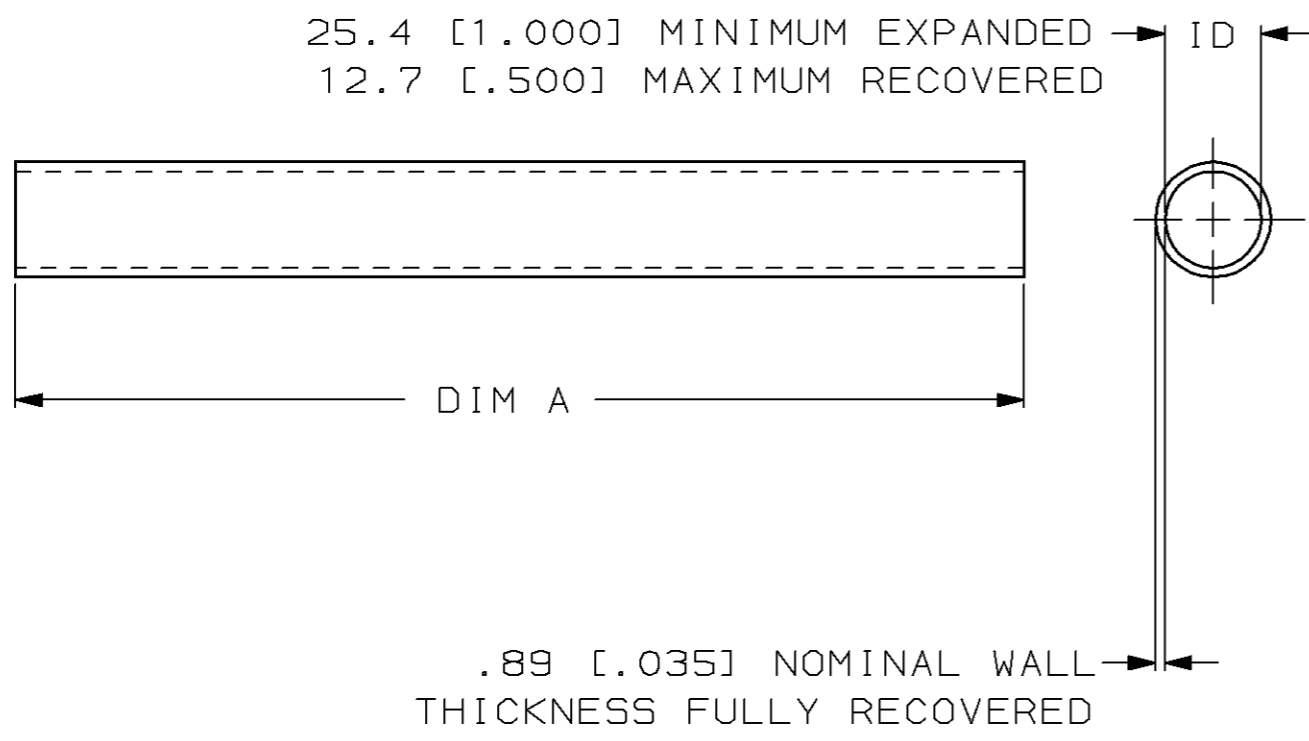


THIS DRAWING IS UNPUBLISHED. RELEASED FOR PUBLICATION, 19
 © COPYRIGHT 19 BY AMP INCORPORATED. ALL INTERNATIONAL RIGHTS RESERVED.

LOC	DIST	P	F	ZONE	LTR	REVISIONS	DATE	APPD
EY	25				F	REV; EC 0230-0240-94	7-7-94	WC DH



- TUBING MEETS REQUIREMENTS OF MIL-I-23053/5-110-0.
- △ WEIGHT PER LINEAR FOOT: 304.8 mm:
 12.47 GRAMS/ .027 POUND.

60.96 m [200 FEET] MINIMUM		1-603338-1
1.22 m [4 FEET] MINIMUM		1-603338-0
50.8 ±1.27 [2.00 ±.05]		603338-4
DIM A		PART NO
DO NOT SCALE PRINT. UNLESS SPECIFIED DIMENSIONS IN mm [INCHES] TOLERANCES ON: 2 PLC DEC ± - 3 PLC DEC ± - ANGLES ± -	DR 7-7-94 W CHANDLER	AMP Incorporated Harrisburg, PA 17105-3608
	CHK 1-25-95 D HUSSEY	
	APPD 2-1-95 D KAAT	
	APPD 2-1-95 F HARNED	
MATERIAL BLACK POLYOLEFIN	PRODUCT SPEC -	NAME AMPSULATION FP21 1.00 INCH ID, BLACK
FINISH -	APPLICATION SPEC -	SIZE B CAGE CODE 00779 DRAWING NO C-603338
	WEIGHT △	SCALE NONE SHEET 1 OF 1

THIS DRAWING IS A CONTROLLED DOCUMENT FOR AMP INCORPORATED. IT IS SUBJECT TO CHANGE AND THE CONTROLLING ENGINEERING ORGANIZATION SHOULD BE CONTACTED FOR THE LATEST REVISION.