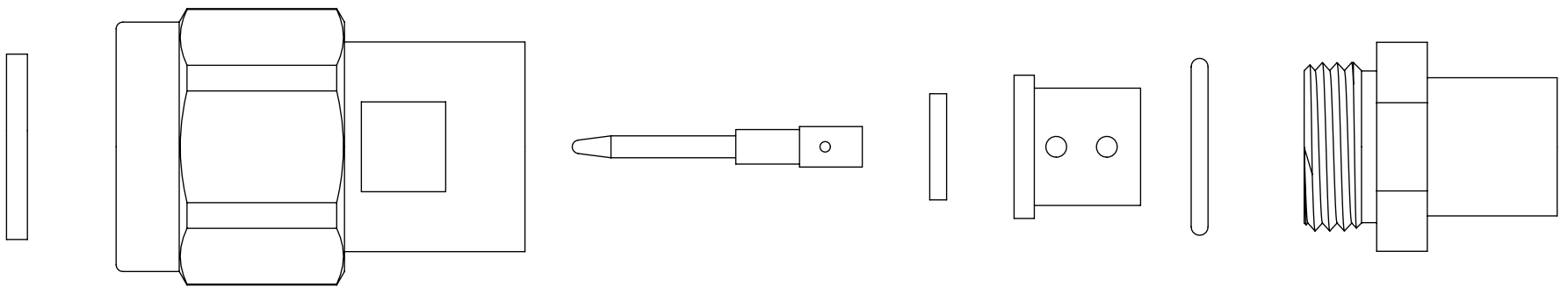
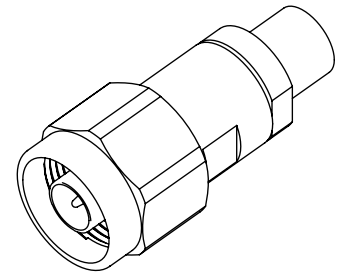
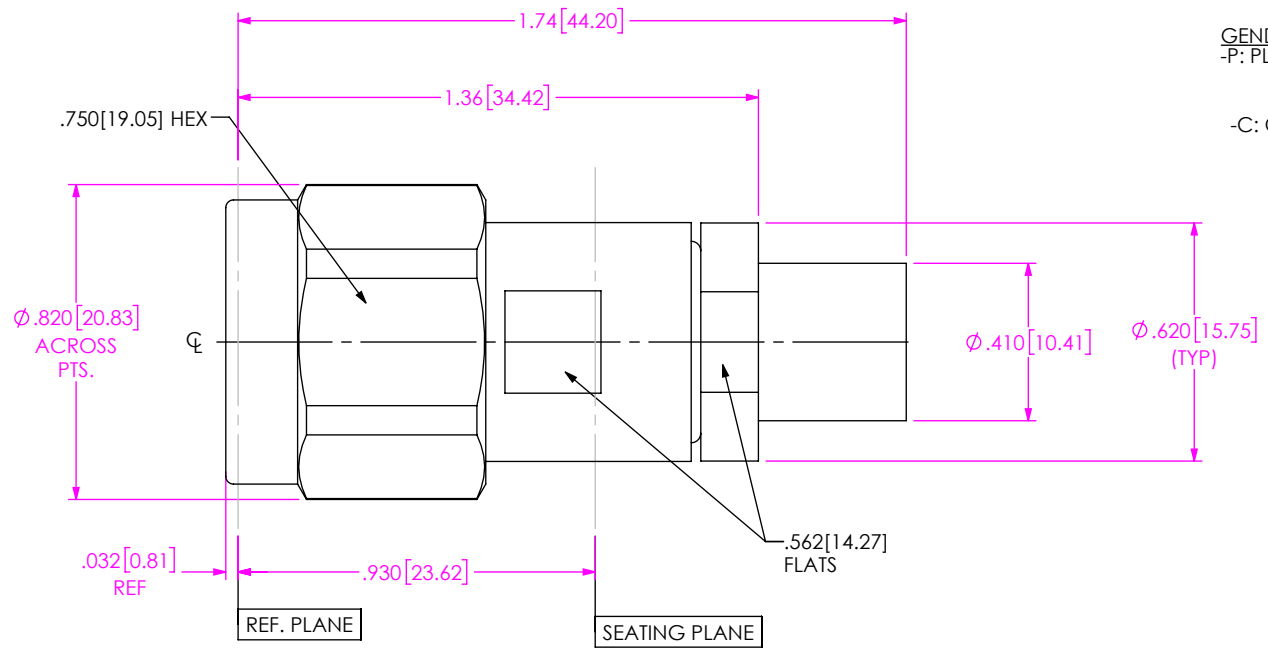


DO NOT SCALE FROM THIS PRINT

DESIGNED & DIMENSIONED IN INCHES[MILLIMETERS]

PRF06-P-C-EP-290-SS-1

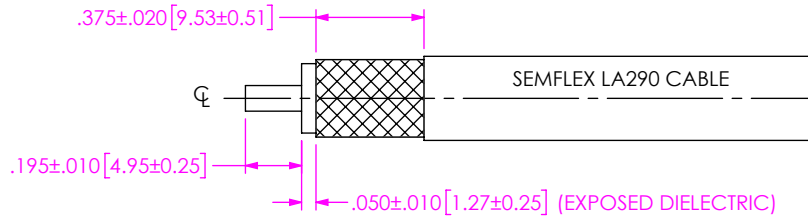
SERIES -06: NTPE
 GENDER -P: PLUG
 TYPE -C: CABLE
 FINISH -EP: 50µ" EXTRA HEAVY GOLD CENTER CONTACT, PASSIVATED OUTER CONTACT
 OPTION -1
 TERMINATION -S: SOLDER CLAMP
 ORIENTATION -S: STRAIGHT
 CABLE TYPE -290: SEMFLEX LA290



EXPLODED VIEW
 NOT TO SCALE
 (FOR CLARITY ONLY)

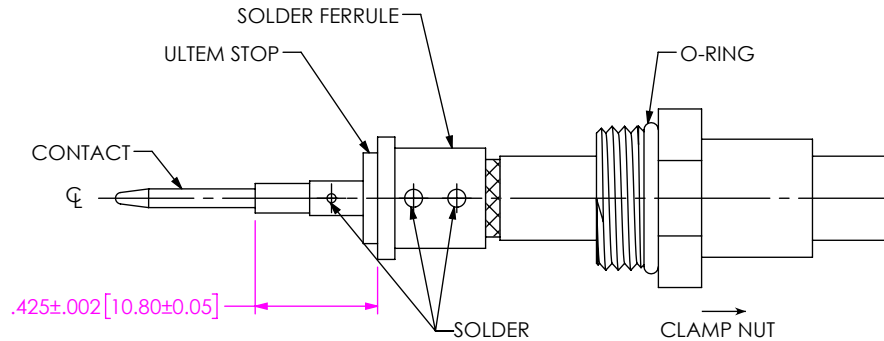
- NOTES:
- MATERIAL:
 BODY, COUPLING NUT & CLAMP NUT: STAINLESS STEEL.
 PIN & LOCK RING: BERYLLIUM COPPER.
 SOLDER FERRULE: BRASS.
 GASKET & O-RING: SILICONE RUBBER.
 INSULATOR: PTFE.
 BEAD: ULTEM 1000.
 - FINISH:
 BODY, COUPLING NUT & CLAMP NUT: PASSIVATED.
 PIN & SOLDER FERRULE: GOLD OVER NICKEL PLATE,
 50 µIN MIN GOLD OVER 50 µIN MIN NICKEL.
 - PCI P/N: 3388.

UNLESS OTHERWISE SPECIFIED, DIMENSIONS ARE IN INCHES. TOLERANCES ARE: DECIMALS ANGLES .XX: ±.01 [0.3] 1° .XXX: ±.005 [0.13] .XXXX: ±.0005 [0.013]	* PROPRIETARY NOTE * THIS DOCUMENT CONTAINS CONFIDENTIAL AND PROPRIETARY INFORMATION AND ALL DESIGN, MANUFACTURING, REPRODUCTION, USE, PATENT RIGHTS AND SALES RIGHTS ARE EXPRESSLY RESERVED BY SAMTEC, INC. THIS DOCUMENT SHALL NOT BE DISCLOSED, IN WHOLE OR PART, TO ANY UNAUTHORIZED PERSON OR ENTITY NOR REPRODUCED, TRANSFERRED OR INCORPORATED IN ANY OTHER PROJECT IN ANY MANNER WITHOUT THE EXPRESS WRITTEN CONSENT OF SAMTEC, INC.	
		520 PARK EAST BLVD, NEW ALBANY, IN 47150 PHONE: 812-944-6733 FAX: 812-948-5047 e-Mail: info@SAMTEC.com code 55322
DO NOT SCALE DRAWING	SHEET SCALE: 3:2	DESCRIPTION: N PLUG (18 GHZ), SOLDER CLAMP FOR SEMFLEX LA290 CABLE
		DWG. NO. PRF06-P-C-EP-290-SS-1
BY: WILLY Y	5/10/2022	SHEET 1 OF 2



1. TRIM CABLE AS SHOWN.

IN-PROCESS 1

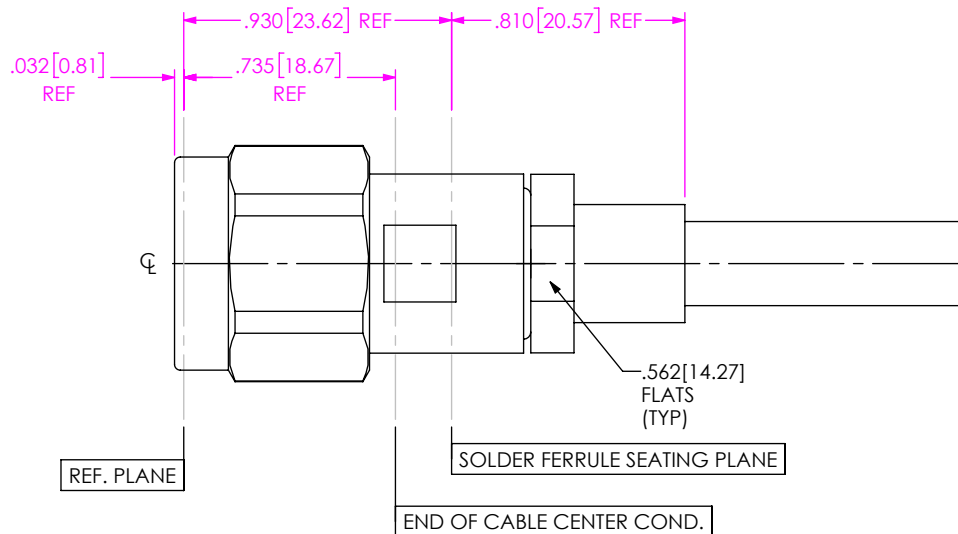


2A. SLIDE CLAMP NUT OVER CABLE AS SHOWN.

2B. INSERT CABLE INTO SOLDER FERRULE UNTIL CABLE DIELECTRIC IS FLUSH WITH FACE OF FERRULE. THEN SOLDER BOTH CABLE BRAIDS WHERE SHOWN.

2C. SLIDE DIELECTRIC STOP OVER CABLE CENTER CONDUCTOR AND SOLDER CONTACT FLUSH AGAINST STOP TO DIMENSION SHOWN.

IN-PROCESS 2



3. INSERT CABLE/CONTACT SUB-ASSEMBLY INTO CONNECTOR UNTIL SEATED AND TIGHTEN CLAMP NUT TO 35-45 IN-LBS.

IN-PROCESS 3

<p>DO NOT SCALE DRAWING</p> <p>SHEET SCALE: 3:2</p>	<p>PROPRIETARY NOTE</p> <p>THIS DOCUMENT CONTAINS CONFIDENTIAL AND PROPRIETARY INFORMATION AND ALL DESIGN, MANUFACTURING, REPRODUCTION, USE, PATENT RIGHTS AND SALES RIGHTS ARE EXPRESSLY RESERVED BY SAMTEC, INC. THIS DOCUMENT SHALL NOT BE DISCLOSED, IN WHOLE OR PART, TO ANY UNAUTHORIZED PERSON OR ENTITY NOR REPRODUCED, TRANSFERRED OR INCORPORATED IN ANY OTHER PROJECT IN ANY MANNER WITHOUT THE EXPRESS WRITTEN CONSENT OF SAMTEC, INC.</p>	
	<p>samtec</p> <p>520 PARK EAST BLVD, NEW ALBANY, IN 47150 PHONE: 812-944-6733 FAX: 812-948-5047 e-Mail: info@SAMTEC.com code 55322</p>	
	<p>DESCRIPTION: N PLUG (18 GHZ), SOLDER CLAMP FOR SEMFLEX LA290 CABLE</p>	<p>DWG. NO. PRF06-P-C-EP-290-SS-1</p>
<p>BY: WILLY Y</p>	<p>5/10/2022</p>	<p>SHEET 2 OF 2</p>