

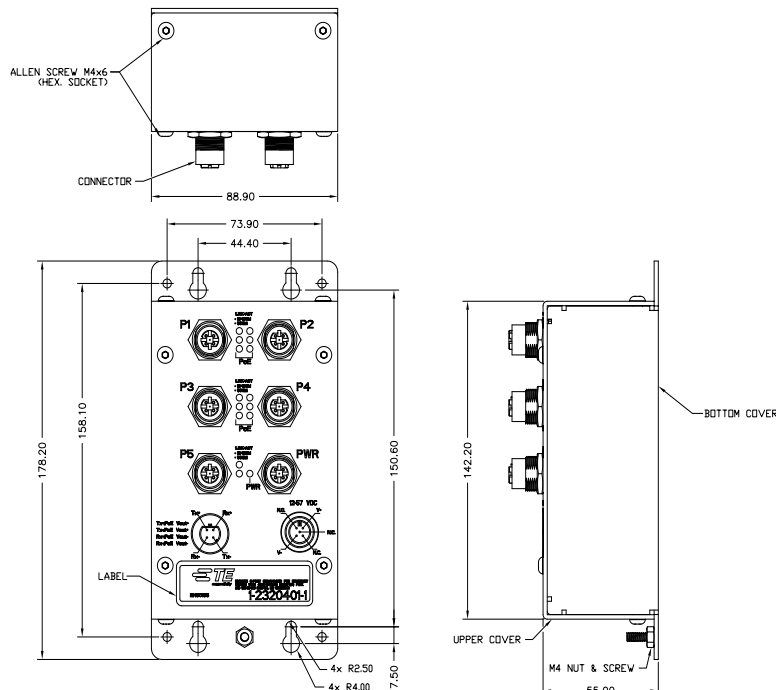


5-PORT EN50155 POE ETHERNET SWITCH

500MBPS UNMANAGED ETHERNET SWITCH WITH 4 POE PORTS

The 5-port EN50155 PoE Ethernet switches are designed for industrial applications, such as rolling stock, vehicle, and railway applications. The products are EN50155 compliant, unmanaged PoE Ethernet switches with four 10/100/500Base-T(X) P.S.E. ports and one 10/100/500Base-T(X) port. The 5-port PoE Ethernet switches use M12 connectors to guarantee reliable operation during tough environmental conditions, such as vibration and shock. Furthermore they are provided with reversed polarity protection, overcurrent protection and broadcast storm protection. The 5-port PoE switch also supports Power over Ethernet, a system to transmit electrical power, along with data, to remote devices over standard twisted-pair cable in an Ethernet network.

Technical Drawing



5-PORT EN50155 PoE ETHERNET SWITCH

500MBPS UNMANAGED ETHERNET SWITCH WITH 4 PoE PORTS

5-PORT EN50155 PoE ETHERNET SWITCH

Part Number		
	1-2320401-1	1-2320401-3
Physical ports		
10/100/500Base-T(X) with P.S.E. Ports in M12 Auto MDI/MDIX	4 x M12 connector (4-pin M12 D-coding)	
10/100/500Base-T(X) Port in M12 Auto MDI/MDIX	1 x M12 connector (4-pin M12 D-coding)	
Technology		
Ethernet Standards	IEEE 802.3 for 10Base-T IEEE 802.3u for 100Base-TX IEEE 802.3x for Flow control IEEE 802.3at PoE specification (up to 30 Watts per port for P.S.E.)	
Processing	Store-and-Forward	
LED Indicators		
Power indicator	Green : Power LED x 1	
10/100/500Base-T(X) M12 port with P.S.E. indicator	Top Green for port Link/Act at 10/100Mbps Middle Green for port Link/Act at 500Mbps Bottom Blue for PoE indicator	
10/100/500Base-T(X) M12 port indicator	Top Green for port Link/Act at 10/100Mbps Bottom Green for port Link/Act at 500Mbps	
Power		
Input Power	12-57VDC power input on M12 connector (5-pin M12 A-coding)	72-110VDC power input on M12 connector (5-pin M12 A-coding)
Power Consumption (Typ.)	2 Watts	5 Watts
PoE Output Power	60 Watts (12-24VDC) / 120 Watts (24-57VDC)	60 Watts
Overload Current Protection	Present	
Reverse Polarity Protection	Present	
Physical Data		
Ingress Protection	IP-40	
Dimensions (W x D x H)	88.9 x 55 x 178.2 mm	
Weight	643g	771g
Environmental		
Storage Temperature	-40 to 85°C (-40 to 185°F)	
Operating Temperature	-40 to 75°C (-40 to 167°F)	
Operating Humidity	5% to 95% Non-condensing	
Cable Data		
EMI	FCC Part 15, CISPR (EN55022) class A, EN50155 (EN50121-3-2, EN55011, EN50121-4)	
EMS	EN61000-4-2 (ESD), EN61000-4-3 (RS), EN61000-4-4 (EFT), EN61000-4-5 (Surge), EN61000-4-6 (CS), EN61000-4-8, EN61000-4-11	
Shock & Vibration	IEC60068-2-27/2-6, IEC60068-2-32, EN61373	
Safety	EN60950-1	