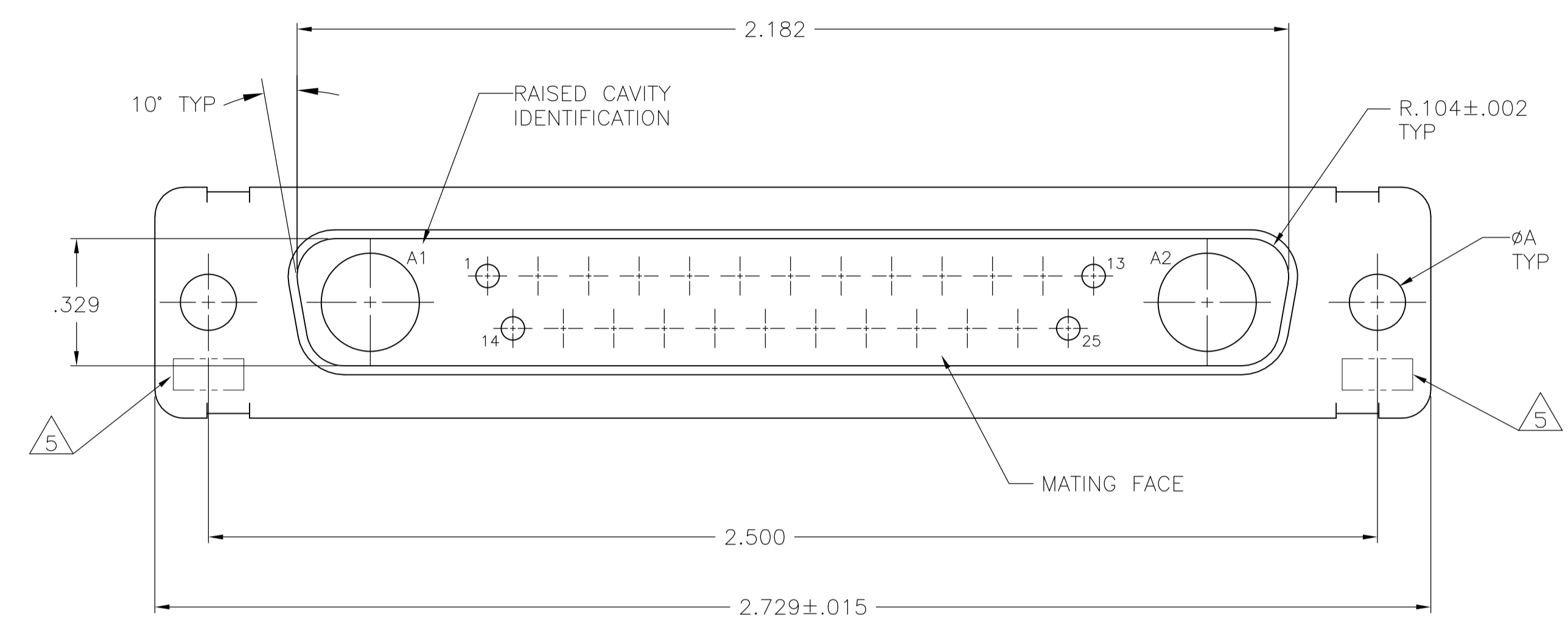
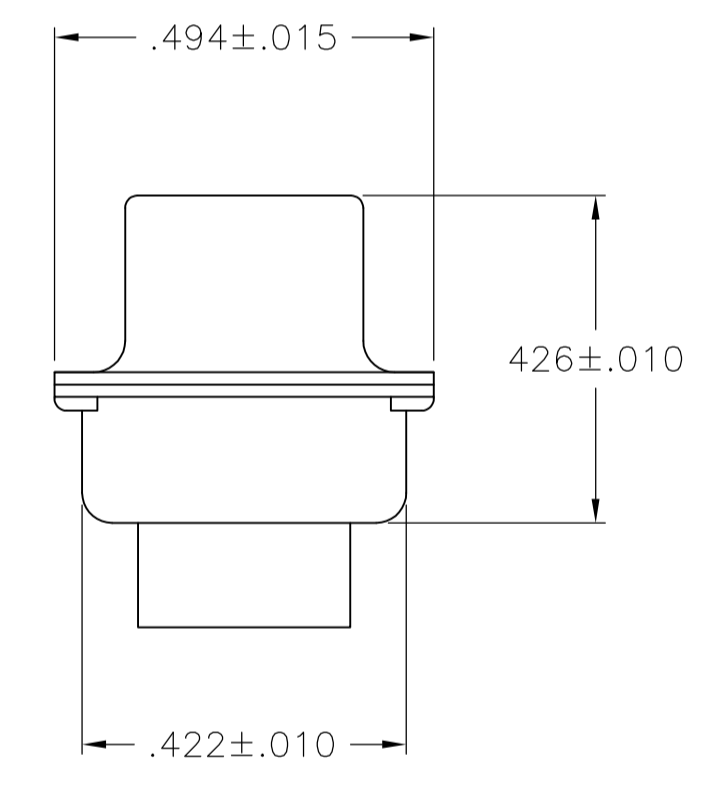
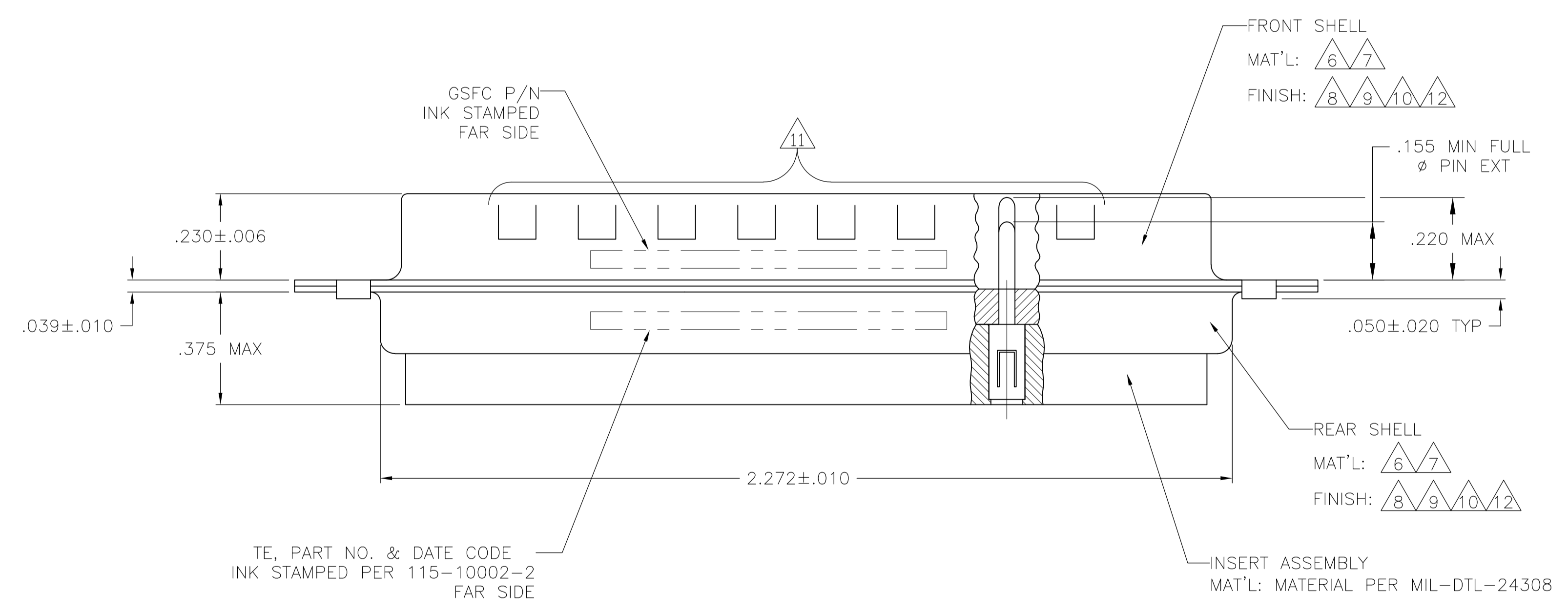


REVISONS		DATE	DN	APVD
LOC	DIST	DESCRIPTION		
N	REVISED PER	ECO-15-016251	13NOV15	KG CD

1. THIS PLUG WILL MATE WITH ANY 27C2, SIZE 4 RECEPTACLE IN AMPLIMITE SERIES.
2. MAXIMUM WIRE INSULATION TO BE USED WITH THIS PLUG IS  $\phi.068$ .
3. THIS CONNECTOR ACCEPTS (2) POWER 8, OR COAX PIN CONTACTS IN POSITIONS A1 THRU A2, PURCHASED SEPARATELY.
4. THIS CONNECTOR ACCEPTS SIZE 20 PIN SIGNAL CONTACTS IN POSITIONS 1 THRU 25, PURCHASED SEPARATELY.



- 5 UL/CSA DESIGNATION STAMPED IN THIS AREA, OPTIONAL.
- 6 STEEL PER ASTM-A-109.
- 7 BRASS PER MIL-C-50 AND ASTM-B-36 UNS NO. C26000.
- 8 CADMIUM PLATED PER QQ-P-416.
- 9 FINISH: GOLD PLATED PER MIL-G-45204 TYPE II, GRADE C, CLASS 1 OVER COPPER PER MIL-C-14550, CLASS IV.
- 10 FINISH: TIN PER ASTM-B-545, .000400 MIN THK OVER COPPER PER AMS2418 .000050 MIN THK.
- 11 GROUNDING INDENTS FOR 212538-4 & 5-212538-4 ONLY.
- 12 FINISH: ZINC PLATE PER ASTM-B-633 .000200-.000400 THK WITH SUPPLEMENTARY CHROMATE (Cr3+).



REMARKS	$\phi A$	GSFC P/N	PART NO.
$\triangle 6 \triangle 11 \triangle 10$	.120	-	5-212538-4
$\triangle 6 \triangle 12$	.120	-	5-212538-1
$\triangle 6 \triangle 10 \triangle 11$	.120	-	212538-4
$\triangle 7 \triangle 9$	.154	311P405-21P-B-15	212538-3
$\triangle 7 \triangle 9$	.120	311P405-21P-B-12	212538-2
$\triangle 6 \triangle 8$	.120	-	212538-1

THIS DRAWING IS A CONTROLLED DOCUMENT.

MANUNATH G. M. 27-May-15  
 CHARLES THOMAS 27-May-15  
 CHARLES THOMAS 27-May-15

TE Connectivity

PLUG ASSEMBLY  
 AMPLIMITE 27C2  
 SIZE 4, SERIES 109, COAX MIX

0 PLC ± -  
 1 PLC ± -  
 2 PLC ± -  
 3 PLC ± .005(0.13)  
 4 PLC ± ± 0'.30'

MATERIAL - FINISH -

APPROVALS: MANUNATH G. M., CHARLES THOMAS, CHARLES THOMAS

APPLICATION SPEC

SIZE: A1 CAGE CODE: 00779 DRAWING NO: 212538

WEIGHT: -

CUSTOMER DRAWING SCALE: 4:1 SHEET: 1 OF 1 REV: N