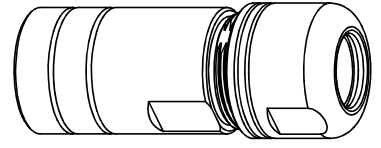
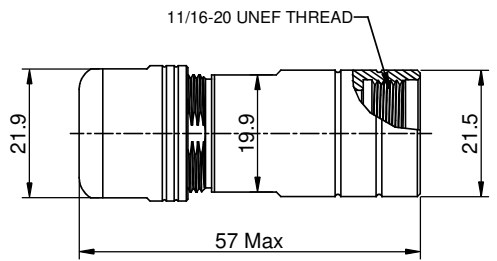
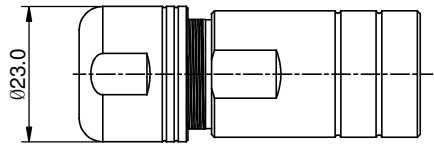
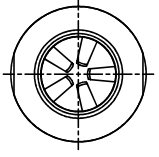


REVISIONS					
REV	ECO	DESCRIPTION	DATE	BY	APPR
B1	-	RELEASED DRAWING	JUN-20-2014	BEN	TOMMY



P/N	SHIELDING RING	CABLE RANGE
RT0L-12CG-C1	WITHOUT	Ø6-Ø10.5mm
RT0L-12CG-C2	WITHOUT	Ø8.5-Ø12.5mm
RT0L-12CG-S1	WITH	Ø6-Ø10.5mm
RT0L-12CG-S2	WITH	Ø8.5-Ø12.5mm

- NOTES : (UNLESS OTHERWISE SPECIFIED)**
- 1. MATERIAL :**
- 1.1. NUT : ZINC ALLOY, NICKEL PLATED.
  - 1.2. CLAMP INSERT : THERMOPLASTIC UL94 V-0.
  - 1.3. EMI SHIELDING RING : STAINLESS STEEL
  - 1.4. BACK SHELL : ZINC ALLOY, NICKEL PLATED.
  - 1.5. O-RING: SILICONE RUBBER.
  - 1.6. GROMMET : RUBBER.
2. ROHS COMPLIANT.
3. ALL DIMENSIONS ARE FOR REFERENCE USE ONLY.

QUANTITY	PART NUMBER	DESCRIPTION	ITEM
<b>MATERIALS LIST</b>			
<small>UNLESS OTHERWISE SPECIFIED</small> 1) All dimensions are in metric(mm). 2) Tolerances are as follows: 1 PL DEC ±0.30    Fractions: ±1/64 2 PL DEC ±0.15    Angles ±1° 3 PL DEC ±0.08 3) Note reference =		SIGNATURES    DATE DRAWN: BEN    JUN-20-2014 CHECKED: ENGINEER: APPROVAL:	<h1>Amphenol</h1> Sine Systems - www.amphenol-sine.com 44724 Morley Drive Clinton Township, MI 48036
MATERIAL SPECIFICATIONS:  PROCESS SPECIFICATIONS:  NEXT ASSY:		CUSTOMER:  THIS DRAWING IS SUPPLIED FOR INFORMATION ONLY. DESIGN FEATURES, SPECIFICATIONS AND PERFORMANCE DATA SHOWN HEREON ARE THE PROPERTY OF THE AMPHENOL CORPORATION. NO RIGHTS OF REPRODUCTION ARE IMPLIED. ALL DIMENSIONS ARE SUBJECT TO NORMAL MANUFACTURING VARIATIONS.	ECO-MATE, CORD GRIP, SIZE 12  SIZE: B    TYPE: C-    DWG NO: RT0L-12CG-xx    REVISION: B1 SCALE: NONE    SHEET 1 OF 1

TITLE: ECO-MATE, CORD GRIP, SIZE 12  
 DWG NO: RT0L-12CG-xx  
 REV: B1  
 SH: 1  
 OF: 1