

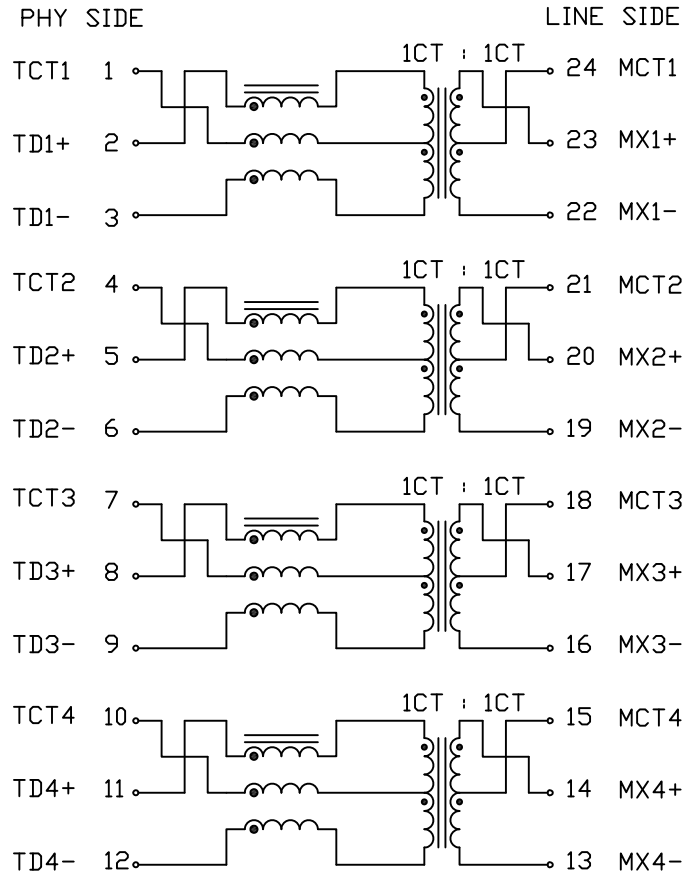
THE INFORMATION CONTAINED HEREIN IS CONSIDERED "PROPRIETARY" TO BEL FUSE INC. AND SHALL NOT BE COPIED, REPRODUCED OR DISCLOSED WITHOUT THE WRITTEN APPROVAL OF BEL FUSE INC.

PRELIMINARY

ELECTRICAL CHARACTERISTICS @25°C



SCHEMATIC



TURNS RATIO
 (2-1-3) : (23-24-22) 1CT : 1CT ±2%
 (5-4-6) : (20-21-19) 1CT : 1CT ±2%
 (8-7-9) : (17-18-16) 1CT : 1CT ±2%
 (11-10-12) : (14-15-13) 1CT : 1CT ±2%
 POLARITY PER DOT CONVENTION
 OCL 100kHz, 100mV
 180uH MIN WITH 8mA DC BIAS
 120uH MIN WITH 19mA DC BIAS
 INTERWINDING CAPACITANCE, C_{ww} @1MHz, 20mV
 30pF MAX

PARAMETER		MAGNITUDE (IN dB)	FREQUENCY (IN MHZ)	
			START	END
INSERTION LOSS	SDD12, SDD21	-0.004<fMHz>-0.4 MAX	1	150
RETURN LOSS	SDD11, SDD22	-20 MIN	1	40
		-20+15LOG<f/40MHz> MIN	40	150
ALINE NEAR END CROSSTALK	SDDXY'	-46+7LOG<f/125MHz> MIN	1	150
NEAR END CROSSTALK	SDDXY	-35 MIN	1	40
		-35+15LOG<f/40MHz> MIN	40	150
IMPEDANCE BALANCE	SDC11	-34 MIN	1	40
		-34+15LOG<f/40MHz> MIN	40	150
		SCD22	-42 MIN	1
-38+19.2LOG<f/50MHz> MIN	30		150	
MODE CONVERSION	SDC12	-35 MIN	1	40
		-35+17LOG<f/40MHz> MIN	40	150
		SDC21	-30 MIN	1
-30+11LOG<f/40MHz> MIN	40		150	
COMMON MODE REJECTION	SCC21	-25 MIN	1	150

BALANCED DC LINE CURRENT 720mA MAX @57VDC CONTINUOUS, 1.2A MAX @57VDC FOR 200mS
 HIPOT 2250 VDC
 OPERATING TEMPERATURE: -40 TO 85°C
 MEETS 2.5G PERFORMANCE REQUIREMENTS AS PER IEEE 802.3bz

ORIGINATED BY	DATE	TITLE	PART NO. / DRAWING NO.	STANDARD DIM.	[] METRIC DIM. AS REF.	 POWER PROTECT CONNECT
Alice Pang	2015-12-17		S558-5500-JD	TOL. IN INCH	UNIT : INCH [mm]	
DRAWN BY	DATE		FILE NAME	.X	SCALE : N/A	
JB	2017-08-10	S5585500JDPA.DWG	.XX	SIZE : A4		
				.XXX		

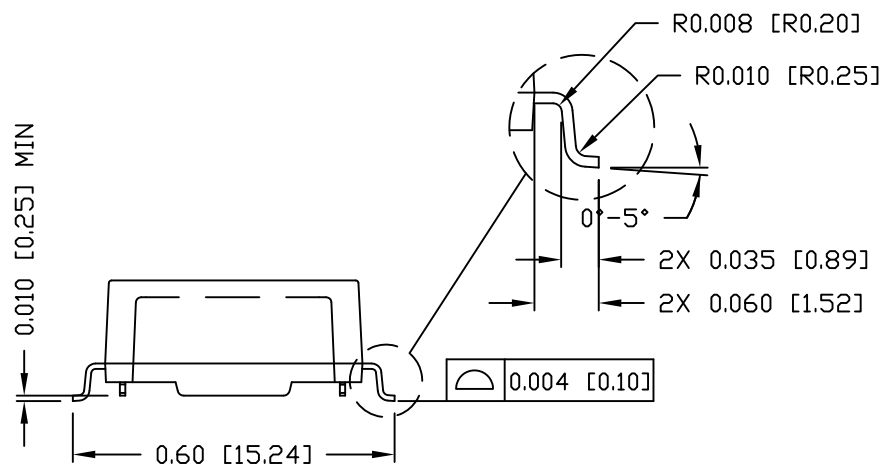
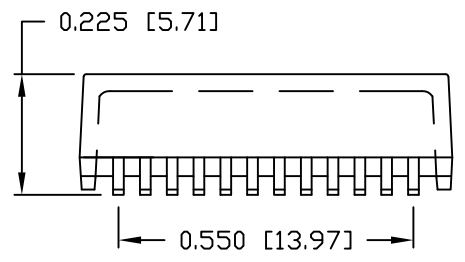
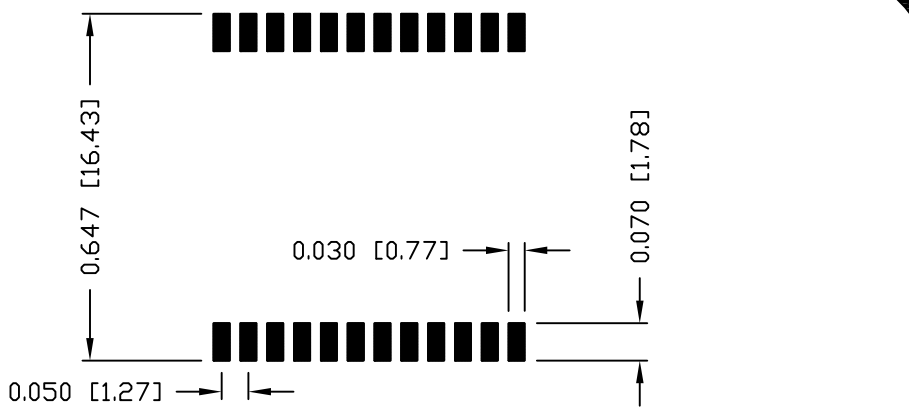
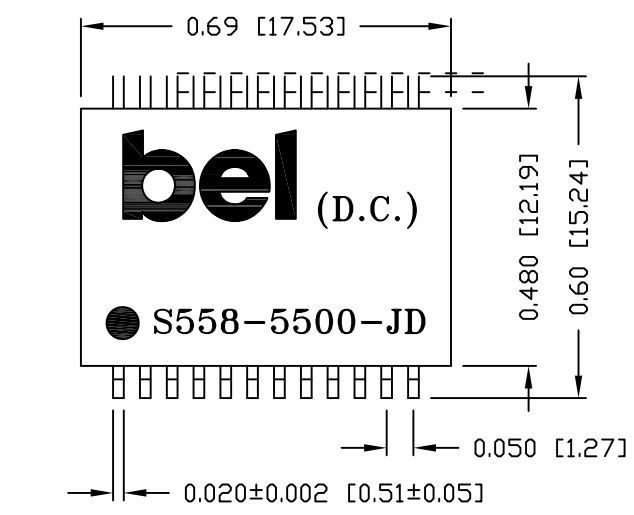
DC002(2)120214

This document is electronically generated. This is a controlled copy if used internally

THE INFORMATION CONTAINED HEREIN IS CONSIDERED "PROPRIETARY" TO BEL FUSE INC. AND SHALL NOT BE COPIED, REPRODUCED OR DISCLOSED WITHOUT THE WRITTEN APPROVAL OF BEL FUSE INC.

PRELIMINARY

SUGGESTED PCB PAD LAYOUT



NOTES:

1. STANDARD MARKING REFER TO DOC. HAND-WORK-04.
2. PACKAGE CODE: "RQS001".

ORIGINATED BY	DATE	TITLE	PART NO. / DRAWING NO.	STANDARD DIM.	[] METRIC DIM. AS REF.	REV. : PA	PAGE : 3
Lawrence Tsang	2015-12-17	MECHANICAL OUTLINE	S558-5500-JD	TOL. IN INCH	UNIT : INCH [mm]	 POWER PROTECT CONNECT	
DRAWN BY	DATE		FILE NAME	.X	SCALE : N/A		
ZC Guo	2015-12-17		S5585500JDPA.DWG	.XX ±0.01	SIZE : A4		
				.XXX ±0.005			

DC002(2)120214

This document is electronically generated. This is a controlled copy if used internally