

ISDN MAGNETICS
UPO Interface Transformer

TM00207

- Minimum interwinding breakdown voltage of 1500 Vrms

ELECTRICAL SPECIFICATIONS at 25° C

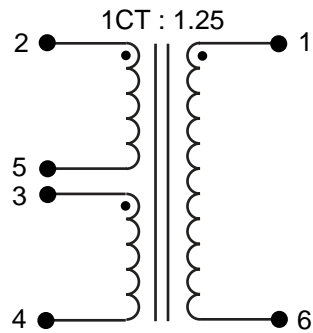
Part Number	Turns Ratio ± 2%	Primary Inductance* mH min	Leakage Inductance μH max	DCR Ω max		Interwinding Capacitance pF max
				Pri	Sec	
S559-6204-22	1CT : 2	1.75	11.5	4	10	60
S559-6204-18	1CT : 1.25	1.75	11	2.8	4.2	60
S559-6204-21	1CT : 1CT	6.50	3	1.3	1.5	60

* Measured at 10 kHz, 0.1 Vac

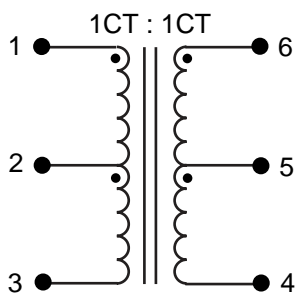
Part Number	Compatible Transceiver ICs	
	IC Mfr	IC Part Number
S559-6204-22	Siemens	PEB2096
S559-6204-18	Siemens	PEB2095

SCHEMATICS

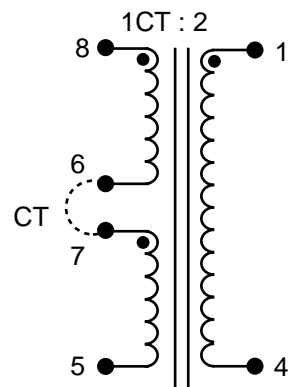
S559-6204-18



S559-6204-21



S559-6204-22



ISDN MAGNETICS

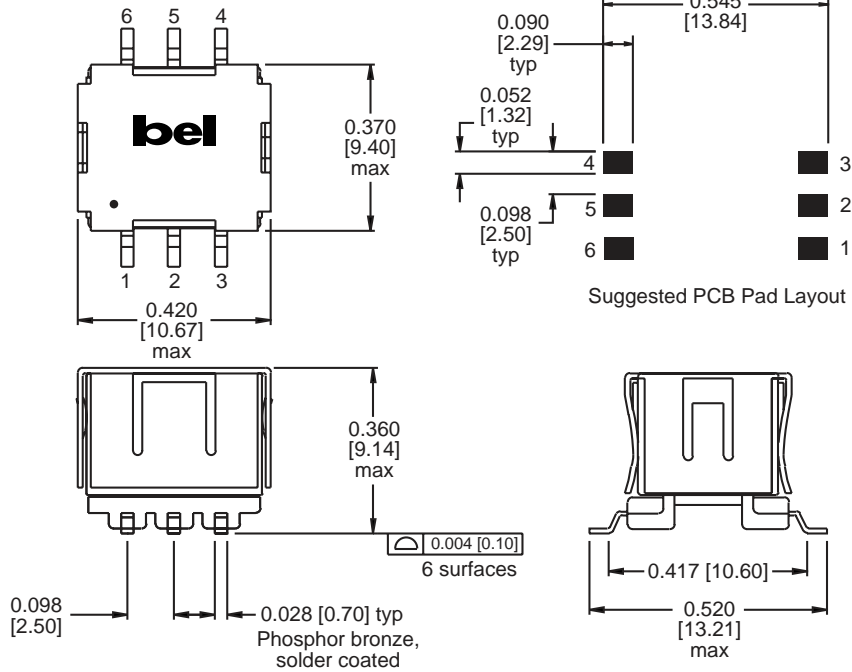
UPO Interface Transformer



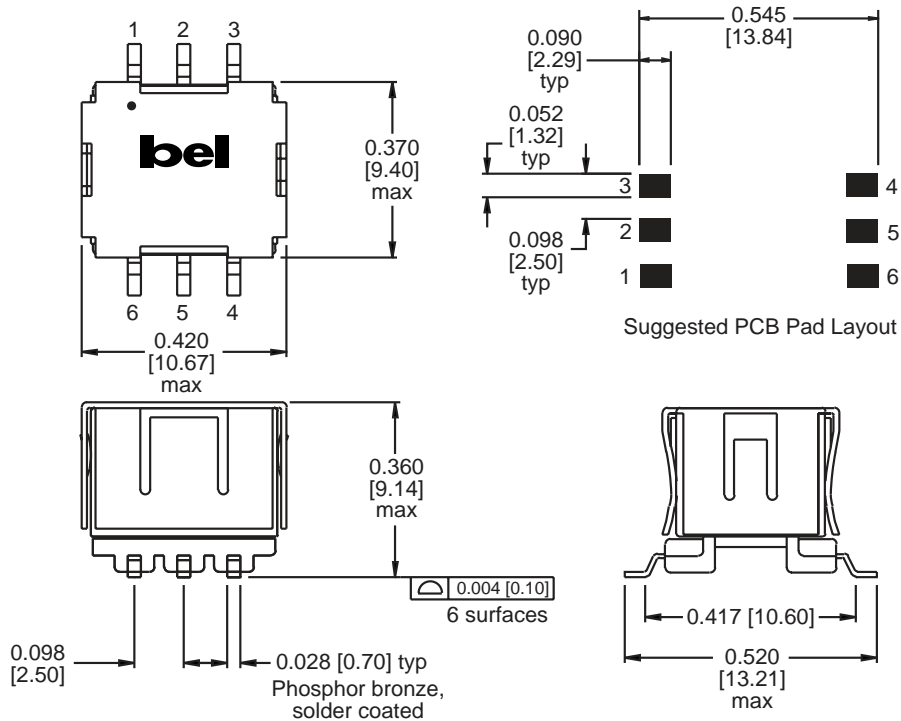
TM00207

MECHANICAL

S559-6204-18



S559-6204-21



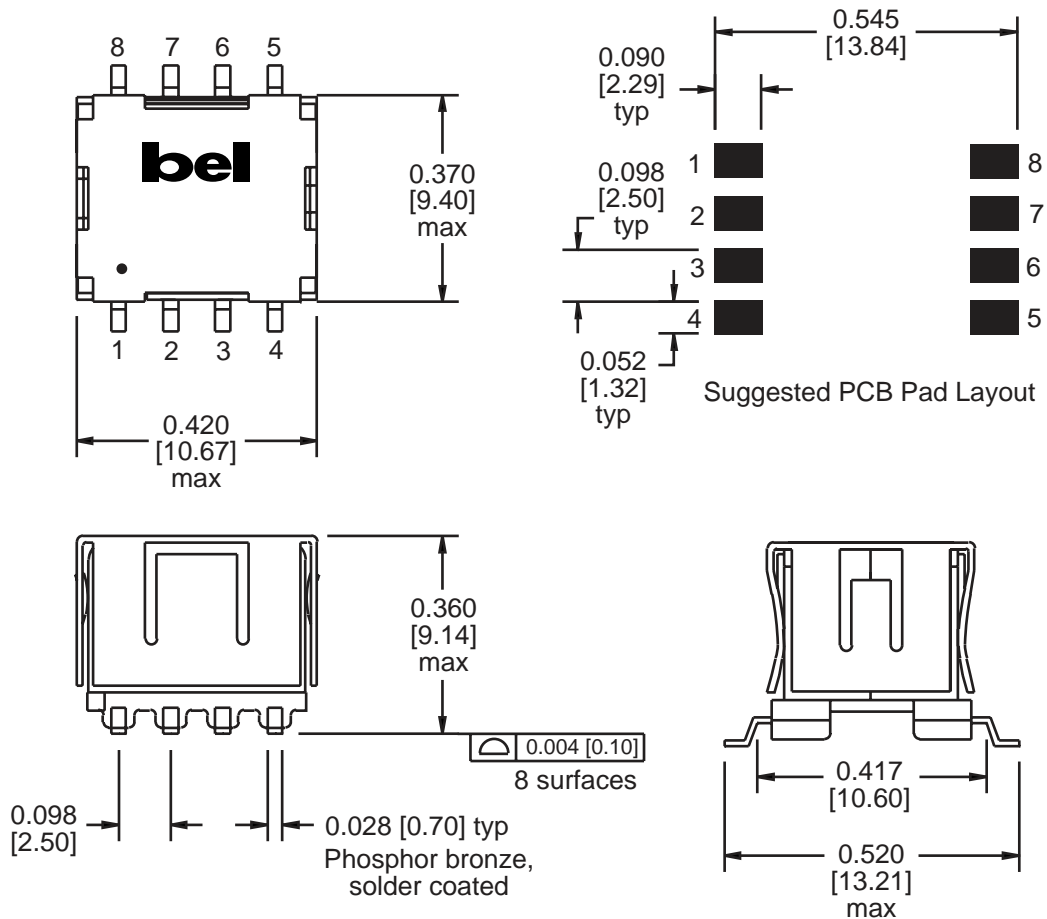
Dimensions are in inches [millimeters].
Standard dimension tolerance is ± 0.005 [0.13] unless otherwise noted.

©2000 Bel Fuse Inc. Specifications subject to change without notice. 05.00

TM00207

MECHANICAL

S559-6204-22



Dimensions are in inches [millimeters].
Standard dimension tolerance is ± 0.005 [0.13] unless otherwise noted.

©2000 Bel Fuse Inc. Specifications subject to change without notice. 05.00

CORPORATE

Bel Fuse Inc.
198 Van Vorst Street
Jersey City, NJ 07302
Tel 201-432-0463
Fax 201-432-9542
www.belfuse.com

FAR EAST

Bel Fuse Ltd.
8F / 8 Luk Hop Street
San Po Kong
Kowloon, Hong Kong
Tel 852-2328-5515
Fax 852-2352-3706
www.belfuse.com

EUROPE

Bel Fuse Europe Ltd.
Preston Technology Management Centre
Marsh Lane, Suite G7, Preston
Lancashire, PR1 8UD, U.K.
Tel 44-1772-556601
Fax 44-1772-888366
www.belfuse.com