

## Device connector, front mounting - SH-8ESS48AAC00S - 1621560

Please be informed that the data shown in this PDF Document is generated from our Online Catalog. Please find the complete data in the user's documentation. Our General Terms of Use for Downloads are valid (<http://phoenixcontact.com/download>)



Device connector for front wall, angled rotatable, SPEEDCON locking, M23, Number of positions: 8+4+PE, Type of contact: Socket, Crimp connection, Axial O-ring, 4x Ø3.2, Flange dimensions: 28 mm x 28 mm

The figure shows the product version with CAT5 interface

### Product Features

- All housing can be fitted with pin or socket contacts
- A total of eight contacts are available for signal transmission
- Reduced connection time with optional SPEEDCON fast locking system



### Key Commercial Data

Packing unit	1 pc
Custom tariff number	85366990
Country of origin	Germany

### Technical data

#### Temperature range

Ambient temperature (operation)	-40 °C ... 130 °C
---------------------------------	-------------------

#### Data of the insulating body

Note	Order information Crimp contacts, 8 x Ø 1 mm, 5 x Ø 2 mm, order separately
Coding	N
Insulator material	Polyamide (PA 6.6)
Insertion/withdrawal cycles mechanical	100
Contact connection method	Crimp connection
Type of contacts	Socket
Number of positions	13
Contact diameter of power contacts	2 mm

## Device connector, front mounting - SH-8ESS48AAC00S - 1621560

### Technical data

#### Data of the insulating body

Litz wire cross section of power contacts min.	0.25 mm <sup>2</sup>
Litz wire cross section of power contacts max.	4 mm <sup>2</sup>
Nominal current per power contact at 25°C	30 A
Nominal voltage, power contact	630 V AC
Contact diameter of signal contacts	1 mm
Litz wire cross section of signal contacts min.	0.06 mm <sup>2</sup>
Litz wire cross section of signal contacts max.	1 mm <sup>2</sup>
Nominal current per signal contact at 25°C	8 A
Nominal voltage, signal contact	50 V
Overvoltage category	III
Degree of pollution	3

#### Housing data

Housing material	Turned parts: copper zinc alloy (CuZn), die-cast parts: zinc (GD-Zn)
Flange dimensions	28 mm x 28 mm
Type of locking	SPEEDCON locking
Degree of protection (when plugged in)	IP67
	IP68
Thread type	M23

### Classifications

#### eCl@ss

eCl@ss 4.0	272607xx
eCl@ss 4.1	27260701
eCl@ss 5.0	27143424
eCl@ss 5.1	27143424
eCl@ss 6.0	27143424
eCl@ss 7.0	27440209
eCl@ss 8.0	27440102

#### ETIM

ETIM 4.0	EC002635
ETIM 5.0	EC002635

### Approvals

#### Approvals

# Device connector, front mounting - SH-8ESS48AAC00S - 1621560

## Approvals

Approvals

EAC

---

Ex Approvals

---

Approvals submitted

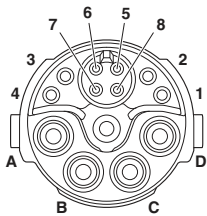
---

## Approval details

EAC
-----

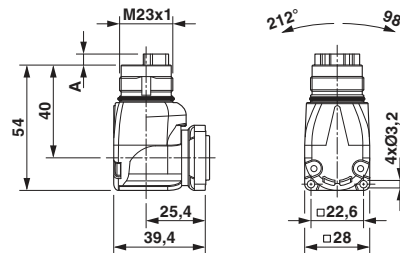
## Drawings

Schematic diagram



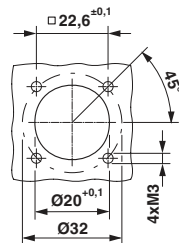
Socket pin assignment, signal

Dimensional drawing



Pin version: dimension A = 4.7 mm, socket version: dimension A = 0 mm

Dimensional drawing



Installation dimensions

---