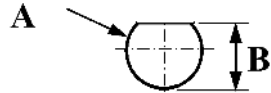
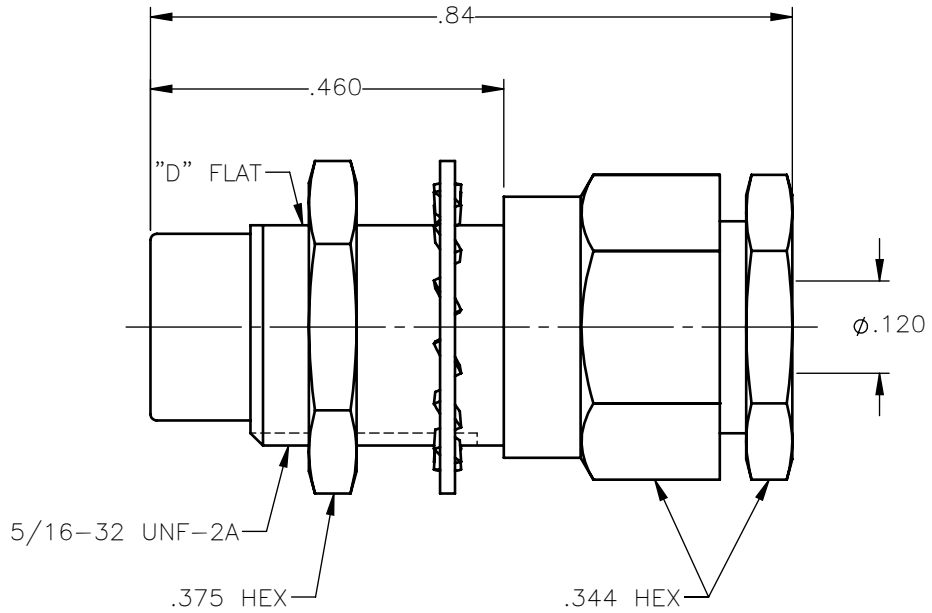


**PANEL CUT OUT**



| inches   |             |             |
|----------|-------------|-------------|
|          | Maxi        | mini        |
| <b>A</b> | <b>.333</b> | <b>.327</b> |
| <b>B</b> | <b>.300</b> | <b>.294</b> |

| REVISIONS |                 |          |          |
|-----------|-----------------|----------|----------|
| REV.      | DESCRIPTION     | DATE     | APPROVED |
| A         | INITIAL RELEASE | 03/29/18 | C.E.     |





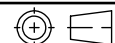
NOTES:

MATERIALS:

1. INSULATORS = VIRGIN WHITE TEFLON PER ASTM D1710, GRADE 1, TYPE I, CLASS "B".
2. LOCKWASHER = PHOSPHOR BRONZE PER ASTM B139, COPPER ALLOY C53400, TEMPER H04.
3. ALL OTHER METAL PARTS = BRASS PER ASTM B16, ALLOY C36000, TEMPER H02.

FINISHES:

1. CONTACT = GOLD PLATE PER ASTM B488-01, TYPE II, 50µin MIN, GRADE C, OVER 100 TO 200µin STRESS FREE SULFAMATE NICKEL PER QQ-N-290.
2. ALL OTHER METAL PARTS = GOLD PLATE PER ASTM B488-01, TYPE II, 30µin MIN, GRADE C OVER 100 TO 200µin COPPER STRIKE PER MIL-C-14550.

|   |                       |                |   |   |
|---|-----------------------|----------------|---|---|
| UNLESS OTHERWISE SPECIFIED DIMENSIONS ARE IN INCHES TOLERANCES ON | DWN: C.E.             | DATE: 03/29/18 |  Property of Radiall<br>This document cannot be reproduced or communicated to a third party without prior written permission of RADIALL. |                                      |
|   | CHKD: D.N.            | DATE: 03/29/18 |   |   |
| DECIMAL   | ANGLE                 | APVD: J.M.     | 75 OHM STRAIGHT MALE JACK BULKHEAD MOUNT CLAMP TYPE FOR RG-316 & SIMILAR CABLES   |   |
| REFERENCE:  | MATERIALS & FINISHES: | SEE NOTES      | SIZE: A<br>FSCM NO.: 19505<br>DWG NO.: 1703-1551-003<br>SCALE: 4:1  | REV: A<br>THIRD ANGLE PROJECTION<br> |
| ORIGINATED: C.E.<br>DATE: 03/29/18                                | SHEET 1 OF 1          |                |   |   |

1703-1551-003