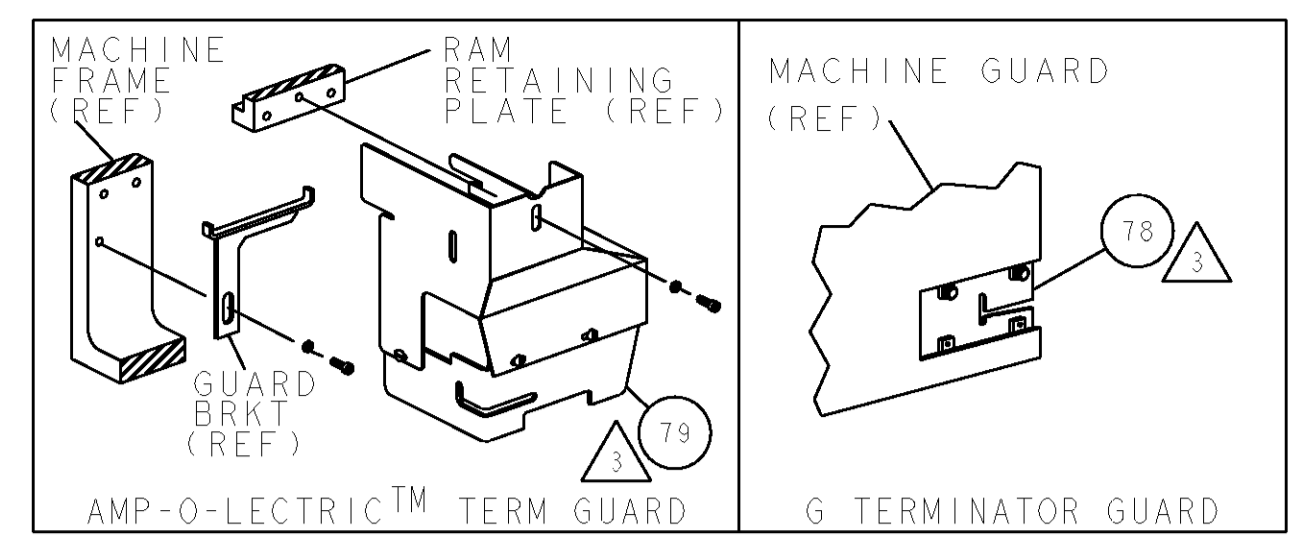


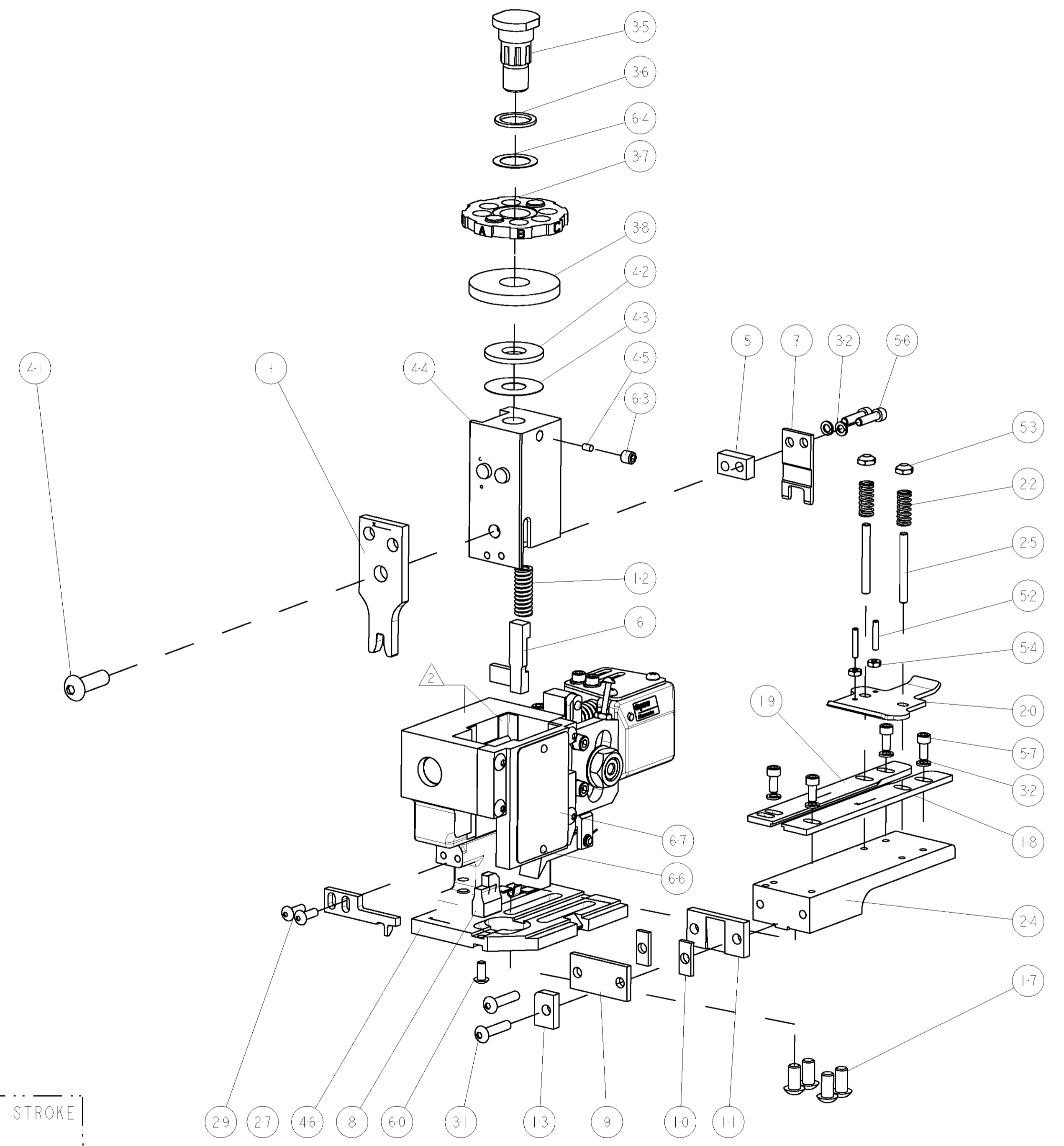
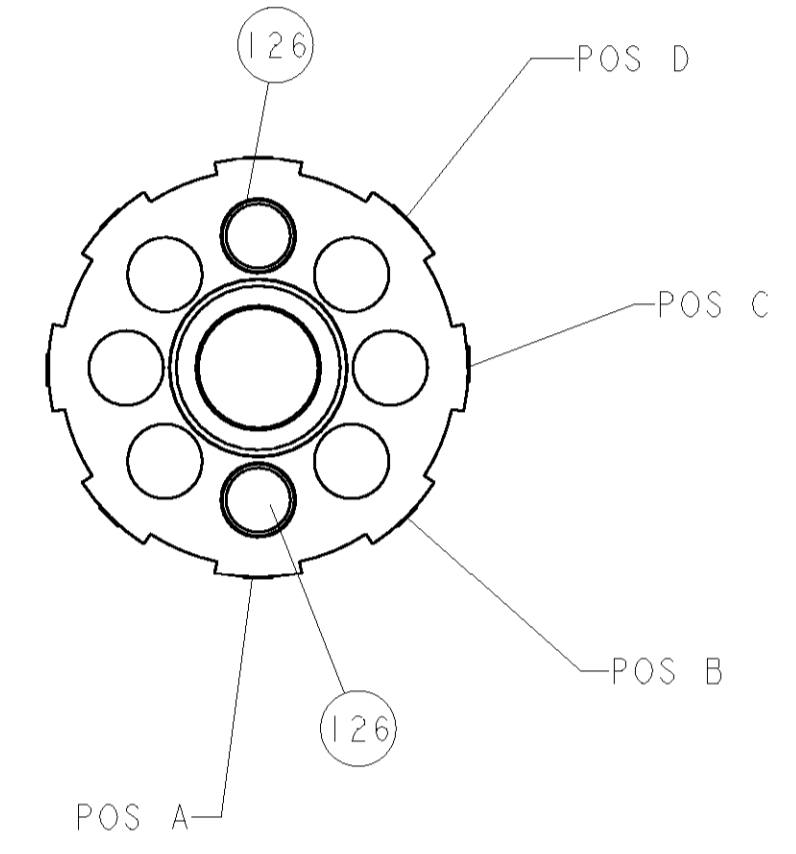
PART NUMBER		REV	FIRST USED	POWER UNIT	FEED TYPE
1852289-1		B	122500-1	LEADMAKER & BENCH MODEL G	POST FEED
1852289-2		B	565435-5	BENCH MODEL K	POST FEED
7-1852289-7		A	-	SPARE PARTS	-

- △ RECOMMENDED SPARE PARTS
- △ GREASE LIGHTLY
- △ GUARD MUST BE IN PLACE WHEN OPERATING APPLICATOR IN A BENCH MACHINE
- △ ∅.093 NICKEL PLATED, LOW CARBON STEEL WIRE.

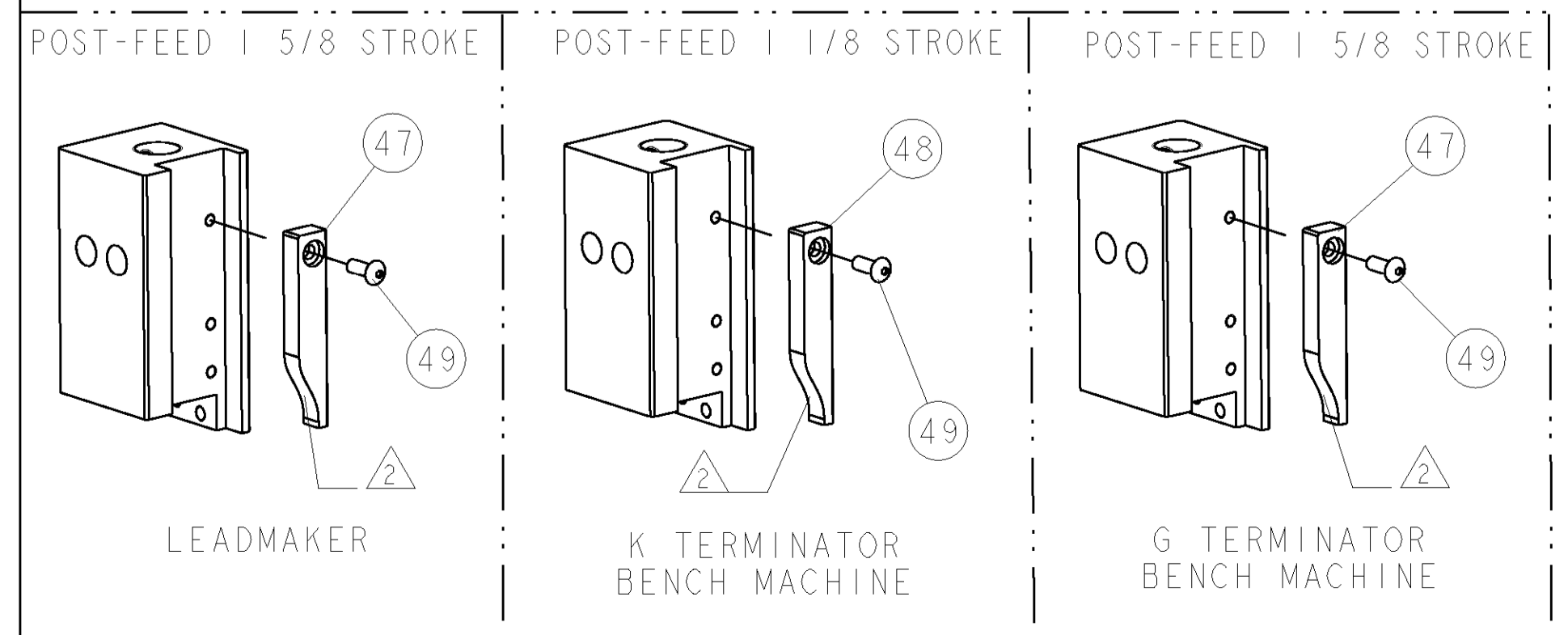


TERMINAL NAME: TAB, FASTON, .250 SERIES					
TYCO PN	-	AMP TERMINAL - AMP CRIMP SPECS			
1742352-1	-				
1742571-1	-	PAD LTR	CRIMP HEIGHT	WIRE SIZE	
-	-	A	.112±.002 [2.84±0.05mm]	∅.093	
-	-	B	-	-	
-	-	C	-	-	
-	-	D	-	-	
-	-	CRIMP	SIZE	TYPE	RANGE
-	-	WIRE	.180 [4.57mm]	F	∅.093
-	-	INSUL	-	-	-
WIRE STRIP LENGTH	TERM APPL SPEC	FEED	APPL INSTRUCTIONS	SET UP GAGE	
.243 - .258	NONE	.845	408-8039	458638-1	

LOC	DIST	REVISIONS			
A	66	P LTR	DESCRIPTION	DATE	BY
		A	RELEASED	10OCT2006	BH
		B	ECR-07-014988	29JUN2007	MY



△	2	2	-	7-354778-3	PIN, WIRE DISC, .2860	126
△	-	REF	-	455745-1	GUARD WINDOW	79
△	-	REF	-	679532-1	INSERT, GUARD	78
	-	1	-	217238-1	GENERAL INSTRUCTION PKG	72
	-	1	-	4088039	EF APPL INST 408-8039	71
	-	1	-	461264-1	PLATE, IDENTIFICATION	67
	-	2	-	21017-2	SCREW, DRIVE	66
	-	1	-	986950-1	WASHER, FLAT PRECISION	64
	-	1	-	21009-2	SCR, SET, SELF LOCKING 1/4-20 X .250	63
	-	1	-	22733-8	SCR, BHSC, SELF-LOCKING, 8-32 X .375	60
	-	4	-	2-21000-6	SCR, SKT HD CAP 8-32 X .375	57
	-	2	-	2-21000-8	SCR, SKT HD CAP 8-32 X .625	56
	-	2	-	21018-4	NUT, HEX, REG 4-40	54
	-	2	-	21022-2	NUT, LOCK, HEX, TORQUE, 8-32	53
	-	2	-	2-21006-6	SCR, SET, CUP POINT 4-40 X .625	52
	-	1	-	1-21002-7	SCR, BTN SKT CAP 6-32 X .375	49
	-	1	-	690501-3	CAM, POST FEED, 1 1/8	48
	-	1	-	690501-4	CAM, POST FEED, 1 5/8	47
	-	1	-	458980-1	SUB ASSY, APPLICATOR FRAME	46
	-	1	-	690191-1	PLUG, NYLON	45
	-	1	-	455674-1	RAM	44
	-	1	-	690125-1	SHIM SUB-ASSY	43
	-	1	-	1-690124-0	WASHER, RAM (.100)	42
	-	1	-	7-21002-9	SCR, BTN SKT HD CAP 5/16-24 X 1.00	41
	-	1	-	690223-1	SPACER, INS.	38
	-	1	-	354777-1	WIRE DISC, ASSEMBLY	37
	-	1	-	22480-5	SPRING, COMPRESSION	36
	-	1	-	690212-1	POST, RAM	35
	-	6	-	21024-4	WASHER, SPRG LOCK, REG NO 8	32
	-	2	-	3-21002-0	SCR, BTN SKT HD CAP 10-32 X .875	31
	-	2	-	2-21002-2	SCR, BTN SKT HD CAP 8-32 X .500	29
	-	1	-	1633499-1	STRIPPER	27
	-	2	-	22354-8	STUD, THREADED	25
	-	1	-	455678-1	PLATE, STRIP GUIDE	24
	-	2	-	4-22281-1	SPRING, DRAG	22
	-	1	-	454177-1	DRAG	20
	-	1	-	458030-4	STRIP GUIDE, REAR	19
	-	1	-	458031-4	STRIP GUIDE, FRONT	18
	-	4	-	3-21002-3	SCR, BTN SKT HD CAP 1/4-20 X .500	17
	-	1	-	690481-4	SPACER, HOLD DOWN	13
	-	1	-	23846-1	SPRING, DIE	12
△	-	1	-	240644-1	PLATE, REAR SHEAR	11
△	-	2	-	1-240645-0	SPACER, SHEAR PLATE	10
△	-	1	-	240642-1	PLATE, FRONT SHEAR	9
△	-	1	-	1633279-3	ANVIL, COMBINATION	8
△	-	1	-	1-240651-6	BLADE, SLUG	7
△	-	1	-	3-455892-4	HOLD DOWN, TERMINAL	6
△	-	1	-	2-240641-2	SPACER	5
△	-	1	-	2-456412-3	CRIMPER, WIRE .180 F PREMIUM	1



DIMENSIONS:		TOLERANCES UNLESS OTHERWISE SPECIFIED:		DWG: B. HIGMAN 14JUN2006		tyco Tyco Electronics Harrisburg, PA 17105-3608	
INCHES		0 PLC ±.010		CHK: B. HIGMAN 14JUN2006		NAME: END FEED HDM APPLICATOR	
1 PLC ±.010		1 PLC ±.010		APVD: J. ELBIN 14JUN2006		PRODUCT SPEC: -	
2 PLC ±.010		3 PLC ±.001		APPL INSTRUCTIONS: 408-8039		SIZE: A1 00779 C=1852289	
3 PLC ±.001		4 PLC ±.0001		MATERIAL: -		RESTRICTED TO: -	
4 PLC ±.0001		FINISH: -		WEIGHT: -		SCALE: 3:5 SHEET 1 OF 1 REV B	
MATERIAL: -		FINISH: -		CUSTOMER DRAWING		CUSTOMER VIEWABLE ASSEMBLY	