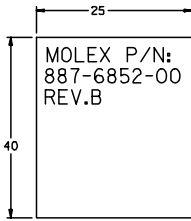
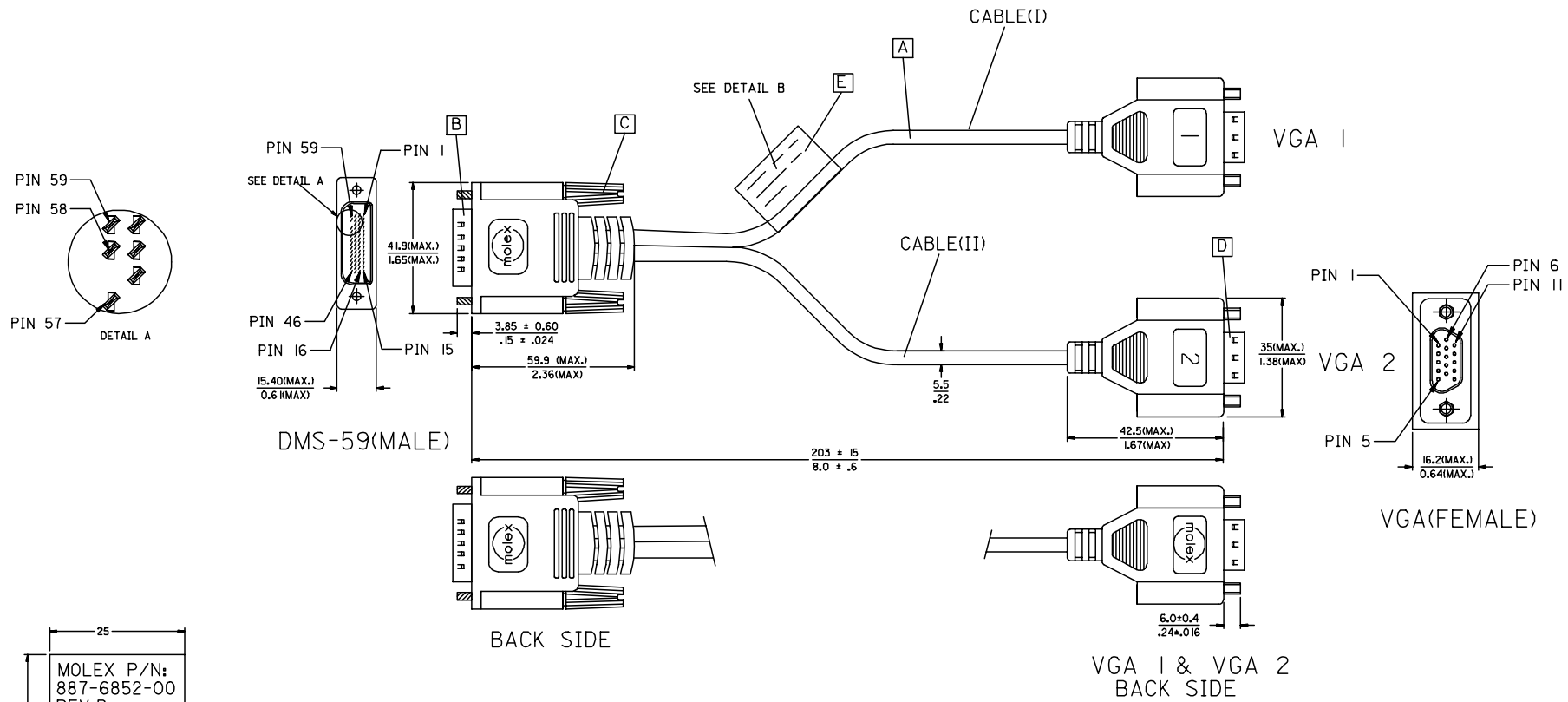


7 6 5 4 3 2 1

E
D
C
B
A

E
D
C
B
A



ENTER DESCRIPTION EC NO: DG2006-0186 DRWN:PDAI CHKD: APPR:TKAN	2006/03/09 2006/03/09 2006/03/10	QUALITY SYMBOLS ▽=0 ◻=0	GENERAL TOLERANCES (UNLESS SPECIFIED)		DIMENSION STYLE MM/IN		SCALE ---	DESIGN UNITS METRIC	THIRD ANGLE PROJECTION		
				4 PLACES ± --- ± --- 3 PLACES ± --- ± --- 2 PLACES ± --- ± --- 1 PLACE ± --- ± ---	mm INCH	DRAWN BY DATE PDAI 2006/03/07	TITLE DMS59(M) TO TWO VGA(F) ADAPTER CABLE				
				ANGULAR ± ---°		CHECKED BY DATE ZXDENG 2006/03/07	MOLEX INCORPORATED				
				DRAFT WHERE APPLICABLE MUST REMAIN WITHIN DIMENSIONS		APPROVED BY DATE BORON 2006/03/07	MATERIAL NO. 887685200	DOCUMENT NO. SD-88744-096	SHEET NO. 1 OF 2		

6 5 4 3 2 1

WIRING DIAGRAM:

SHIELD	SHIELD	GROUND
PIN 59	PIN 7	GROUND(GREEN)
PIN 58	PIN 2	RGB1_GREEN
PIN 57	PIN 5	GROUND(ANALOG)
PIN 56	PIN 13	RGB1_HSYNC
PIN 55	PIN 14	RGB1_VSYNC
PIN 54	PIN 10	GROUND(SYNCS)
PIN 7	PIN 12	RGB1_SDA(DDC DATA)
PIN 6	PIN 15	RGB1_SCL(DDC CLOCK)
PIN 5	PIN 9	+5V
PIN 4	PIN 8	GROUND(BLUE)
PIN 3	PIN 3	RGB1_BLUE
PIN 2	PIN 1	RGB1_RED
PIN 1	PIN 6	GROUND(RED)
DMS-59	VGA1	CABLE FUNCTION

SHIELD	SHIELD	GROUND
PIN 46	PIN 7	GROUND(GREEN)
PIN 47	PIN 2	RGB2_GREEN
PIN 49	PIN 5	GROUND(ANALOG)
PIN 50	PIN 13	RGB2_HSYNC
PIN 51	PIN 14	RGB2_VSYNC
PIN 52	PIN 10	GROUND(SYNCS)
PIN 9	PIN 12	RGB2_SDA(DDC DATA)
PIN 10	PIN 15	RGB2_SCL(DDC CLOCK)
PIN 11	PIN 9	+5V
PIN 12	PIN 8	GROUND(BLUE)
PIN 13	PIN 3	RGB2_BLUE
PIN 14	PIN 1	RGB2_RED
PIN 15	PIN 6	GROUND(RED)
DMS-59	VGA2	CABLE FUNCTION

NOTE:1. OVERMOLD SPECIFICATION

- 1.1 DMS-59 BOOT MOLDED WITH SNOW WHITE PVC RESIN, UL94V-0.
- 1.2 VGA BOOT MOLDED WITH BLUE PVC RESIN, UL94V-0.

2. MECHANICAL SPECIFICATION

- 2.1 CABLE SHOULD STAND THE PULL FORCE 89-111N FOR 30 SECONDS WITH NO VISIBLE TERMINATION DAMAGE.
- 2.2 CABLE SHOULD PASS THE FLEX TEST IN 100 CYCLES AT EACH OF PLANES, PER EIA 364-41, CONDITION I.

3. CABLE ASSEMBLY ELECTRICAL SPECIFICATION

- 3.1 HI-POT VOLTAGE: 300VDC FOR 10ms.
- 3.2 INSULATION RESISTANCE: 20 MEGA Ohms MIN.
- 3.3 CONNECTION RESISTANCE: 2 Ohms MAX.
- 3.4 COAXIAL LINES CHARACTERISTIC IMPEDANCE: 75 ±10% Ohms @TDR
- 3.5 WRAP COPPER TAPE OVER BRAID, THEN CRIMP THE METAL CAN ON COPPER TAPE WITH 360°.
- 4. DVI CONNECTOR PLATING: AU FLASH PLATING.
- 5. SCREW SPEC.: 4-40 UNC.

MATERIAL LIST:

E	LABEL	I
D	VGA D-SUB CONNECTOR(FEMALE)	2
C	LFH THUMB SCREW 4-40 UNC	2
B	DMS-59 PLUG ASSY'(NATURE)	1
A	DVI ANALOG CABLE BLACK	2
ITEM	DESCRIPTION	QTY.

ENTER DESCRIPTION EC NO: DG2006-0186 DRWN:PDAI 2006/03/09 CHKD: 2006/03/09 APPR:TKAN 2006/03/10 REV	QUALITY SYMBOLS	GENERAL TOLERANCES (UNLESS SPECIFIED)		DIMENSION STYLE		SCALE	DESIGN UNITS	THIRD ANGLE PROJECTION
	▽=0 ▽=0	mm	INCH	MM/IN		---	METRIC	
		4 PLACES ±---	±---	DRAWN BY DATE		TITLE		
		3 PLACES ±---	±---	PDAI 2006/03/07		DMS59(M) TO TWO VGA(F) ADAPTER CABLE		
	2 PLACES ±---	±---	CHECKED BY DATE		MOLEX MOLEX INCORPORATED			
	1 PLACE ±---	±---	ZXDENG 2006/03/07		MATERIAL NO. DOCUMENT NO. SHEET NO.			
	ANGULAR ±---°		APPROVED BY DATE		887685200 SD-88744-096 2 OF 2			
	DRAFT WHERE APPLICABLE MUST REMAIN WITHIN DIMENSIONS		BORON 2006/03/07		THIS DRAWING CONTAINS INFORMATION THAT IS PROPRIETARY TO MOLEX INCORPORATED AND SHOULD NOT BE USED WITHOUT WRITTEN PERMISSION			