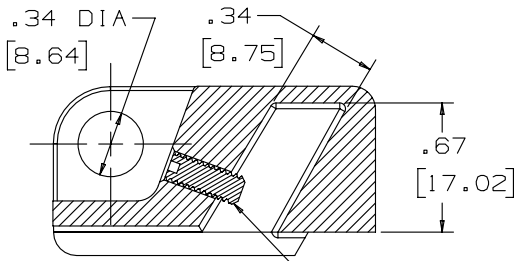
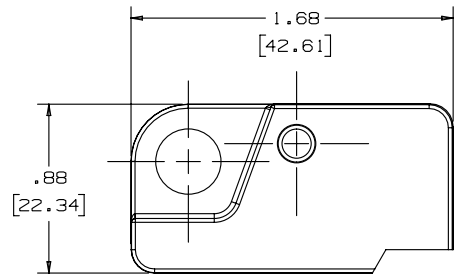
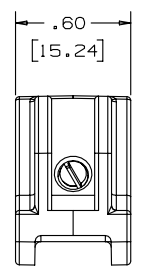
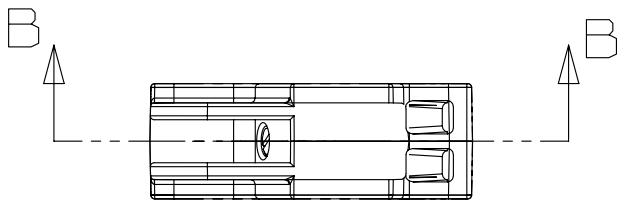


2

1

THIS COPY IS PROVIDED ON A RESTRICTED BASIS AND IS NOT TO BE USED IN ANY WAY DETRIMENTAL TO THE INTERESTS OF PANDUIT CORP.


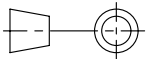


SECTION B-B
10-32 X 1/2" LONG STAINLESS STEEL
SLOTTED CUP POINT SET SCREW.

- NOTES:
1. COLOR - RED
 2. PACKAGING - 1 EACH, WITH INSTRUCTIONS ON BACK SIDE OF PACKAGING.
 3. DIMENSION IN BRACKETS ARE METRIC.



REV	DATE	BY	CHK	APR	DESCRIPTION	ECN
3	1/5/15	RVU	MJPF	MSAD	REMOVED PN: PSL-WSG FROM TITILE.	GAECN02496
2	6/16/14	RVU	MJPF	MSAD	REVISED NOTE 2. ADD TOLEREANCES.	GAECN02078
1	10/5/06	RVU			MISC. REVISION.	4712
R	10/8/03	RVU			DRAWING RELEASE	2965

TITLE		PSL-WS WALL SWITCH LOCKOUT CUSTOMER DRAWING		
ITEM REVISION NAME		100276AJ/04		
DATASET FILE NAME		100276AJ_C10084_PSL-WS/04D		
UNLESS OTHERWISE SPECIFIED, DIMENSIONAL TOLERANCES ARE: IN [mm]		 RED NYLON		
.X ± .1 [2.54] .XXX ± .03 [.762] .XX ± .05 [1.27] ANGLES ± 5 °				
 THIRD ANGLE PROJECTION		DRAWING NUMBER: C10084		
DRAWN BY	DATE	CHK	SCALE	SIZE
RVU	10/8/03	MSAD	FULL	A

2

1