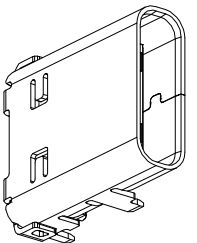
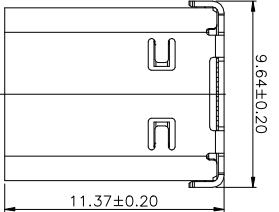


THIS IS A C.A.D. GENERATED DRAWING
DO NOT MAKE MANUAL REVISIONS TO MASTER.

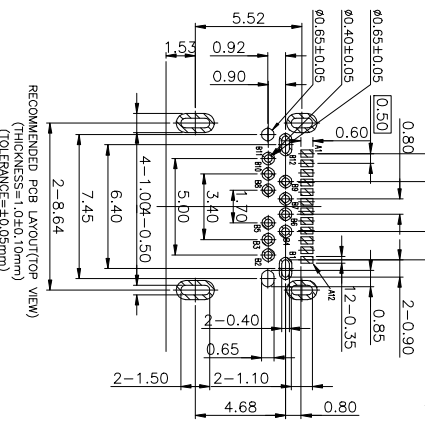
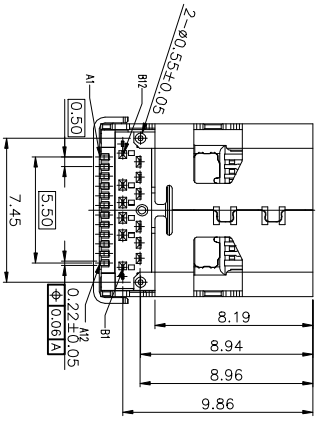
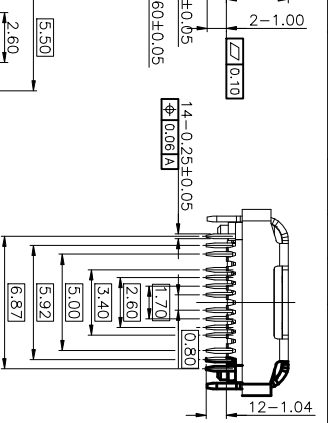
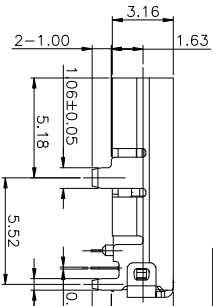
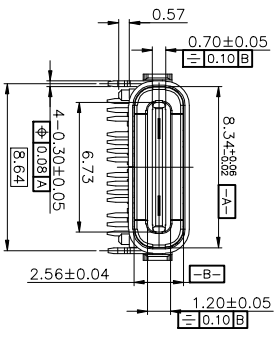
TOLERANCE UNLESS OTHERWISE SPECIFIED IN MM:
0.0 ±0.35 ANGLE 0.5°
0.00 ±0.25 0.0 ±2°
0.00 ±0.15 0.00 ±1°



3D VIEW

Pin	Signal Name	Description	Mating Pin	Signal Name	Description	Mating Pin
A1	GND	Ground plane	B12	GND	Ground plane	Pin
A2	DP2/DM2	Positive half of differential TX differential pair	B11	DP2/DM2	Positive half of differential TX differential pair	Pin
A3	DP1/DM1	Negative half of differential TX differential pair	B10	DP1/DM1	Negative half of differential TX differential pair	Pin
A4	VBUS	5VDC Power	B9	VBUS	5VDC Power	Pin
A5	CC1	Configuration Channel	B8	CC1	Configuration Channel	Pin
A6	DP1	Positive half of differential TX differential pair - Channel 1	B7	DP1	Positive half of differential TX differential pair - Channel 1	Pin
A7	DM1	Negative half of differential TX differential pair - Channel 1	B6	DM1	Negative half of differential TX differential pair - Channel 1	Pin
A8	DM2	Negative half of differential TX differential pair - Channel 2	B5	DM2	Negative half of differential TX differential pair - Channel 2	Pin
A9	VBUS	5VDC Power	B4	VBUS	5VDC Power	Pin
A10	DP2	Positive half of differential TX differential pair	B3	DP2	Positive half of differential TX differential pair	Pin
A11	DM2	Negative half of differential TX differential pair	B2	DM2	Negative half of differential TX differential pair	Pin
A12	GND	Ground plane	B1	GND	Ground plane	Pin

- NOTES:
- MATERIAL SPECIFICATION
 - SHELL: SUS304R-1/4H T=0.30mm
 - SIGNAL: SUS301R-H T=0.10mm
 - RFI PAD: SUS301R-H T=0.08mm
 - HOUSING: PA46+20%G.F. UL94-V0 BLACK
 - TERMINAL: NKE012R-H T=0.10mm
 - PLATING SPECIFICATION
 - CONTACT: GOLD PLATING ON MATING AREA, MATTE Sn 120~200u" ON SOLDERING AREA, 80~150u" NICKEL UNDER PLATING OVERALL



RECOMMENDED FOR LAYOUT (TOP VIEW)
(THICKNESS=1.020, 1.0mm)
(TOLERANCE=±0.025mm)

PART NUMBERS	
GOLD FLASH	690-024-231-031
15u" GOLD	690-024-331-031
30u" GOLD	690-024-831-031

- 2-2. SHELL: NICKEL PLATED.
- MECHANICAL PERFORMANCE
 - INSERTION FORCE: 5N~20N.
 - WITHDRAWAL FORCE: 8N~20N.
 - DURABILITY: 10000 CYCLES.
- ELECTRICAL PERFORMANCE
 - CURRENT RATING: 1A.
 - ILCR: CONTACT: 40 MΩ MAX(INITIAL).
 - INSULATION RESISTANCE: UNMATED: 100 MΩ MIN.
 - DIELECTRIC WITHSTAND VOLTAGE: 100V AC.
- IR REFLOW:
THE PEAK TEMPERATURE ON BOARD SHALL BE MAINTAINED FOR 10 SECONDS AT 260±5°C.
- OPERATING TEMPERATURE RANGE: -40°C~85°C (WITHOUT LOSS FUNCTION).

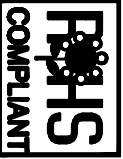
HYBRID MOUNT (THRU-HOLE AND SURFACE MOUNT)

USB 3.1 TYPE C FEMALE

EDAC INC
TORONTO, ONTARIO
CANADA

YOUR CONNECTION TO QUALITY & SERVICE

ACAD REFERENCE NO.: 690-024-231-031	DRAWN: N.SONDH	DATE: JUN/29/2015
CHECKED:	DATE:	
PART NUMBER	SEE TABLE	SHEET 1 OF 2
DRAWING NUMBER	690-024-231-031	ISSUE
		2



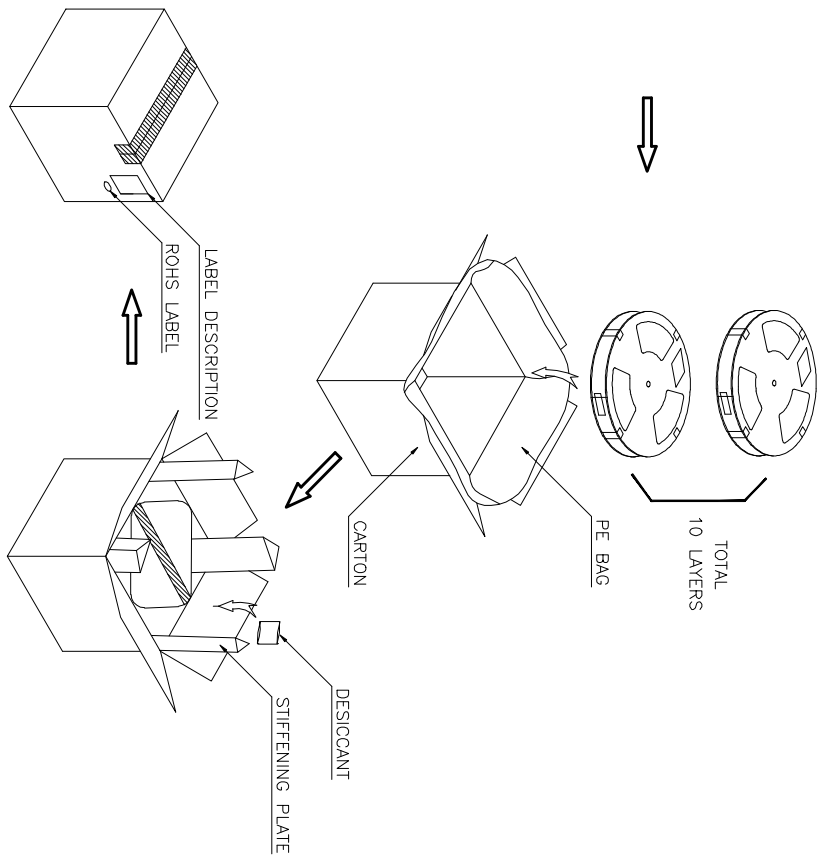
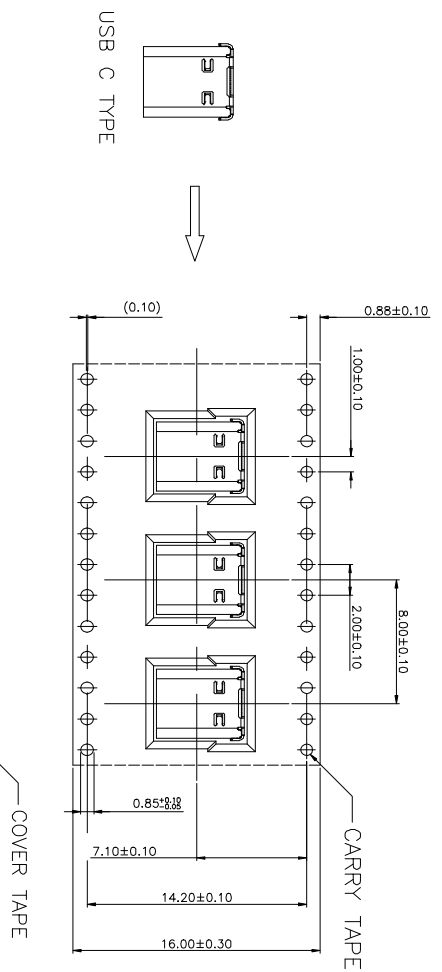
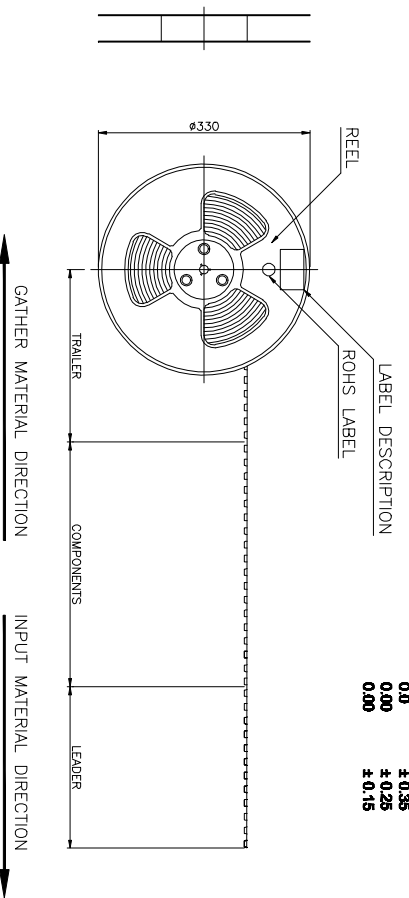
THIS SERIES FULLY CONFORMS TO THE
EUROPEAN UNION DIRECTIVES
2011/85/EU FOR ROHS COMPLIANCY.

TOLERANCE UNLESS OTHERWISE SPECIFIED IN MM:

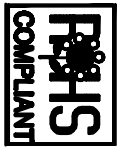
0.0	±0.35	ANGLE	±3°
0.00	±0.25	0.0	±2°
0.00	±0.15	0.00	±1°

THIS IS A C.A.D. GENERATED DRAWING
DO NOT MAKE MANUAL REVISIONS TO MASTER.

ISSUE NUMBER	1
ORIGINAL	



- NOTES:
1. THE START AND END OF EACH REEL, BASED ON THE ACTUAL QUANTITY, RESERVED 5--15PCS SPACE;
 2. COVER TAPE AND CARRY TAPE PEEL, 10g~130g; PEEL DEG.: 165°~175°;
 3. QTY: 800PCS/REEL, 10REEL/CARTON, TOTAL 8000PCS/CARTON;



THIS SERIES FULLY CONFORMS TO THE EUROPEAN UNION DIRECTIVES 2011/65/EU FOR ROHS COMPLIANCY.

USB 3.1 TYPE C FEMALE

EDAC INC
TORONTO, ONTARIO
CANADA
YOUR CONNECTION TO QUALITY & SERVICE

THESE DRAWINGS AND SPECIFICATIONS ARE THE PROPERTY OF EDAC INC. AND SHALL NOT BE REPRODUCED OR COPIED OR USED AS THE BASIS FOR THE MANUFACTURE OR SALE OF APPARATUS WITHOUT WRITTEN PERMISSION.

ACAD REFERENCE NO.:	690-024-231-031
DRAWN:	N.SONDH
DATE:	JUN.29/2015
CHECKED:	
DATE:	
PART NUMBER	
DRAWING NUMBER	SEE TABLE
SHEET NUMBER	2 OF 2
ISSUE	2