

NON-ISOLATED DC/DC CONVERTERS

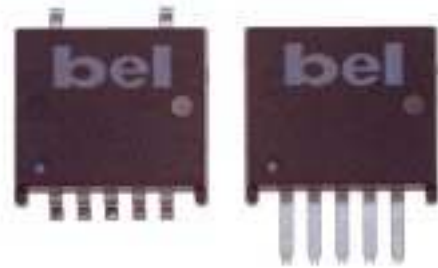
3.3V Input / 0.9V – 2.5V Output / 7A



BP03x7AH-07C

S7AH-07C / V7AH-07C Series

- Nonisolated
- Compact, low profile surface mount package
- Fixed frequency
- High efficiency means less power dissipation
- Excellent thermal performance
- Optimized for cost
- Remote on/off
- Undervoltage lockout (UVLO)
- Over current and short circuit protection
- Industrial temperature range -40° to +85° C



Description

The Bel S7AH-07C and V7AH-07C modules are a series of non-isolated, step down DC/DC power converters that operate from a nominal 3.3V source. These converters are available in a range of output voltages from 0.9V to 2.5V. They are packaged in a compact, overmolded package rated at 7A. Optional lead forming provides a vertical mount product for minimal footprint or a surface mount option for a very low profile. Standard features include remote on/off, over current and short circuit protection, and output voltage adjust. These products may be used almost anywhere low voltage silicon is employed and a 3.3V source is available. Typical applications include file servers, routers, line cards and other computing and communications equipment.

Applications

- Distributed power architectures
- Data networking equipment
- Telecommunications
- Computers and peripherals

Options

- Wide range adjustable output

Part Number Selection

Output Voltage	Input Voltage	Max. Output Current	Max. Output Power	Typical Efficiency	Part Number Surface Mount	Part Number Vertical Mount
2.5V	3.3V	7A	17.5W	92%	S7AH-07C250	V7AH-07C250
1.8V	3.3V	7A	12.6W	88%	S7AH-07C180	V7AH-07C180
1.5V	3.3V	7A	10.5W	86%	S7AH-07C150	V7AH-07C150
1.2V	3.3V	7A	8.4W	83%	S7AH-07C120	V7AH-07C120
0.9V	3.3V	7A	6.3W	80%	S7AH-07C090	V7AH-07C090
0.9V - 2.5V	3.3V	7A	17.5W	92%	S7AH-07C1A0	V7AH-07C1A0

©2003 Bel Fuse Inc. Specifications subject to change without notice. 02.03

BP03x7AH-07C

Absolute Maximum Ratings

Parameter	Symbol	Min	Typical	Max	Unit
Continuous Input Voltage	Vin	-0.3		6	V
Output Enable Terminal Voltage	Vouten	-0.3		6	V
Ambient Temperature	Tamb	-40		85	°C
Storage Temperature	Tstor	-40		125	°C

Note: Use beyond the maximum ratings may cause a reliability degradation of the DC/DC converter or may permanently damage the device.

Input Specifications

Parameter	Module	Symbol	Min	Typical	Max	Units
Operating Input Voltage	All	Vin	3		3.6	V
Input Current	2.5V 1.8V 1.5V 1.2V 0.9V	lin			6.6 5.3 4.6 3.8 3.0	A
No Load Input Current	All				110	mA
Remote Off Input Current				7	15	mA
Input Reflected Ripple Current ¹	All			50	80	mA _{rms}
Input Reflected Ripple Current (P-P) ¹	All			150	250	mApk
I ² t Inrush Current Transient	All			0.08	0.16	A ² s
Turn On Voltage Threshold	All		2.5		2.8	V
Turn Off Voltage Threshold	All			2.4		V

Note: Input capacitance 270µF/16V, ESR = 0.03 Ω max at 100kHz @ 25° C.
1. With simulated source impedance of 500nH, 5Hz to 20MHz.

NON-ISOLATED DC/DC CONVERTERS

3.3V Input / 0.9V – 2.5V Output / 7A



BP03x7AH-07C

Output Specifications

Parameter	Module	Symbol	Min	Typical	Max	Units
Output Voltage Set Point ¹	2.5V	Vout	2.450 1.764 1.470 1.176 0.882	2.500	2.550	V
	1.8V			1.800	1.836	
	1.5V			1.500	1.530	
	1.2V			1.200	1.224	
	0.9V			0.900	0.918	
Load Regulation	2.5V			3	10	mV
	1.8V			3	10	
	1.5V			3	10	
	1.2V			1	5	
	0.9V			1	5	
Line Regulation	2.5V			3	10	mV
	1.8V			3	10	
	1.5V			3	10	
	1.2V			1	5	
	0.9V			1	5	
Regulation Over Temperature (-40° to +85° C)	2.5V			20	40	mV
	1.8V			15	30	
	1.5V			15	30	
	1.2V			10	20	
	0.9V			8	15	
Total Output Voltage Regulation	2.5V			26	60	mV
	1.8V			21	50	
	1.5V			21	50	
	1.2V			12	30	
	0.9V			10	25	
Output Ripple and Noise ²	2.5V			40	80	mVp-p
	1.8V			40	80	
	1.5V			40	80	
	1.2V			40	80	
	0.9V			40	70	
Output Ripple and Noise ²	All			10	20	mVrms
Output Current Range	All	Iout	0		7	A
Output DC Current Limit	All	Ioutlim	8.4		16	A
Short Circuit Surge	All	Ioutsurge		0.08	0.12	A ² s
Turn on Time	All	Ton		7	15	ms
Overshoot at Turn On	All			0	1	%
Output Capacitance	All	Cout	0		2200	μF

Note: All specifications are typical at nominal input, full load at 25° C unless otherwise stated.

1. Vin = 3.3V, Iout = full load, Ta = 25° C.

2. 0 - 20MHz, 1μF ceramic cap and 10μF aluminum cap on output.

BP03x7AH-07C

Output Specifications

Parameter	Module	Symbol	Min	Typical	Max	Units
Transient Response ³						
ΔV 50% to 100% of Max Load	2.5V			120	180	mV
Settling Time		Ts		40	80	μs
ΔV 100% to 50% of Max Load				120	180	mV
Settling Time		Ts		40	80	μs
Transient Response ³						
ΔV 50% to 100% of Max Load	1.8V			120	180	mV
Settling Time		Ts		40	80	μs
ΔV 100% to 50% of Max Load				120	180	mV
Settling Time		Ts		40	80	μs
Transient Response ³						
ΔV 50% to 100% of Max Load	1.5V			100	150	mV
Settling Time		Ts		40	80	μs
ΔV 100% to 50% of Max Load				100	150	mV
Settling Time		Ts		40	80	μs
Transient Response ³						
ΔV 50% to 100% of Max Load	1.2V			50	100	mV
Settling Time		Ts		40	80	μs
ΔV 100% to 50% of Max Load				50	100	mV
Settling Time		Ts		40	80	μs
Transient Response ³						
ΔV 50% to 100% of Max Load	0.9V			50	100	mV
Settling Time		Ts		40	80	μs
ΔV 100% to 50% of Max Load				50	100	mV
Settling Time		Ts		40	80	μs

Note: All specifications are typical at nominal input, full load at 25° C unless otherwise stated.
 3. di/dt = 0.5A/ μs , Ta = 25° C without external load capacitance.

NON-ISOLATED DC/DC CONVERTERS

3.3V Input / 0.9V – 2.5V Output / 7A



BP03x7AH-07C

General Specifications

Parameter	Module	Symbol	Min	Typical	Max	Units
Efficiency ¹	2.5V	η	90	92		%
	1.8V		86	88		
	1.5V		84	86		
	1.2V		81	83		
	0.9V		78	80		
Switching Frequency	All	Fsw	250	300	340	kHz
Output Voltage Trim Range ²	1.8V		50		146	%
Weight	All			5		g

1. Vin=3.3V, full load and Ta=25° C.

2. See graphs on page 9.

Control Specifications

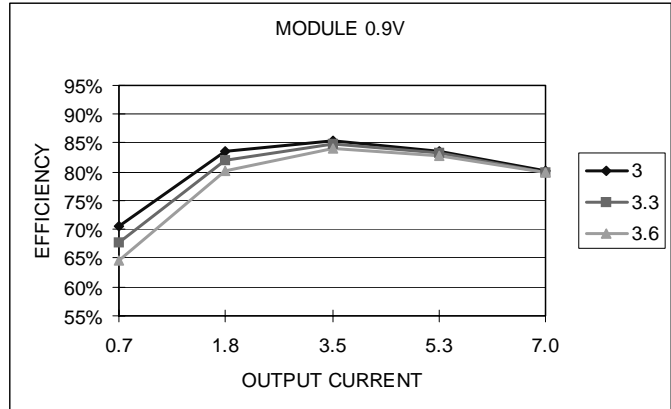
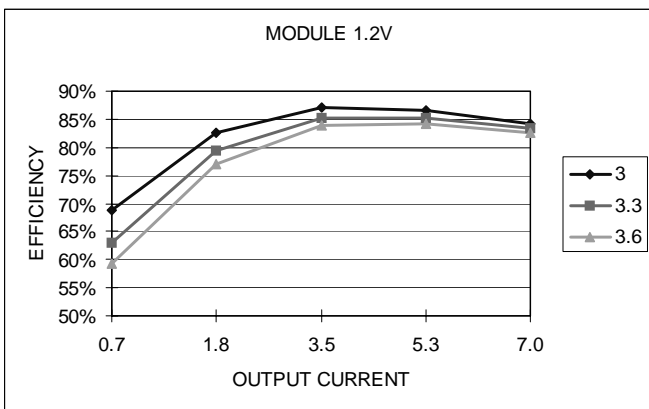
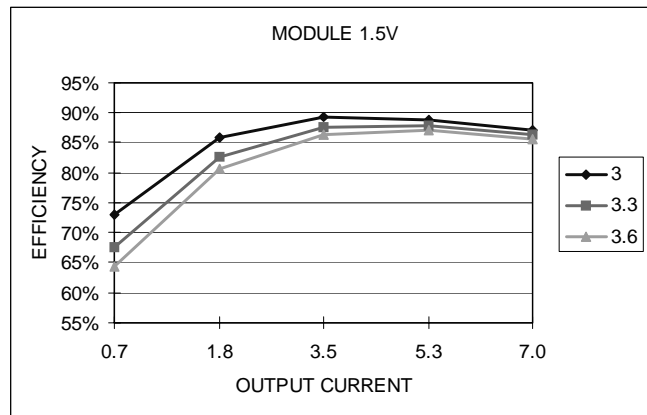
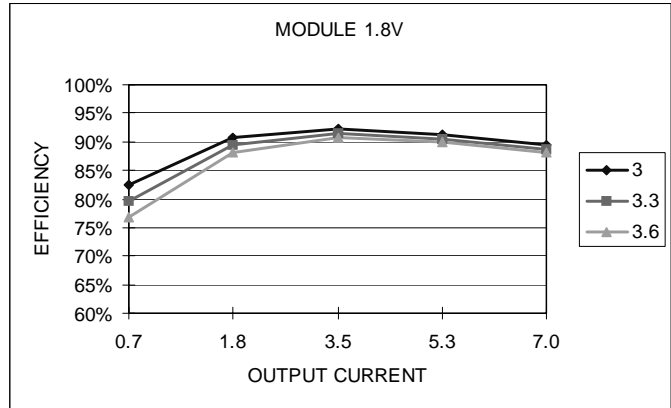
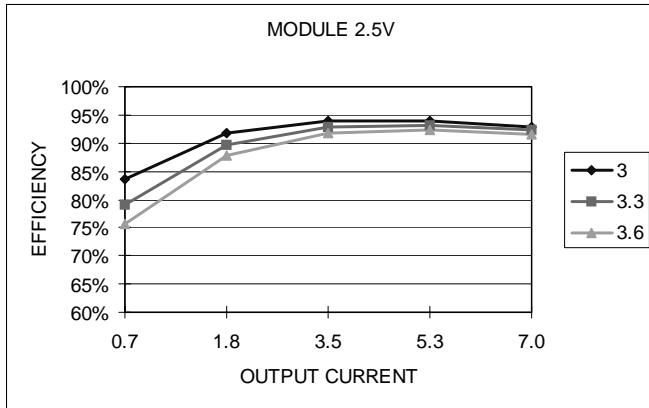
Parameter	Module	Symbol	Min	Typical	Max	Units
Remote On/Off ³	All	Vouten				V
Signal Low (Unit Off)	All		-0.3		1	V
Signal High (Unit On)	All		1.8		3.6	V

3. With remote on/off pin 1 open, the module is on.

Note: On/off pin designed to work with an open collector/drain switch.

BP03x7AH-07C

Efficiency Data



NON-ISOLATED DC/DC CONVERTERS

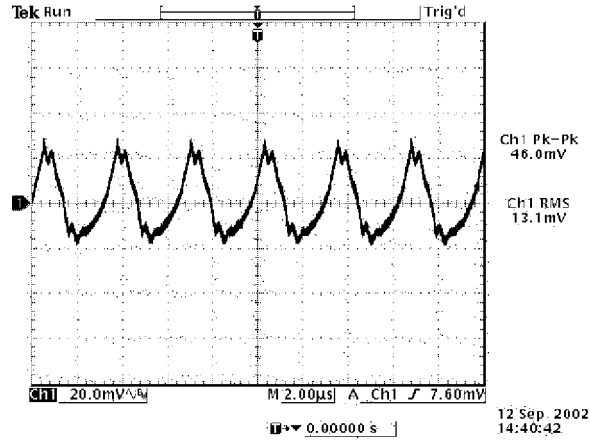
3.3V Input / 0.9V – 2.5V Output / 7A



BP03x7AH-07C

Ripple and Noise

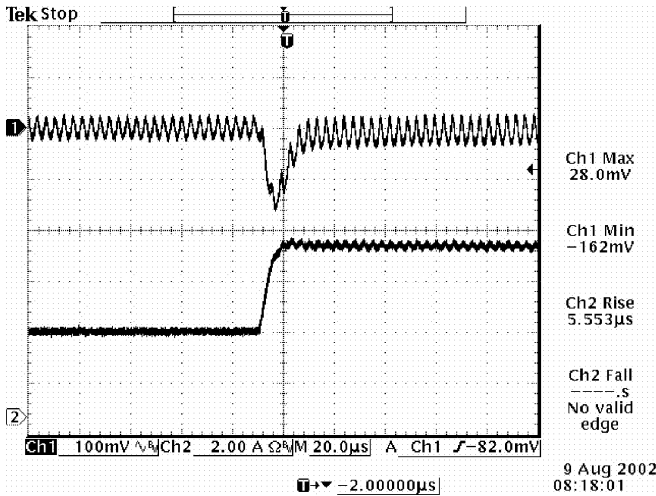
1 μ F ceramic cap and 10 μ F aluminum cap added at the output.



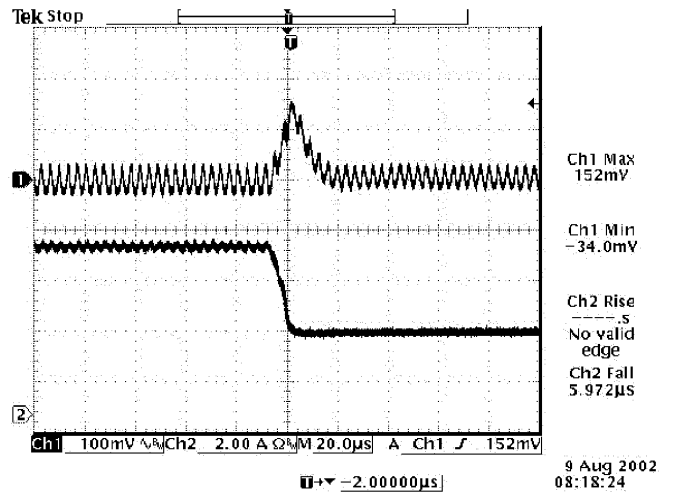
Ripple and noise at full load and 3.3Vdc input, 1.8Vdc output and Ta=25° C

Transient Response

Transient response: di/dt = 0.5A/ μ S, no external load capacitance



Vout=1.8V
50% to 100% load transients at 3.3V input and Ta=25° C

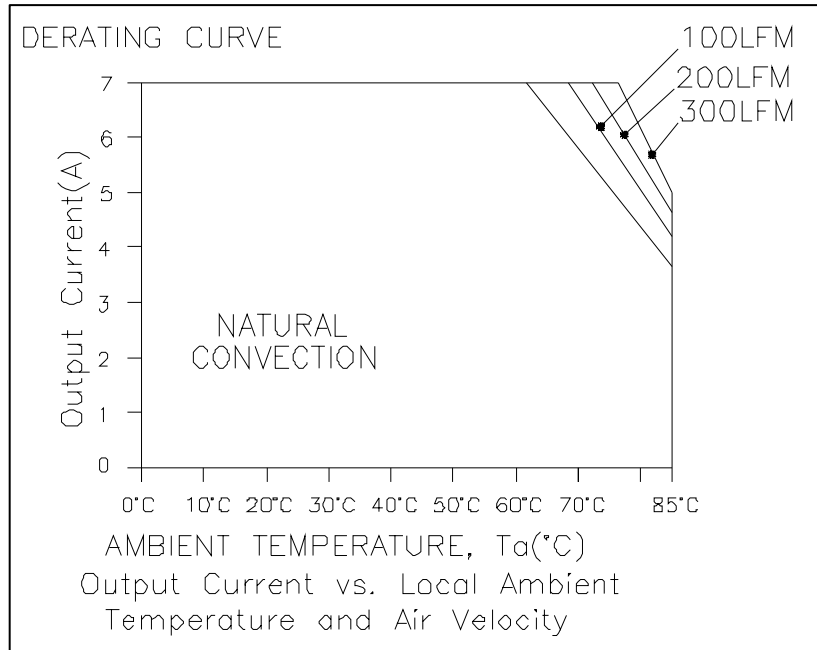


Vout=1.8V
100% to 50% load transients at 3.3V input and Ta=25° C

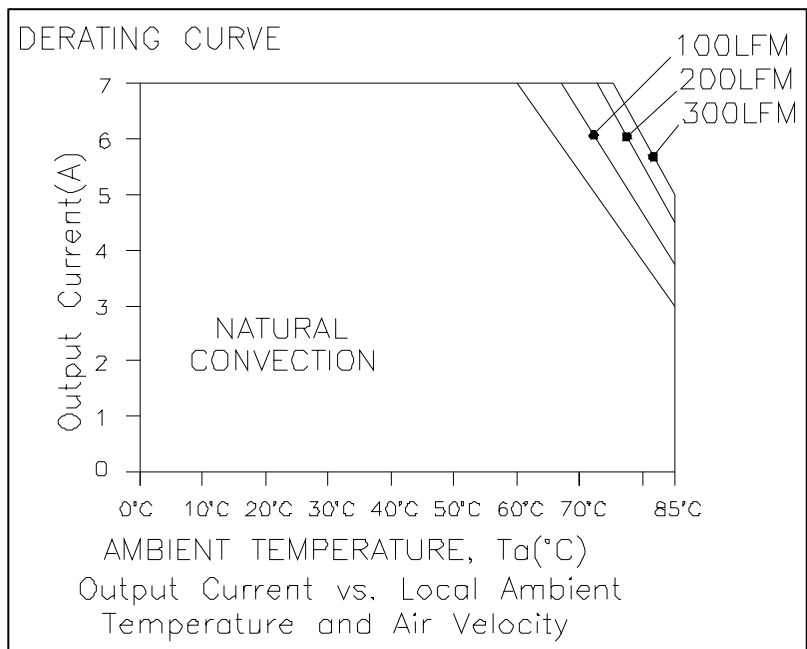
BP03x7AH-07C

Thermal Considerations

S7AH-07C



V7AH-07C

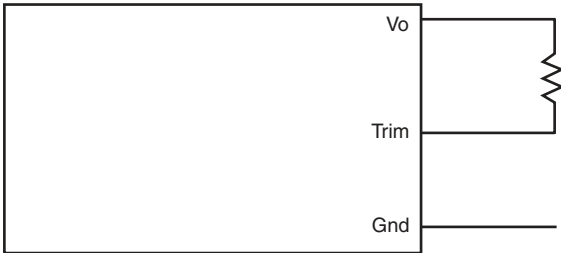


NON-ISOLATED DC/DC CONVERTERS

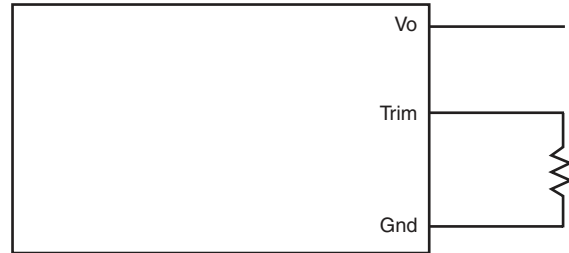
3.3V Input / 0.9V – 2.5V Output / 7A

Output Voltage Set-Point Adjustment

Trim Down Test Circuit



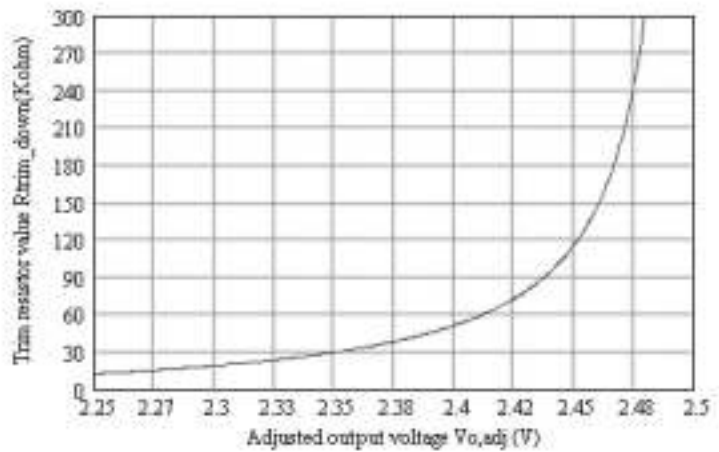
Trim Up Test Circuit



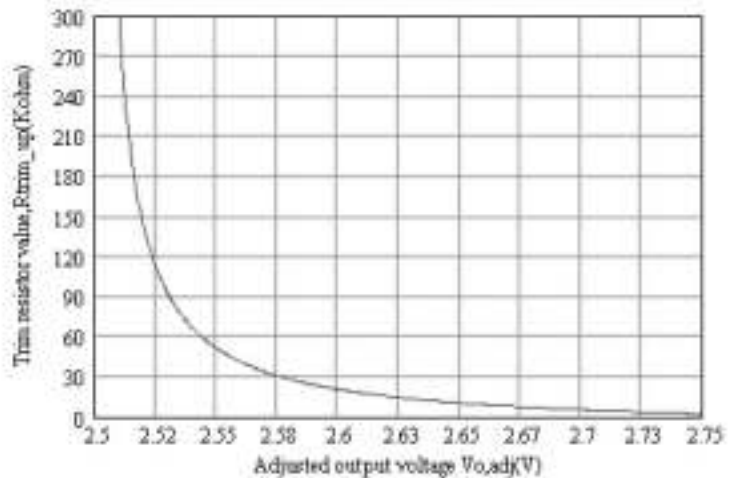
Output Voltage Set-Point Adjustment

x7AH-07C250 Trim Resistor Calculation

$$R_{\text{trim down}} = \left(\frac{6.4943}{V_o - V_{o, \text{adj}}} - 13.83 \right) \text{ Kohm}$$



$$R_{\text{trim up}} = \left(\frac{3.064}{V_{o, \text{adj}} - V_o} - 10 \right) \text{ Kohm}$$

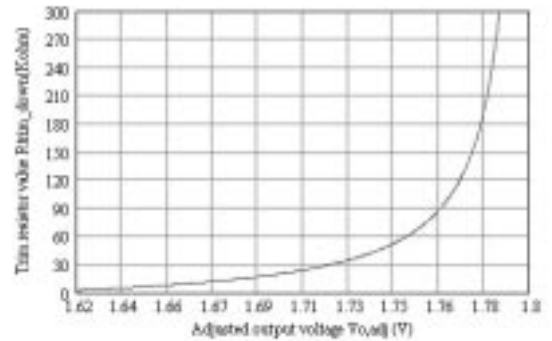


BP03x7AH-07C

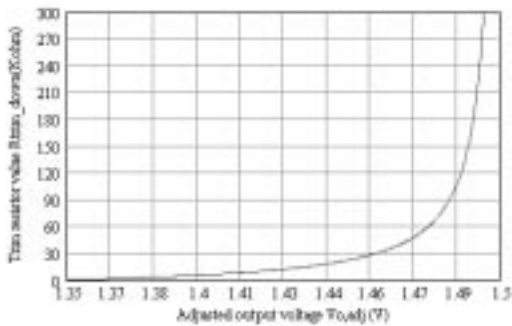
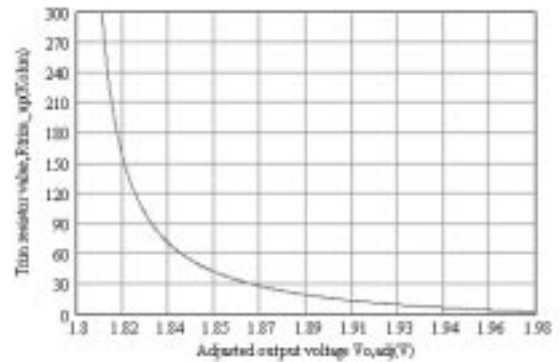
Output Voltage Set-Point Adjustment

x7AH-07C180 Trim Resistor Calculation

$$R_{\text{trim down}} = \left(\frac{3.8488}{V_o - V_{o, \text{adj}}} - 18.83 \right) \text{ Kohm}$$

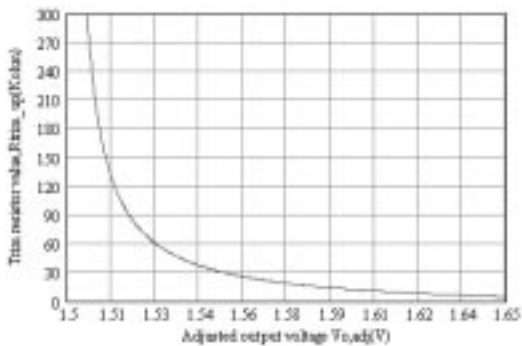


$$R_{\text{trim up}} = \left(\frac{3.064}{V_{o, \text{adj}} - V_o} - 15 \right) \text{ Kohm}$$



x7AH-07C150 Trim Resistor Calculation

$$R_{\text{trim down}} = \left(\frac{1.7874}{V_o - V_{o, \text{adj}}} - 11.7 \right) \text{ Kohm}$$



$$R_{\text{trim up}} = \left(\frac{2.088}{V_{o, \text{adj}} - V_o} - 9.09 \right) \text{ Kohm}$$

NON-ISOLATED DC/DC CONVERTERS

3.3V Input / 0.9V – 2.5V Output / 7A

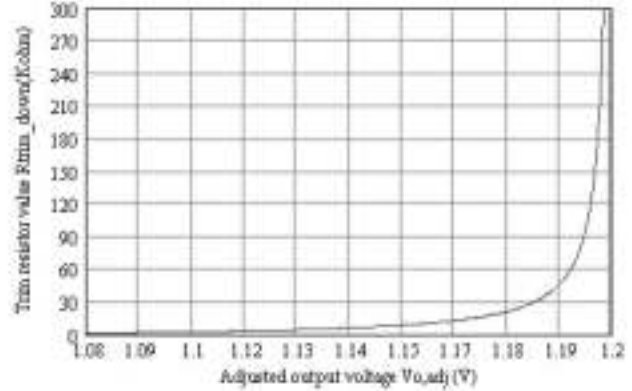


BP03x7AH-07C

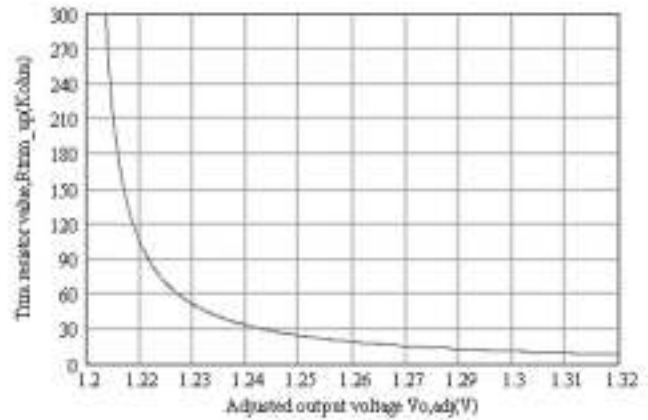
Output Voltage Set-Point Adjustment

x7AH-07C120 Trim Resistor Calculation

$$R_{\text{trim down}} = \left(\frac{0.622}{V_{o, \text{adj}} - V_o} - 4.15 \right) \text{ Kohm}$$

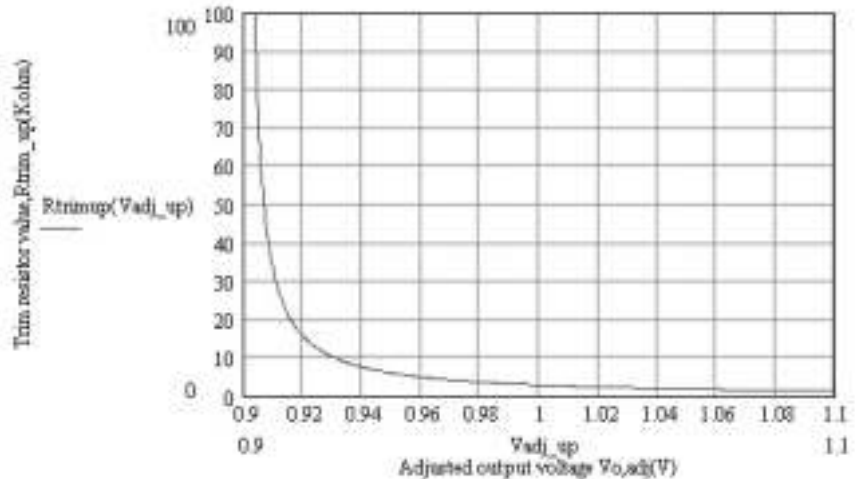


$$R_{\text{trim up}} = \left(\frac{1.232}{V_{o, \text{adj}} - V_o} - 2.61 \right) \text{ Kohm}$$



x7AH-07C090 Trim Resistor Calculation

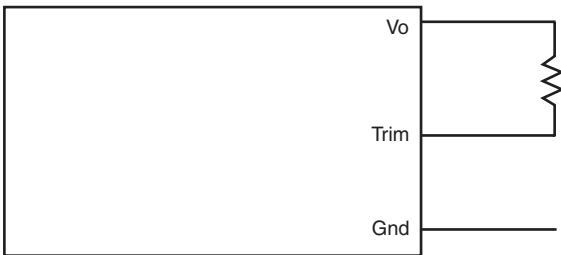
$$R_{\text{trim up}} = \left(\frac{0.3064}{V_{o, \text{adj}} - V_o} - 0.178 \right) \text{ Kohm}$$



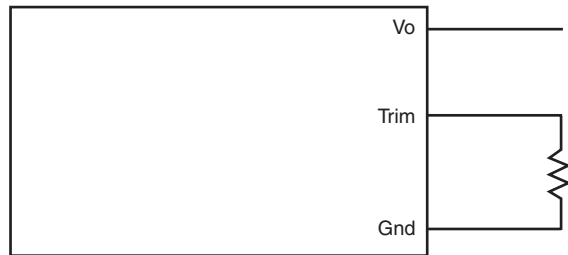
BP03x7AH-07C

Output Voltage Set-Point Adjustment

Trim Down Test Circuit



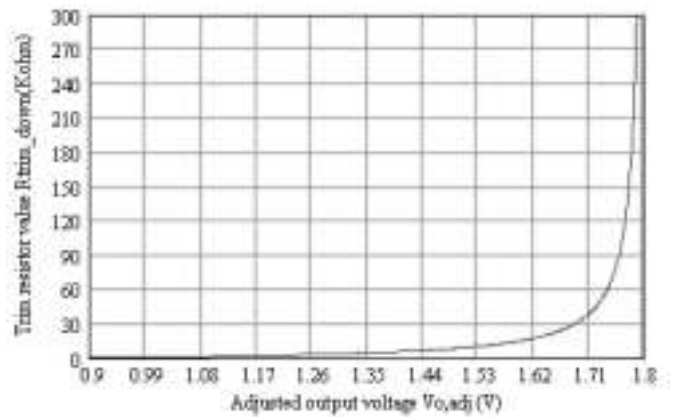
Trim Up Test Circuit



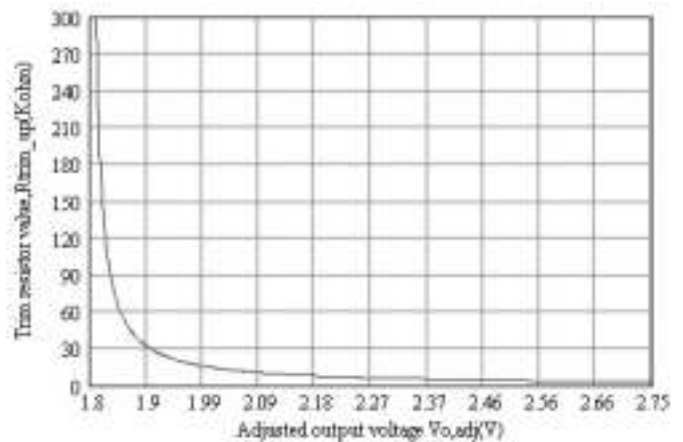
Output Voltage Set-Point Adjustment

x7AH-07C1A0 Trim Resistor Calculation

$$R_{\text{trim down}} = \left(\frac{3.8488}{V_o - V_{o, \text{adj}}} - 4.091 \right) \text{ Kohm}$$



$$R_{\text{trim up}} = \left(\frac{3.064}{V_{o, \text{adj}} - V_o} - 0.261 \right) \text{ Kohm}$$



NON-ISOLATED DC/DC CONVERTERS

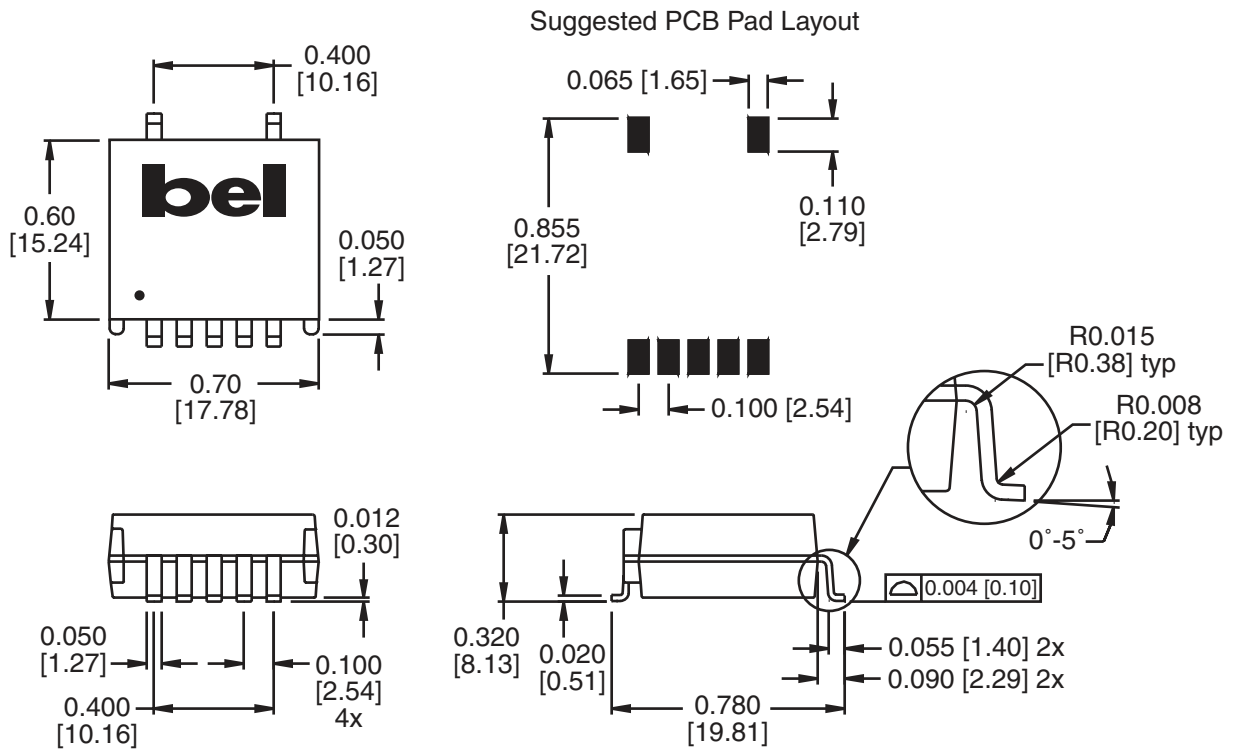
3.3V Input / 0.9V – 2.5V Output / 7A



BP03x7AH-07C

Mechanical

S7AH-07C



Dimensions are in inches [millimeters].
Standard dimension tolerance is ± 0.005 [0.13] unless otherwise noted.

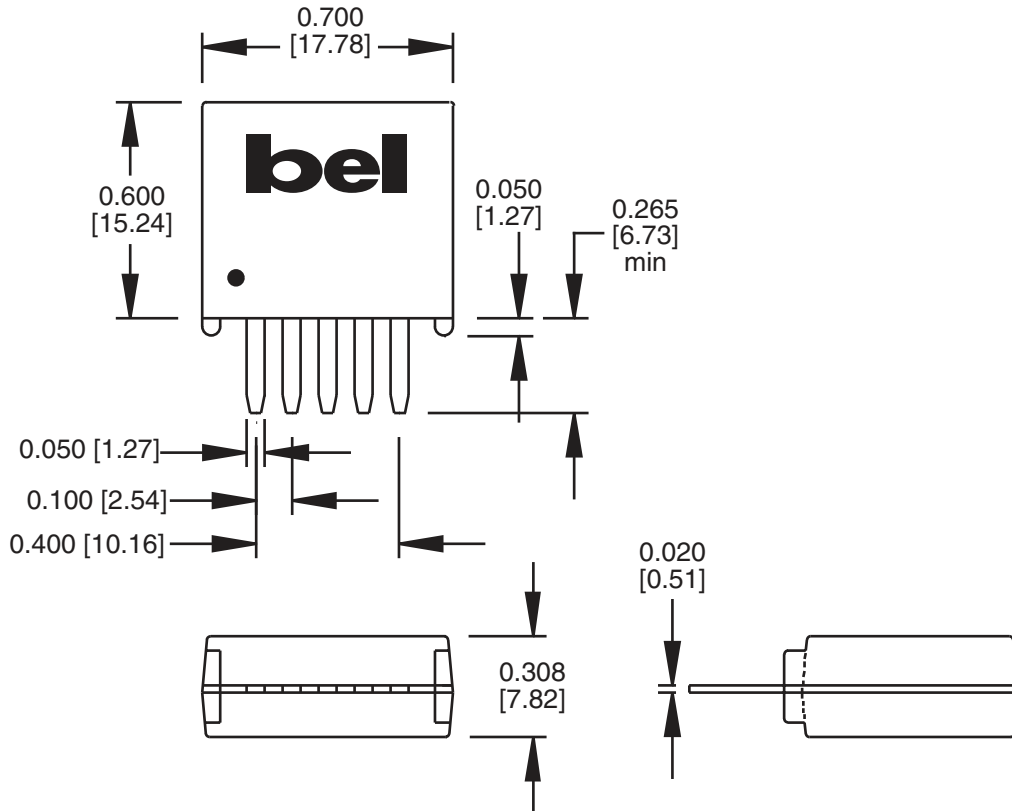
Pin	Function
1	Remote On/Off
2	+Vin
3	Ground
4	+Vo
5	Trim
6	No Connection
7	No Connection



BP03x7AH-07C

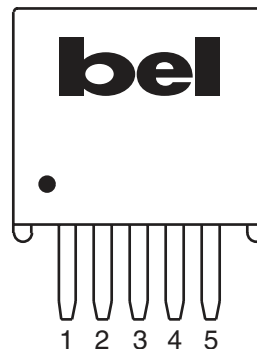
Mechanical

V7AH-07C



Dimensions are in inches [millimeters].
Standard dimension tolerance is ± 0.005 [0.13] unless otherwise noted.

Pin	Function
1	Remote On/Off
2	+Vin
3	Ground
4	+Vo
5	Trim



©2003 Bel Fuse Inc. Specifications subject to change without notice. 02.03

CORPORATE

Bel Fuse Inc.
206 Van Vorst Street
Jersey City, NJ 07302
Tel 201-432-0463
Fax 201-432-9542
www.belfuse.com

FAR EAST

Bel Fuse Ltd.
8F / 8 Luk Hop Street
San Po Kong
Kowloon, Hong Kong
Tel 852-2328-5515
Fax 852-2352-3706
www.belfuse.com

EUROPE

Bel Fuse Europe Ltd.
Preston Technology Management Centre
Marsh Lane, Suite G7, Preston
Lancashire, PR1 8UD, U.K.
Tel 44-1772-556601
Fax 44-1772-888366
www.belfuse.com