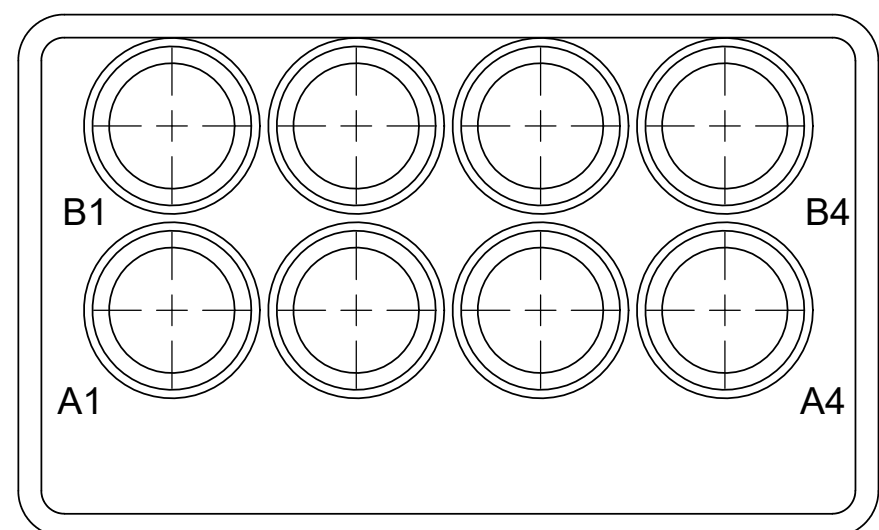
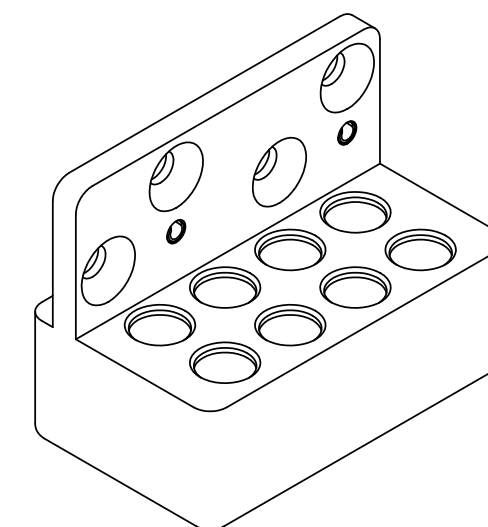
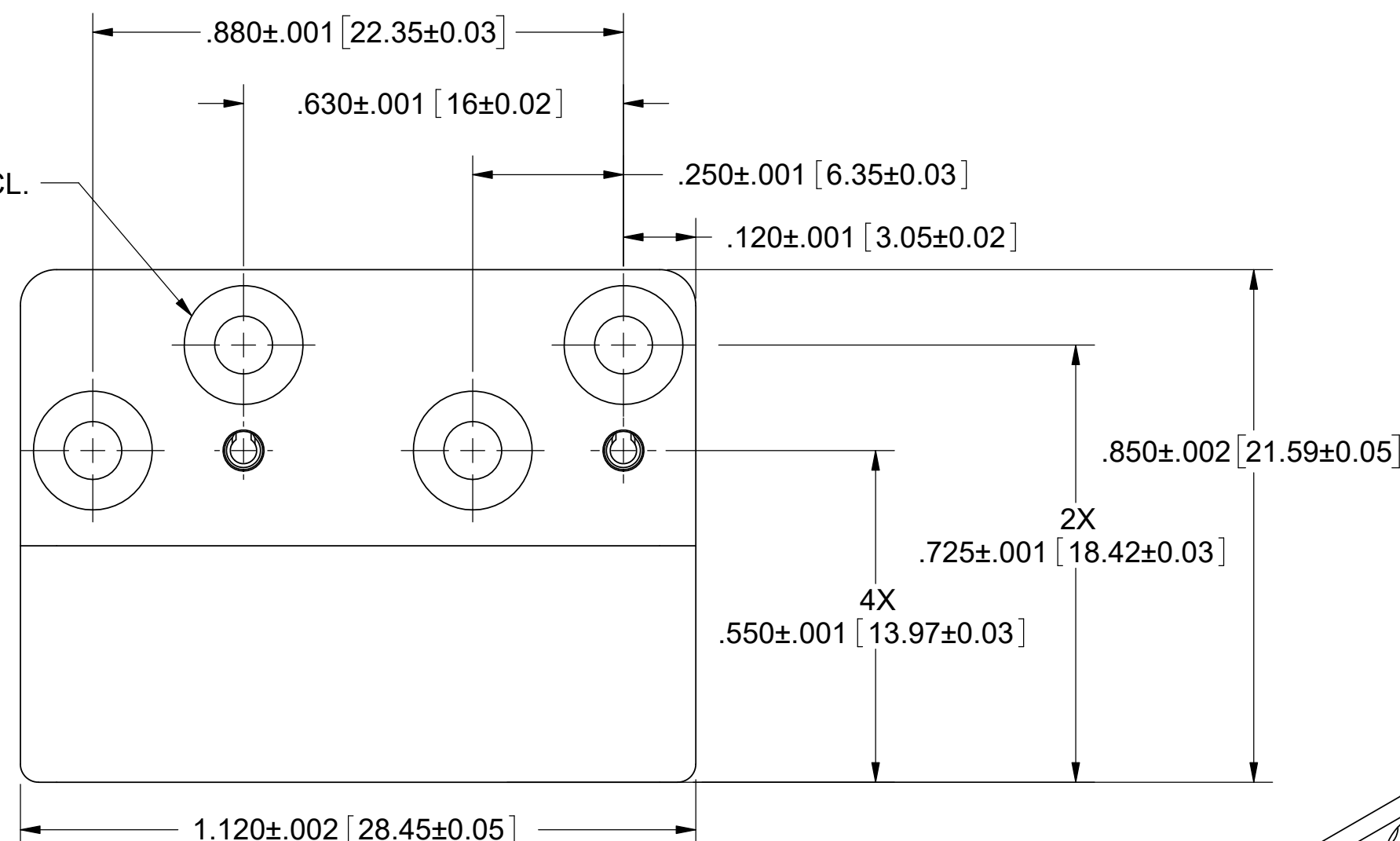
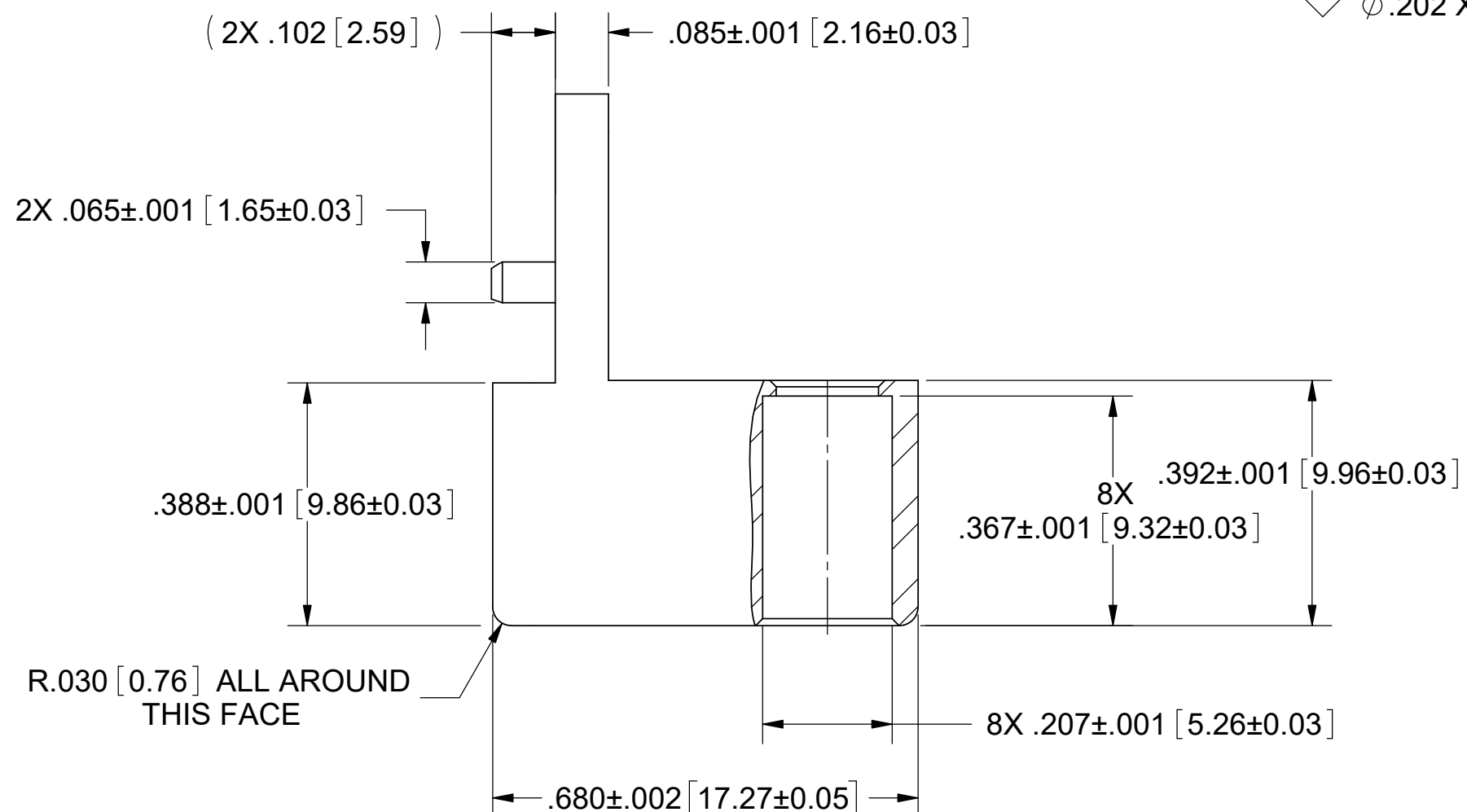
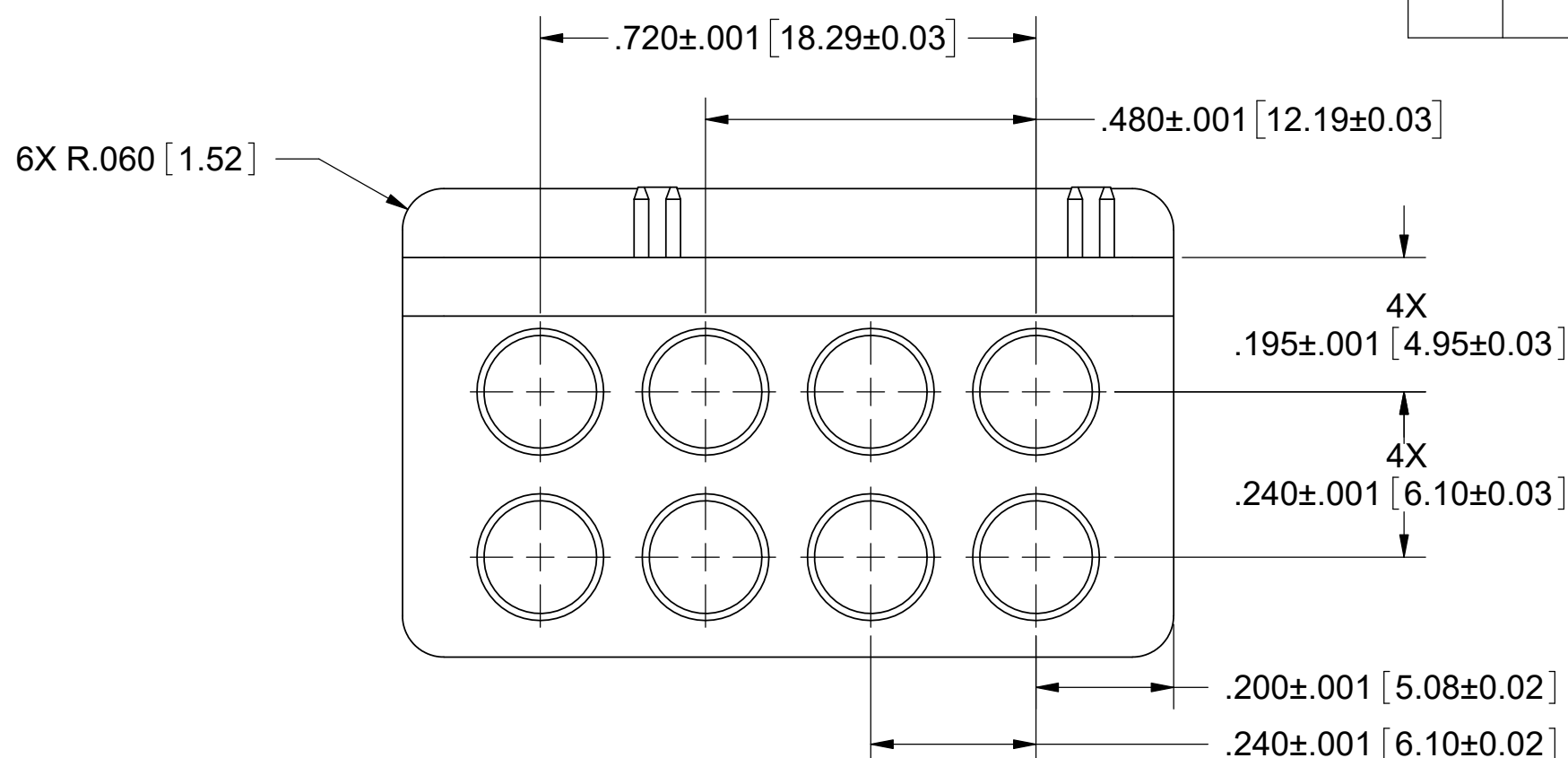


PRODUCT DATA DRAWING

REVISION HISTORY			
REV.	DESCRIPTION	DATE	APPROVED
D	DCN 48136	11/18	STW



CAVITY IDENTIFICATION



MATERIAL:
MODULE: STAINLESS STEEL PER AMS-5640, ALLOY UNS S30300, TYPE 1
SPRING PINS: STAINLESS STEEL PER ASTM A313, ALLOY UNS S30200, TYPE 302.
FINISH:
MODULE & SPRING PINS: PASSIVATED PER AMS-2700.

MATERIAL: SEE NOTES
FINISH: SEE NOTES
DO NOT SCALE DRAWING
PROPRIETARY
THE INFORMATION CONTAINED IN THIS DRAWING IS THE SOLE PROPERTY OF SV MICROWAVE, INC. ANY REPRODUCTION IN PART OR AS A WHOLE WITHOUT THE WRITTEN PERMISSION OF SV MICROWAVE, INC. IS PROHIBITED.

DIMENSIONS ARE IN INCHES
TOLERANCES:
ANGULAR: ±1°
ONE PLACE DECIMAL ±.030
TWO PLACE DECIMAL ±.010
THREE PLACE DECIMAL ±.005
INTERPRET DIMENSIONS AND TOLERANCES PER ASME Y14.5M - 1994

UNLESS OTHERWISE SPECIFIED:
1. ALL DIMENSIONS ARE AFTER PLATING.
2. BREAK CORNERS & EDGES R.005 MAX.
3. CHAMFER 1ST AND LAST THREAD.
4. SURFACE ROUGHNESS 63 PER MIL-STD-10.
5. DIA'S ON COMMON CENTERS TO BE CONCENTRIC WITHIN .005 T.I.R.
6. REMOVE ALL BURRS.

THIRD ANGLE PROJECTION

SV Microwave, Inc.[®]
2400 Centrepark West Drive, Suite 100
West Palm Beach, FL 33409

TITLE: **VITA 67.2 PLUG-IN 8 PORT MODULE**

SIZE: C CAGE CODE: 95077 DWG. NO. SF9321-60013
SCALE: 4:1 SHEET 1 OF 1