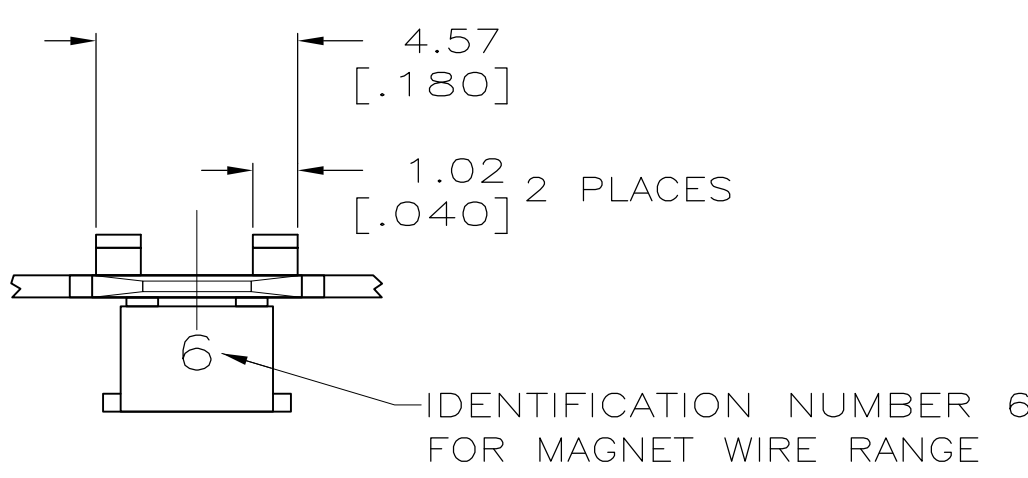
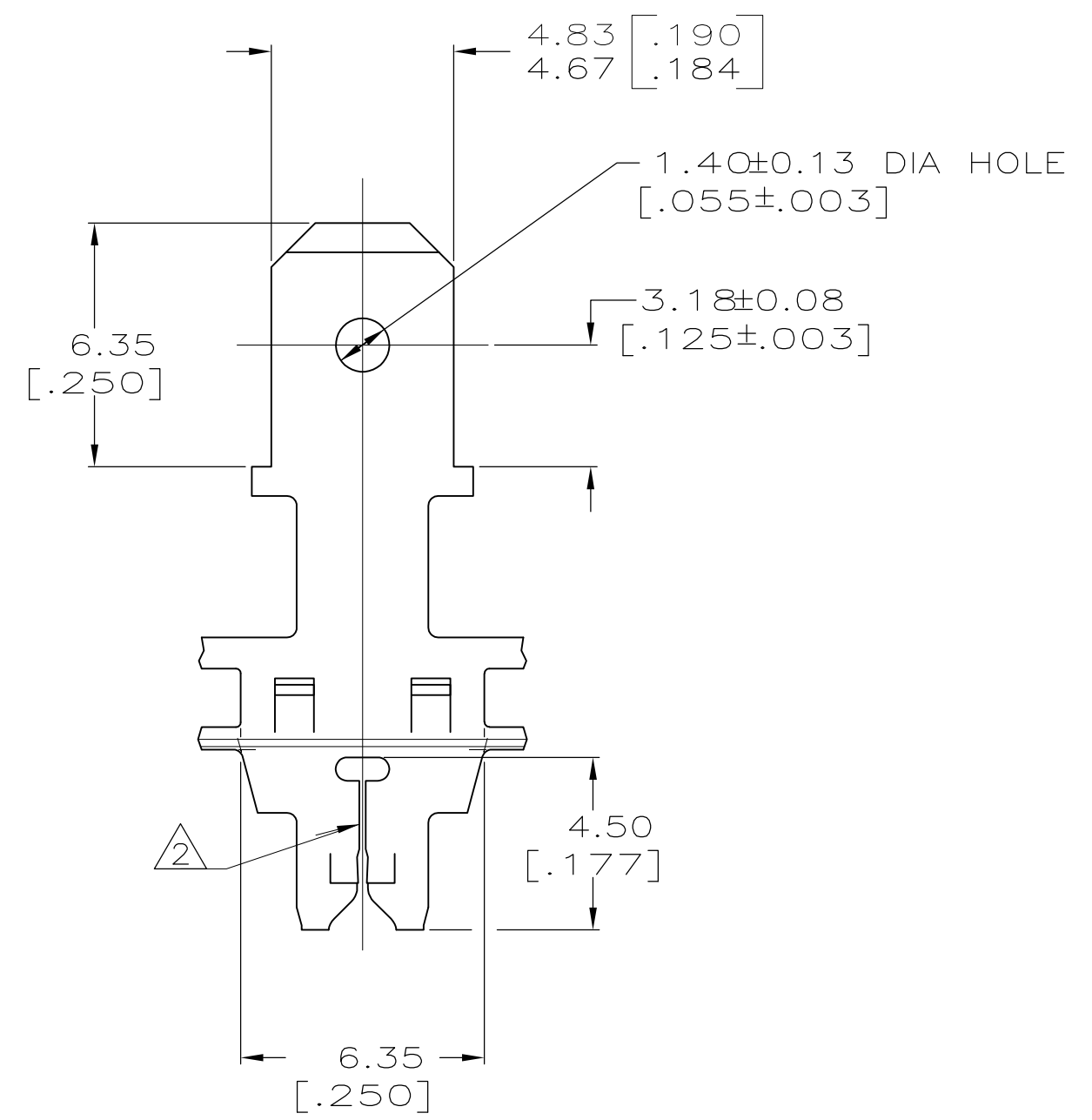
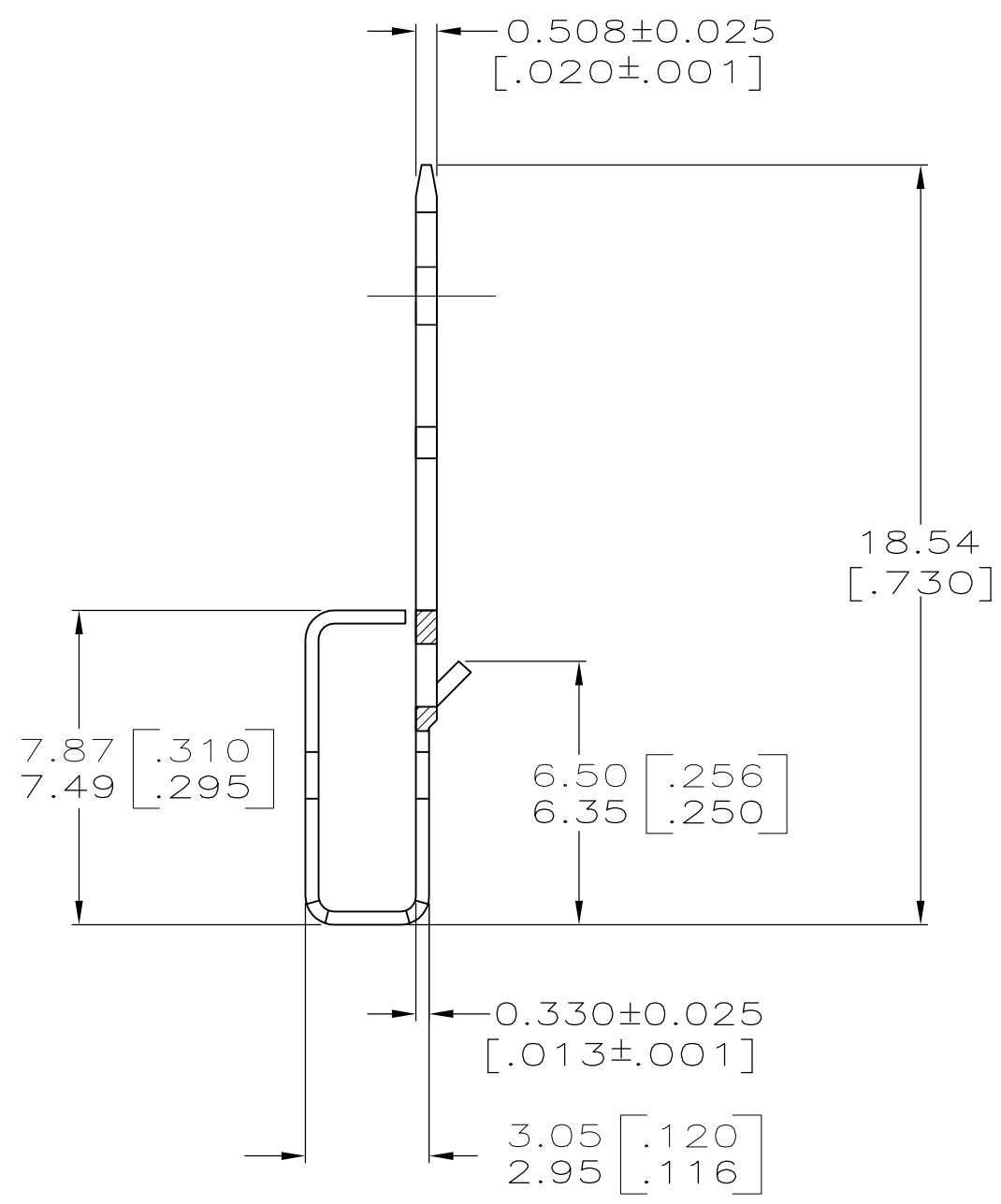
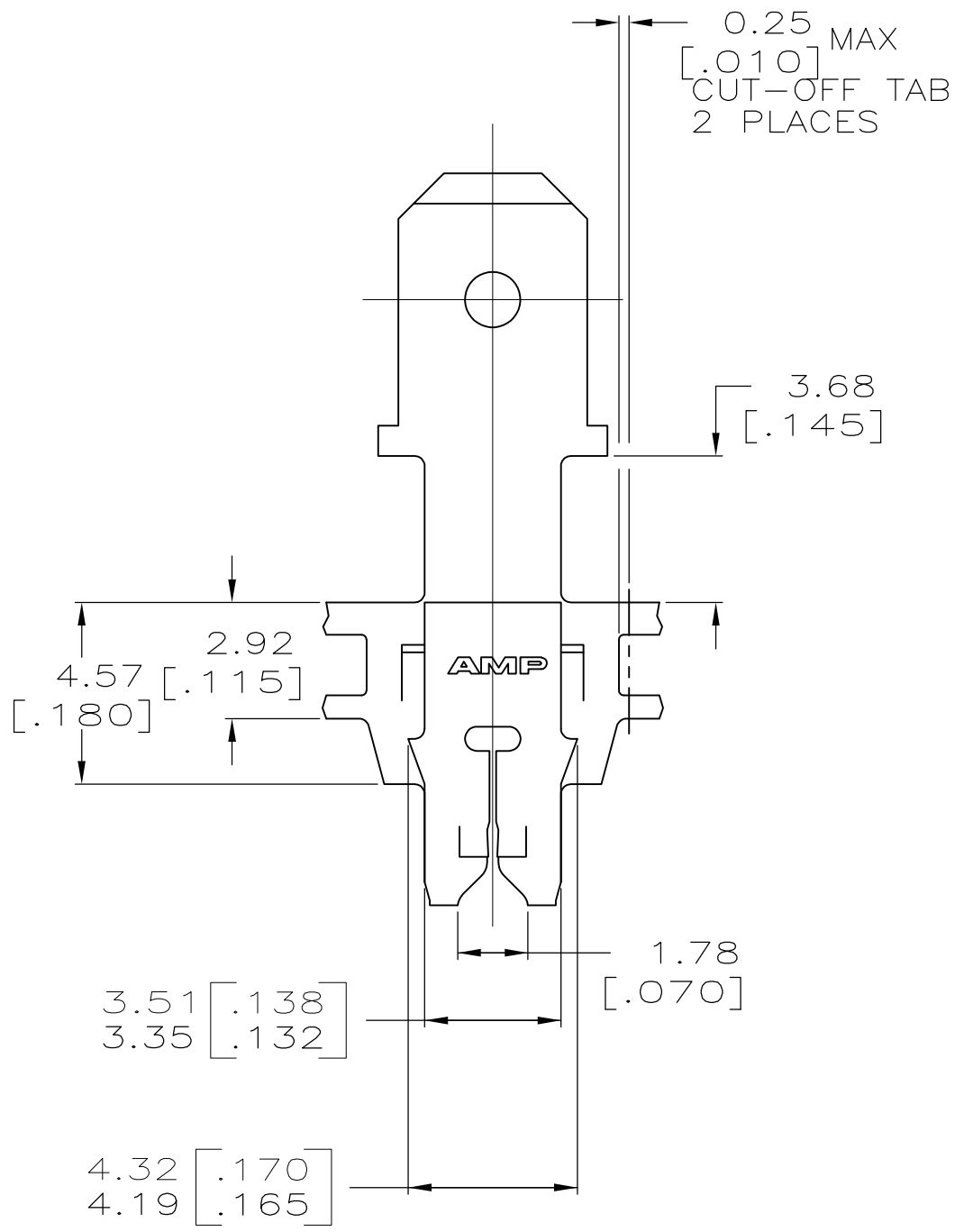


LOC		DIST		P		F		ZONE		LTR		REVISIONS	
DESCRIPTION		DATE		APPD									
AF	50									C1	ECR-15-005665	10AUG2015	BDA/PKS



1 CONTINUOUS STRIP ON REELS WITH TERMINALS LOCATED ON 8.38±0.08 [.330±.003] CENTERS.
 2 SLOT ACCEPTS 0.25-0.36mm [#30-#27] AWG COPPER MAGNET WIRE.
 SLOT ACCEPTS 0.32-0.45mm [#28-#25] AWG ALUMINUM MAGNET WIRE.
 ALUMINUM WIRE RANGE APPLIES FOR POST-TIN PLATED VERSIONS ONLY.
 2 WIRES OF THE SAME SIZE MAX PER SLOT.



63447-1

PART NO

DO NOT SCALE PRINT. UNLESS SPECIFIED DIMENSIONS IN mm [INCHES] TOLERANCES ON : 2 PLC DEC ± 0.25 [.010] 3 PLC DEC ± - ANGLES ± -	DR 14/JAN/95 MICHAEL S. FEHER		NAME
	CHK 16/JAN/95 PHILLIP M. FORTNEY		
MATERIAL 4M PRE-MILLED BRASS	APPD 16/JAN/95 NELSON E. NEFF	PRODUCT SPEC 108-2012	SIZE
FINISH 0.002032 [.000080] MIN TIN PER MIL-T-10727	APPD 16/JAN/95 TERRY L. SHUTTER	APPLICATION SPEC 114-2094	CAGE CODE 00779
THIS DRAWING IS A CONTROLLED DOCUMENT FOR AMP INCORPORATED. IT IS SUBJECT TO CHANGE AND THE CONTROLLING ENGINEERING ORGANIZATION SHOULD BE CONTACTED FOR THE LATEST REVISION.	WEIGHT -	SCALE 6:1	DRAWING NO C-63447
			SHEET 10F 1 REV. C1