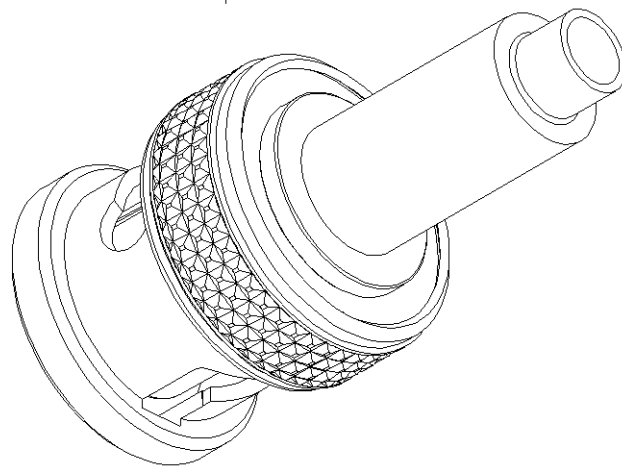
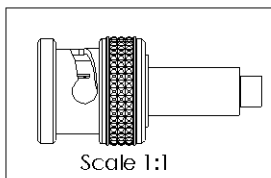
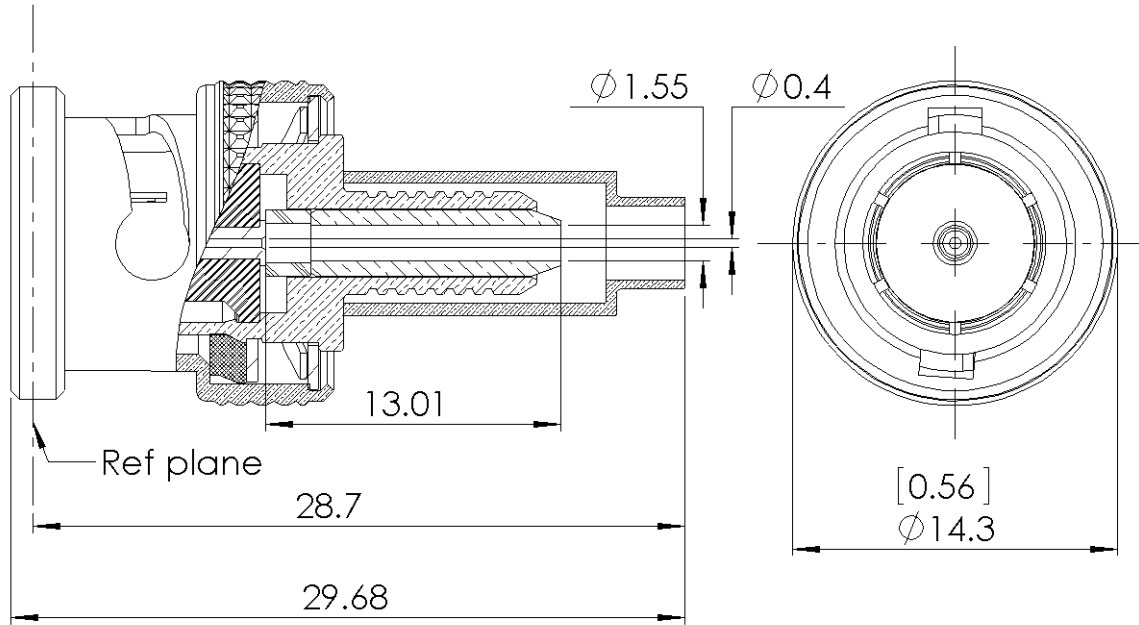
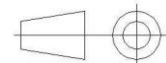


PAGE 1/3	ISSUE 03-03-17A	SERIES BNC 75 HDTV	PART NUMBER R142077742
----------	-----------------	--------------------	------------------------



All dimensions are in mm.



COMPONENTS	MATERIALS	PLATING (μm)
Body	BRASS	NPGR
Center contact	BRASS	NPGR
Outer contact	BRASS	NPGR
Insulator	PTFE	
Gasket	SILICONE RUBBER	
Others parts	BRASS	BBR
-	-	-
-	-	-

PAGE 2/3	ISSUE 03-03-17A	SERIES BNC 75 HDTV	PART NUMBER R142077742
----------	-----------------	--------------------	------------------------

PACKAGING

Standard	Unit	Other
100	Contact us	Contact us

ELECTRICAL CHARACTERISTICS

Impedance		75	Ω
Frequency		DC-12	GHz
VSWR	1.05	+	0.0350 x F(GHz) Maxi
Insertion loss		0.1	√F(GHz) dB Maxi
RF leakage	- (AD	- F(GHz)) dB Maxi
Voltage rating		500	Veff Maxi
Dielectric withstanding voltage		1500	Veff mini
Insulation resistance		5000	MΩ mini

MECHANICAL CHARACTERISTICS

Center contact retention			
Axial force – Mating End		27	N mini
Axial force – Opposite end		27	N mini
Torque		NA	N.cm mini
Recommended torque			
Mating		NA	N.cm
Panel nut		NA	N.cm
Clamp nut		NA	N.cm
A/F clamp nut		0.0000	mm
Mating life	1000		Cycles mini
Weight	9.3400		g

ENVIRONMENTAL

Operating temperature	-65/+165	°C
Hermetic seal	NA	Atm.cm3/s
Panel leakage	NA	

SPECIFICATION

CABLE ASSEMBLY

Stripping	a	b	c	d	e	f
mm	4	10	18.5	0	14.5	0

Assembly instruction: **Crimp 03**

Recommended cable(s)

Characteristics indicated on this data sheet are those that can be achieved with the highest performance cable. Intrinsic limitations of the cable may diminish the performance of the assembly

Cable retention

- pull off	60	N mini
- torque	NA	N.cm

TOOLING

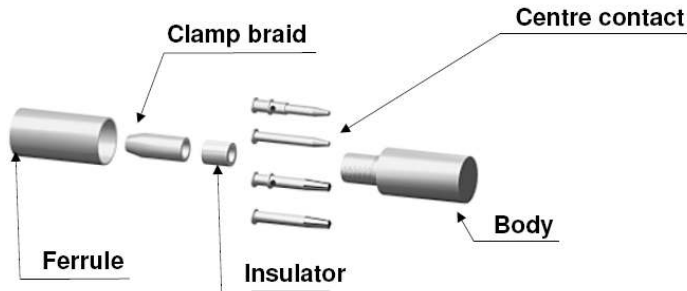
Part Number	Description	Hexagon
R282233000	CRIMPING TOOL	Hex. 5.41 / Square 1.10

OTHER CHARACTERISTICS

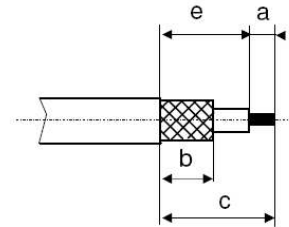
Data speed rate up to 12.5Gb/s

PAGE 3/3	ISSUE 03-03-17A	SERIES BNC 75 HDTV	PART NUMBER R142077742
----------	-----------------	--------------------	------------------------

COMPONENTS



STRIPPING DIMENSIONS



- 1**

Slide the ferrule onto the cable.
Strip the cable.
- 2**

Fan the braid.
Slide the braid clamp and the insulator between the dielectric and the braid.
Slide the insulator between the dielectric and the braid.
- 3**

Slide on the centre contact until it bottoms against the cable dielectric.
Solder or crimp the centre contact with crimping tool (see connector TDS).
Clean solder area if necessary.
- 4**

Slide cable into body until it bottoms against insulator.
- 5**

Slide the ferrule over the braid.
- 6**

Crimp the ferrule with crimping tool (see connector TDS).
Cut the excess of braid if necessary.