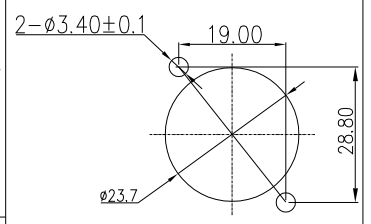
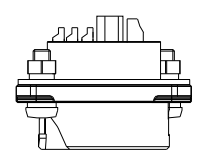
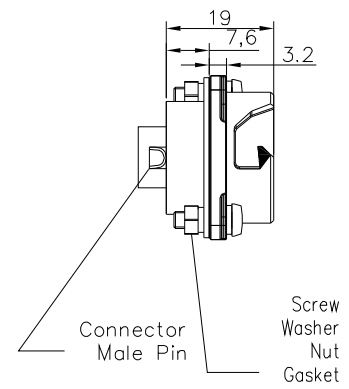
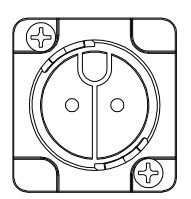


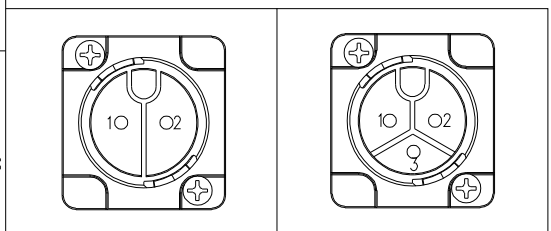
REV.	ECN NO.	DESCRIPTION	SIGN	DATE
C1	N/A	INITIAL DRAWING	Liu	2020/05/19



RECOMMENDED PANEL Cut-Out



22XXX536-01
Pin Number



2 Pin P/N: 24002536-01
3 Pin P/N: 24003536-01

Pin Assignments Front View

UNIT:mm		DESCRIPTION Large Series Push Lock Female socket With Male Pin
TOLERANCE	.X ±0.25 .XX ±0.15 .XXX ±0.05 ANGLES ±1°	SCALE: 1:1 SHEET 1 OF 1
REV. C1	SIZE A4	* :Inspection Item

CHOGORI

PART NO	24XXX536-01	DRAWN BY	Liu	DATE	2020/05/19
DWG NO		CHECKED BY	Mo	DATE	2020/05/19
CUSTOMER		APPROVED BY	Adley	DATE	2020/05/19

- Specification:
- 1.Operation Temperature: -45°C~105°C.
 - 2.Insulation Resistance:100MΩ at DC500V.
 - 3.Contact Resistance:<10mΩ.
 - 4.Withstand Voltage: 2000V AC
 - 5.Operating Current:20A
 - 6.Operating Voltage:AC 300V
 - 7.Waterproof Rate:IP67 (Mated)
 - 8.Housing:Nylon, Black
 - 9.Male Pin:Copper Alloy, Gold Plated
 - 10.Gasket:Silicon Gray
 - 11.RoHS Compliant.
 - 12.Mating Cap P/N:806-00058-00

THIS INFORMATION IS CONFIDENTIAL AND IS DISCLOSED TO YOU ON CONDITION THAT NO FURTHER DISCLOSURE IS MADE BY YOU TO OTHER THAN CHOGORI PERSONNEL WITHOUT AUTHORIZATION FROM CHOGORI CORP.