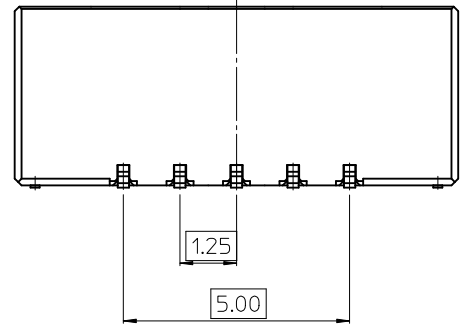
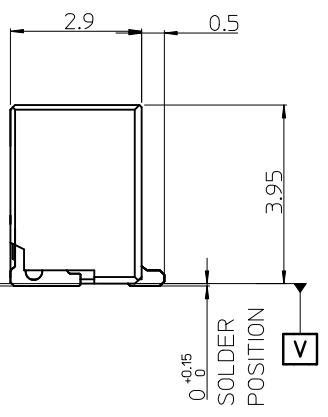
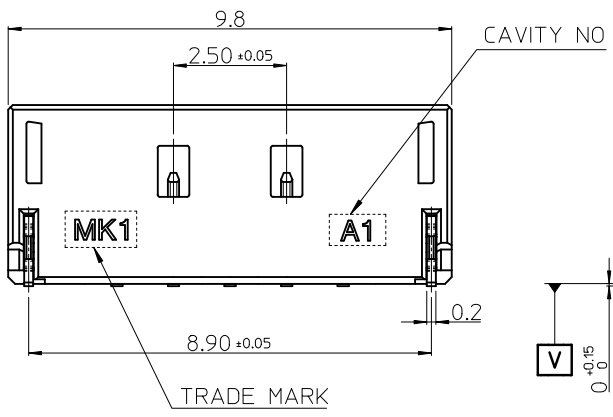
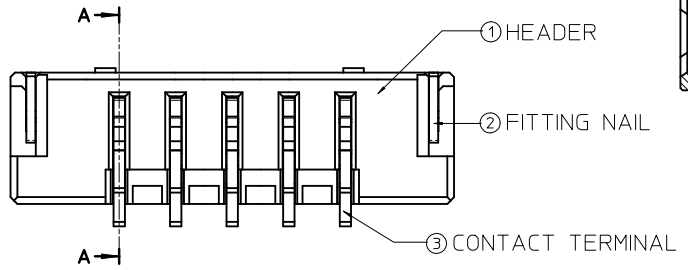
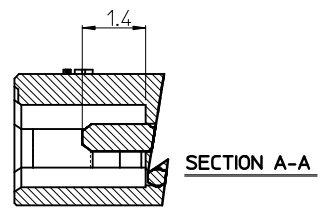


RECOMMENDED PCB LAY OUT
[GENERAL TOLERANCE ±0.05]



NOTES.

- MATED WITH : 104131-0500
- MATERIALS.
 - HEADER : LCP E130I, GLASS FILLED, UL 94V-0 HALOGEN FREE, COLOR OF NATURAL
 - CONTACT TERMINAL : PHOSPHOR BRONZE, 0.25mm Thickness
 - FITTING NAIL : PHOSPHOR BRONZE, 0.2mm Thickness
- FINISHES.
 - CONTACT TERMINAL : PURE-TIN PLATING ON OVERALL. THICKNESS : 3.0µm~5.0µm UNDER PLATING Ni OVERALL. THICKNESS : 1.25µm~3.75µm
 - FITTING NAIL : PURE-TIN PLATING ON OVERALL. THICKNESS : 3.0µm~5.0µm UNDER PLATING Ni OVERALL. THICKNESS : 1.25µm~3.75µm
- COPLANALITY OF SOLDER TAIL (PEAK TEMP. : 260°C) BEFORE & AFTER REFLOW : 0.08MAX



RELEASED	EC NO: KOR2012-0059	2011/12/20
	DRWN: JHPARK01	2011/12/20
	CHKD: SHCHU	2011/12/20
	APPR: YUNSIKKIM	2011/12/29
REV	DESCRIPTION	
A		

QUALITY SYMBOLS	▽=0
	∇=0
	4 PLACES ± --- ± ---
	3 PLACES ± --- ± ---
	2 PLACES ± 0.15 ± ---
1 PLACE ± 0.15 ± ---	
ANGULAR ± 1 °	
DRAFT WHERE APPLICABLE MUST REMAIN WITHIN DIMENSIONS	

GENERAL TOLERANCES (UNLESS SPECIFIED)	
mm	INCH
4 PLACES ± --- ± ---	
3 PLACES ± --- ± ---	
2 PLACES ± 0.15 ± ---	
1 PLACE ± 0.15 ± ---	
ANGULAR ± 1 °	

DIMENSION STYLE	SCALE	DESIGN UNITS	THIRD ANGLE PROJECTION
MM ONLY	9/1	METRIC	
DRAWN BY	DATE	TITLE	
JHPARK01	2011/12/20	1.25MM W-T-B CONN.5P HEADER ASS'Y	
CHECKED BY	DATE	MOLEX INCORPORATED	
SHCHU	2011/12/20		
APPROVED BY	DATE	DOCUMENT NO.	SHEET NO.
YUNSIKKIM	2011/12/29	SD-104130-003	1 OF 1
MATERIAL NO.	THIS DRAWING CONTAINS INFORMATION THAT IS PROPRIETARY TO MOLEX INCORPORATED AND SHOULD NOT BE USED WITHOUT WRITTEN PERMISSION		
1041300510			

10 9 8 7 6 5 4 3 2 1

F

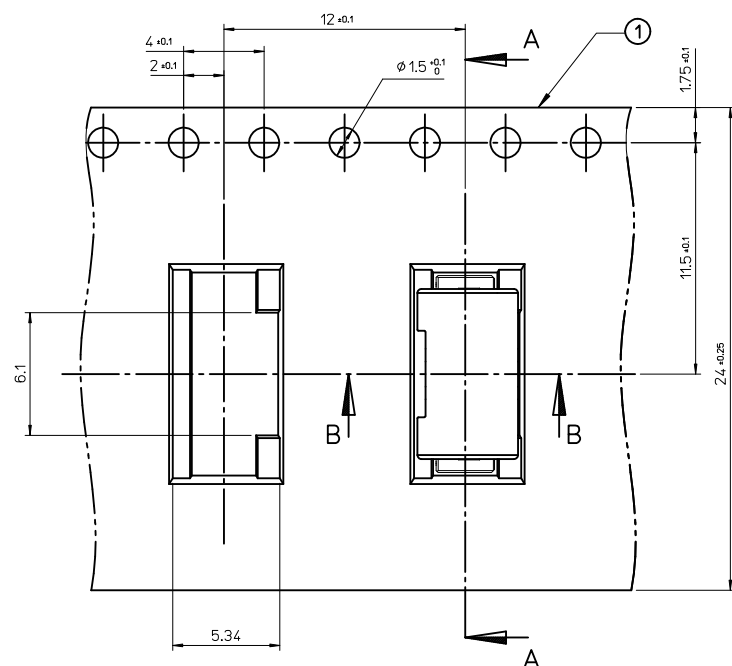
E

D

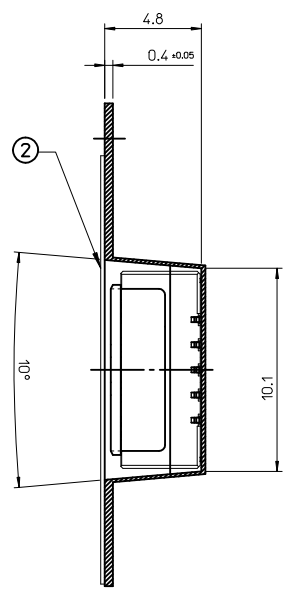
C

B

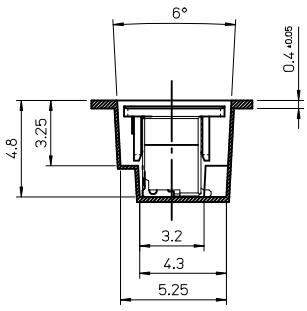
A



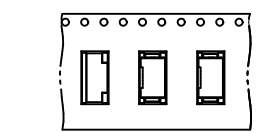
PULL OUT DIRECTION



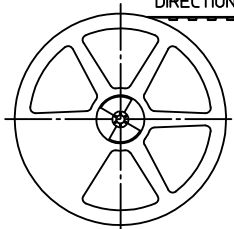
SECTION A-A



SECTION B-B



PULL OUT DIRECTION

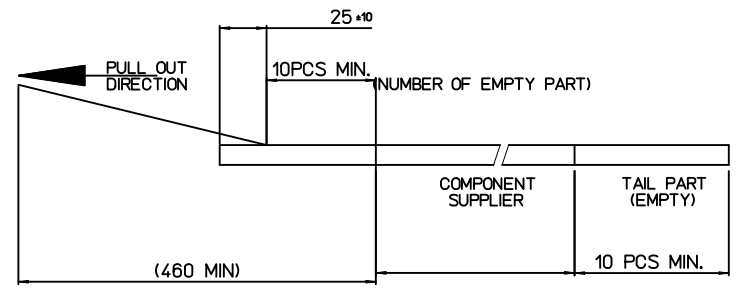


PLASTIC BOBBIN

NOTES

1. QUANTITY OF CONNECTORS : 1,500 PCS/REEL

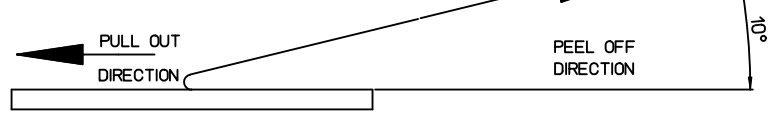
2. LEAD LENGTH



3. PEELING OFF FORCE OF COVER TAPE : 0.1N~0.59N(10.2GF~60GF)

(PEELING DIRECTION AS SHOW IN FOLLOW FIG.)

PEELING OFF SPEED : 300mm/Min.(Ref.)



4. FLASH IN ANY PORTION SHOULD BE LESS THAN 0.20mm MAX.

5. UNLESS OTHERWISE SPECIFIED INNER R0.2 MAX

6. DRAFT ANGLE 3°MAX

NO.	DESCRIPTION	MATERIAL	REMARK
3	PLASTIC BOBBIN	HI P.S	WHITE
2	COVER TAPE	PET ANTISTATIC	21.3m
1	CARRIER (EMBOSSED) TAPE	PET ANTISTATIC	

ORDER NO. 104130-0510

RELEASED
EC NO: KOR2012-0059
DRWN: JHPARK01 2011/12/20
CHKD:
APPR: YUNSIKKIM 2011/12/29

QUALITY SYMBOLS
▽=0
∇=0

GENERAL TOLERANCES (UNLESS SPECIFIED)

	mm	INCH
4 PLACES	± ---	± ---
3 PLACES	± ---	± ---
2 PLACES	± ---	± ---
1 PLACE	± 0.25	± ---

ANGULAR ± 3 °

DRAFT WHERE APPLICABLE MUST REMAIN WITHIN DIMENSIONS

DIMENSION STYLE
MM ONLY

DRAWN BY: JB. JIN
DATE: 2010/01/21

CHECKED BY: SH. CHU
DATE: 2010/01/21

APPROVED BY: YUNSIKKIM
DATE: 2011/12/29

MATERIAL NO. 1041300510

SCALE: DESIGN UNITS: METRIC

THIRD ANGLE PROJECTION

EMBOSSED PACKAGE
1.25 WIRE TO BOARD CONN.
HEADER ASS'Y-5P

MOLEX MOLEX INCORPORATED

DOCUMENT NO. SD-104130-004

SHEET NO. 1 OF 1

THIS DRAWING CONTAINS INFORMATION THAT IS PROPRIETARY TO MOLEX INCORPORATED AND SHOULD NOT BE USED WITHOUT WRITTEN PERMISSION

9 8 7 6 5 4 3 2 1