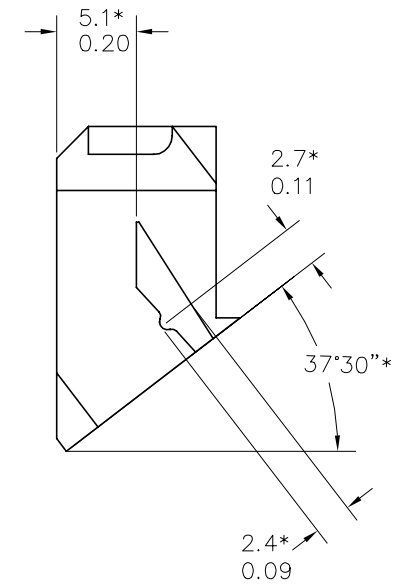
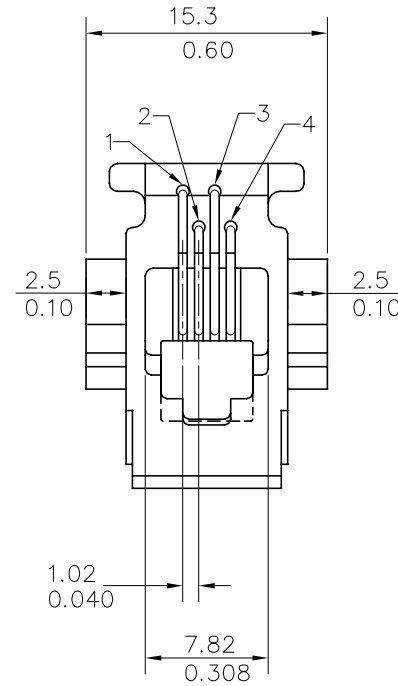
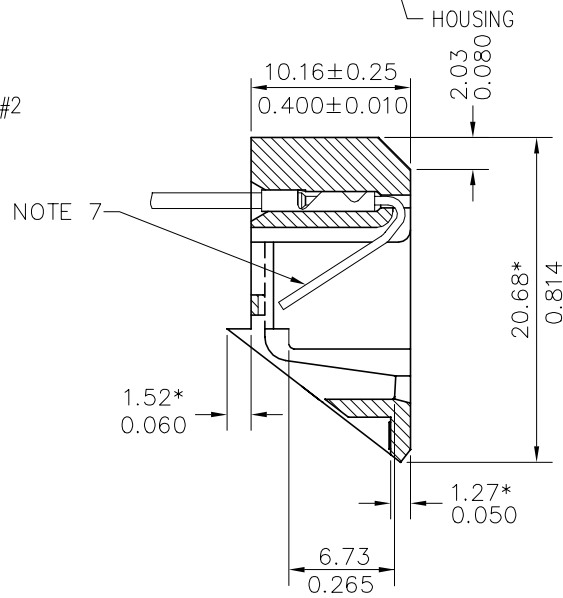
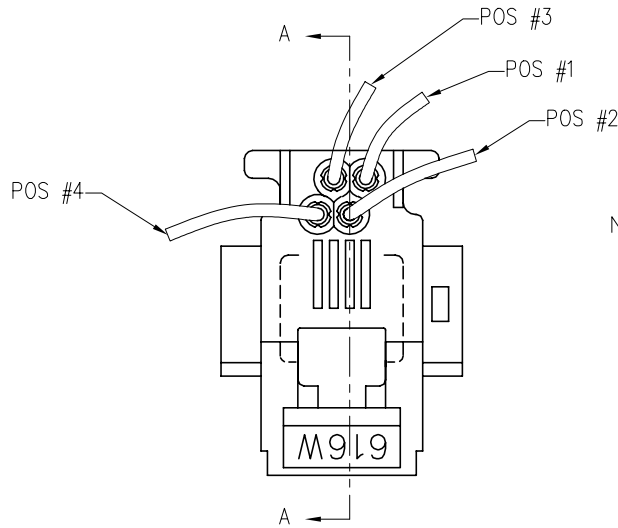
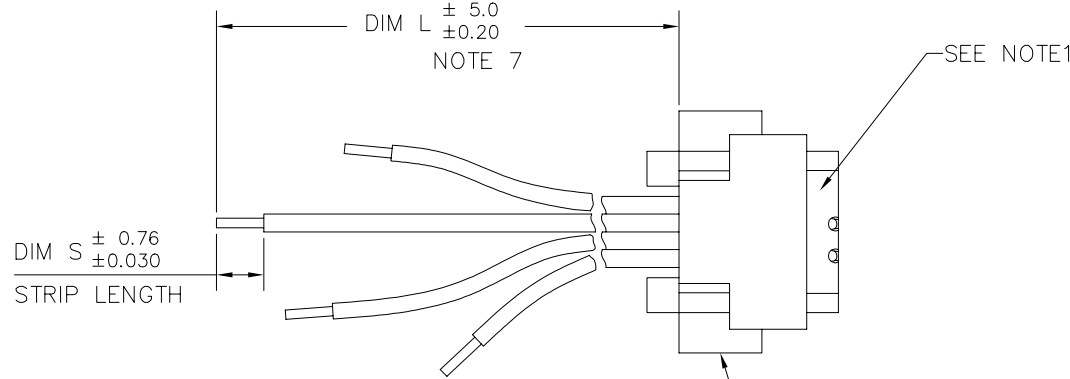


PRODUCT NO.
SEE TABLE OF SHEET 2



SECTION A-A

mat'l. code		surface		tolerance		projection		product family			
IS01302		IS01101		IS0406		mm		MOD JACK			
date		tolerances unless otherwise specified		scale		title					
V	T90289	TC	08/04/99	angle	0.X±0.3	616W MOD JACK ASSY					
W	T90356	TC	08/04/99	0°±2'	0.XX±0.15	WITH STRIPPED ENDS					
X	N05-0064	YS	03/04/05	0°±2'	0.XXX±0.05	scale 2.0					
Y	N08-0097	SH MM	09/25/08	dr	T.CHIEN	09/07/93	dwg no		sheet 1 of 2	size	
AA	ELX-N-010668	SH MM	3/14/12	engr	T.CHIEN	09/07/93	76361		A4		
				chr	J.TSAO	09/08/93	type		Product Customer Drawing		
				appd	J.TSAO	09/08/93					
sheet index	revision	AA	AA								
	sheet	1	2								

PRODUCT NO.	POS. NO.	WIRE COLOR	DIM L	WIRE STYLE	HOUSING MATERIAL	STRIP LENGTH DIM S	SPLICE FINISH	GOLDED WIRE	REMARK
76361-010 76361-010LF	1 2 3 4	RED WHITE GREEN BLACK	78.00/3.071 190.00/7.480 190.00/7.480 78.00/3.071	E	ABS UL94V-0	3.00/0.118	UNPLATED	5u" Au + high performance lubricant ⑩	FOR 76361-010LF STRIPPED END MUST BE SOLDER DIPPED WITH PURE TIN
76361-014 76361-014LF	1 2 3 4	RED WHITE GREEN BLACK	45.00/1.771 180.00/7.087 180.00/7.087 45.00/1.771	B	ABS UL94V-0 GRAY	3.00/0.118	UNPLATED	5u" Au + high performance lubricant ⑩	
76361-015 76361-015LF	1 2 3 4	RED WHITE GREEN BLACK	40.00/1.575 180.00/7.087 180.00/7.087 40.00/1.575	B	ABS UL94V-0 GRAY	3.00/0.118	UNPLATED	5u" Au + high performance lubricant ⑩	
76361-031 76361-031LF	1 2 3 4	RED WHITE GREEN BLACK	64.00/2.520 218.00/8.590 218.00/8.590 64.00/2.520	B	ABS UL94V-0 GRAY	4.00/0.157	UNPLATED	5u" Au + high performance lubricant ⑩	

NOTES:

- 1. MAT'L HOUSING: SEE TABLE.
- 2. MAT'L GOLD WIRE: PHOSPHOR BRONZE ALLOY UNS C51000.

3. INSULATED WIRE:

STYLE A: 27 AWG. 7 STRANDS OF TINNED COPPER WIRE, PVC INSULATION.

STYLE B: 27 AWG. 7 STRANDS OF TINNED COPPER WIRE, TOP COATED WITH TIN PVC INSULATION.

STYLE C: 26 AWG. 7 STRANDS OF TINNED COPPER WIRE, TOP COATED WITH TIN PVC INSULATION.

STYLE D: 26 AWG. 7 STRANDS OF TINNED COPPER WIRE, PVC INSULATION.

STYLE E: FLEXIBLE WIRE. 0.08mm DIA. X 19 CONDUCTOR BARE COPPER WIRE. UNPLATED IN SOLD STRAND. PVC INSULATION.

- 4. FOR FUNCTIONAL MECHANICAL AND VISUAL REQUIREMENTS. SEE PRODUCT SPECIFICATION BUS-12-003
- 5. TERMINAL MAT'L: BRASS ALLOY, PLAIN.
- 6. ALL DIM MARKED WITH ASTERISKS ARE REF. FOR MOUNTING.
- 7. WHEN A 4-POSITION PLUG IS INSERTED INTO THE HSG. THE CONTACT WIRE MAY NOT PROTRUDE OUT OF THE REAR WALL OF HSG.

8. IF LF P/N THE PRODUCT MEETS EUROPEAN UNION DIRECTIVES AND OTHER COUNTRY REGULATIONS AS DESCRIBED IN GS-22-008.

9. IF LF P/N THE PACKAGING MEETS GS-14-920 SPECIFICATION.

⑩ EQUIVALENT THICKNESS Au AND GXT PLATING HAVE SAME FUNCTION AND THEY ARE ALTERNATIVE BY THE CUSTOEMR .

mat'l. code		surface <input checked="" type="checkbox"/> ISO1302		tolerance <input checked="" type="checkbox"/> ISO1101 <input checked="" type="checkbox"/> ISO406		projection		product family MOD JACK		
l t r e c n n o d r		date		tolerances unless otherwise specified		mm		616W MOD JACK ASSY WITH STRIPPED ENDS		
V	T90289	TC	08/04/99	angle	0.X±0.3	scale 2.0		dwg no		
W	T90356	TC	08/04/99	0°±2'	0.XX±0.15			sheet 2 of 2		
X	N05-0064	YS	03/04/05		0.XXX±0.05			size		
Y	N08-0097	SH MM	09/25/08	dr	T.CHIEN	09/07/93			76361	
AA	ELX-N-010668	SH MM	3/14/12	enr	T.CHIEN	09/07/93			A4	
				chr	J.TSAO	09/08/93			type	
				appd	J.TSAO	09/08/93	Product Customer Drawing			
sheet index	revision sheet									