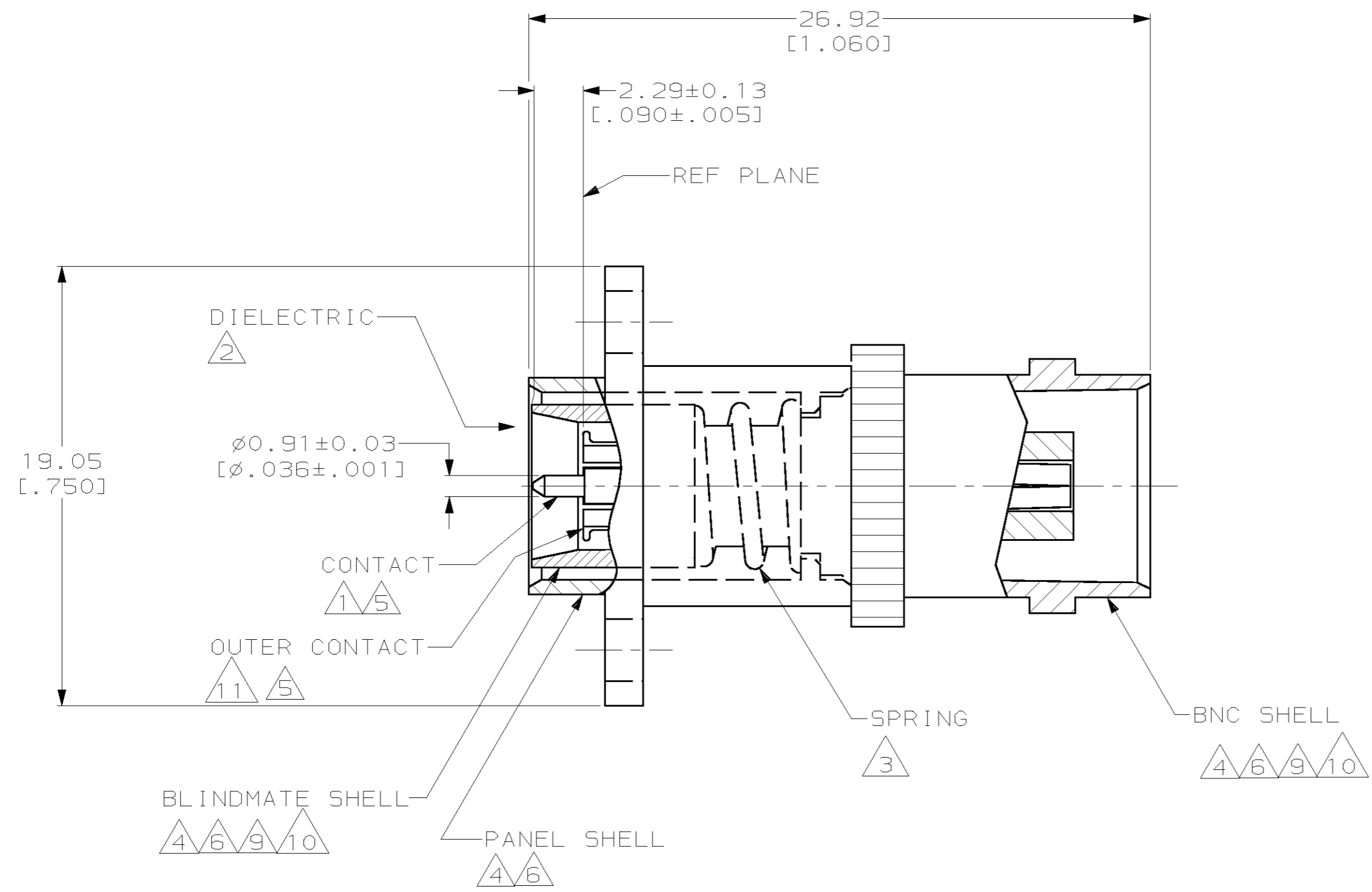
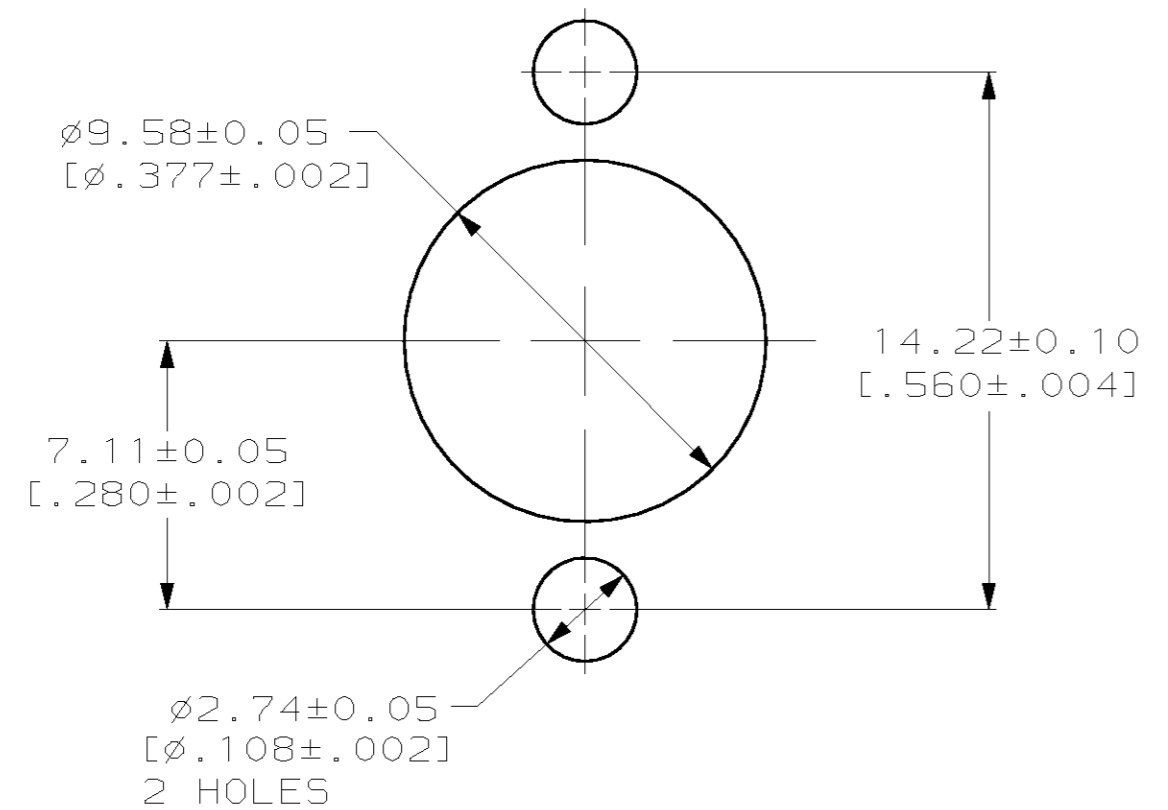


THIS DRAWING IS UNPUBLISHED. RELEASED FOR PUBLICATION
 BY AMP INCORPORATED, ALL RIGHTS RESERVED.

LOC	DIST	REVISIONS					
		P	LTR	DESCRIPTION	DATE	DWN	APVD
AJ	16	B		REV PER ECN 0514-0177-02	25OCT02	GV	JH



- 1 BERYLLIUM COPPER PER ASTM-B-196
- 2 PTFE PER ASTM-D-1710
- 3 STEEL WIRE PER QQ-W-470
- 4 BRASS PER ASTM-B-16
- 5 GOLD PL PER MIL-G-45204
- 6 NICKEL PL PER QQ-N-290
- 7 .190 MAX PANEL THICKNESS
- 8 .060 MAX FLOAT PERMITTED DUE TO INTERNAL SPRING
- 9 STAINLESS STEEL PER ASTM-A-582.
- 10 PASSIVATED PER QQ-P-35.
- 11 BOILLAT B05 PER UNS 53800



RECOMMENDED MOUNTING HOLES

9	10	448435-2
4	6	448435-1
SHELL MATERIAL/FINISH		PART NUMBER

THIS DRAWING IS A CONTROLLED DOCUMENT.		DWN M. O'BRINE 31MAY00	AMP Incorporated Harrisburg, PA 17105-3608	
DIMENSIONS: mm [INCHES]		CHK J. HAVENER 31MAY00	NAME ADAPTER, PLUG, FLOATING, 3.5mm BLIND MATE TO JACK, BNC	
TOLERANCES UNLESS OTHERWISE SPECIFIED:		APVD J. HAVENER 31MAY00	SIZE CAGE CODE DRAWING NO RESTRICTED TO	
0 PLC ±-	1 PLC ±-	PRODUCT SPEC -	A2 00779 C- 448435 -	
2 PLC ±-	3 PLC ±0.20 [.008]	APPLICATION SPEC -	SCALE 5:1 SHEET 1 OF 1 REV B	
4 PLC ±-	ANGLES ±-	WEIGHT -	CUSTOMER DRAWING	
MATERIAL	FINISH -			
THRU 4, 9, 11	6, 10			