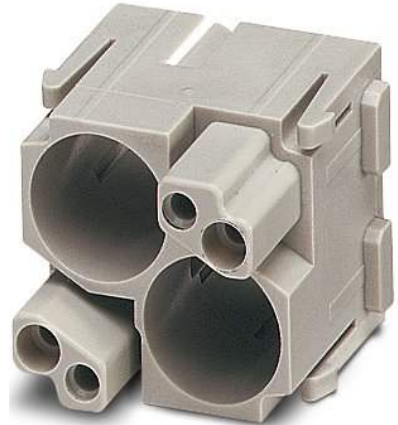


## HC-M-EMV-MOD-BU


Order No.: 1678570



<http://eshop.phoenixcontact.de/phoenix/treeViewClick.do?UID=1678570>

HEAVYCON contact insert module, series M EMV (EMC), female, 2-pos., for HC-M-EMV male contacts

### Commercial data

GTIN (EAN)	 4 017918 167707
sales group	D042
Pack	2 pcs.
Customs tariff	85369010
Catalog page information	Page 460 (PC-2009)

### Product notes

WEEE/RoHS-compliant since:  
06/27/2006



<http://www.download.phoenixcontact.com>  
Please note that the data given here has been taken from the online catalog. For comprehensive information and data, please refer to the user documentation. The General Terms and Conditions of Use apply to Internet downloads.

### Technical data

#### Electrical characteristics

Note	For housing HC-B6 to B48, for housing HC-ADVANCE-B6 to B24, hinged retaining frame HC-M-MHR... necessary
Ambient temperature (operation)	-40 °C ... 125 °C

**Mechanical characteristics**

Insertion/withdrawal cycles	≥ 500
-----------------------------	-------

**General characteristics**

Number of module slots	2
Inflammability class acc. to UL 94	V0
Assembly instructions	Housing height ≥ 72 mm. Plug-in connections may only be operated only when there is no load/voltage.

**Material data**

Contact carrier material	PC
--------------------------	----

**Certificates / Approvals**

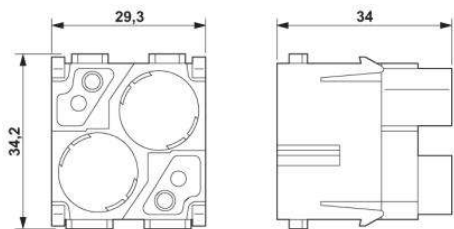


Certification

CUL, GOST, UL

**Diagrams/Drawings**

Dimensioned drawing



Female insert

**Address**

PHOENIX CONTACT Deutschland GmbH  
Flachmarktstr. 8  
32825 Blomberg, Germany  
Phone +49 5235 3 12000  
Fax +49 5235 3 41200  
<http://www.phoenixcontact.de>



© 2010 Phoenix Contact  
Technical modifications reserved;