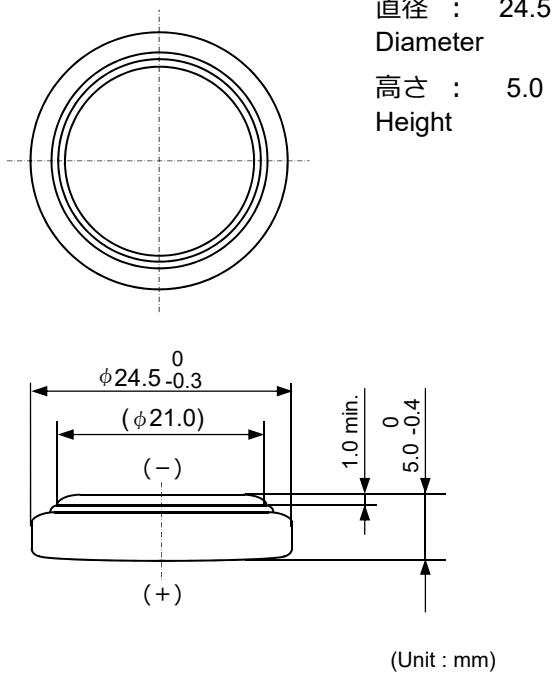


コイン形二酸化マンガンリチウム電池  
Coin manganese dioxide lithium batteries

# CR2450R

■外形寸法 Dimensions



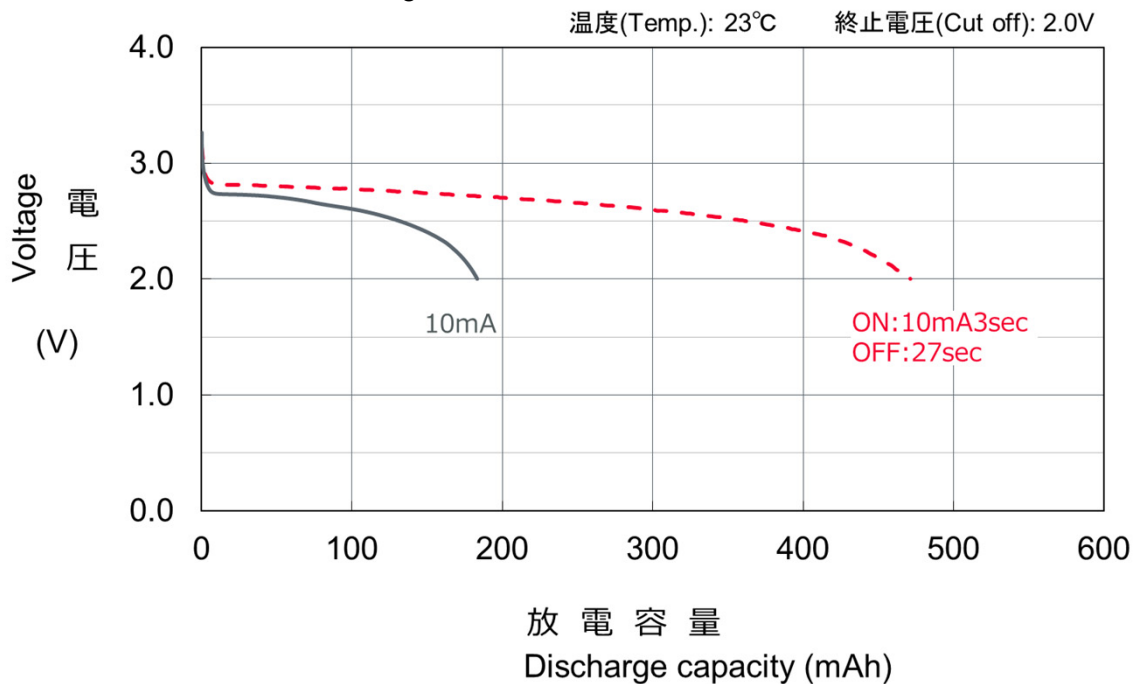
■定格 Specifications

公称電圧 Nominal Voltage	3.0 V
公称容量 (終止電圧2.0V) Nominal Capacity ( 2.0V cutoff)	500 mAh
推奨連続放電電流値 (容量利用率高) Recommended Continuous Discharge Current (High capacity usage rate)	≦3 mA
最大パルス放電電流(mA) *DOD50%時, 23℃, パルス長さ3sec, 2V以上 *Assumption : Current to keep higher than 2V at 50% discharge with 23℃ and pulse length 3sec. Maximum Pulse Discharge current (mA)	50 mA
標準質量 Weight	6.0 g
使用温度範囲 Operating Temperature	-30 ~ +70℃
UL認定合格部品 <b>UL Recognized components</b>	
● 許可番号 Certification number : MH12566	
● User replaceable	

■放電特性

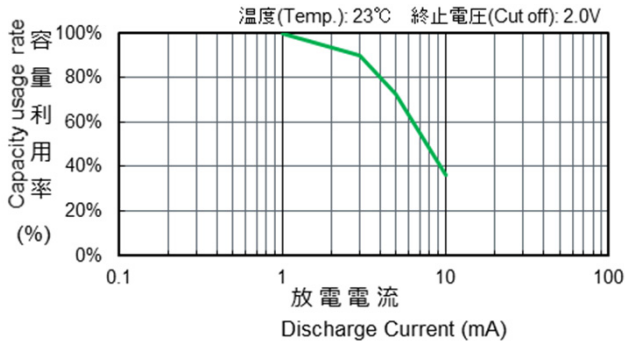
Discharge Characteristics

Test Condition: constant discharge



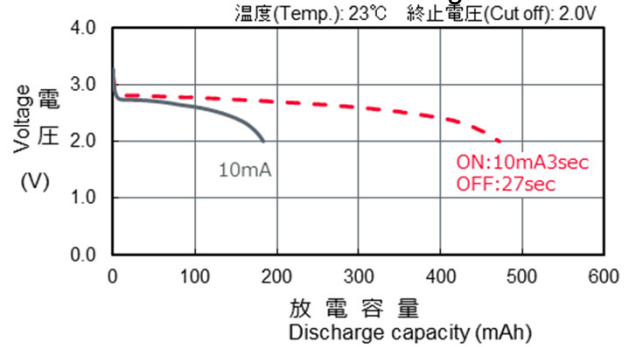
■ 放電負荷特性

Discharge Characteristics on Load



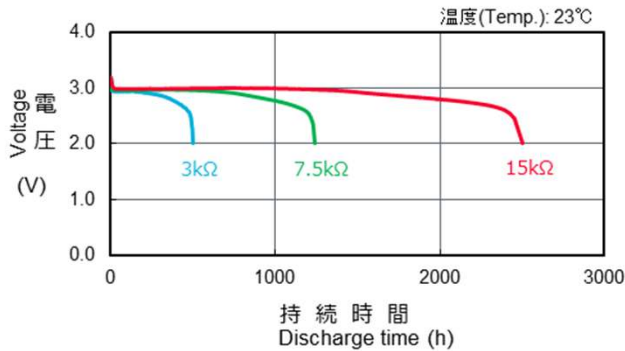
■ 放電特性

Discharge Characteristics  
Test Condition: constant discharge



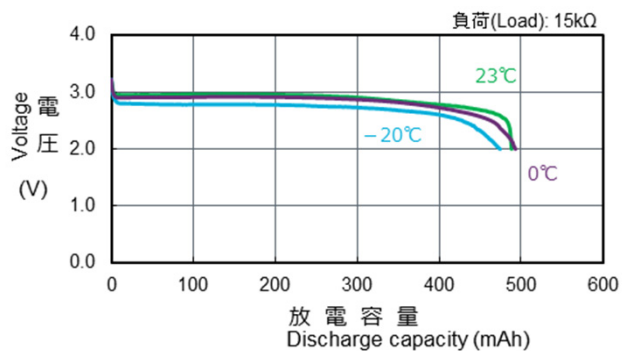
■ 放電負荷特性

Discharge Characteristics by Load  
Test Condition: constant discharge



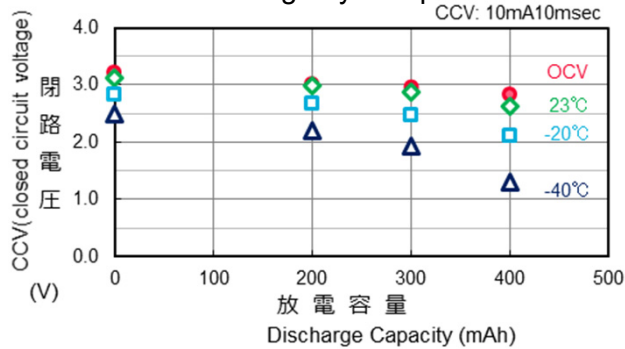
■ 放電温度特性

Discharge Characteristics by Temperature  
Test Condition: constant discharge



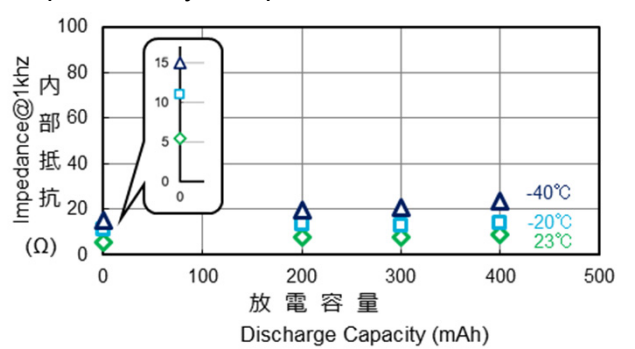
■ 閉路放電特性

Closed Circuit Voltage by Temperature



■ 内部抵抗

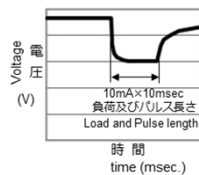
Impedance by Temperature



試験方法 / Test method

未放電の電池と規定の容量(200mAh,300mAh,400mAh @23°C,3kΩ)まで放電させた電池を10mA×10msec(1パルス)の条件で測定した際の電圧値。

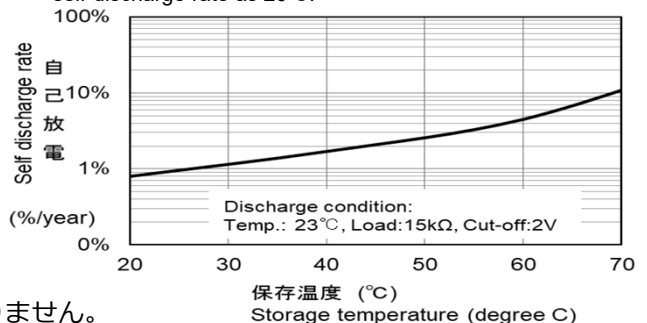
Voltage when the Non-discharged battery and the battery discharged to the specific capacity(200mAh,300mAh,400mAh @23°C,3kΩ) is measured under the condition of 10mA × 10msec (1 pulse).



■ 自己放電特性

Self Discharge Characteristic by Temperature

注：20°C未満の自己放電率は20°Cと同じ自己放電率になります。  
Note: The self-discharge rate of less than 20°C shows the same self-discharge rate as 20°C.



\*記載のデータ及び数値は、参考値であり保証値ではありません。

\*Data is not guaranteed, and is provided for reference purposes only.