

DO NOT SCALE FROM THIS PRINT

PRF24-J-C-EP-405-BS-X

**SERIES**  
-24: 2.4MM

**GENDER**  
-J: JACK

**TYPE**  
-C: CABLE

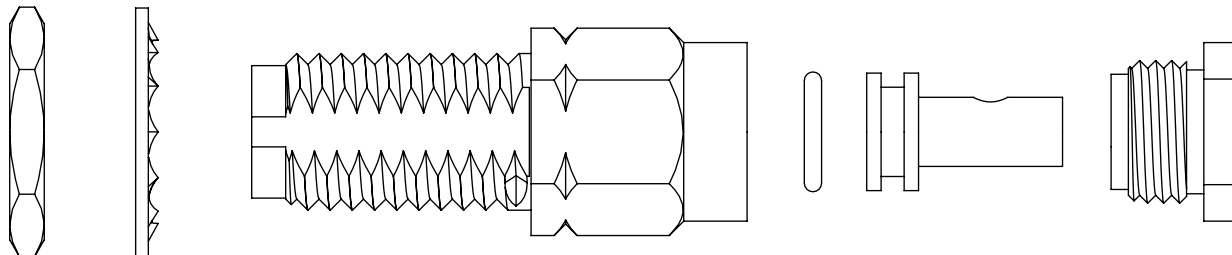
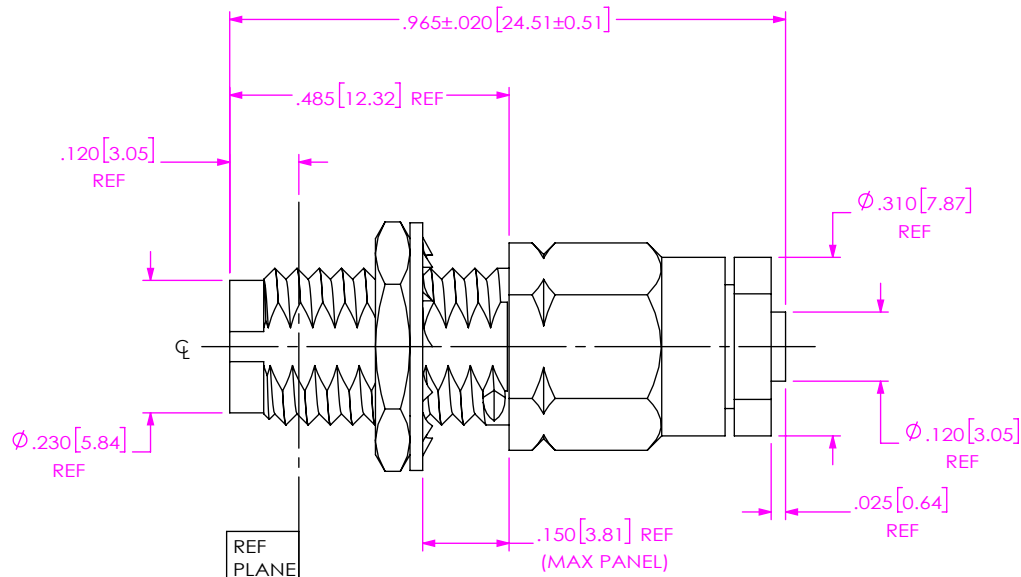
**PLATING**  
-EP: 50µ" EXTRA HEAVY GOLD CENTER CONTACT, PASSIVATED OUTER CONTACT

**PACKAGING**  
-B: BULK (IN INCREMENTS OF 50)  
(BLANK): STANDARD PACKAGING

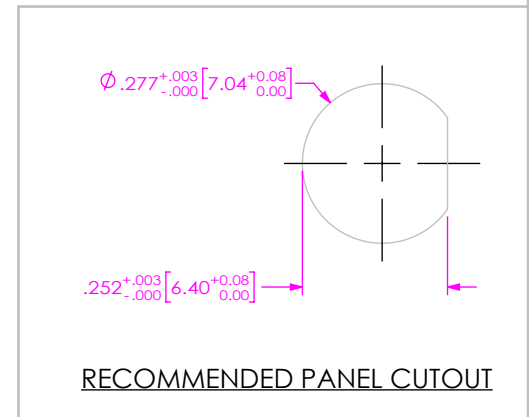
**TERMINATION**  
-S: SOLDER CLAMP

**ORIENTATION**  
-B: BULKHEAD

**CABLE TYPE**  
-405: RG-405 SEMI RIGID



EXPLODED VIEW  
NOT TO SCALE  
(FOR CLARITY ONLY)



RECOMMENDED PANEL CUTOUT

NOTES:

- MATERIAL:**  
BODY, CLAMP NUT, JAM NUT, LOCK WASHER, OUTER CONTACT: STAINLESS STEEL.  
O-RING: SILICONE RUBBER.  
BEAD: ULTEM.  
SOLDER FERRULE: BRASS ALLOY  
CONTACT: BERYLLIUM COPPER.
- FINISH:**  
BODY, CLAMP NUT, JAM NUT, LOCK WASHER, OUTER CONTACT: PASSIVATED.  
CONTACT, SOLDER FERRULE: GOLD OVER NICKEL PLATE,  
50 µIN MIN GOLD OVER 50 µIN MIN NICKEL.

3. PCI P/N: 3222.

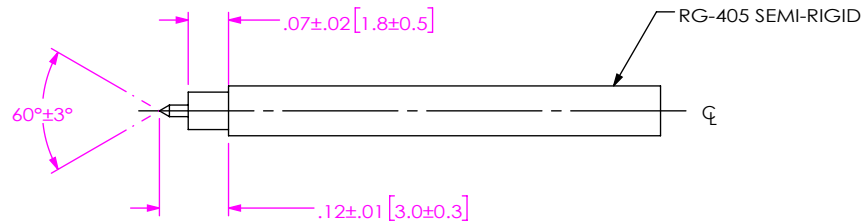
4. BULK PACKAGING OPTION (-B) FOR ORDERS IN INCREMENTS OF 50 PCS.

UNLESS OTHERWISE SPECIFIED, DIMENSIONS ARE IN INCHES. TOLERANCES ARE: DECIMALS                      ANGLES .XX: ±.01                              1° .XXX: ±.005 .XXXX: ±.0005	<b>PROPRIETARY NOTE</b> * THIS DOCUMENT CONTAINS CONFIDENTIAL AND PROPRIETARY INFORMATION AND ALL DESIGN, MANUFACTURING, REPRODUCTION, USE, PATENT RIGHTS AND SALES RIGHTS ARE EXPRESSLY RESERVED BY SAMTEC, INC. THIS DOCUMENT SHALL NOT BE DISCLOSED, IN WHOLE OR PART, TO ANY UNAUTHORIZED PERSON OR ENTITY NOR REPRODUCED, TRANSFERRED OR INCORPORATED IN ANY OTHER PROJECT IN ANY MANNER WITHOUT THE EXPRESS WRITTEN CONSENT OF SAMTEC, INC.	<b>DESCRIPTION:</b> 2.4MM JACK, BULKHEAD SOLDER CLAMP FOR RG-405 SEMI RIGID CABLE	
		DO NOT SCALE DRAWING	SHEET SCALE: 3:1

REVISION B

1A. TRIM CABLE JACKET TO EXPOSE DIELECTRIC & CENTER CONDUCTOR AS SHOWN.

1B. POINT CENTER CONDUCTOR AS SHOWN.



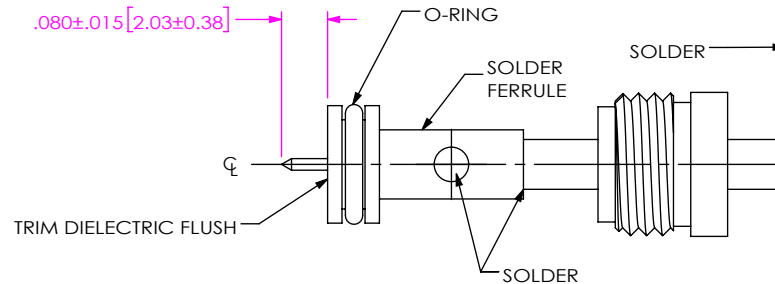
IN-PROCESS VIEW 1

2A. SLIDE CLAMP NUT OVER CABLE AS SHOWN.

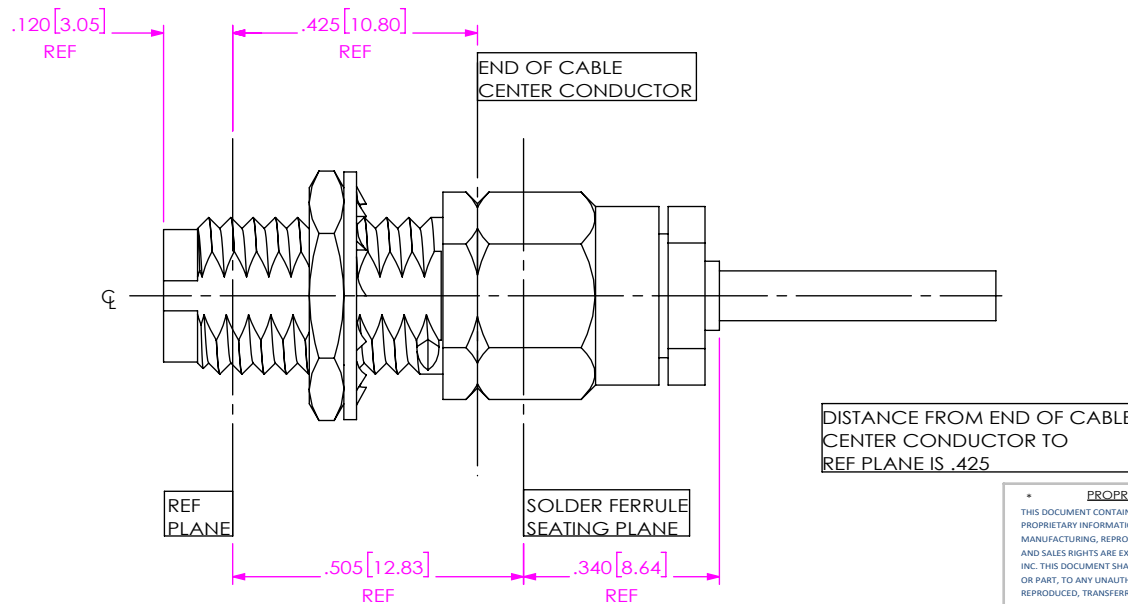
2B. INSERT CABLE INTO SOLDER FERRULE UNTIL SEATED AND SOLDER WHERE SHOWN.

2C. TRIM DIELECTRIC FLUSH TO FACE OF SOLDER FERRULE (DO NOT NICK CENTER COND.)

2D. INSTALL O-RING INTO GROOVE IN SOLDER FERRULE FLANGE AS SHOWN.



IN-PROCESS VIEW 2



3A. INSERT CABLE/CONTACT SUB-ASSEMBLY INTO CONNECTOR UNTIL SEATED AND TIGHTEN CLAMP NUT TO 25-35 IN/LBS.

IN-PROCESS VIEW 3

**PROPRIETARY NOTE**  
 THIS DOCUMENT CONTAINS CONFIDENTIAL AND PROPRIETARY INFORMATION AND ALL DESIGN, MANUFACTURING, REPRODUCTION, USE, PATENT RIGHTS AND SALES RIGHTS ARE EXPRESSLY RESERVED BY SAMTEC, INC. THIS DOCUMENT SHALL NOT BE DISCLOSED, IN WHOLE OR PART, TO ANY UNAUTHORIZED PERSON OR ENTITY NOR REPRODUCED, TRANSFERRED OR INCORPORATED IN ANY OTHER PROJECT IN ANY MANNER WITHOUT THE EXPRESS WRITTEN CONSENT OF SAMTEC, INC.



520 PARK EAST BLVD, NEW ALBANY, IN 47150  
 PHONE: 812-944-6733 FAX: 812-948-5047  
 e-Mail info@SAMTEC.com code 55322

DO NOT SCALE DRAWING

SHEET SCALE: 3:1

DESCRIPTION: 2.4MM JACK, BULKHEAD SOLDER CLAMP FOR RG-405 SEMI RIGID CABLE

DWG. NO. PRF24-J-C-EP-405-BS-X

BY: ADAM H. 2/07/2020 SHEET 2 OF 2