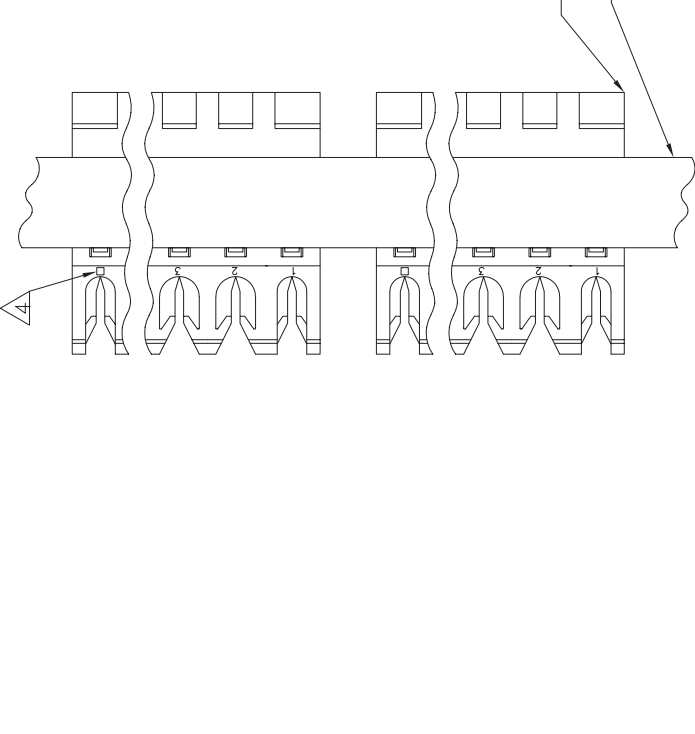


THIS DRAWING IS UNPUBLISHED. RELEASED FOR PUBLICATION BY TYCO ELECTRONICS CORPORATION. ALL RIGHTS RESERVED.

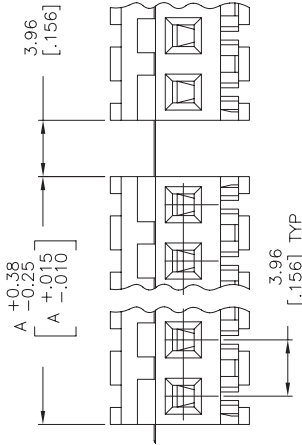
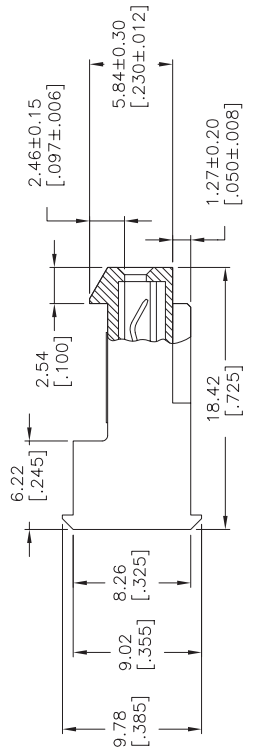
LOC CM 00 DIST CM 00

REV. TLR C ECO-07-012868

DATE 14JUN07 DATE DB KW PART NO



CONNECTOR ASSEMBLY TAPE



95.10	3.744	24	5-641301-4
91.14	3.588	23	5-641301-3
87.17	3.432	22	5-641301-2
83.21	3.276	21	5-641301-1
79.25	3.120	20	5-641301-0
75.29	2.964	19	4-641301-9
71.32	2.808	18	4-641301-8
67.36	2.652	17	4-641301-7
63.40	2.496	16	4-641301-6
59.44	2.340	15	4-641301-5
55.47	2.184	14	4-641301-4
51.51	2.028	13	4-641301-3
47.55	1.872	12	4-641301-2
43.59	1.716	11	4-641301-1
39.62	1.560	10	4-641301-0
35.66	1.404	9	3-641301-9
31.70	1.248	8	3-641301-8
27.74	1.092	7	3-641301-7
23.77	.936	6	3-641301-6
19.81	.780	5	3-641301-5
15.85	.624	4	3-641301-4
11.89	.468	3	3-641301-3
7.92	.312	2	3-641301-2
95.10	3.744	24	5-641301-4
91.14	3.588	23	5-641301-3
87.17	3.432	22	5-641301-2
83.21	3.276	21	5-641301-1
79.25	3.120	20	5-641301-0
75.29	2.964	19	4-641301-9
71.32	2.808	18	4-641301-8
67.36	2.652	17	4-641301-7
63.40	2.496	16	4-641301-6
59.44	2.340	15	4-641301-5
55.47	2.184	14	4-641301-4
51.51	2.028	13	4-641301-3
47.55	1.872	12	4-641301-2
43.59	1.716	11	4-641301-1
39.62	1.560	10	4-641301-0
35.66	1.404	9	3-641301-9
31.70	1.248	8	3-641301-8
27.74	1.092	7	3-641301-7
23.77	.936	6	3-641301-6
19.81	.780	5	3-641301-5
15.85	.624	4	3-641301-4
11.89	.468	3	3-641301-3
7.92	.312	2	3-641301-2

DIM A		NO OF CIRCUITS		PART NO	
7.92		2		641301-2	
11.89		3		641301-3	
15.85		4		641301-4	
19.81		5		641301-5	
23.77		6		641301-6	
27.74		7		641301-7	
31.70		8		641301-8	
35.66		9		641301-9	
39.62		10		641301-0	
43.59		11		641301-1	
47.55		12		641301-2	
51.51		13		641301-3	
55.47		14		641301-4	
59.44		15		641301-5	
63.40		16		641301-6	
67.36		17		641301-7	
71.32		18		641301-8	
75.29		19		641301-9	
79.25		20		641301-0	
83.21		21		641301-1	
87.17		22		641301-2	
91.14		23		641301-3	
95.10		24		641301-4	

THIS DRAWING IS A CONTROLLED DOCUMENT.

REV. B. LEWIS 01 MAY 98
 CHK. SWING 01 MAY 98
 AUTH. D. CLARK 01 MAY 98

TYCO ELECTRONICS
 Tyco Electronics Corporation
 Harrisburg, Pa 17105-3608

MTA-156 CONNECTOR ASSEMBLY,
 26 AWG, STANDARD
 TAPE MOUNTED

SIZE CASE CODE DRAWING NO
 108-1051 APPLICATION SPEC
 114-1020

WEIGHT
 A2 00779 ©=641301

CUSTOMER DRAWING SCALE 1:1 SHEET 1 OF 1

MATERIAL FINISH ANGLE

0 PL ±
 1 PL ±
 2 PL ±
 3 PL ±
 4 PL ±
 5 PL ±
 6 PL ±
 7 PL ±
 8 PL ±
 9 PL ±
 10 PL ±
 11 PL ±
 12 PL ±
 13 PL ±
 14 PL ±
 15 PL ±
 16 PL ±
 17 PL ±
 18 PL ±
 19 PL ±
 20 PL ±
 21 PL ±
 22 PL ±
 23 PL ±
 24 PL ±

RESTRICTED TO

SCALE 1:1 SHEET 1 OF 1

METRIC

- MATERIAL: CONNECTOR - NYLON UL94V-2 (BLUE) CONTACTS - 0.30[.012] THICK COPPER ALLOY BRIGHT TIN-LEAD 0.00203[.000080] MIN THICK FOR CONTACTS 641301-2 THRU 2-641301-4 MATTE WHISKER MITIGATED TIN 0.00203[.000080] MIN THICKNESS OVER NICKEL UNDERPLATE FOR 3-641301-2 THRU 5-641301-4.
- CONTACTS ACCEPT 26 AWG WIRE WITH 2.41[.095] MAX INSULATION DIAMETER.
- CONTACTS MUST ACCEPT 1.14±0.03 [.045±.001] SQUARE POST AND REMAIN LOCKED IN POSITION.
- IDENTIFICATION NUMBER FOR LAST CIRCUIT MAY NOT APPEAR ON ALL ASSEMBLIES.
- DIMENSIONS IN BRACKETS ARE IN INCHES.
- HOUSING FEATURES ARE: FEED-THRU WITH LOCKING RAMP.