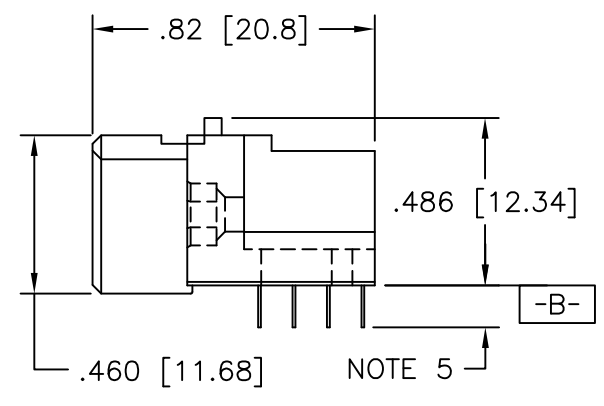
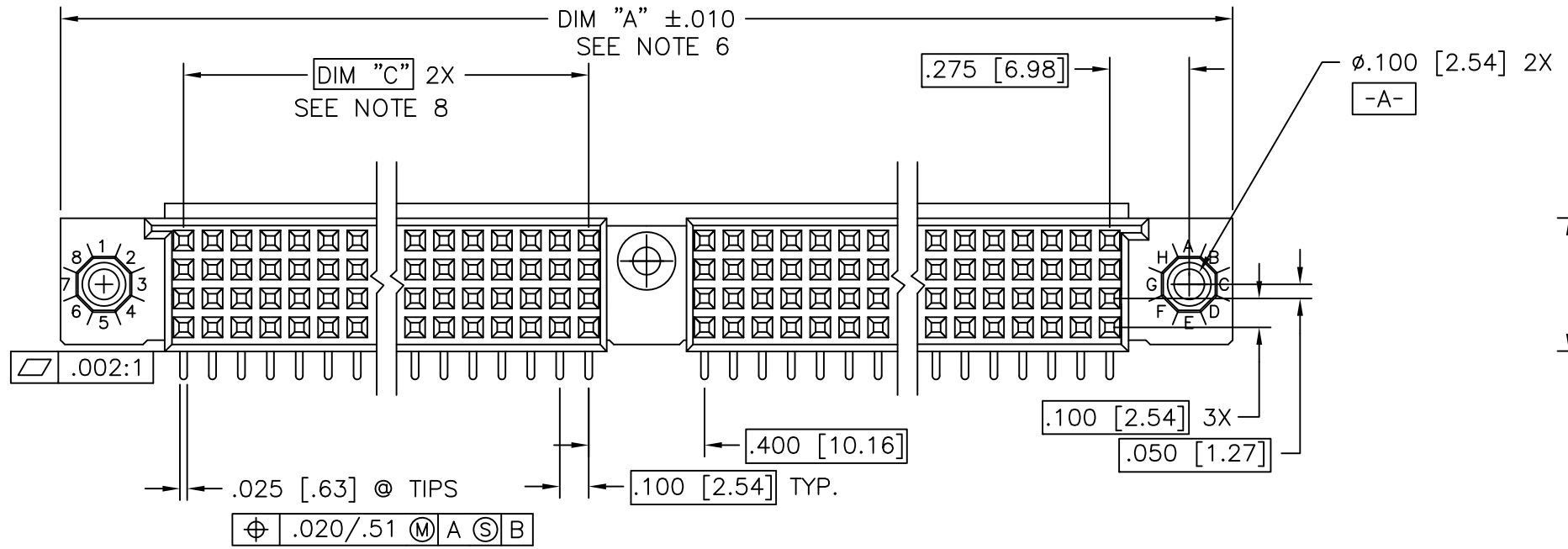
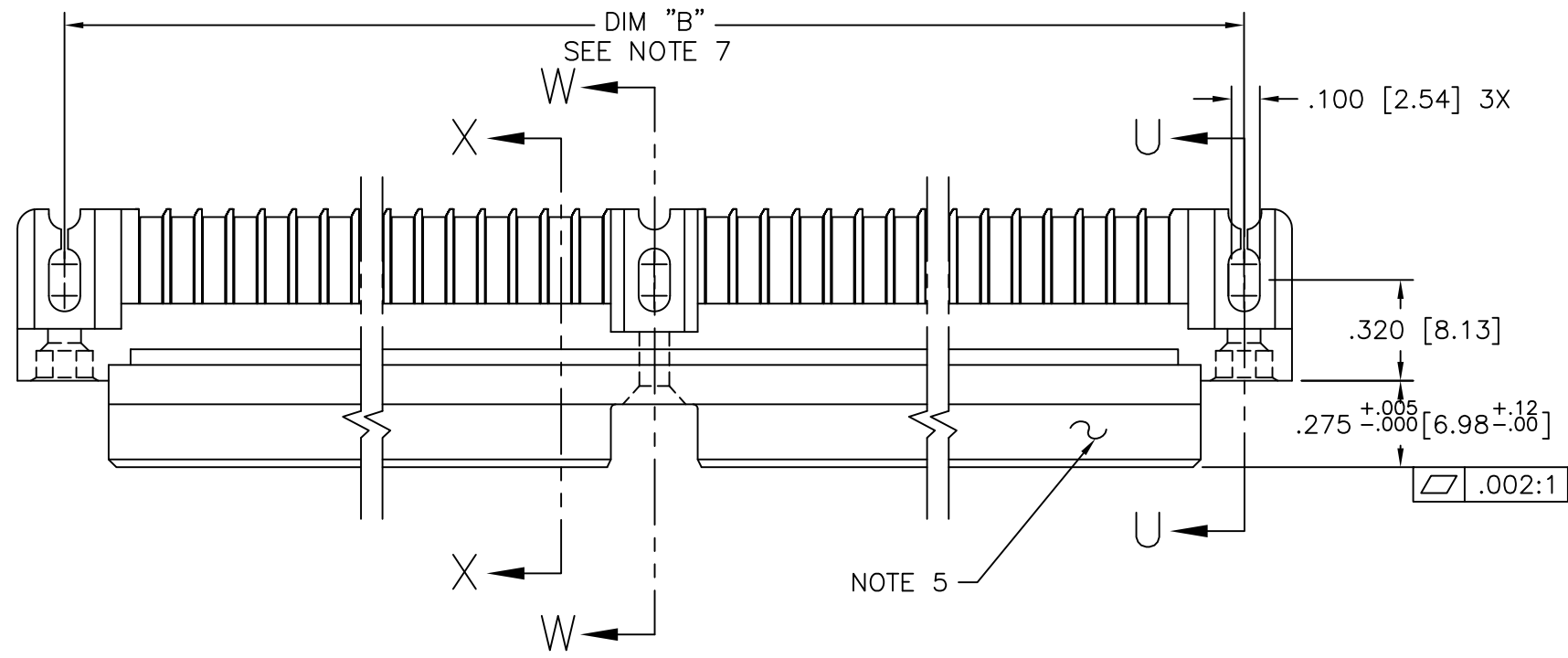
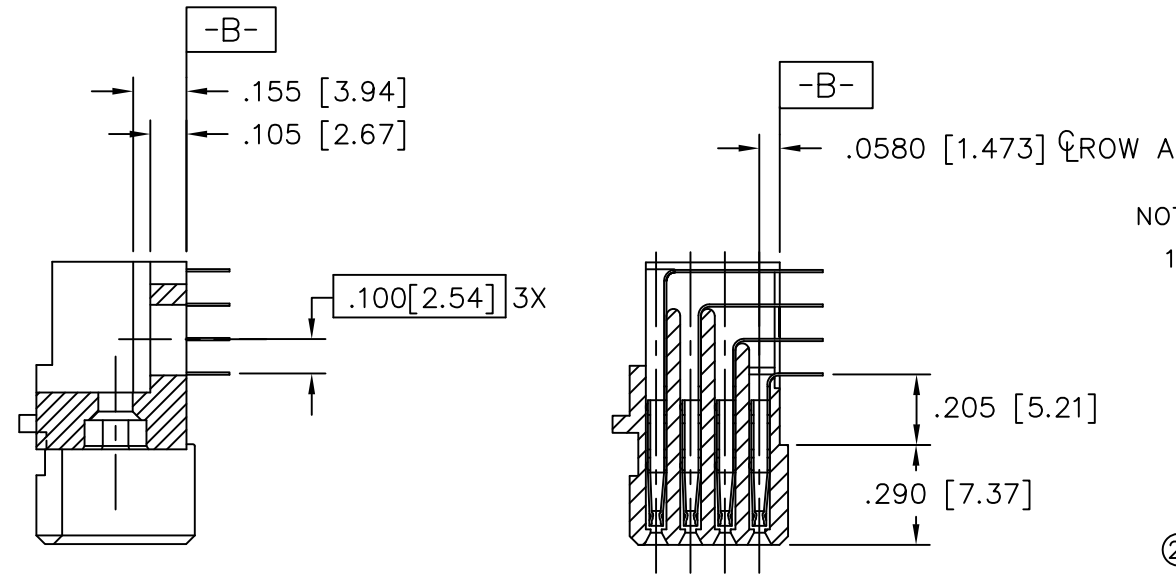


PRODUCT NUMBER  
SEE NOTE 1



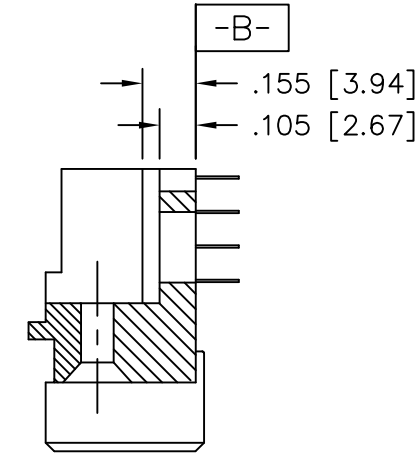
mat'l. code SEE NOTE 3				surface ISO 1302 <input checked="" type="checkbox"/>		tolerance ISO 406 ISO 1101		projection 		product family HPC	
ltr	ecn no	dr	date	tolerances unless otherwise specified		linear		INCH/MM		title	
N	ELX-I-26890	MJA	05/03/17	.XX $\pm$ .01/.X $\pm$ 0.3		.XXX $\pm$ .005/.XX $\pm$ 0.13				4 ROW R/A RECEPTACLE SOLDER TAIL, 1 GUIDE PIN	
H	v82251	HTB	12/28/98	$\sigma$ $\pm$ 2'		.XXX $\pm$ .0020/.XXX $\pm$ 0.051		scale 1:1		dwg no 50004	
J	v00253	JWS	1/12/00	dr	D. SHEAFFER	1/07/90		<b>Amphenol FCi</b>		sheet 1 of 2 size A3	
K	v05-0510	LP	7/18/05	enr	S. CLARK	1/07/90					
L	M06-0255	EAE	7/06/06	chr	M JACOB	05/03/17					
M	M08-0280	AGS	9/30/08	appd	BIJU K PAUL	05/03/17					
sheet	revision	N	M								
index	sheet	1	2								

PRODUCT NUMBER SEE NOTE 1	NUMBER OF POSITIONS SEE NOTE 2	"Z" - TAIL LENGTH	SOLDER TAIL PLATING	CONTACT PLATING NOTE 11
50004-1YYYYZ	YYY	NOTE 4	TIN LEAD	30u"/.76um Au
50004-3YYYYZ	YYY	NOTE 4	TIN LEAD	50u"/1.27um Au
50004-5YYYYZ	YYY	NOTE 4	TIN LEAD	30u"/.76um GXT
50004-5YYYYZLF	YYY	NOTE 4	TIN	30u"/.76um GXT



SECTION U-U

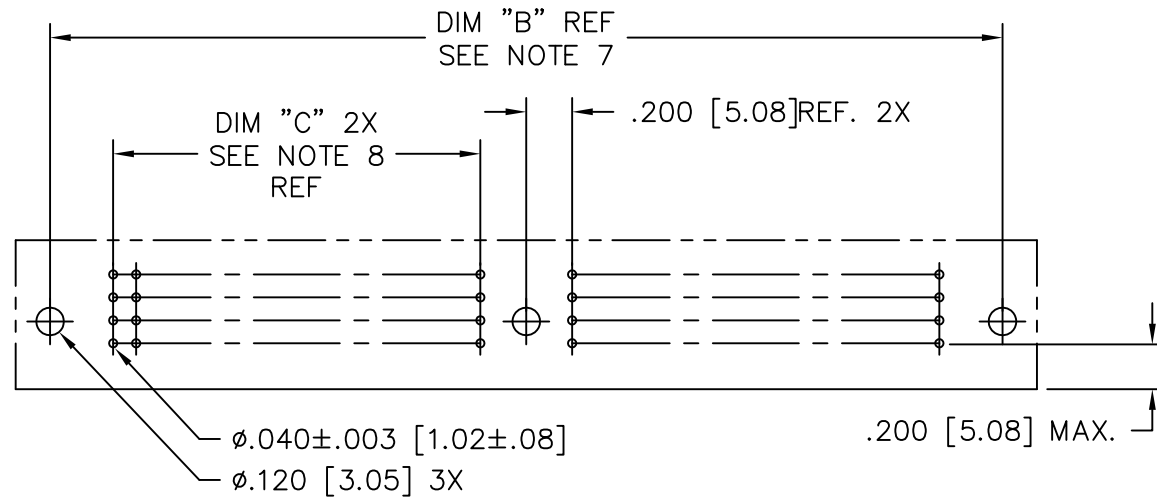
SECTION X-X



SECTION W-W

NOTES:

- PRODUCT NUMBERING CODE:  
50004 - X YYY Z LF  
  - 50004 - BASE NUMBER
  - X - LEAD FREE (OPTIONAL WITH GTX VERSION)
  - YYY - TAIL LENGTH (NOTE 4)
  - Z - NO. OF POSITIONS (NOTE 2)
  - LF - PLATING (SEE TABLE)
- THIS PRODUCT IS CONFIGURED IN SIZES OF 20 THRU 122 COLUMNS IN INCREMENTS OF TWO. i.e.: 20,22,24,26.....118,120,122.
- HOUSING MATERIAL: GLASS AND MINERAL FILLED THERMOPLASTIC. CONTACT MATERIAL: BeCu
- "Z" - TAIL LENGTH OPTIONS:  
 E = .125±.010 / 3.18±.25  
 F = .145±.010 / 3.68±.25  
 H = .180±.010 / 4.57±.25
- COMPANY NAME, PART NUMBER AND LOT CODE TO APPEAR ON THIS SURFACE PER BUS-12-108.
- DIMENSION "A" CALCULATION = .100 (2.54) X NO. OF COLUMNS + 1.05 (26.7)
- DIMENSION "B" CALCULATION = .100 (2.54) X NO. OF COLUMNS + .750 (19.05)
- DIMENSION "C" CALCULATION = .100 (2.54) X NO. OF COLUMNS DIVIDED BY 2 - .100 (2.54)
- PRODUCT WITH "LF" SUFFIX MEETS EUROPEAN UNION DIRECTIVES AND OTHER COUNTRY REGULATIONS AS DESCRIBED IN GS-22-008.
- THIS HOUSING WILL WITHSTAND EXPOSURE TO 260 DEGREES C PEAK TEMPERATURE FOR 10 - 30 SECONDS IN A CONVECTION, INFRA-RED OR VAPOR PHASE REFLOW OVEN.
- PLATING OPTION:  
MAY BE EITHER GOLD OR GXT PLATED AT MANUFACTURER'S OPTION.



RECOMMENDED PCB LAYOUT  
(ALL HOLES LOCATED ON .100 [2.54] GRID UNLESS OTHERWISE SPECIFIED)

mat'l. code NOTE 3		surface ISO 1302 ✓	tolerance ISO 406 ISO 1101	projection 	product family HPC
ltr	ecn no	dr	date	tolerances unless otherwise specified	title 4 ROW R/A RECEPTACLE SOLDER TAIL, 1 GUIDE PIN
M				angles linear XX±.01/XX±0.3 XXX±.005/XX±0.13 XXXX±.0020/XXX±0.051	
				σ±2	INCH/MM scale 1:1
sheet index		revision sheet	dr D. SHEAFFER 1/07/90 enr S. CLARK 1/07/90 chr S. CLARK 1/07/90 appd S. CLARK 1/07/90		dwg no 50004 sheet 2 of 2 size A3
					type Product Customer Drawing