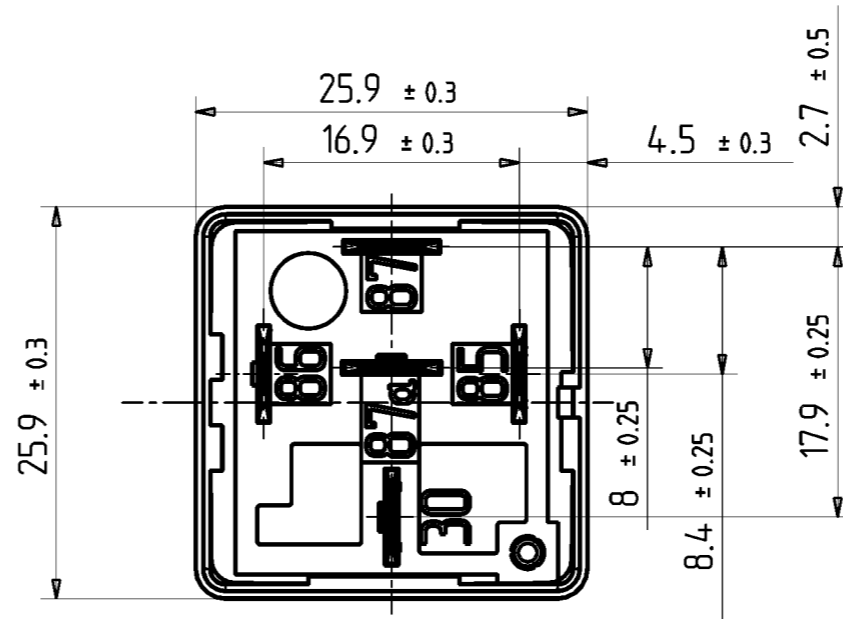


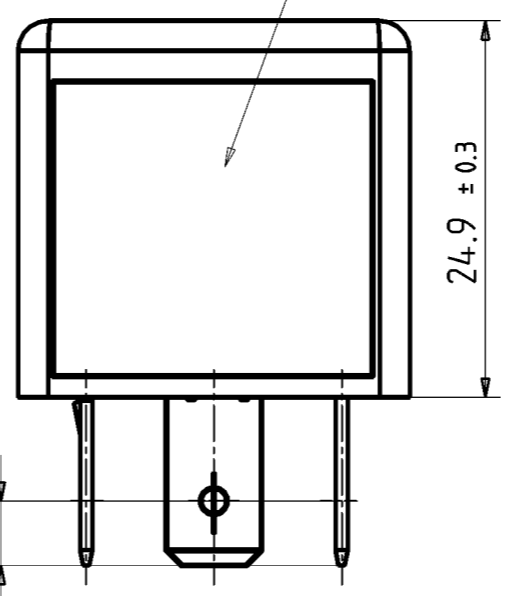
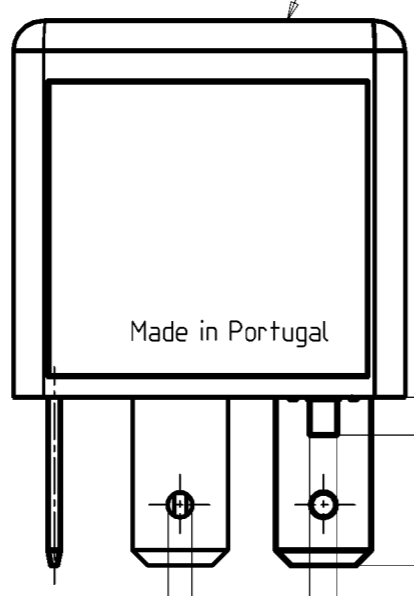
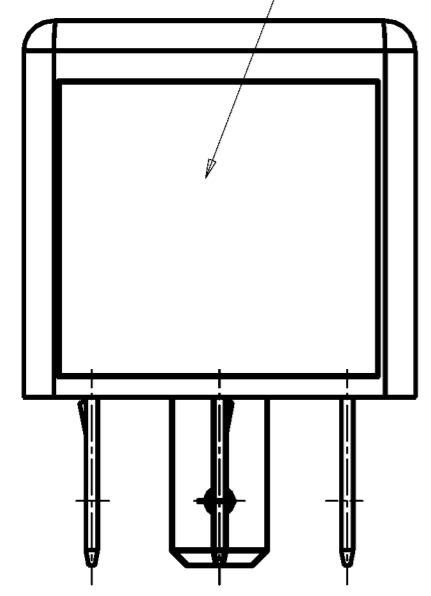
1:1



Circuit Diagram

Run-in test and date codes

Marking Specification



∅ 1.75 ± 0.1      2.2 max.

Latching tab area

8 min.  
11 ± 0.5

4.25 ± 0.25

Plug-in terminals 85, 86, 87, 30 and 87a  
 Terminals shape in line with DIN/ISO 8092-1 6.3x0.80  
 Material CuSn for terminals 85 and 86  
 Material E-Cu for terminals 87, 30 and 87a  
 All terminals pre-tinned 2...4µm  
 Universal mounting

Base material PA66-GF25, black similar to RAL 9005  
 Cover material PA66-GF25, gray similar to RAL 7005

Mit CAD erstellt, Änderungen nur im System

X933M01-51		 Maße in mm Dimensions in mm		Maßstab		---	
		Datum 2005-10-27		Dimensional drawing		A3	
		Name L.Sandoval					
		AMR PE Evora		Power F 40A		Blatt	
51		2005-10-27 LSan					
Zust. Mitteilung		Datum Name				V23134-A0007-X933-* -271-	