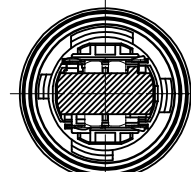
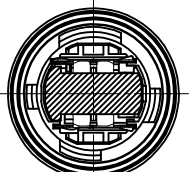


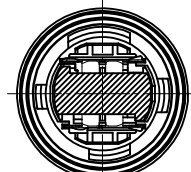
TYPE "A"
<WTY21W/7W WZX2.5x16q TYPE>



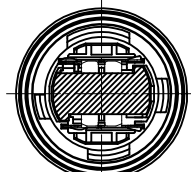
TYPE "B"
<WT21W/7W WZX2.5x16q TYPE>



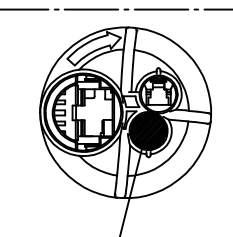
TYPE "C"
<WTY28/7W WUZ2.5x16q TYPE>



TYPE "D"
<WTY21W WUY2.5x16dTYPE>



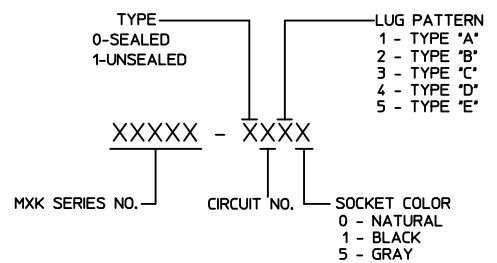
TYPE "E"
<WT21W WUX2.5x16d TYPE>



DUMMY SEAL POSITION
SINGLE BULB ONLY

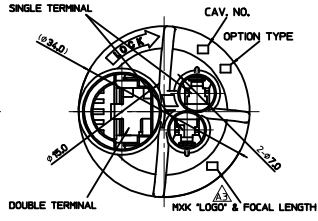
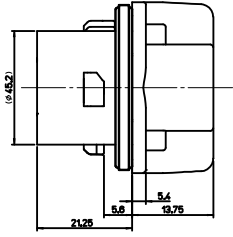
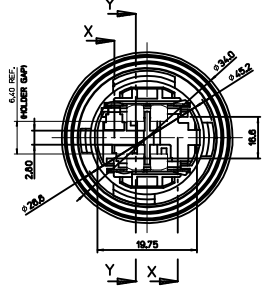
BULB TYPE: DOUBLE

BULB TYPE: SINGLE



<TABLE 1>

SOCKET TYPE	MATERIAL NO.	ORDER NO.	FOCAL LENGTH
TYPE "A"	1046110311	104611-0311	31.80
TYPE "B"	1046110321	104611-0321	
TYPE "C"	1046110331	104611-0331	
TYPE "D"	1046110341	104611-0341	
TYPE "E"	1046110351	104611-0351	



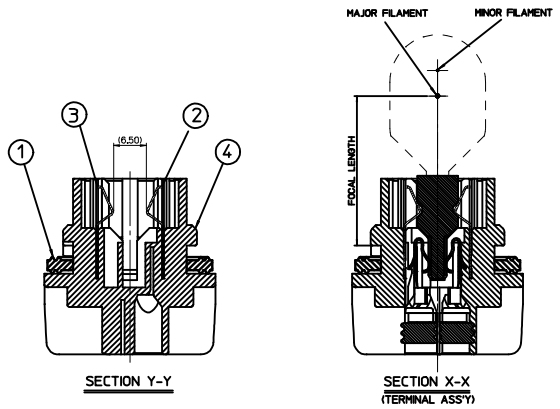
NOTE

1. PANEL THICKNESS : 3.0mm±0.1
2. APPLICABLE LAMP : WT21/7W, WTY21/7W, WTY28W/7W, WT21W, WTY21W
3. PART MUST CONFORM TO SAE/USCAR-15.
4. MATES WITH

DESCRIPTION	MATERIAL	PART NO.	WIRE RANGE	REMARK
SINGLE TERMINAL	BRASS	49869-9702	AVS 0.5~0.85mm ²	---
DOUBLE TERMINAL	BRASS	49868-9702	AVS 0.5~0.85mm ²	---
WIRE SEAL - S	SILICONE	49454-9002	1.8~2.2mm(INS. DIA)	RED
WIRE SEAL - L	SILICONE	49454-9003	1.8~2.2mm(INS. DIA)	RED
DUMMY SEAL	SILICONE	49454-9004	-	RED

<PARTS LIST>

NO.	DESCRIPTION	MATERIAL	LUG PATTERN	APPLICABLE BULB TYPE	REMARK	USAGE
①	FLOOR SEAL	SILICONE	---	---	WHITE	1
②	LAMP HOLDER-R	SUS	---	---	UNPLATED	1
③	LAMP HOLDER-L	SUS	---	---	UNPLATED	1
④	WT21 SOCKET - TYPE A	LCP, 32%	A	WTY DF(AMBER, WZX2.5x16q)	BLACK	1
	WT21 SOCKET - TYPE B	LCP, 32%	B	WT DF(CLEAR, WZX2.5x16q)		
	WT21 SOCKET - TYPE C	LCP, 32%	C	WTY DF(AMBER, WUZ2.5x16q)		
	WT21 SOCKET - TYPE D	LCP, 32%	D	WTY SF(AMBER, WUY2.5x16d)		
	WT21 SOCKET - TYPE E	LCP, 32%	E	WT SF(CLEAR, WUX2.5x16d)		



REVISED&REDRAWING EC NO: K1R2016-0064 2016/03/29
 DRAWN:SWYON
 CHKD:
 APPR:JYCHOI
 REV

QUALITY SYMBOLS
 ▽=0
 ▽=0

GENERAL TOLERANCES (UNLESS SPECIFIED)
 mm INCH
 4 PLACES ± --- ± ---
 3 PLACES ± --- ± ---
 2 PLACES ± 0.20 ± ---
 1 PLACE ± 0.3 ± ---
 ANGULAR ± 3°

DIMENSION STYLE
 MM ONLY

SCALE
 2/1

DESIGN UNITS
 METRIC

THIRD ANGLE PROJECTION

WT21 BULB SOCKET SEALED TYPE

MOLEX INCORPORATED
 MATERIAL NO.
 DOCUMENT NO.
 SD-104611-001

SHEET NO.
 1 OF 1

THIS DRAWING CONTAINS INFORMATION THAT IS PROPRIETARY TO MOLEX INCORPORATED AND SHOULD NOT BE USED WITHOUT WRITTEN PERMISSION