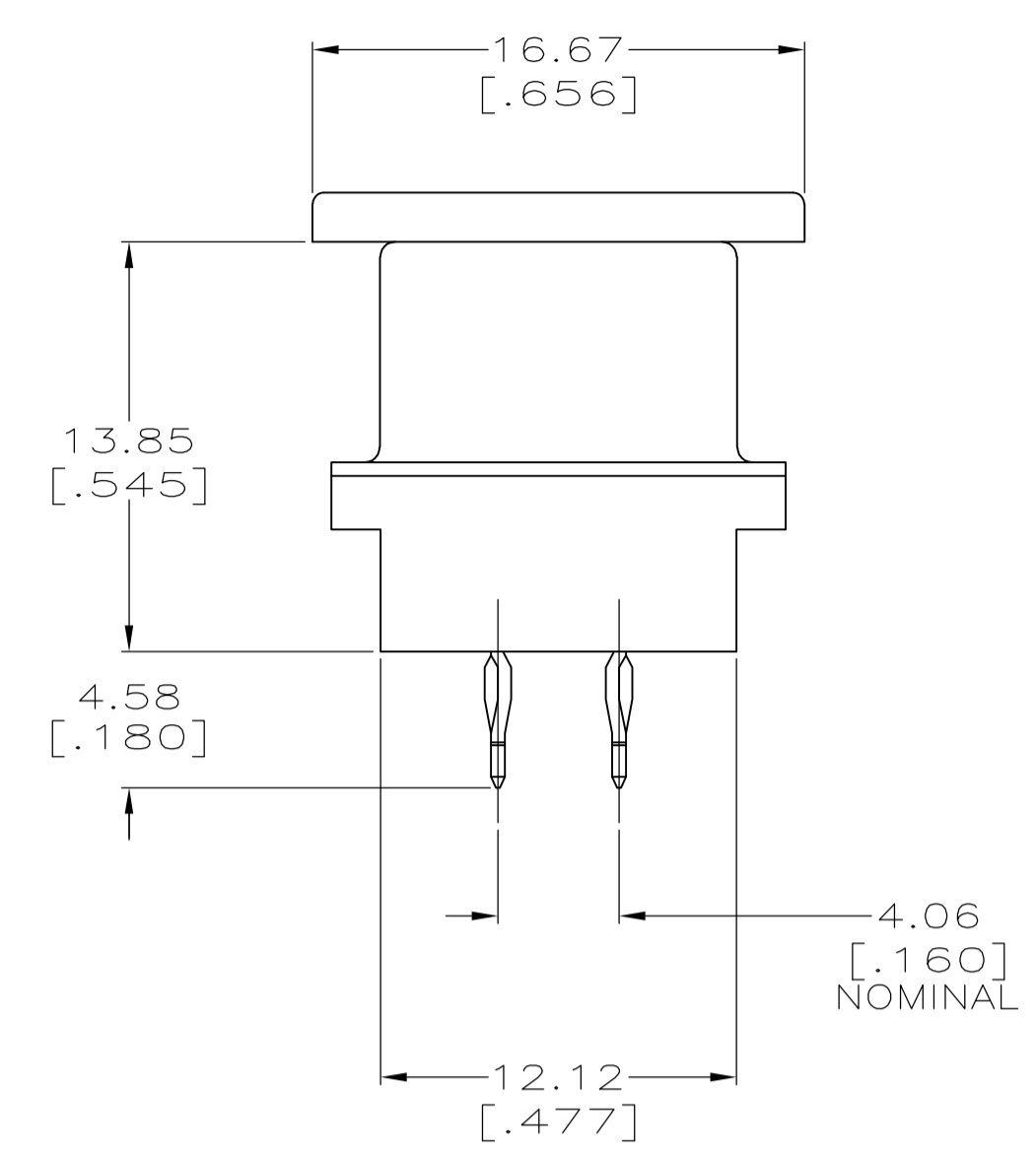
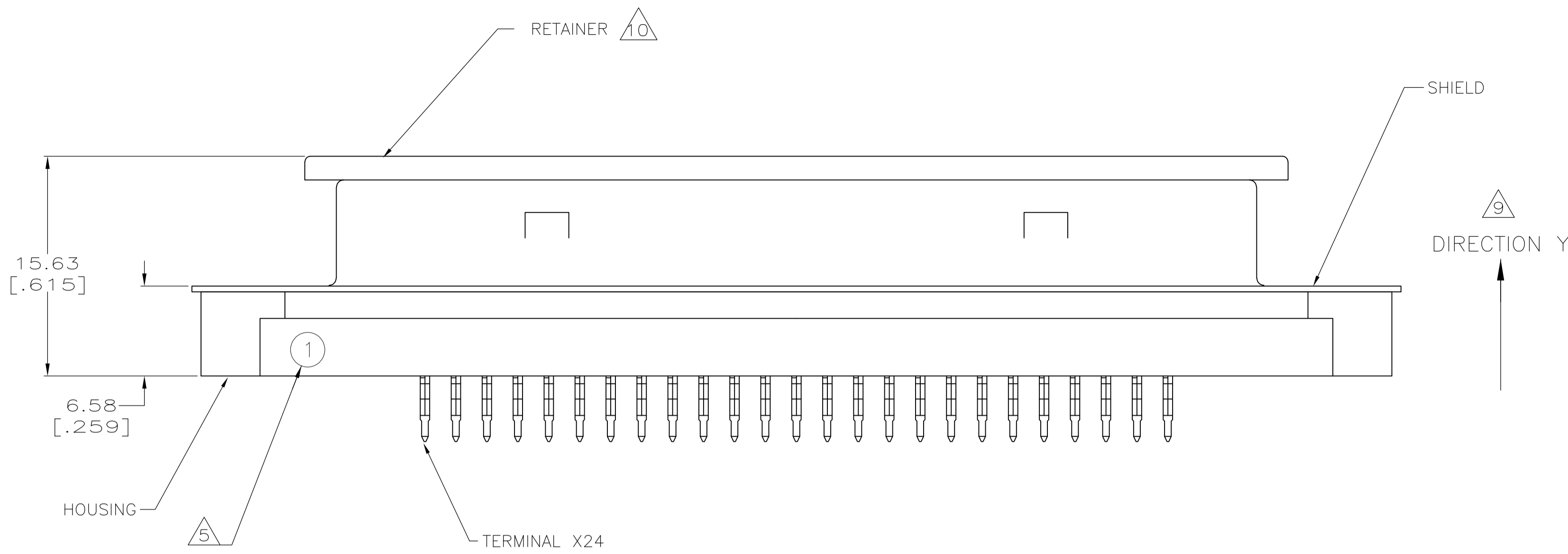
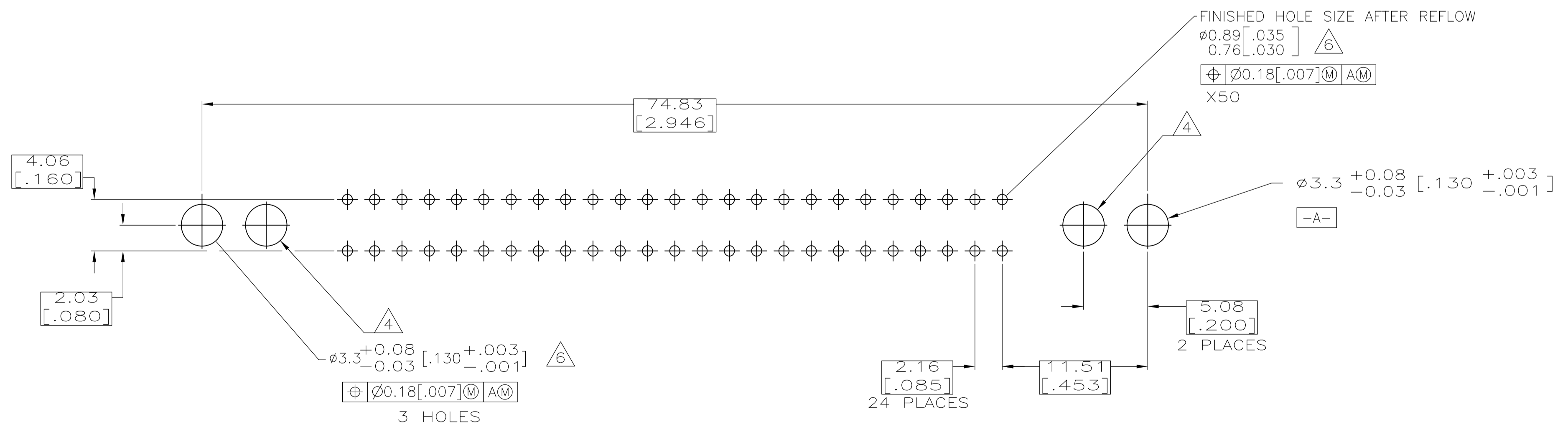
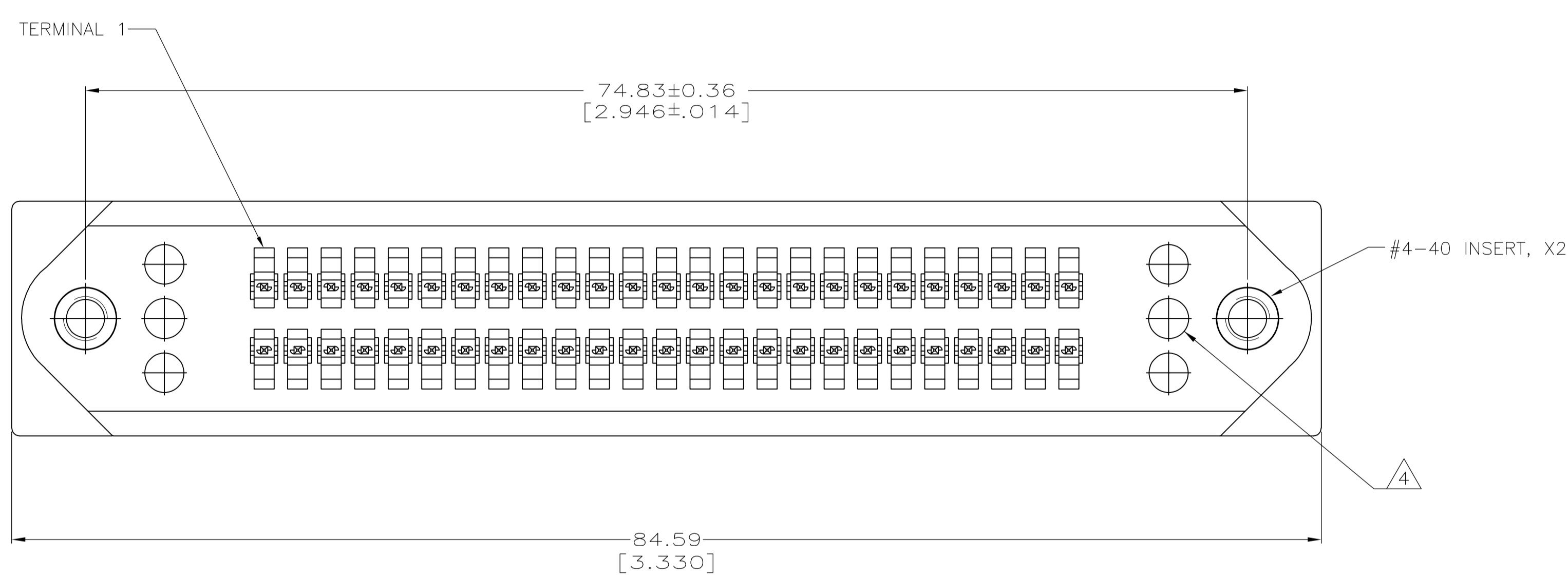


LOC		DIST		REVISIONS			
GP	00	P	LTR	DESCRIPTION	DATE	DWN	APVD
A				RELEASED PER ECO-08-005121	29FEB2008	ZMR	WLM



- △ DIMENSIONS ARE MAXIMUM UNLESS OTHERWISE SPECIFIED.
- △ MATERIAL: HOUSING - POLYESTER, BLACK. TERMINALS - COPPER ALLOY PLATED WITH 0.76µm [.000030] MINIMUM GOLD ON MATING SURFACE AND 2.54µm [.000100] MINIMUM TIN-LEAD ON ACTION PIN AREA OVER 1.27µm [.000050] MINIMUM NICKEL UNDERPLATE OVER ENTIRE TERMINAL. RETAINER - POLYETHYLENE, NATURAL. SHIELD - CARBON STEEL, PLATED BRIGHT NICKEL 5.08µm [.000200] MINIMUM. INSERTS - ZINC PLATED BRASS.
- 3. THE CONTACT SURFACES OF THE TERMINALS ARE COATED WITH LUBRICANT.
- △ OPTIONAL MOUNTING HOLE FOR SELF-TAPPING SCREW.
- △ "1" ON HOUSING INDICATES LOCATION OF TERMINAL 1.
- △ ALL PLATED-THRU HOLES SHALL BE PER AMP SPEC 115-6072.
- △ 50 LBS MINIMUM FORCE REQUIRED TO UNSEAT CONNECTOR FROM PRINTED CIRCUIT BOARD WITHOUT USE OF HARDWARE.
- 8. CENTER-TO-CENTER SPACING OF TERMINALS IS 2.16 [.085] NOMINAL.
- △ INSERTS SHALL WITHSTAND A 222 N [50 LB] PULL FORCE IN DIRECTION Y.
- △ RETAINER MUST REMAIN INSTALLED UNTIL AFTER CONNECTOR HAS BEEN INSERTED INTO PCB HOLES.



PRINTED CIRCUIT BOARD MOUNTING DIMENSIONS △△

2007381-1
PART NUMBER

THIS DRAWING IS A CONTROLLED DOCUMENT.		DIN Z.M.REAM 29FEB2008	Tyco Electronics Corporation Harrisburg, Pa 17105-3608	
DIMENSIONS: mm		CHK: W.L.MILLHIMES 29FEB2008	NAME: R.H.WERTZ 29FEB2008	
TOLERANCES UNLESS OTHERWISE SPECIFIED:		PRODUCT SPEC		
0 PLC	± -	APPLICATION SPEC		
1 PLC	± -	SIZE: A1		
2 PLC	± -	CAGE CODE: 00779		
3 PLC	± -	DRAWING NO: 2007381		
4 PLC	± -	RESTRICTED TO: -		
ANGLES	± -	CUSTOMER DRAWING		
MATERIAL	△	SCALE: 4:1		SHEET: 1 of 1
FINISH	△	REV: A		