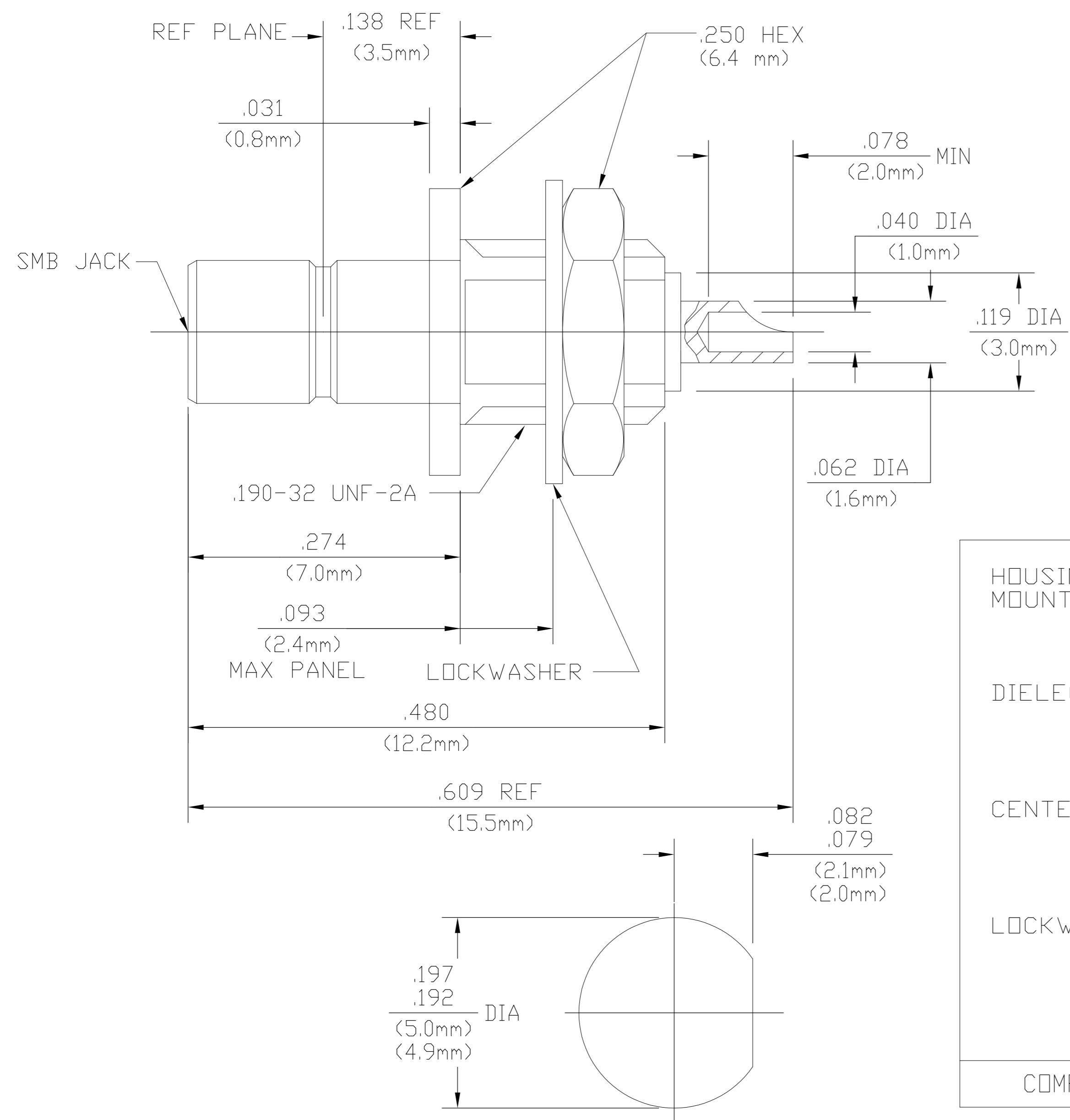


THIS DRAWING IS UNPUBLISHED. RELEASED FOR PUBLICATION
 © COPYRIGHT BY TYCO ELECTRONICS CORPORATION. ALL RIGHTS RESERVED.

LOC	DIST	REVISIONS					
AJ	00	P	LTR	DESCRIPTION	DATE	DWN	APVD
		B		REV PER ECO 07-027471	1/16/2008	DW	JL



1060442-1
 PART NUMBER

COMPONENT	MATERIAL	FINISH
HOUSING MOUNTING NUT	HALF HARD BRASS PER QQ-B-626, COMP 360	GOLD PLATE PER MIL-G-45204 OVER COPPER PLATE PER MIL-C-14550
DIELECTRIC	TFE FLUOROCARBON PER MIL-P-19468 AND FED SPEC L-P-403 AND ASTM-D-1457	N/A
CENTER CONTACT	BERYLLIUM COPPER PER ASTM-B196, ALLOY 173 OR BRASS PER ASTM-B-16	GOLD PLATE PER MIL-G-45204 OVER COPPER PLATE PER MIL-C-14550
LOCKWASHER	PHOSPHOR BRONZE PER QQ-B-750, GRADE 2B OR TIN BRASS PER ASTM-B-591	GOLD PLATE PER MIL-G-45204 OVER COPPER PLATE PER MIL-C-14550

NOTES:
 1. CAPTURED CENTER CONTACT

RECOMMENDED MOUNTING HOLE

THIS DRAWING IS A CONTROLLED DOCUMENT.		DWN T.J. 7/27/82	Tyco Electronics Corporation Harrisburg, PA 17105-3608	
DIMENSIONS: INCHES		CHK J.J. 7/27/82	NAME SMB SNAP-ON BULKHEAD JACK RECEPTACLE SOLDER POT TERMINAL	
TOLERANCES UNLESS OTHERWISE SPECIFIED:		APVD ENS 7/28/82	SIZE A2 CAGE CODE 00779 DRAWING NO C=1060442 RESTRICTED TO -	
0 PLC ± -		PRODUCT SPEC -	SCALE 8:1 SHEET 1 of 1 REV B	
1 PLC ± -		APPLICATION SPEC -		
2 PLC ± -		WEIGHT -		
3 PLC ± .005		CUSTOMER DRAWING		
4 PLC ± -				
ANGLES ± 1°				
FINISH -				