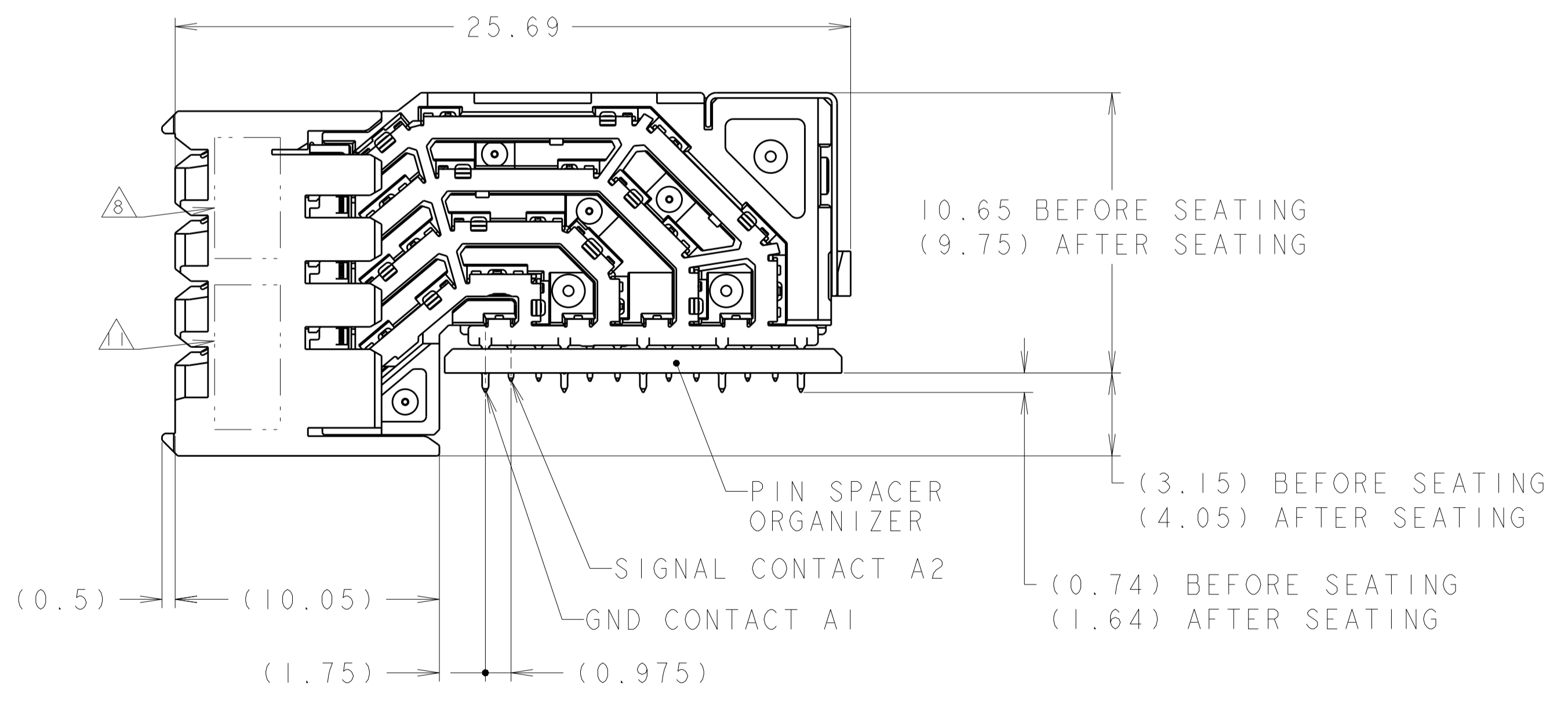
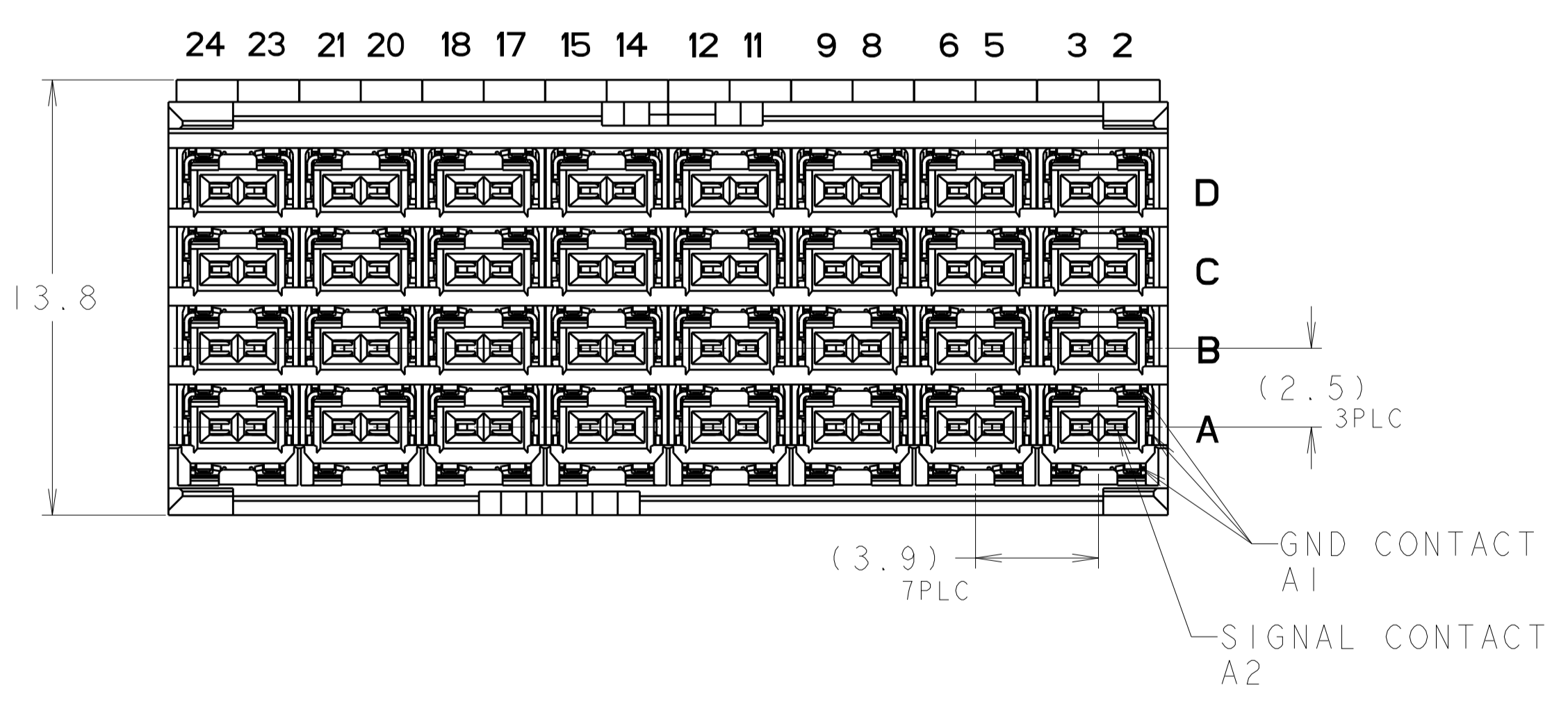
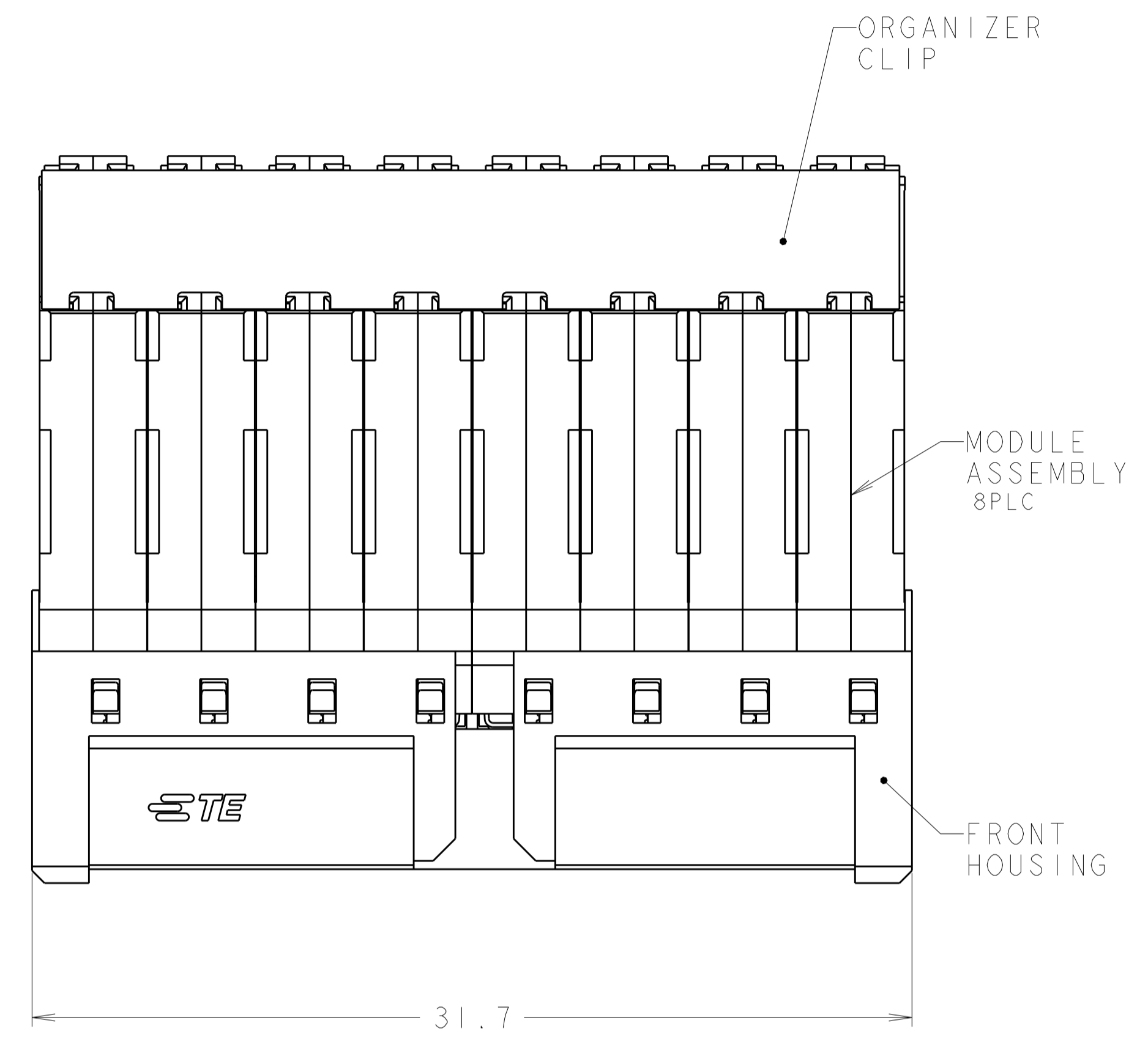


REVISIONS				
REV	LTN	DESCRIPTION	DATE	OWN APVD
A		RELEASED	16DEC2018	Y.K T.M
A1		REVISED	24DEC2019	Y.K T.M

- 1 CONTACTS AND SHIELDS - COPPER ALLOY  
 ORGANIZER - STAINLESS STEEL  
 HOUSING AND PIN SPACER - THERMOPLASTIC, UL 94V-0, BLACK
- 2 FINISH:  
 CONFORMS TO THE REQUIREMENTS OF TE PRODUCT SPECIFICATION 108-140186  
 BASED ON TELCORDIA GR-1217-CORE FOR SYSTEM QUALITY LEVEL III,  
 APPLICATIONS IN CONTROLLED ENVIRONMENTS (CENTRAL OFFICE).  
 COMPLIANT PIN AREA : 0.5um MIN MATTE TIN.
- 3 GROUND PLATED THRU HOLE REQUIREMENTS:  
 FINISHED HOLE =  $\varnothing 0.37 \pm 0.05$   
 HOLE SIZE PRIOR TO PLATING =  $\varnothing 0.450 \pm 0.025$   
 COPPER THICKNESS = 0.025 MIN  
 IMMERSION TIN IF APPLICABLE = (0.00095)
- 4 SIGNAL PLATED THRU HOLE REQUIREMENTS:  
 FINISHED HOLE =  $\varnothing 0.29 \pm 0.05$   
 HOLE SIZE PRIOR TO PLATING =  $\varnothing 0.37 \pm 0.025$  (#79 DRILL)  
 COPPER THICKNESS = 0.025 MIN  
 IMMERSION TIN IF APPLICABLE = (0.00095)
- 5 SI VIA PLATED THRU HOLE REQUIREMENTS:  
 FINISHED HOLE = AS REQUIRED  
 HOLE SIZE PRIOR TO PLATING =  $\varnothing 0.254 \pm 0.025$   
 COPPER THICKNESS = 0.025 MIN  
 IMMERSION TIN IF APPLICABLE = (0.00095)
- 6 SIGNAL HOLES AND SI VIAS:  
 PTH DIMENSIONS APPLY TO THE TOP 1.00mm OF THE PCB THICKNESS FROM THE CONNECTOR MOUNTING SIDE.  
 GROUND HOLES:  
 PTH DIMENSIONS APPLY TO THE TOP 1.25mm OF THE PCB THICKNESS FROM THE CONNECTOR MOUNTING SIDE.
- 7 CONNECTOR MARKED WITH PART NUMBER, DATE CODE, AND "92 OHM" IN APPROXIMATE AREA SHOWN.
- 8 DATUMS AND BASIC DIMENSIONS ESTABLISHED BY CUSTOMER
- 9 APPLIES TO FINISHED HOLE DIAMETER
- 10 DATAMATRIX BARCODE MARKING IN THIS AREA.

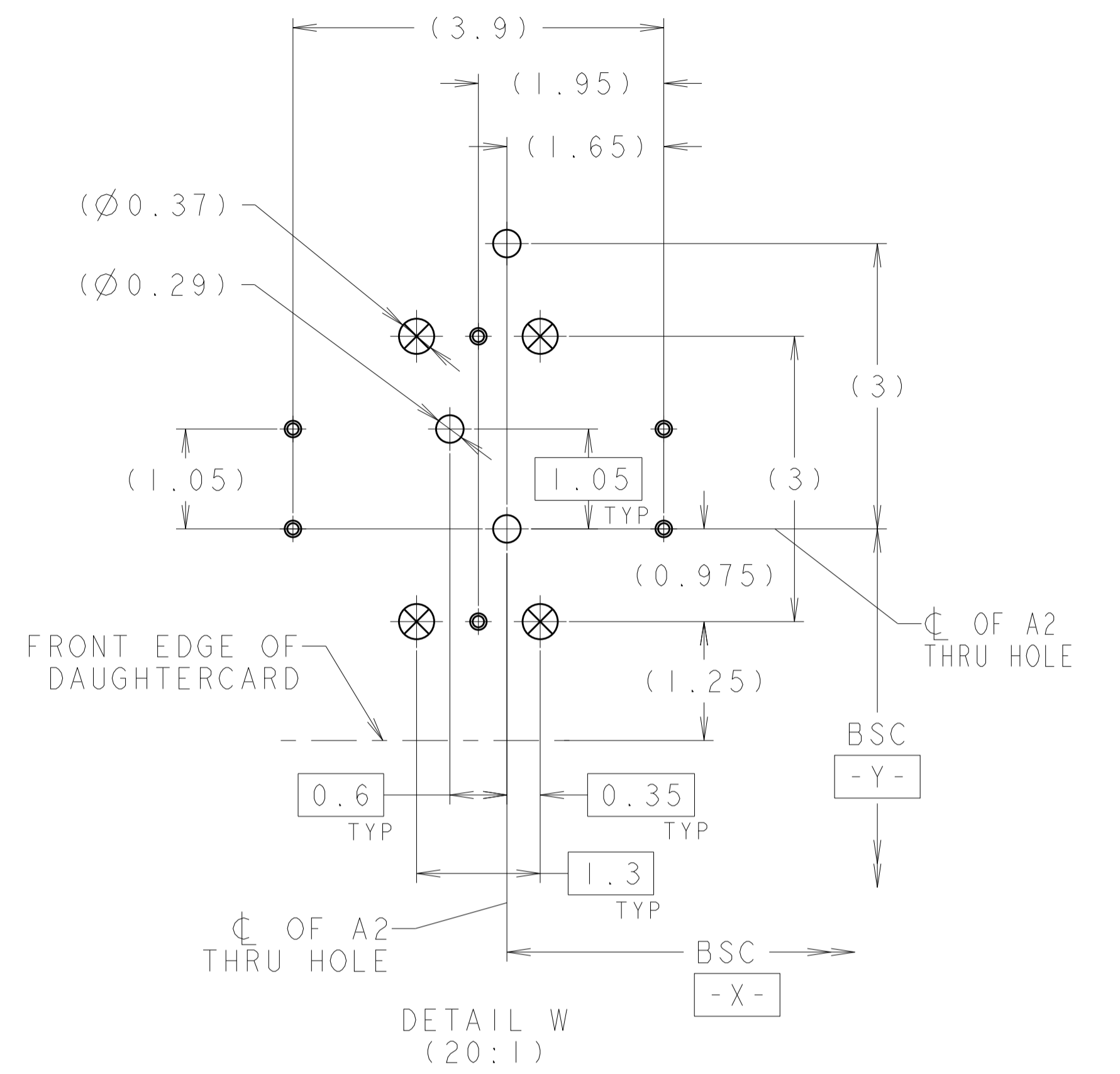
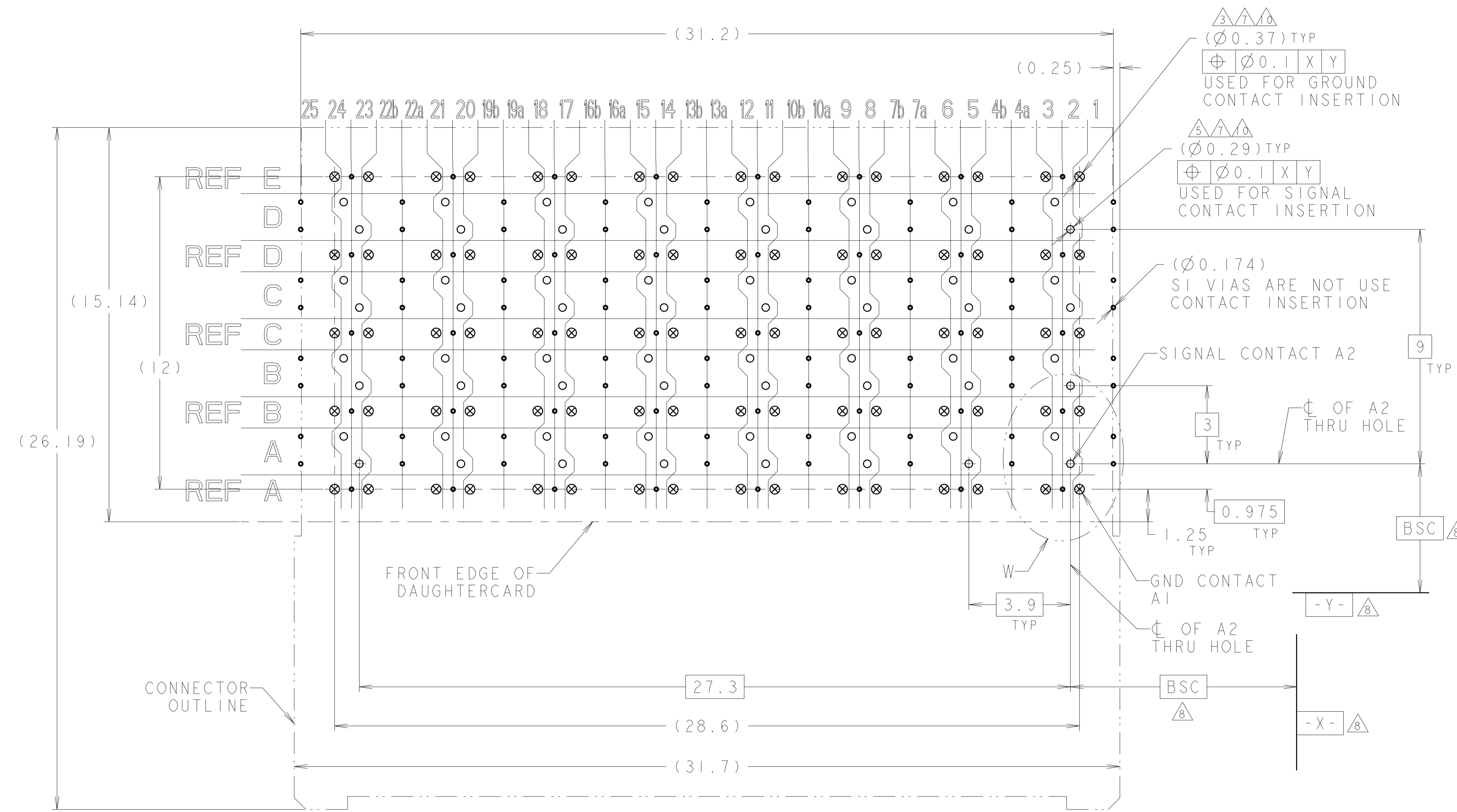


2329739-1  
 PART NO

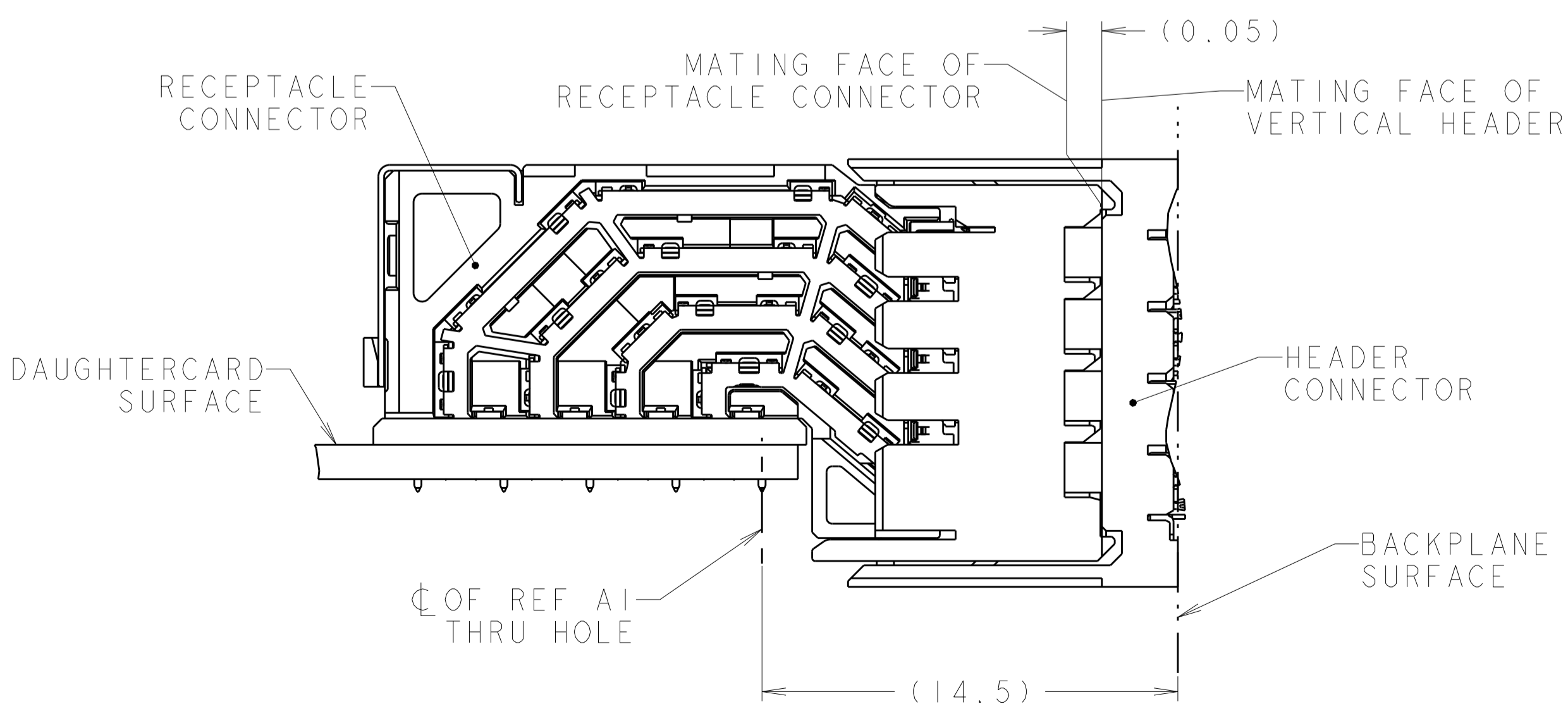
THIS DRAWING IS A CONTROLLED DOCUMENT.		OWN Y. KODAIRA 10JAN2018	TE Connectivity	
DIMENSIONS:		CHK M. IWASAKI 10JAN2018	NAME RIGHT ANGLE RECEPTACLE ASSEMBLY	
TOLERANCES UNLESS OTHERWISE SPECIFIED:		APVD T. MATSUDAIRA 10JAN2018	PRODUCT SPEC 108-140186	
mm			APPLICATION SPEC 114-32029	
0 PLC $\pm 0.3$			SIZE A1	
1 PLC $\pm 0.3$			CAGE CODE 0079	
2 PLC $\pm 0.3$			DRAWING NO 2329739	
3 PLC $\pm 0.3$			RESTRICTED TO	
4 PLC $\pm 0.3$			CUSTOMER DRAWING	
ANGLES $\pm 0.3$			SCALE 6:1	
FINISH $\pm 0.3$			SHEET 1 OF 2	
MATERIAL			REV A1	

REVISIONS				
REV	DATE	BY	CHK	APVD
1				
2				

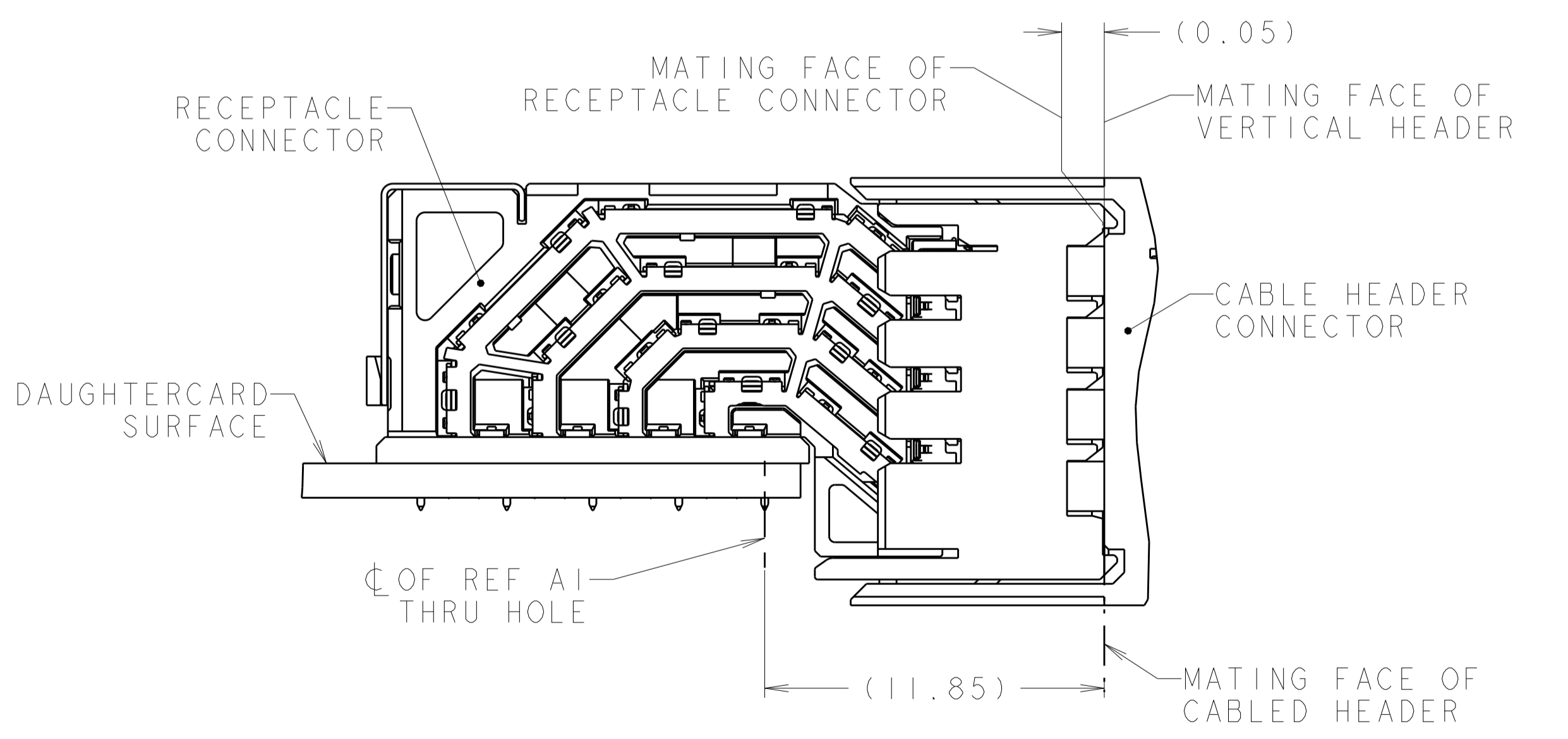
- = SIGNAL
- ⊗ = GROUND
- ⊙ = SIGNAL INTEGRITY VIA TO GROUND



RECOMMENDED PCB LAYOUT  
COMPONENT SIDE SHOWN  
SCALE 10:1



MIDPLANE APPLICATIONS  
MATED ASSEMBLY (PARTIAL VIEW)



CABLED HEADER APPLICATIONS  
MATED ASSEMBLY (PARTIAL VIEW)

THIS DRAWING IS A CONTROLLED DOCUMENT.		DWN	TE Connectivity	
DIMENSIONS: mm		CHK	NAME	
TOLERANCES UNLESS OTHERWISE SPECIFIED:		APVD	RIGHT ANGLE RECEPTACLE ASSEMBLY	
0 PLC	±0.3	PRODUCT SPEC	4 PAIR 8 COLUMN, 92 OHM,	
1 PLC	±0.3	APPLICATION SPEC	PAIR-IN-ROW, STRADA WHISPER R	
2 PLC	±0.3	WEIGHT	SIZE	CAGE CODE
3 PLC	±0.3	FINISH	A1	0079
4 PLC	±0.3		SCALE	1:1
ANGLES	±0.3°		SHEET	2 OF 2
			REV	A1