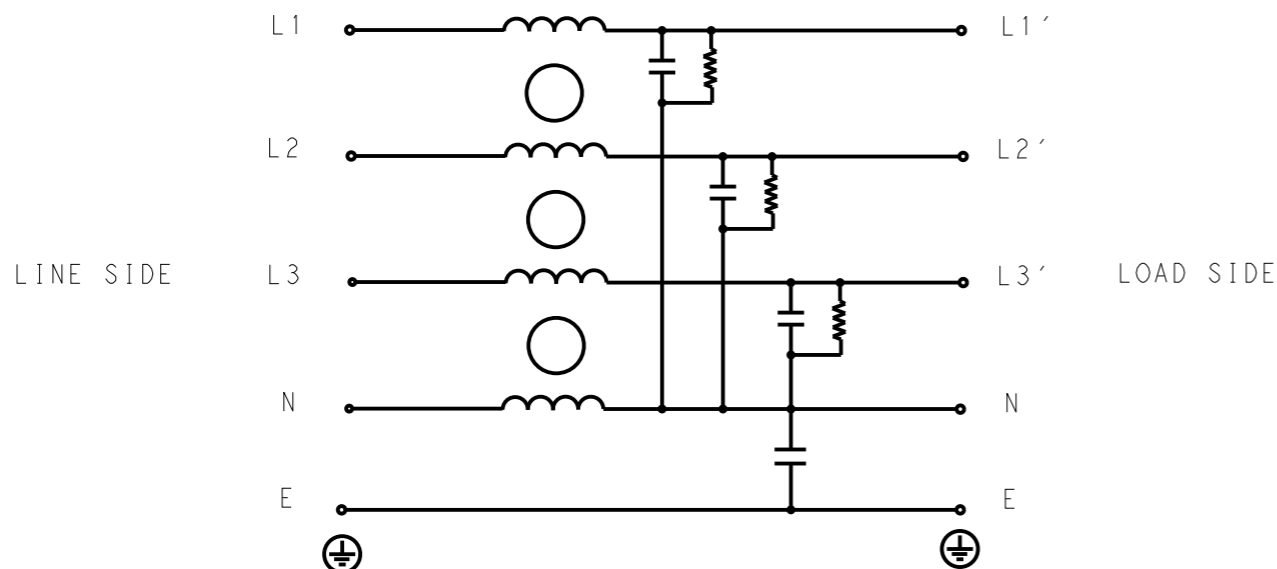


REVISIONS

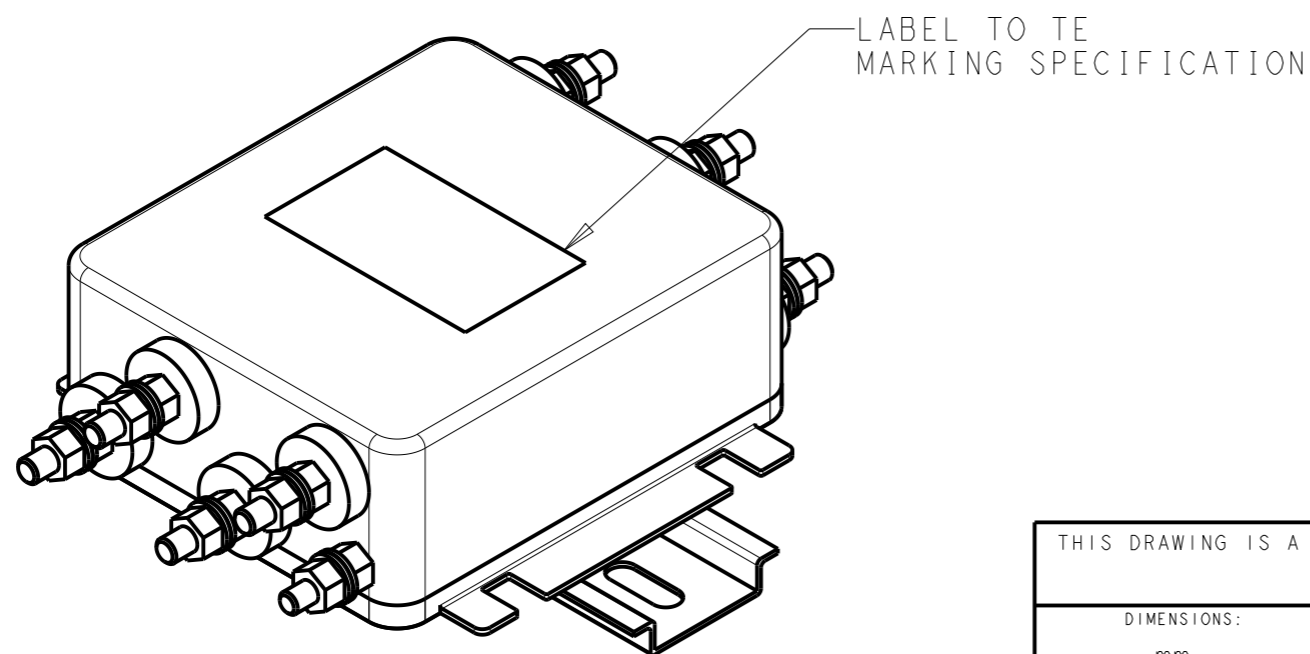
| P | LTR | DESCRIPTION | DATE | DWN | APVD |
|---|-----|-----------------|-----------|-----|------|
| | A | INITIAL RELEASE | 14APR2021 | SR | CB |
| | | | | | |
| | | | | | |



SCHEMATIC

TYPICAL INSERTION LOSS
COMMON MODE 50/50Ω; DIFFERENTIAL MODE 50/50Ω

| MHz | 0.01 | 0.05 | 0.15 | 0.5 | 1 | 3 | 5 | 10 | 30 |
|-----|------|------|------|-----|----|----|----|----|----|
| CM | 4 | 4 | 9 | 20 | 38 | 36 | 46 | 30 | 23 |
| DM | 6 | 8 | 12 | 16 | 30 | 33 | 40 | 38 | 47 |



LABEL TO TE MARKING SPECIFICATION

SAFETY ORGANIZATIONS

THIS FILTER WILL BE FORMALLY RECOGNIZED, CERTIFIED OR APPROVED BY THE LISTED AGENCY. THEREFORE, ALL TEST/REQUIREMENTS SPECIFIED IN THE LATEST REVISION OF THE FOLLOWING AGENCY STANDARDS WILL BE MET:

UL APPROVED 15A 440V 50Hz/60Hz 40°C
 CSA APPROVED 15A 440V 50Hz/60Hz 40°C

OPERATING SPECIFICATION

LINE CURRENT/VOLTAGE: 15A, 440VAC
LINE FREQUENCY: 50/60Hz

MAXIMUM LEAKAGE CURRENT: 3mA @ 230VAC, 50Hz

OPERATING AMBIENT TEMPERATURE RANGE @ RATED CURRENT: -25°C TO +40°C

IN AN AMBIENT, T_a, HIGHER THAN 40°C, THE MAXIMUM OPERATING CURRENT, I_o, IS AS FOLLOWS:

$$I_o = I_r \sqrt{\frac{85 - T_a}{45}}$$

RELIABILITY SPECIFICATIONS

STORAGE TEMPERATURE: -40°C TO +85°C
HUMIDITY: 21 DAYS @ 40°C AND 95% RH

TEST SPECIFICATIONS

INDUCTANCE, NOMINAL: 0.3mH

CAPACITANCE @ 1kHz

NEUTRAL TO GROUND, NOMINAL: 22nF
LINE TO NEUTRAL, NOMINAL: 100nF

DISCHARGE RESISTOR

L/G I.R. 2MΩ 1W
 L/L I.R. 2MΩ 1W
 L/N I.R. 1MΩ 1W
 N/G I.R. 680KΩ 1W
 IR (NO DISCHARGE RESISTOR) 20°C, 50% RH AND 100VDC, MIN: 6MΩ

RECOMMENDED RECEIVING INSPECITON HIPOT

LINE TO GROUND FOR 1 MINUTE: 2632VDC
 LINE TO LINE FOR 1 MINUTE: 1892VDC
 LINE TO NEUTRAL FOR 1 MINUTE: 1093VDC

FILTER APPROVAL

THE BEST WAY TO SELECT AND QUALIFY A FILTER IS FOR YOUR ENGINEERING TO TEST THE UNIT IN YOUR EQUIPMENT.

| | | | | |
|--|--|----------------------------|--|--|
| THIS DRAWING IS A CONTROLLED DOCUMENT. | | DWN SUPREETH R 14APR2021 | | |
| | | CHK CHRIS BOLLE 14APR2021 | | |
| DIMENSIONS: mm | | APVD CHRIS BOLLE 14APR2021 | NAME POWER LINE FILTER FOR DIN RAIL 35 INSTALLATION 15KES6AFPWDM | |
| TOLERANCES UNLESS OTHERWISE SPECIFIED: | | PRODUCT SPEC - | RESTRICTED TO - | |
| 0 PLC ±- | | APPLICATION SPEC - | SIZE A300779 CAGE CODE C-3-1609966-4 | |
| 1 PLC ±0.5 | | WEIGHT - | SCALE 3:4 SHEET 1 OF 2 REV A | |
| 2 PLC ±0.40 | | CUSTOMER DRAWING | | |
| 3 PLC ±0.130 | | | | |
| 4 PLC ±0.0500 | | | | |
| ANGLES ±- | | | | |
| MATERIAL - | | | | |
| FINISH - | | | | |

© 2021 TE Connectivity. All Rights Reserved.

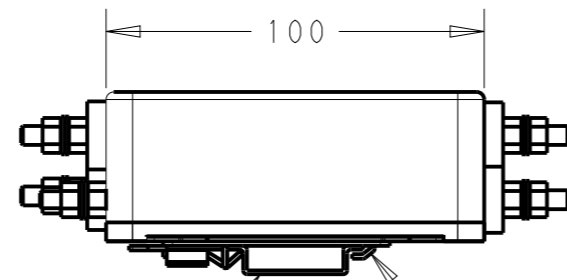
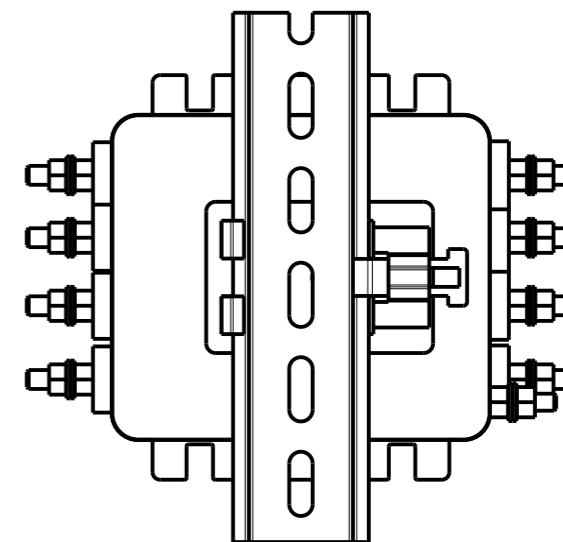
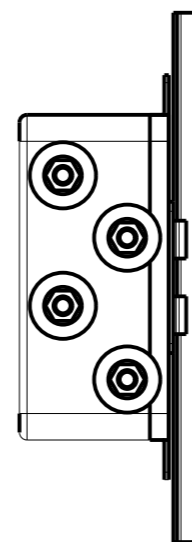
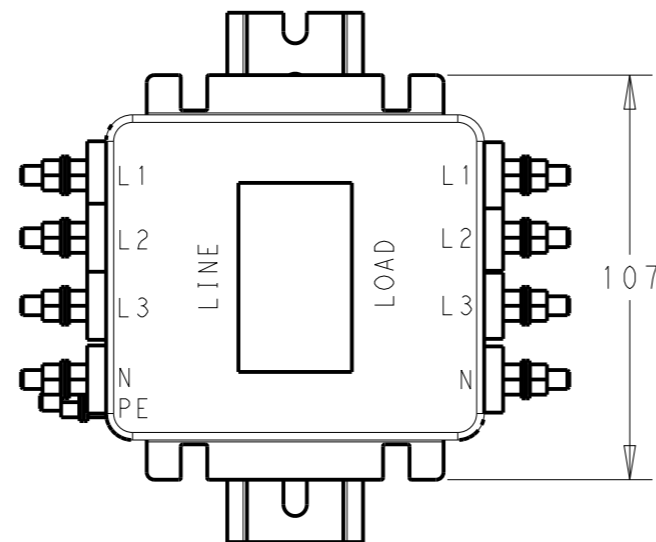
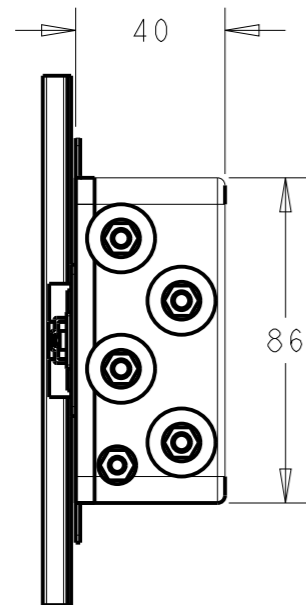
NOTE 1 GROUND CONNECTION:
FOR ELECTRICAL SAFETY AND FILTER PERFORMANCE
UNIT MUST HAVE A GOOD GROUND CONNECTION.
TORQUE OUTER TERMINAL /GROUND NUTS: 2Nm

NOTE 2 INPUT OUTPUT CONNECTION TERMINAL
AWG SIZE: XXX
THREADED BOLT SIZE FOR TERMINAL: M5
THREADED BOLT SIZE FOR GROUND: M5

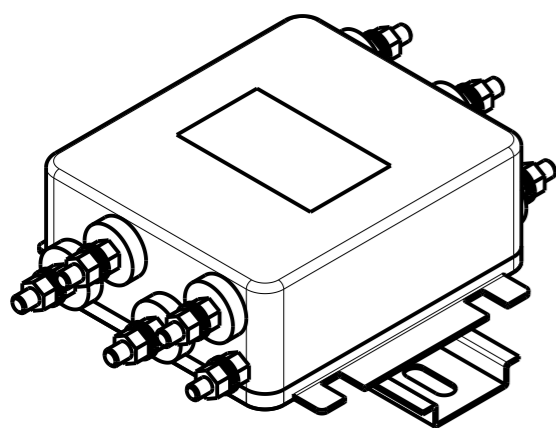
NOTE 3 SUPPLIED WITH DIN RAIL BRACKET.

NOTE 4 DRAWING SHOWS DIN RAIL FOR
REFERENCE ONLY.

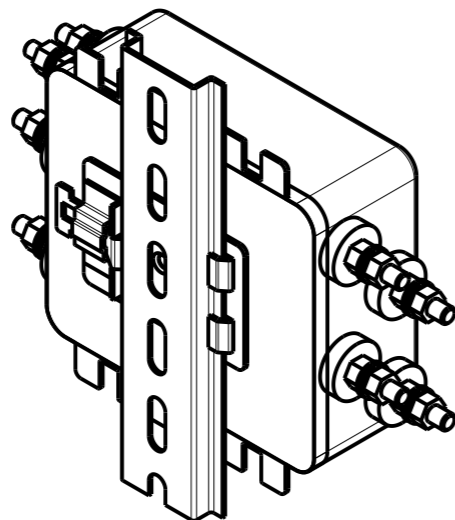
| REVISIONS | | | | | |
|-----------|-----|-------------|------|-----|------|
| P | LTR | DESCRIPTION | DATE | DWN | APVD |
| | | SEE SHEET 1 | | | |
| | | | | | |
| | | | | | |



DIN RAIL BRACKET DIN 35 BRACKET



FRONT SIDE



REAR SIDE

| | | | | | |
|--|--|--|---|-----------------|--------------------------|
| THIS DRAWING IS A CONTROLLED DOCUMENT. | | DWN SUPREETH R 14APR2021 | | | |
| | | CHK CHRIS BOLLE 14APR2021 | | | |
| | | APVD CHRIS BOLLE 14APR2021 | | | |
| | | PRODUCT SPEC | | | |
| DIMENSIONS: mm | | TOLERANCES UNLESS OTHERWISE SPECIFIED: | NAME POWER LINE FILTER FOR DIN RAIL 35 INSTALLATION 15KES6AFPWDM | | |
| | | 0 PLC ±- | SIZE A3 | CAGE CODE 00779 | DRAWING NO C-3-1609966-4 |
| MATERIAL - | | 1 PLC ±0.5 | RESTRICTED TO - | | |
| | | 2 PLC ±0.40 | SCALE 1:2 SHEET 2 OF 2 REV A | | |
| | | 3 PLC ±0.130 | | | |
| | | 4 PLC ±0.0500 | | | |
| | | ANGLES ±- | | | |
| MATERIAL - | | FINISH - | CUSTOMER DRAWING | | |
| | | | | | |