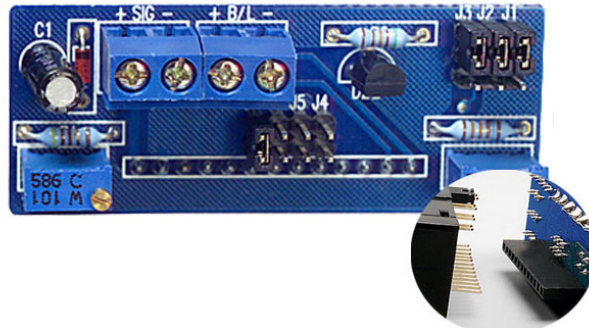
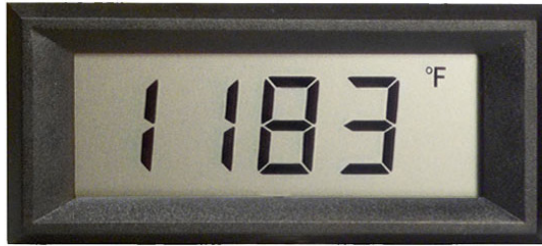


EPIC SERIES



### Features:

- ◇ Low-cost, high-performance replacement for many OEM DPMs
- ◇ Optional RED, GREEN or AMBER backlighting
- ◇ Snap-in bezel mount eliminates mounting hardware
- ◇ Resistant to RF and EMI
- ◇ 3½ digits with high-contrast LCD
- ◇ 4-20 mA loop powered input
- ◇ User selectable, displayed engineering units

### Specifications:

<b>Display:</b>	Digits:	3 ½ digits (±1999 counts)
	Type:	0.45" (11.4 mm) 7 segment LCD
<b>Backlighting:</b>		Optional Red Negative (red numbers/black background) Optional Green Negative (green numbers/black background) Optional Amber Negative (amber numbers/black background) Optional Green Positive (black numbers/green background)
	Polarity:	automatic, "-" displayed
	Annunciators:	°F, °C, PSI, % , user selectable, or V, A, KW, PF
	Decimal Points:	3 position, user selectable
	Overrange:	three lower order digits blank for inputs >1999 & < -1999
<b>Inputs:</b>	Ranges:	4-20 mA DC
	Configuration:	bipolar differential
	Impedance:	300Ω nominal
<b>Performance:</b>	Accuracy:	±(0.1% fs + 2 count)
	Conversion Rate:	3 per second
	Normal Mode Rejection:	>30 db @ 60 Hz
	Common Mode Range:	±1 VDC max
	Common Mode Rej.:	>86 dB
	Adjustments:	span (gain) and zero (offset)
	Warmup:	10 minutes typical
	Temperature Coefficient:	± 100 ppm per °C typical
<b>Environment:</b>	Operating Range:	0 to 50 °C
	Storage Range:	-20 to 70 °C
<b>Power Supply:</b>		powered by the milliamp control loop
	Optional Backlight:	24 VDC at 35 mA typical
<b>Mounting:</b>		snap-in bezel mount
<b>Connection:</b>		2 screw terminal (4 with backlight)

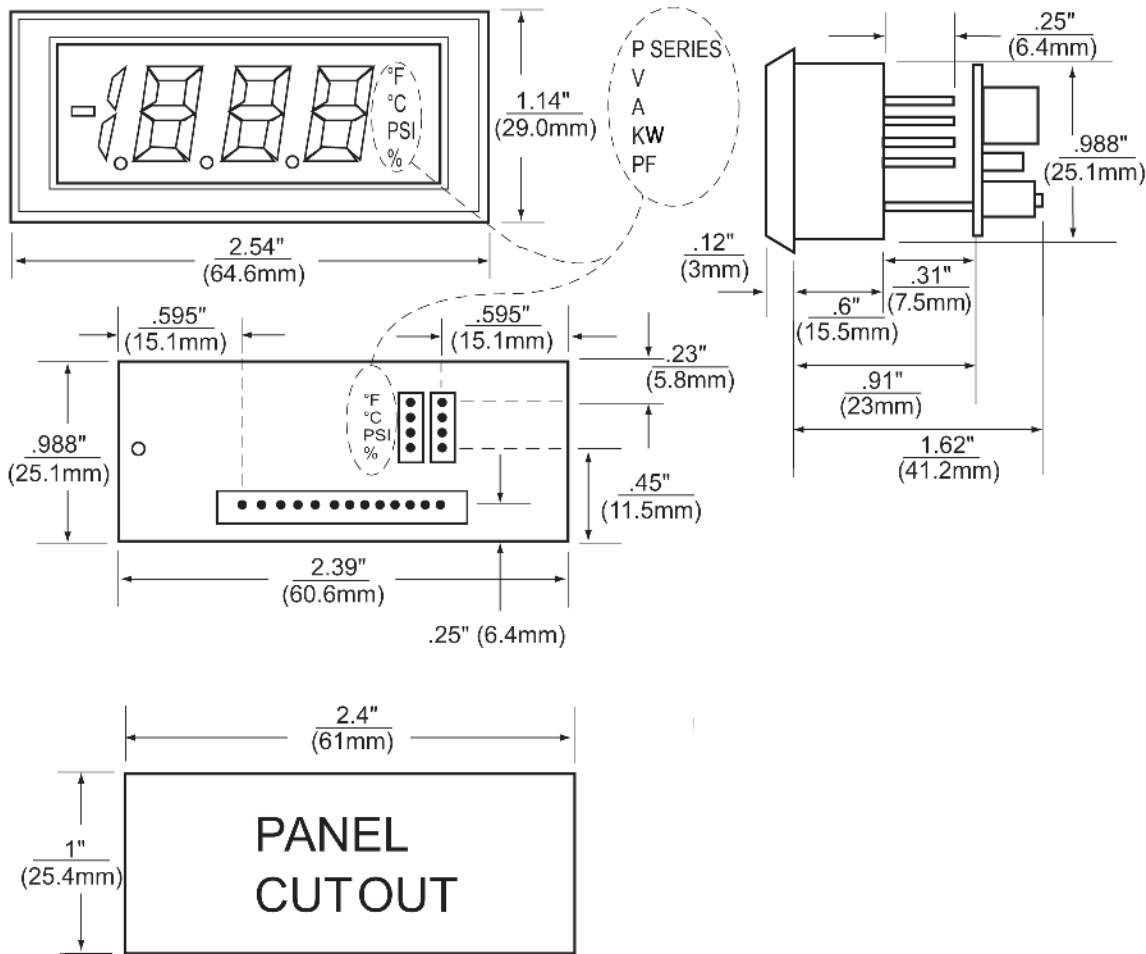
### Ordering Information:

PART NUMBER	BACKLIGHT COLOR	BACKLIGHT POWER
DK191*	NO BACKLIGHT	NONE
DK192*	NEG AMBER	24VDC
DK193*	NEG GREEN	24VDC
DK194*	NEG RED	24VDC
DK195*	POS GREEN	24VDC

\*Add (P) for Power Engineering Units V, A, KW, PF

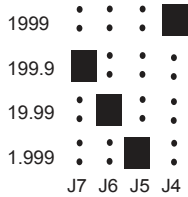
PW2-24	Regulated 120V AC to 24V DC Power Supply
PW1.0	24V AC to adjustable DC output
CPW1.5	24V AC to adjustable DC output
CVC	Calibrator

### Dimensions



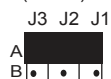
### Jumper Selection & Wiring

#### 1. DECIMAL SELECTION:

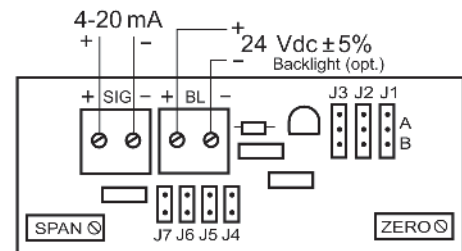
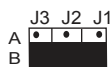


#### 2. J1, J2, J3 SELECTION:

**IF:** OFFSET (ZERO) IS 0 or  
 OFFSET (ZERO) > 0 and GAIN (SPAN) ÷ OFFSET (ZERO) ≥ 5



**IF:** OFFSET (ZERO) > 0 and GAIN (SPAN) ÷ OFFSET (ZERO) < 5



WIRING