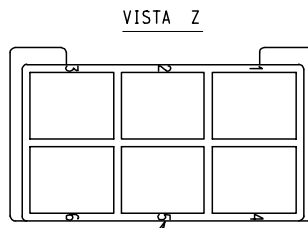
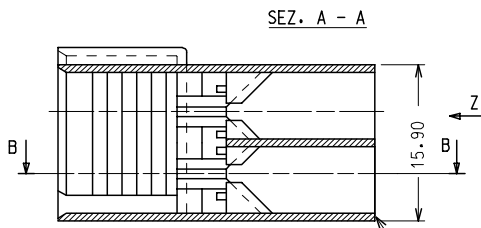
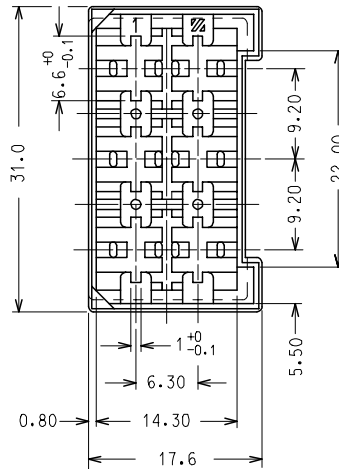
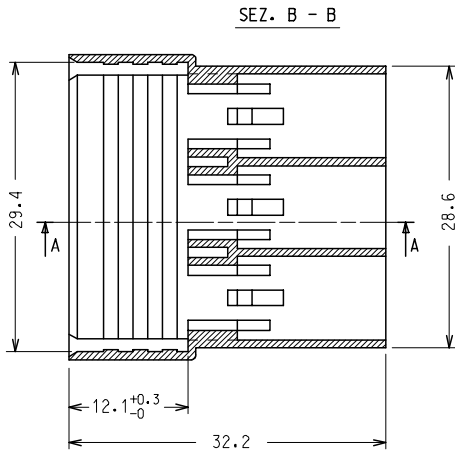


10 9 8 7 6 5 4 3 2 1



Numero riferimento vie



CODICE P/N	COLORE COLOR	MATERIALE MATERIAL
94090 - 4190	NEUTRO / NEUTRAL	PA 6.6 UL 94 V2
94090 - 4191	NERO / BLACK	
94090 - 4192	ROSSO / RED	
94090 - 4194	NEUTRO / NEUTRAL	PA 6.6 GWT 750 °C IEC 60335-1 TEST METHOD IEC 60695-2-11

STD DESCR: HSG FOR 6.3 M TERM 6 CKY ... (COLOR)

EC NO: Z2006-0065 DRWN: SANTESS 2005/10/26 CHKD: SANDANO 2005/10/26 APPR: GZUIN 2005/10/26	QUALITY SYMBOLS ▽=0 ▽C=0	GENERAL TOLERANCES (UNLESS SPECIFIED)		DIMENSION STYLE MM ONLY		SCALE 2:1	DESIGN UNITS METRIC	FIRST ANGLE PROJECTION			
				mm	INCH	DRAWN BY L.SANTESSO		TITLE 6 WAY HOUSING FOR 6.3 X 0.8 TABS			
				4 PLACES ± ---	± ---	DATE 1991/09/05		MOLEX INCORPORATED SD-94090-026			
				3 PLACES ± ---	± ---	CHECKED BY DATE					
		2 PLACES ± 0.1	± ---	APPROVED BY M.PREVIATO		DATE 1991/09/05		SHEET NO. 1 OF 1			
		1 PLACE ± 0.2	± ---	MATERIAL NO.		DOCUMENT NO.					
		ANGULAR ± 2 °		DRAFT WHERE APPLICABLE MUST REMAIN WITHIN DIMENSIONS		SEE TABLE					
B1				SIZE A3		THIS DRAWING CONTAINS INFORMATION THAT IS PROPRIETARY TO MOLEX INCORPORATED AND SHOULD NOT BE USED WITHOUT WRITTEN PERMISSION					

9 8 7 6 5 4 3 2 1