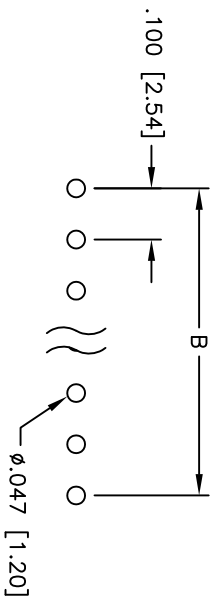
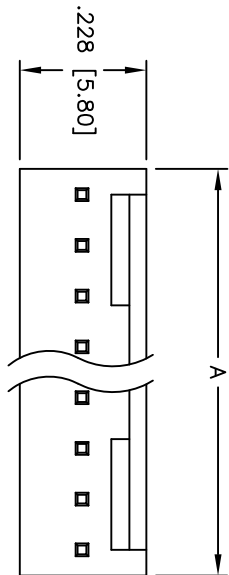
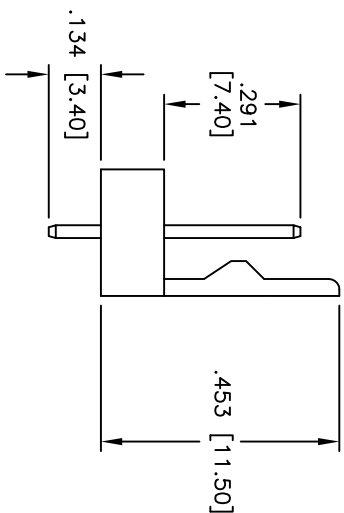
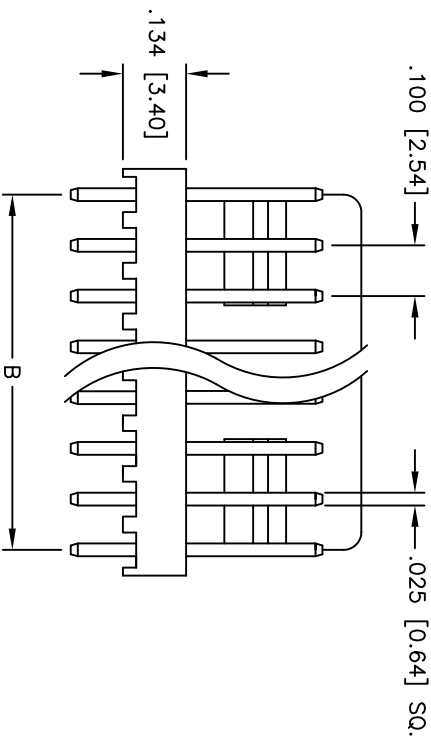


APPROVED: \_\_\_\_\_  
 DATE: \_\_\_\_\_ TITLE: \_\_\_\_\_

| Rev | AWO # | Description  | Date    | Appr |
|-----|-------|--------------|---------|------|
| -   |       | RELEASED     | 4/8/05  |      |
| A   |       | REVISED DIM. | 8/11/11 |      |



PCB LAYOUT



**SPECIFICATIONS:**

- Material: Insulator: Nylon, rated UL 94V-2
- Insulator color: Ivory
- Contacts: Brass
- Plating: Tin over Copper underplate overall
- Electrical: Operating voltage: 250 VAC max
- Current rating: 3 Amps max
- Insulation resistance: 1,000 Mohms min
- Dielectric withstanding voltage: 1,000 VAC for 1 minute
- Temperature Rating: Operating temperature: -25°C to +85°C
- Environmental: Lead free, RoHS compliant

Positions: 2 thru 20  
 A = .100 [2.54] x No. of Positions  
 B = .100 [2.54] x No. of Spaces

**ADAM TECH**

909 Rahway Avenue, Union, NJ 07083  
 Phone: 908-687-5000 Fax: 908-687-5710

TITLE: .100 [2.54] LOCKING HEADER  
 STRAIGHT, PCB

|  |              |
|--|--------------|
| UNLESS OTHERWISE SPECIFIED<br>ALL DIMENSIONS ARE INCHES [MM] |              |
| TOLERANCES: EXCEPT AS NOTED                                  |              |
| INCHES   | HOLES        |
| .X ± .10   | ØXX ± .10    |
| .XX ± .020   | ØXXX ± .015  |
| .XXX ± .015  | ØXXXX ± .010 |
| APPROVALS  | DATE         |
| DRAWN  | SS           |
| CHECKED  |              |
| APPROVED   |              |

|        |           |              |
|--------|-----------|--------------|
| SIZE   | PART NO.  | REV.         |
| X      | LHA-XX-TS | A            |
| REF:   | S00016T   | SHEET 1 OF 1 |
| SCALE: | NIS       |              |

