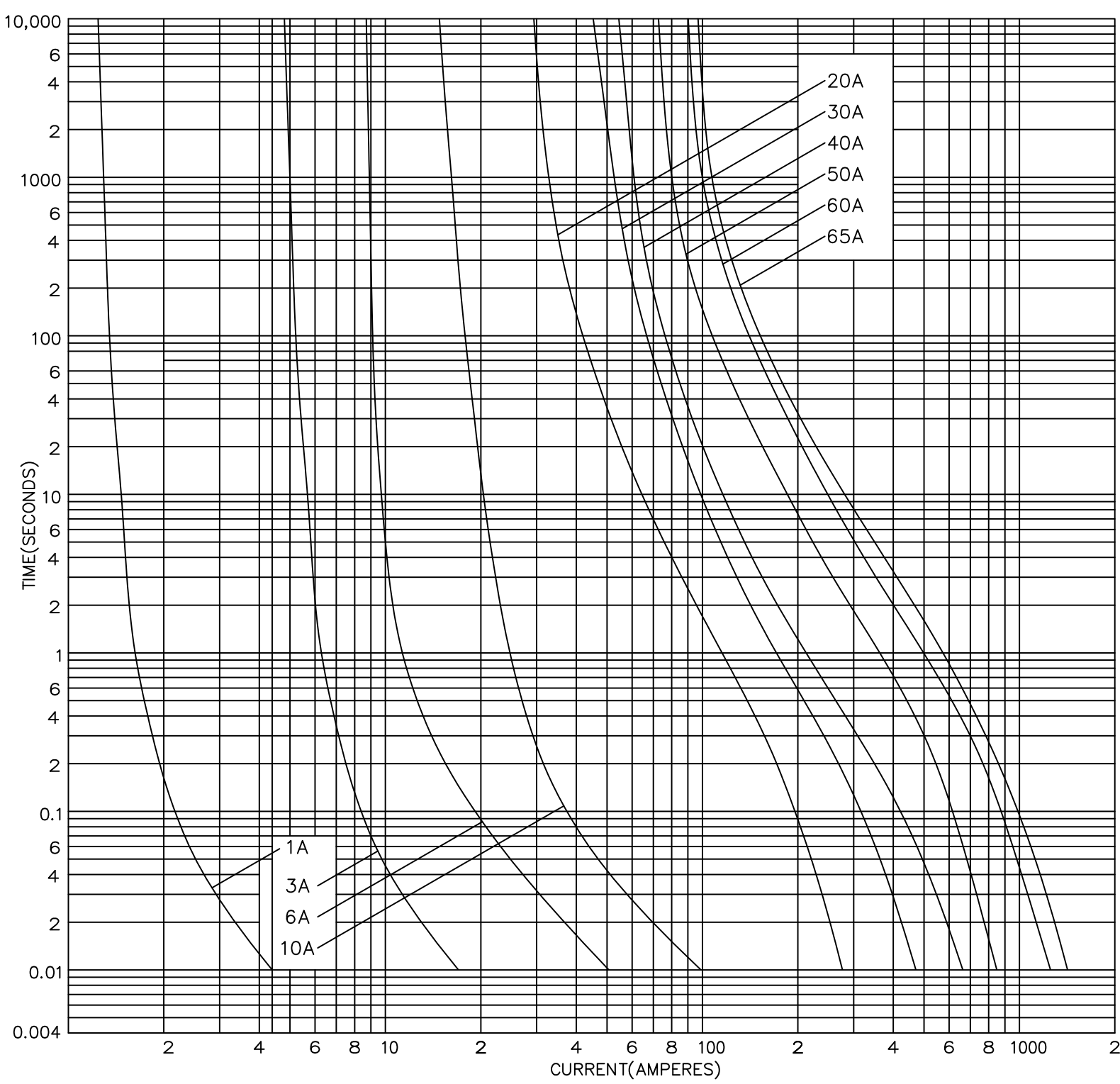
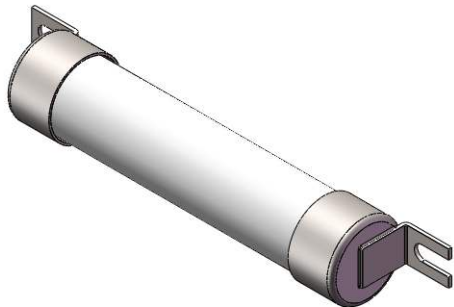
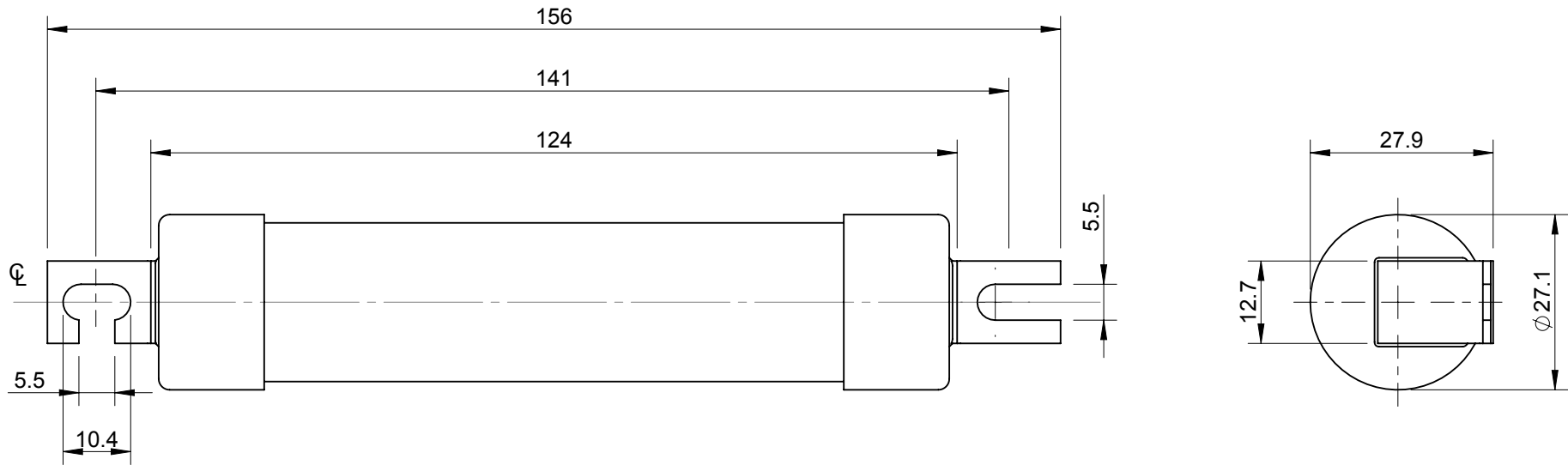

 TECHNICAL DATA	RATING AND TYPE	I ² t (AMPERE ² SECONDS)			NOM. WATTS LOSS
		PRE-ARCING	TOTAL AT 1000Vd.c	TOTAL AT 1200Va.c	
Bussmann	1KTH	0.2	0.7	1	1.7
<u>RANGE</u> TRACTION	3KTH	3.1	9.3	10	3.9
<u>REF.</u> KTH	6KTH	27	81	86	6.4
<u>CURRENT RATING</u>	10KTH	110	320	350	9.0
	20KTH	675	1,550	1,650	5.6
	30KTH	1,850	4,300	4,600	7.1
3-65 AMPS	40KTH	3,650	8,500	9,000	10.0
<u>SPECIFICATION</u>	50KTH	7,500	17,500	18,000	9.0
BRITISH RAIL	60KTH	14,500	34,000	36,000	11.0
<u>DRG. No.</u> E5785108	65KTH	19,000	44,000	47,000	10.0
Rev B, Aug 00					
<u>DATE</u> APRIL 1987					



ITEM No. 5778861

REV	DESCRIPTION	BY	DATE	CHANGE NO.
C	NOMINAL DIMENSIONS UPDATED	JW	10/11/2015	BUEB19366



MODEL VERSION: 00 MODEL SOURCE FILE: 5778861	UNLESS OTHERWISE SPECIFIED, ALL DIMENSIONS ARE IN MILLIMETERS. TOLERANCES UNLESS OTHERWISE SPECIFIED: GENERAL ± 0.4mm ANGULAR ± 1°	OUTLINE FOR KTH FUSE LINKS (3-65A)					 <i>Powering Business Worldwide</i>
	UNCONTROLLED COPY	DRAWN BY: RAG	DATE: 14/06/2013	SCALE: NTS	ANGLE: THIRD	SIZE: A4	
	THIS DRAWING IS CONFIDENTIAL AND THE COPYRIGHT OF EATON AND MUST NOT BE COPIED OR PASSED ON TO A THIRD PARTY WITHOUT WRITTEN CONSENT	MATERIAL: VARIOUS		FINISH: NONE		DWG NO: 5778861	
						REV: C	SHEET: 1 OF 1