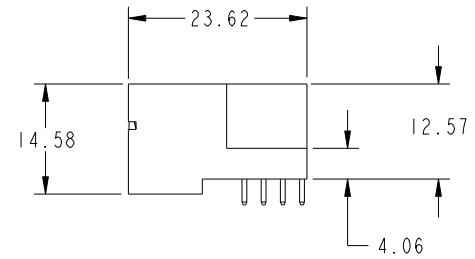
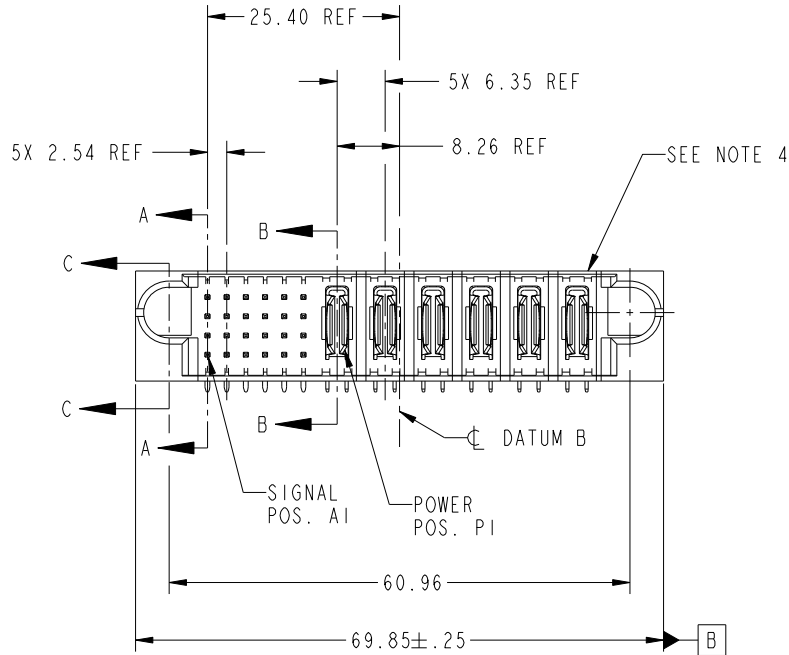
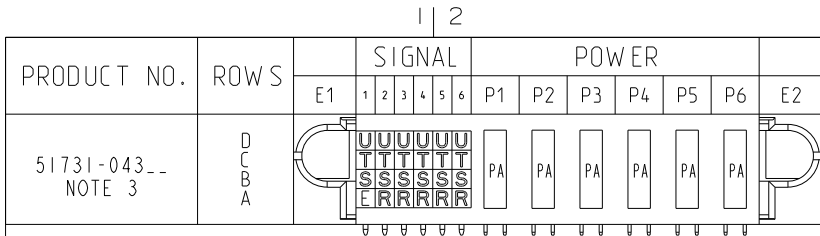


Tous droits strictement reserves. Reproduction ou communication a des tiers interdite sous quelque forme que ce soit sans autorisation ecrite du proprietaire. Propriete de c.FCI. Droits de reproduction FCI.

All rights strictly reserved. Reproduction or issue to third parties in any form whatever is not permitted without written authority from the proprietor. Property of FCI. Copyright FCI.



CONFIDENTIAL

CODE	DIM "M" MATING LENGTH	CONTACT TYPE
U	[6.86]	SIGNAL
T	[6.86]	SIGNAL
S	[6.86]	SIGNAL
R	[6.86]	SIGNAL
PA	[N/A]	POWER
E	[5.59]	SIGNAL

mat'l code				SEE NOTE		tolerances unless otherwise specified		CUSTOMER	
ltr	ecn no.	dr	date	linear	0.X ± 0.3	COPY			
A	DG07-0051	RYAN	02/02/07	0.XX ± 0.13	projection				
B	DG08-0272	WD	09/28/08	0.XXX ± 0.051	angles	0° ± 2°			
				dr	RYAN YUAN	02/02/07			
				enrg	RYAN YUAN	02/07/07			
				chr	BEER FU	02/02/07			
				appd	JOSEPH HSIA	02/02/07			
sheet index	revision sheet	B 1	B 2	B 3	B 4				

product family		PwrBlade		code
size	dwg no	51731-043		213
				sheet 1 of 4

title		24S + 6P		RIGHT ANGLE SOLDER HEADER	
product family		PwrBlade		code	213
size	dwg no	51731-043		sheet 1 of 4	

cage code 28556

Pro/E

PDM: Rev:B

STATUS: **Released**

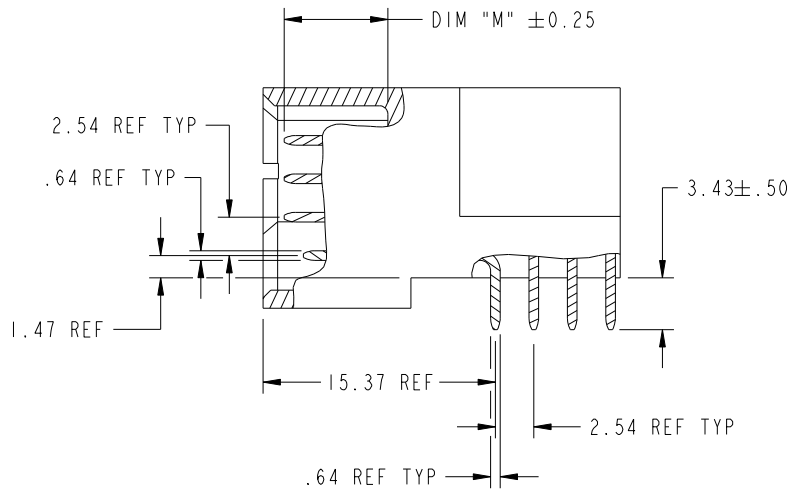
Printed: Dec 20, 2010

Tous droits strictement réservés. Reproduction ou communication à des tiers interdite sous quelque forme que ce soit sans autorisation écrite du propriétaire. Propriété de c.FCI. Droits de reproduction FCI.

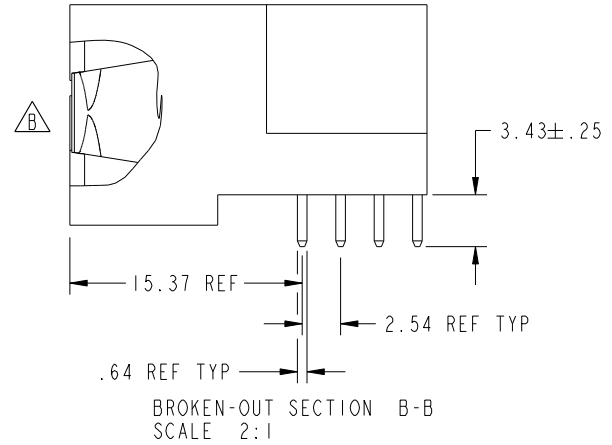
All rights strictly reserved. Reproduction or issue to third parties in any form whatever is not permitted without written authority from the proprietor. Property of FCI. Copyright FCI.



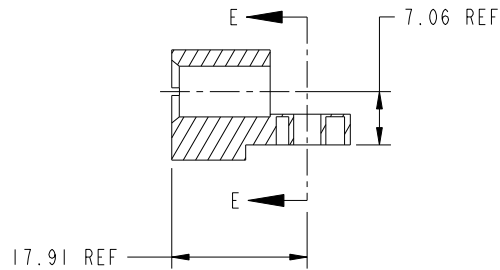
PRODUCT NUMBER
51731-043--
NOTE: 3



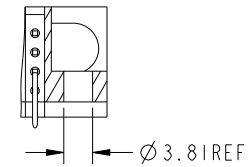
BROKEN-OUT SECTION A-A
SCALE 2:1



BROKEN-OUT SECTION B-B
SCALE 2:1



SECTION C-C



PARTIAL SECTION E-E

CONFIDENTIAL

mat'l code		SEE NOTE		tolerances unless otherwise specified		CUSTOMER		 www.fciconnect.com	
ltr	ecn no.	dr	date	linear	0.X ±0.3	COPY		title	
B					0.XX ±0.13	projection		24S + 6P	
				angles	0.XXX ±0.051			RIGHT ANGLE SOLDER HEADER	
				dr	0° ±2°			product family	
				engr		MM		PwrBlade	
				chr	RYAN YUAN 02/02/07	scale		code	
				appd	RYAN YUAN 02/07/07	1:1		213	
					BEER FU 02/02/07			sheet	
					JOSEPH HSIA 02/02/07			2 of 4	
sheet index	revision sheet							cage code	
								22506	

B

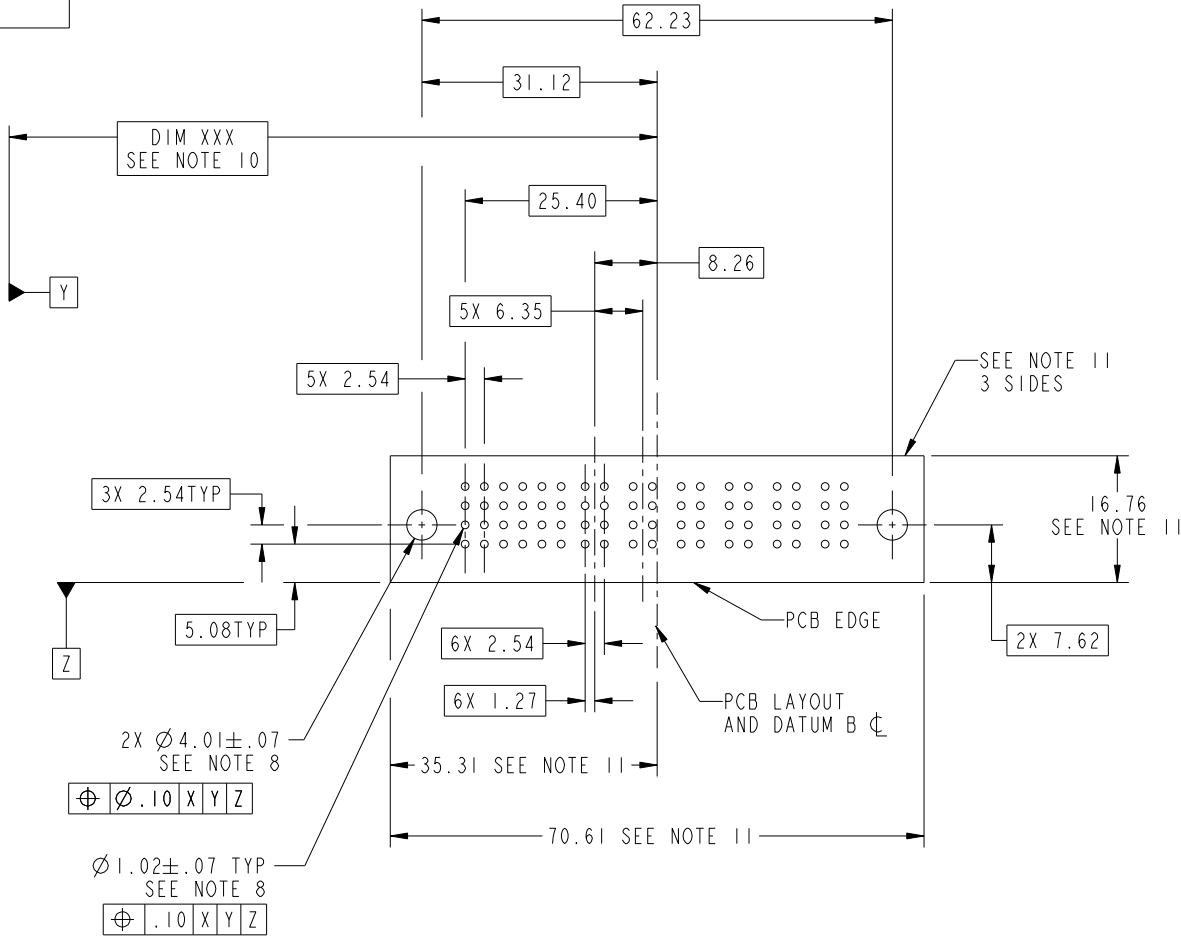
Tous droits strictement reserves. Reproduction ou communication a des tiers interdite sous quelque forme que ce soit sans autorisation écrite du propriétaire. Propriete de c.FCI. Droits de reproduction FCI.

All rights strictly reserved. Reproduction or issue to third parties in any form whatever is not permitted without written authority from the proprietor. Property of FCI. Copyright FCI.



PRODUCT NUMBER

51731-043--
NOTE: 3



RECOMMENDED PCB LAYOUT

CONFIDENTIAL

mat'l code		SEE NOTE		tolerances unless otherwise specified		CUSTOMER		 www.fciconnect.com	
ltr	ecn no.	dr	date	linear	0.X ± 0.3	COPY		title	
B					0.XX ± 0.13	projection		24S + 6P	
				angles	0.XXX ± 0.051			RIGHT ANGLE SOLDER HEADER	
				dr	0° ± 2°	MM		product family	
				enrg	RYAN YUAN 02/02/07	scale		PwrBlade	
				chr	RYAN YUAN 02/07/07	1:1		code	
				appd	BEER FU 02/02/07			213	
					JOSEPH HSIA 02/02/07			sheet	
sheet index	revision sheet							3 of 4	
								size	
								A 51731-043	

cage code 28506

Pro/E

PDM: Rev: B

STATUS: Released

Printed: Dec 20, 2010

Tous droits strictement réservés. Reproduction ou communication a des tiers interdite sous quelque forme que ce soit sans autorisation écrite du propriétaire. Propriété de c.FCI. Droits de reproduction FCI.

All rights strictly reserved. Reproduction or issue to third parties in any form whatever is not permitted without written authority from the proprietor. Property of FCI. Copyright FCI.



1 | 2

3 |

4

PRODUCT NUMBER
51731-043--
NOTE: 3

NOTES:

1. DIMENSIONS AND TOLERANCES ARE IN ACCORDANCE WITH ASME Y14.5M, 1994 UNLESS OTHERWISE SPECIFIED.

CONNECTOR NOTES:

- ② HOUSING MATERIAL: UL 94 V-0 GLASS FILLED HIGH-TEMP THERMOPLASTIC
POWER CONTACT MATERIAL: COPPER ALLOY
SIGNAL PIN MATERIAL: COPPER ALLOY
- ⚠ 3. SEE ITEM 1 & 2 IN PRINT 10064183 FOR PLATING SPEC OF 51731-043 AND 51731-043LF RESPECTIVELY.
- ④ MANUFACTURER'S NAME, P/N, AND DATE CODE TO APPEAR ON THIS SURFACE.
- 5. PRODUCT SPECIFICATION GS-12-149.
APPLICATION SPECIFICATION BUS-20-067.
- 6. PACKAGED IN TRAYS.
- PCB NOTES:
- 7. ALL HOLE DIAMETERS ARE FINISHED HOLE SIZE.
- ⑧ MOUNTING HOLES, WHERE APPLICABLE, ARE UNPLATED.
- ⑨ $\varnothing 1.151 \pm 0.025$ DRILLED HOLES PLATED WITH
0.008 MIN SnPb OR Sn OVER 0.03 TO 0.08 Cu PLATING TO ACHIEVE $\varnothing 1.02 \pm .07$ HOLE.
- ⑩ "DIM XXX" TO BE DETERMINED BY THE CUSTOMER.
- ⑪ CONNECTOR KEEP-OUT ZONE.
- 12. A ⚠ SYMBOL WILL BE NEXT TO ANY DIMENSION, VIEW, OR NOTE WHICH HAS BEEN MODIFIED WITH THE CURRENT DRAWING REVISION.

CONFIDENTIAL

mat'l code		SEE NOTE		tolerances unless otherwise specified		CUSTOMER		FCI		www.fciconnect.com	
ltr	ecn no.	dr	date	linear	0.X ±0.3	COPY				title	
B					0.XX ±0.13	projection				24S + 6P	
				angles	0.XXX ±0.051					RIGHT ANGLE SOLDER HEADER	
				dr	RYAN YUAN 02/02/07	MM		product family		code	
				enrg	RYAN YUAN 02/07/07			PwrBlade		213	
				chr	BEER FU 02/02/07	scale		size		sheet	
				appd	JOSEPH HSIA 02/02/07	1:1		A 51731-043		4 of 4	
sheet index	revision sheet										

1 | 2

Pro/E

PDM: Rev:B

STAT: Released

Printed: Dec 20, 2010

cage code 2856

4