

DIMENSIONS IN INCHES (MILLIMETERS)  
DO NOT SCALE DRAWING .....

Dwg. No.

CWR-171-XX-0021

**NOTES:**

1. Dimensions are in inches; dimensions in ( ) are in millimeters.
2. Metric equivalents given for general information only, and are based upon 1.00 inches = (25.4) millimeters.
3. Unless otherwise specified, tolerances are  $\pm 0.005$  (.13) for three place decimals, and  $\pm 0.01$  (.3) for two place decimals.

**MATERIALS:**

PLASTIC PARTS - UL94V-0 thermoplastic (blue, standard) flame retardant.

CONTACTS - Phosphor bronze.

CONTACT PLATING- .000030 Gold over .000050 Nickel, Std.

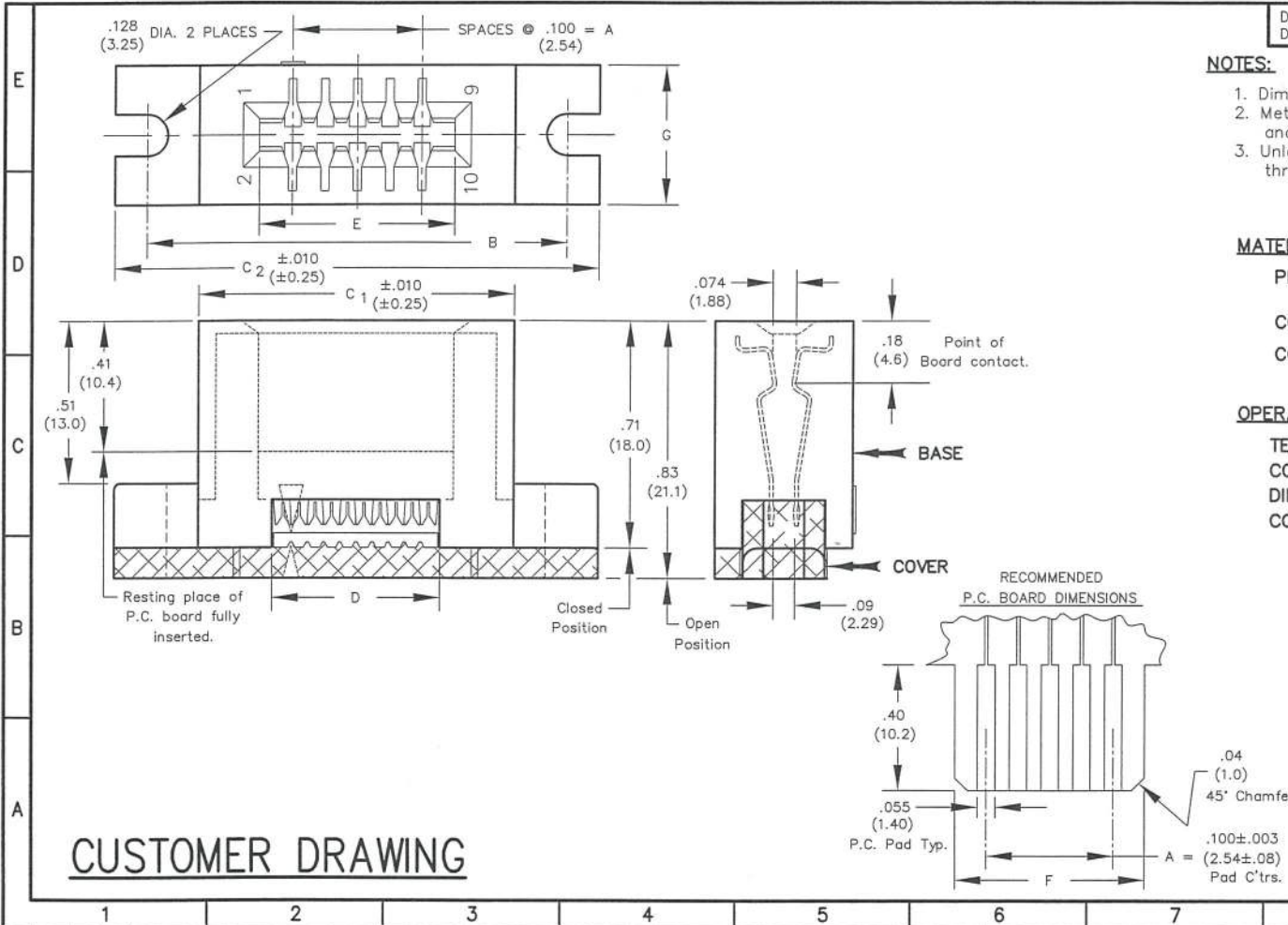
**OPERATING STANDARDS:**

TEMPERATURE RATING - 125° C

CONTACT RATING - 1 ampere.

DIELECTRIC STRENGTH - Over 500 V.D.C. at sea level.

CONDUCTORS ACCEPTED - 28-30 AWG solid or stranded.



| CONNECTOR DIMENSIONS |                  |                  |                  |                  |                  |                  |                  |               |
|----------------------|------------------|------------------|------------------|------------------|------------------|------------------|------------------|---------------|
| NO. CONTS.           | A                | B                | C <sub>1</sub>   | C <sub>2</sub>   | D                | E                | F                | G             |
| 10                   | .400<br>(10.16)  | 1.300<br>(33.02) | .976<br>(24.79)  | 1.500<br>(38.10) | .520<br>(13.21)  | .604<br>(15.34)  | .596<br>(15.14)  | .43<br>(10.9) |
| 20                   | .900<br>(22.86)  | 1.800<br>(45.72) | 1.476<br>(37.49) | 2.000<br>(50.80) | 1.020<br>(25.91) | 1.104<br>(28.04) | 1.096<br>(27.84) | .43<br>(10.9) |
| 26                   | 1.200<br>(30.48) | 2.100<br>(53.34) | 1.776<br>(45.11) | 2.300<br>(58.42) | 1.320<br>(33.53) | 1.404<br>(35.66) | 1.396<br>(35.46) | .43<br>(10.9) |
| 34                   | 1.600<br>(40.64) | 2.500<br>(63.50) | 2.176<br>(55.27) | 2.700<br>(68.58) | 1.720<br>(43.69) | 1.804<br>(45.82) | 1.796<br>(45.62) | .43<br>(10.9) |
| 40                   | 1.900<br>(48.26) | 2.800<br>(71.12) | 2.476<br>(62.89) | 3.000<br>(76.20) | 2.020<br>(51.31) | 2.104<br>(53.44) | 2.096<br>(53.24) | .43<br>(10.9) |
| 50                   | 2.400<br>(60.96) | 3.400<br>(86.36) | 2.976<br>(75.59) | 3.900<br>(99.06) | 2.520<br>(64.01) | 2.604<br>(66.14) | 2.596<br>(65.94) | .44<br>(11.2) |

**CUSTOMER DRAWING**

ATTENTION  
THIS DRAWING AND ITS ATTACHMENTS, IF ANY, ARE PROPRIETARY TO CW INDUSTRIES AND DESCRIBE DESIGNS THAT ARE CONFIDENTIAL AND MUST NOT BE DISCLOSED UNLESS AUTHORIZED, IN WRITING, BY AN OFFICER OF CW INDUSTRIES.....

**CW INDUSTRIES**  
Southampton, Pa. 18966

TOLERANCES UNLESS OTHERWISE SPECIFIED

|                             |                            |
|-----------------------------|----------------------------|
| 2 Place Decimal $\pm 0.010$ | METRIC                     |
| 3 Place Decimal $\pm 0.005$ | 1 Place Dec. $\pm 0.25$ mm |
| Angles ..... $\pm 1^\circ$  | 2 Place Dec. $\pm 0.13$ mm |

Made for: CW IND.  
Drawn by: DGW 3-02-12  
Checked by: G. Guld 3-5-12  
Approval: G. Guld 3-5-12

Title: **CARD EDGE CONNECTOR FOR .050 ctrs. rnd. cond. cable**

Division: **CONNECTOR**

Dwg. No. **CWR-171-XX-0021**

FORM-B4  
REVISIONS  
RELEASED. 3-02-12  
DGW MAR 6 5 2012

**MASTER**