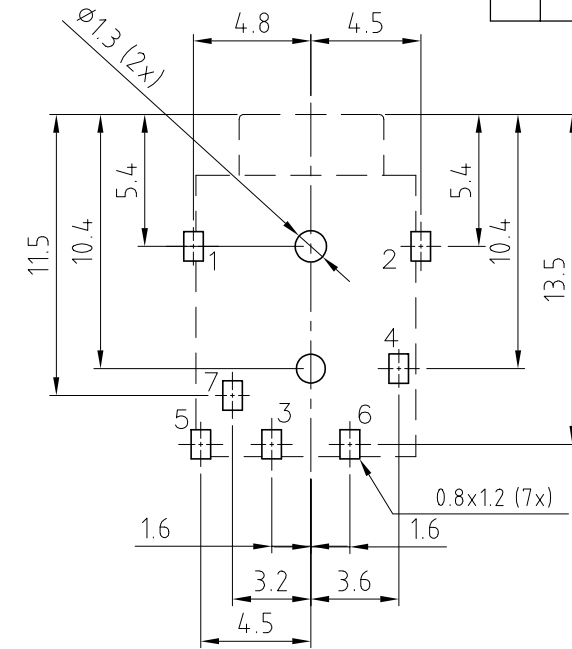
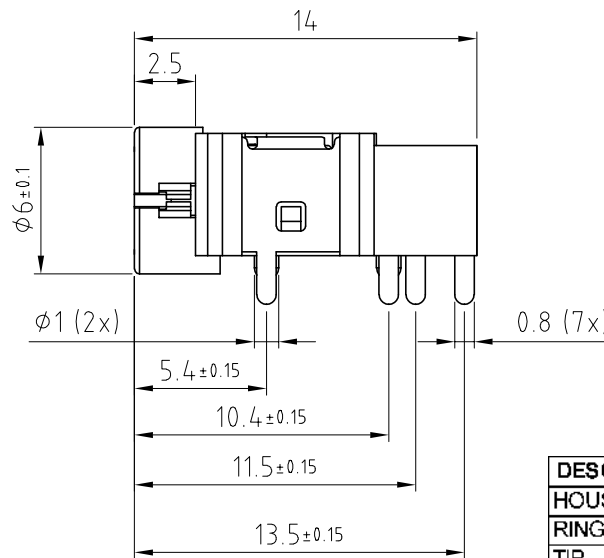
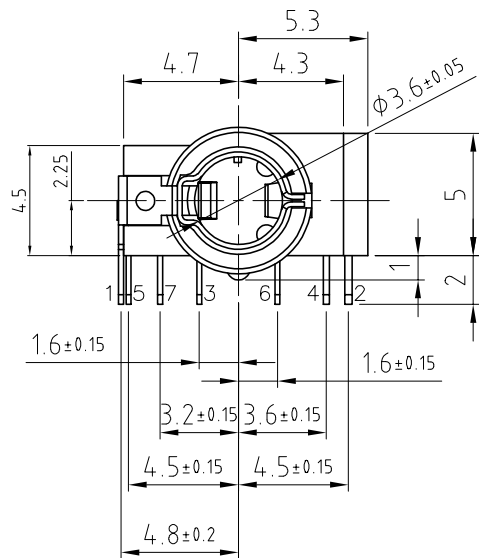
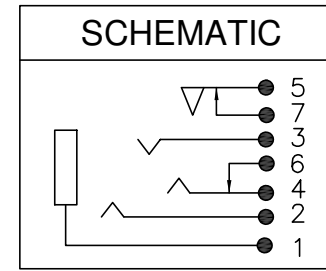
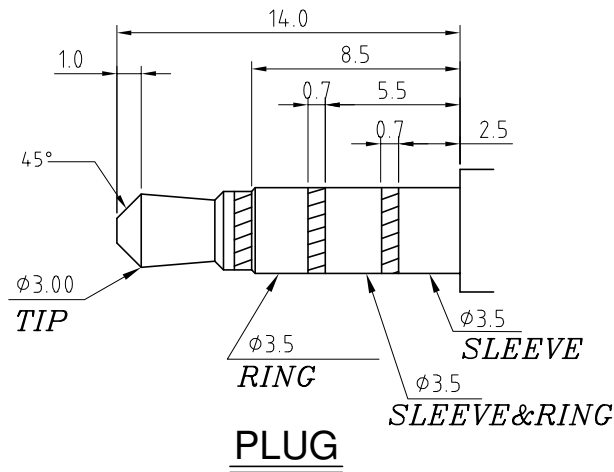
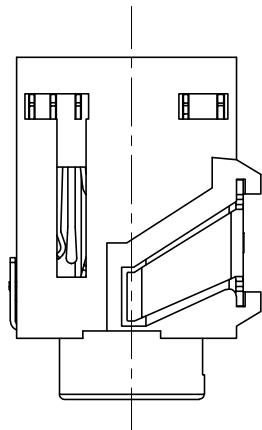


| ISS. | AMEND | DATE |
|------|---------|----------|
| 1 | ISSUED | 27/09/11 |
| 2 | UPDATED | 25/10/21 |



P.C.B LAYOUT
BOTTOM VIEW

| DESCRIPTION | MATERIAL | FINISH |
|-------------|-----------------|--------------|
| HOUSING | NYLON | BLACK |
| RING | BRASS | SILVER PLATE |
| TIP | PHOSPHOR BRONZE | SILVER PLATE |
| TIP SHUNT | PHOSPHOR BRONZE | SILVER PLATE |
| SLEEVE | PHOSPHOR BRONZE | GOLD PLATE |
| TERMINAL-1 | PHOSPHOR BRONZE | SILVER PLATE |
| TERMINAL-2 | PHOSPHOR BRONZE | SILVER PLATE |
| TERMINAL-3 | BRASS | SILVER PLATE |

RoHS
COMPLIANT

TOLERANCE
 NO DEC. PLACE ± 0.50
 1 DEC. PLACE ± 0.30
 2 DEC. PLACE ± 0.15
 HOLE Ø ± 0.10
 ANGLES ± 3°
 UNLESS OTHERWISE STATED

DO NOT SCALE

Cliff Electronic Components Ltd.
 76 Holmethorpe Avenue, Holmethorpe Industrial Estate,
 Redhill, Surrey, RH1 2PF, England, UK
 Tel: 01737-771375 Fax: 01737-766012 Website: www.cliffuk.co.uk

DIMENSIONS IN MILLIMETERS UNLESS OTHERWISE STATED. WORK TO DIMENSIONS. REMOVE ALL BURRS. IF IN DOUBT ASK.

3rd ANGLE PROJECTION:

MATERIAL: SEE TABLE

FINISH: SEE TABLE

DRAWN: T.J.O.

APPROVED: D.P.J.

TITLE: 3.5mm PHONE JACK - 4 POLE

DRWG. No. **FC68129**

FORM: A4DRWGH

Cliff Electronic Components Ltd.

76 Holmethorpe Avenue, Holmethorpe Industrial Estate,
Redhill, Surrey, RH1 2PF, England, UK
Tel: 01737-771375 Fax: 01737-766012 Website: www.cliffuk.co.uk

PART NUMBER: FC68129
DESCRIPTION: 3.5mm 4 POLE JACK SOCKET

A) SCOPE

This specification covers " 3.5Ø PHONE JACK " 3.5 Ø

B) CHARACTERISTICS

Standard atmospheric specified, measurements shall be made at temperature , humidity and air pressure within the following limit :

| | | | | |
|---------------------|---|--------|----|---------|
| Ambient temperature | : | 5 °C | to | 35 °C |
| Relative humidity | : | 45 % | to | 85 % |
| Air pressure | : | 85 Kpa | to | 106 Kpa |

| | | | | |
|-----------------------------|---|--------|----|-------|
| Operating temperature range | : | -20 °C | to | 60 °C |
| Storage temperature range | : | -25 °C | to | 70 °C |

C) ELECTRICAL CHARACTERISTICS

| ITEM | TEST CONDITIONS | SPECIFICATION |
|--|---|----------------------------|
| (C1)Rated Voltage Rated Current | | DC 16V 20mA~0.3A |
| (C2)Insulation Resistance | A voltage of 500V DC shall be applied to the terminals. After which measurement shall be made. DC 500V | 100M Ω or more ≥ 100M Ω |

Cliff Electronic Components Ltd.

76 Holmethorpe Avenue, Holmethorpe Industrial Estate,
Redhill, Surrey, RH1 2PF, England, UK
Tel: 01737-771375 Fax: 01737-766012 Website: www.cliffuk.co.uk

| ITEM | TEST CONDITIONS | SPECIFICATION |
|-------------------------|--|---|
| (C3)Contact Resistance | Measurement shall be made at 1 K Hz with 100 mA or less (With the test plug as show in item G) <1>Initial before any testing a · Pin to contact or (T-TS, R-RS) (N.C.). b · Plug shield to socket or (T,R,S,) (N.O.). <2>After life test with mating plug a · Pin to contact or (T-TS, R-RS) (N.C.). b · Plug shield to socket or (T,R,S,) (N.O.). | Initial : a · 30mΩ or Less ≤ 30mΩ b · 50mΩ or Less ≤ 50mΩ After life : a · 60mΩ or Less ≤ 60mΩ b · 100mΩ or Less ≤ 100mΩ |
| (C4)Dielectric Strength | Withstand 0.5 mA (Trip current) 500V AC(50 or 60 Hz) between any open terminal for 1 minute. (Open terminal: Between each terminal which should not make contact , before plug insert to socket R-T,R-S, after plug insert | Without distinct Damage |

Cliff Electronic Components Ltd.

76 Holmethorpe Avenue, Holmethorpe Industrial Estate,
Redhill, Surrey, RH1 2PF, England, UK
Tel: 01737-771375 Fax: 01737-766012 Website: www.cliffuk.co.uk

| | | |
|--|------------------------------|--|
| | to socket R-RS, T-TS,) | |
|--|------------------------------|--|

D) . MECHANICAL CHARACTERISTICS

| ITEM | TEST CONDITIONS | SPECIFICATION |
|---|--|--|
| (D1) Insertion force and Withdrawal force | Initial (With the test plug as show in item G) | Insertion force 0.3kgf ~ 3kgf |
| | | Withdrawal force 0.3kgf ~ 3kgf |
| | After life test 壽命試験後 (With the test plug as show in item G) | Insertion force 挿入力 0.2kgf ~ 2kgf |
| | | Withdrawal force 抜出力 0.2kgf ~ 2kgf |
| (D2) Terminal strength | Terminals must withstand a 500g minimum pull for 10 seconds before movement or break from housing occurs , but deformation of terminal is authorized . | |

E) . ENDURANCE CHARACTERISTICS

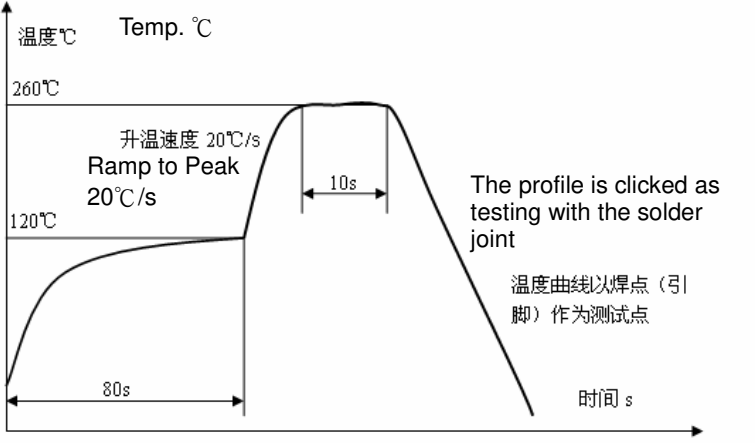
| ITEM | TEST CONDITIONS |
|----------------|---|
| (E1) Life test | The life test shall consist of 5,000 cycles of insertion and withdrawal with test plug(Show in item G), at a rate of 20 to 30 cycles per minute under no load . |

Cliff Electronic Components Ltd.

76 Holmethorpe Avenue, Holmethorpe Industrial Estate,
 Redhill, Surrey, RH1 2PF, England, UK
 Tel: 01737-771375 Fax: 01737-766012 Website: www.cliffuk.co.uk

| | |
|---------------------------------|---|
| (E2)Soldering test | The terminal of JACK tested shall be dipped into soldering flux or equivalent for 5 ~ 10 seconds and then immersed into molten solder Sn at $260 \pm 5^{\circ}\text{C}$ for 3 ± 0.5 seconds , the coverage should more than 95% . |
| (E3)Soldering heat | The terminal for a printed circuit board . Temperature of solder : $260 \pm 5^{\circ}\text{C}$ Dip time : 5 ± 1 seconds . |
| (E4) Hand Soldering Temperature | Temperature of solder : $350 \pm 10^{\circ}\text{C}$ Dip time : 3 ± 0.5 seconds . |

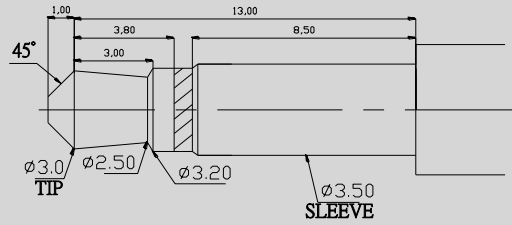
F) . DIP

| ITEM | TEST CONDITIONS |
|------------------------------------|--|
| The temperature peak without lead. |  <p>Pre-heating temperature is $25 \sim 120^{\circ}\text{C}$,for a duration about 80 seconds.</p> <p>The peak temperature is 260°C , the duration for 10 seconds.</p> |

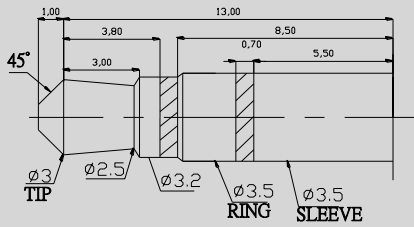
Cliff Electronic Components Ltd.

76 Holmethorpe Avenue, Holmethorpe Industrial Estate,
 Redhill, Surrey, RH1 2PF, England, UK
 Tel: 01737-771375 Fax: 01737-766012 Website: www.cliffuk.co.uk

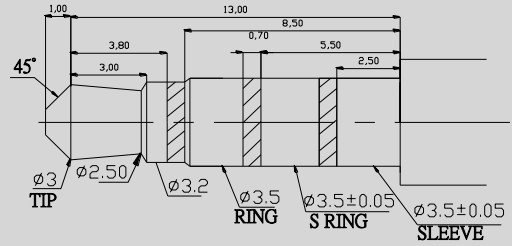
G) . MATED PLUG



MONO PLUG



STEREO PLUG



4P PLUG

| | | | | | | |
|------------|---|-------|---|--------|---|-----|
| 25/10/2021 | A | Jacky | C | Dragon | M | Roy |
| | P | | H | | A | |
| | V | | K | | K | |
| | D | | D | | E | |