



RADIALL®
COAXIAL CONNECTORS

TECHNICAL DATA

R113.312.000

Issue : 9415

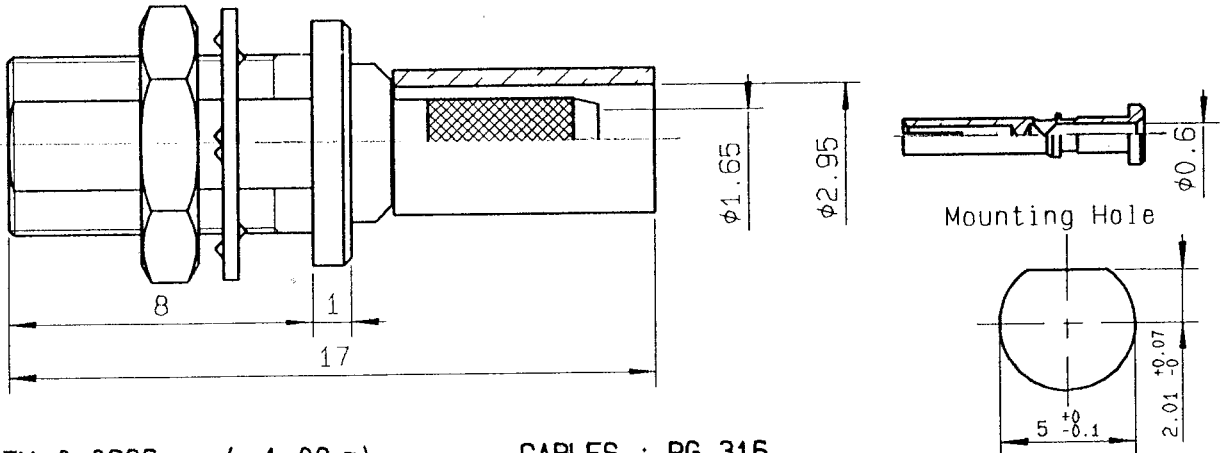
Page

STRAIGHT BULKHEAD JACK CRIMP TYPE
CABLE 2.6/50 STR

SERIES:MCX

1 / 2

93-0400-401



WEIGHT 0.0386 oz (1.08 g)

CABLES : RG 316

Sca.

CHARACTERISTICS

RECORD No CREATED

NOMINAL IMPEDANCE	50	Ω
FREQUENCY RANGE	0-3	GHz
TEMPERATURE RATING	-55/+165	$^{\circ}C$
VSWR	1.50	Max
RF INSERTION LOSS	-0.1 \sqrt{f}	F dB Max1
VOLTAGE RATING	250	Vrms Max1
DIELECTRIC WITHSTANDING VOLTAGE	750	Vrms mini
INSULATION RESISTANCE	1000	M Ω mini
HERMETIC SEAL	NA	cc/s Atm.cm3/s
LEAKAGE (pressurized only)	NA	psi MPa

STANDARDISATION	-	-
CABLE RETENTION	11.9	lb mini
CENTER CONTACT RETENTION	53	N
Axial force - mating end	NA	lb mini
Axial force - opposite end	NA	lb mini
Torque (Min)	NA	inch.oz cm.N
RECOMMENDED TORQUES		
Mating	NA	inch.lb cm.N
Panel nut	5.316	inch.lb cm.N
Clamp nut	60	inch.lb cm.N

CONSTRUCTION

CONNECTOR PARTS	MATERIALS	FINISH
BODY	BRASS	GOLD
OUTER CONTACT	-	-
CENTER CONTACT	BERYLLIUM COPPER	GOLD
INSULATOR	PTFE	-
FERRULE	BRASS	GOLD
-	-	-
-	-	-
-	-	-
-	-	-

ISSUE	REVISION No	DESCRIPTION	BY	DATE
.
.
.

Initiated on 15/04/94

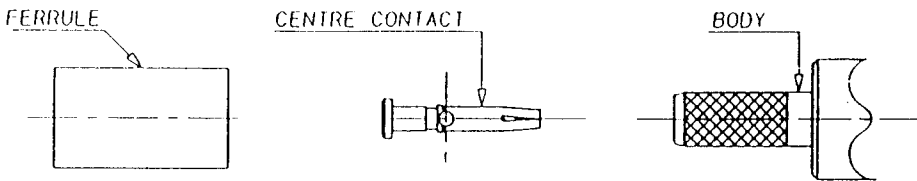
The information given here is subject to change without notice. Design changes may be in order to improve the product.



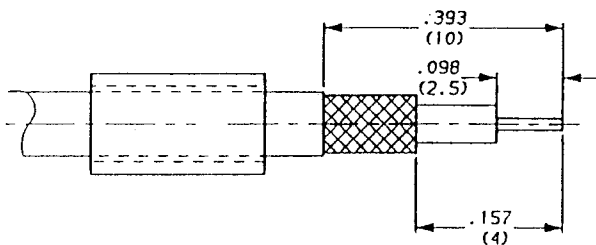
Superseded on - - - -

MASTRIANO.J

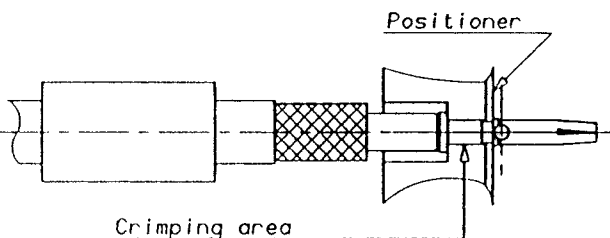
Straight bulkhead jack, crimping-type
- cable 2,6/50



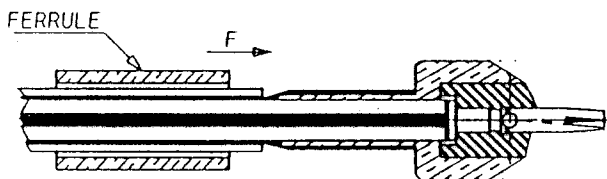
- 1-1 To slide the ferrule on the cable
- To slide the nut on the cable
- 1-2 Cable stripping



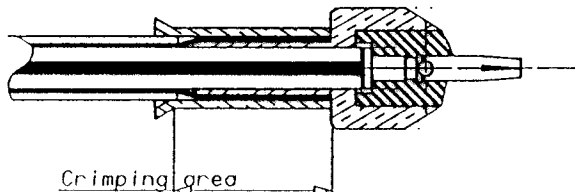
- 2-1 To place positioner in centre contact groove
 - 2-2 To crimp centre contact
- Crimping tool R 282 271
square .028 (0.72)



- 3-1 To open the braid
- 3-2 To slide body under braid
- 3-3 To slide the ferrule on braid according to F direction



- 4-1 To crimp the ferrule
- Crimping tool R 282 271
Hex : .127 (3.25)



ISSUE	REVISION No	DESCRIPTION	BY	DATE

Initiated on 15-04-94

The information given here is subject to change without notice. Design changes may be in order to improve the product.



Superseded on _____