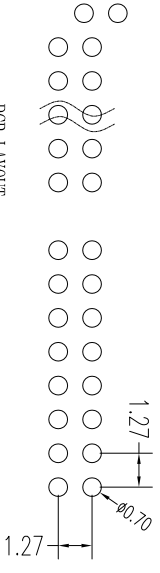
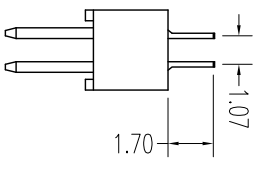
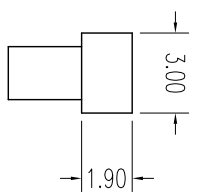
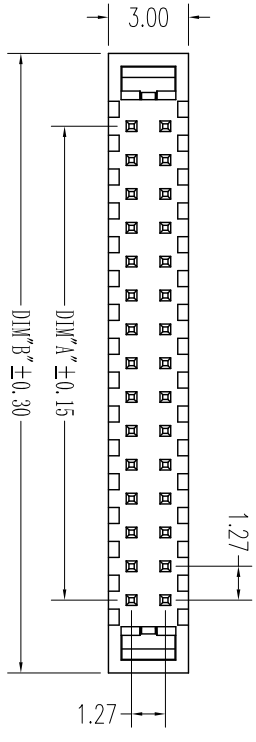
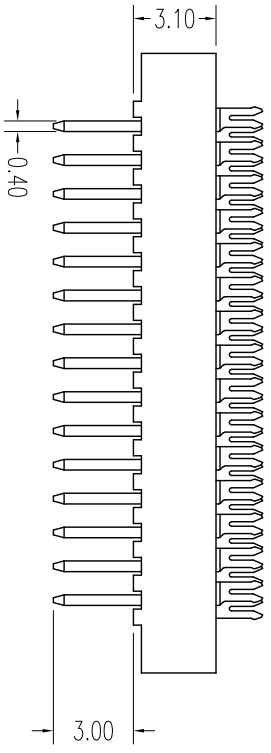
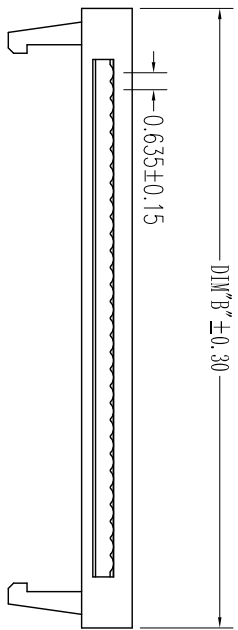
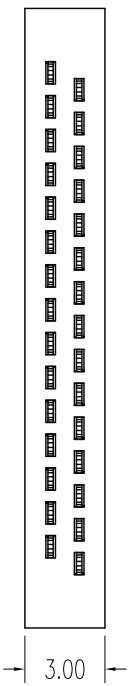
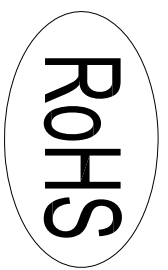


REV.	DESCRIPTION	DATE
A	RELEASE	2012.11.12



NOTES:
 Insulator Material: PBT, UL 94V-0
 Contact Plating: Gold flash over nickel
 Contact Material: Brass
 Current Rating : 1A AC,DC
 Contact Resistance: 20MΩ Max.
 Dielectric Withstanding: AC 500V
 Insulator Resistance: 1000MΩ Min.
 Operating Temp.: -40°C~+105°C

NUMBER OF POSITIONS	DIMENSION	
	A	B
06	2.54	8.00
08	3.81	9.27
10	5.08	10.54
12	6.35	11.81
14	7.62	13.08
16	8.89	14.35
20	11.43	16.89
24	13.97	19.43
26	15.24	20.70
30	17.78	23.24
34	20.32	25.78
40	24.13	29.59
44	26.67	32.13
50	30.48	35.94
60	36.83	42.29
64	39.37	44.83

UNLESS TOLERANCE	
GENERAL	ANGLE
X ± 0.30	X° ± 3.0°
.X ± 0.20	.X° ± 2.0°
.XX ± 0.15	.XX° ± 1.0°
.XXX ± 0.10	.XXX° ± 0.5°

DRAW	BY	DESIGN	BY	CHECK	BY	APPROVE	BY
SCALE	1:1	SHEET	1/1	UNIT	MM	SCALE	1:1

Cnc Tech, LLC

Port NO.
3240-XX-00

DRW NO.: REV: A