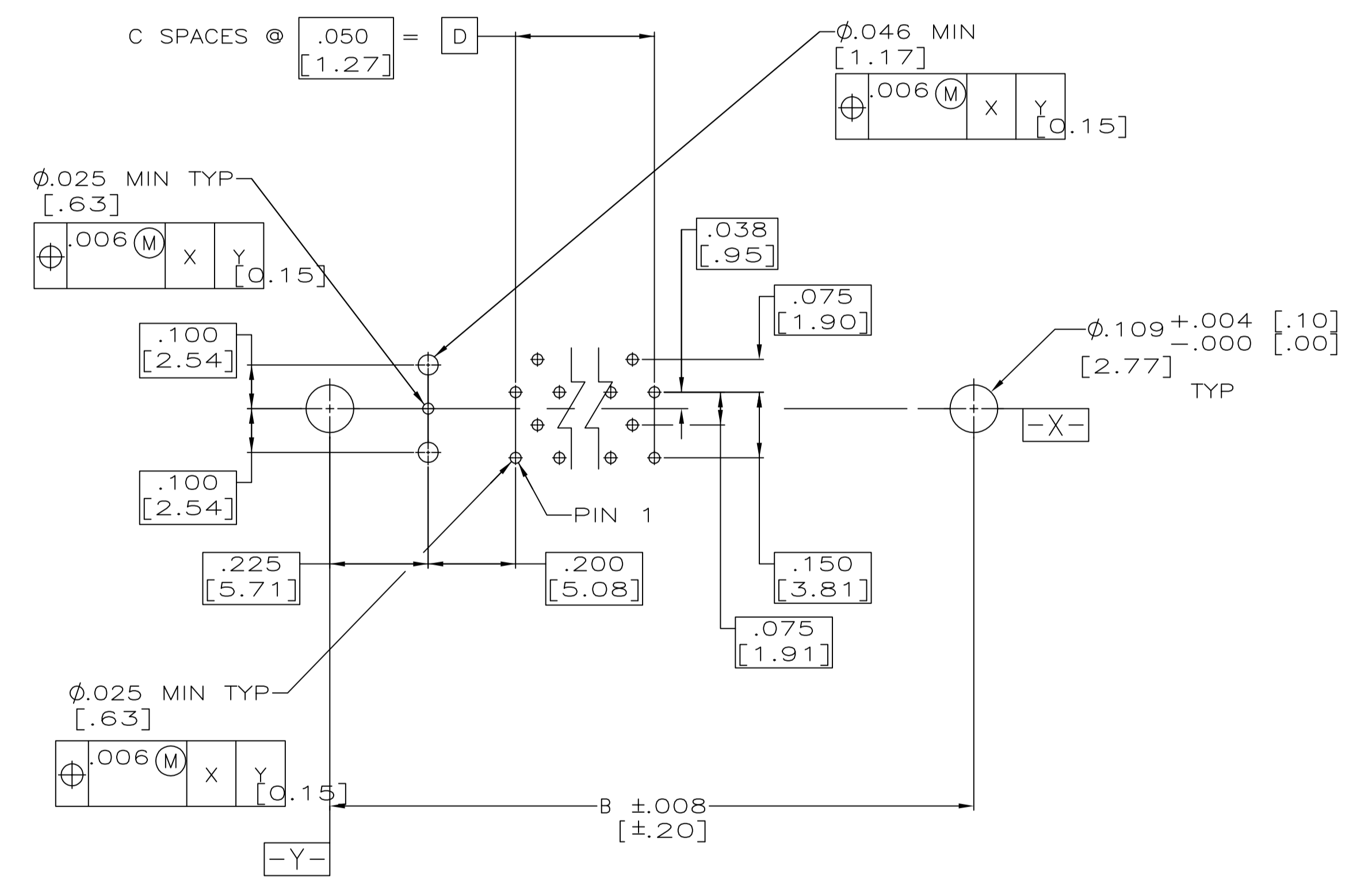
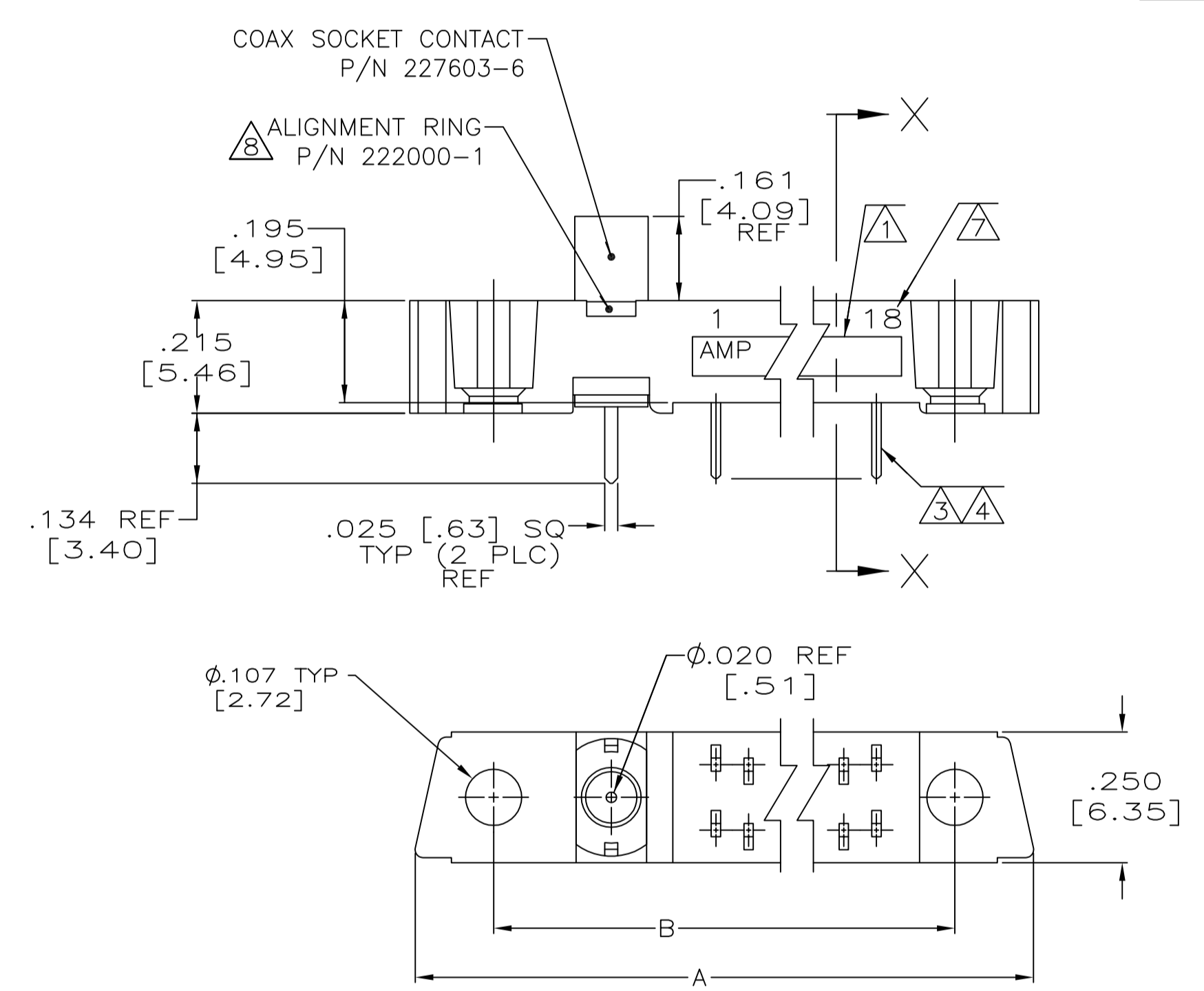
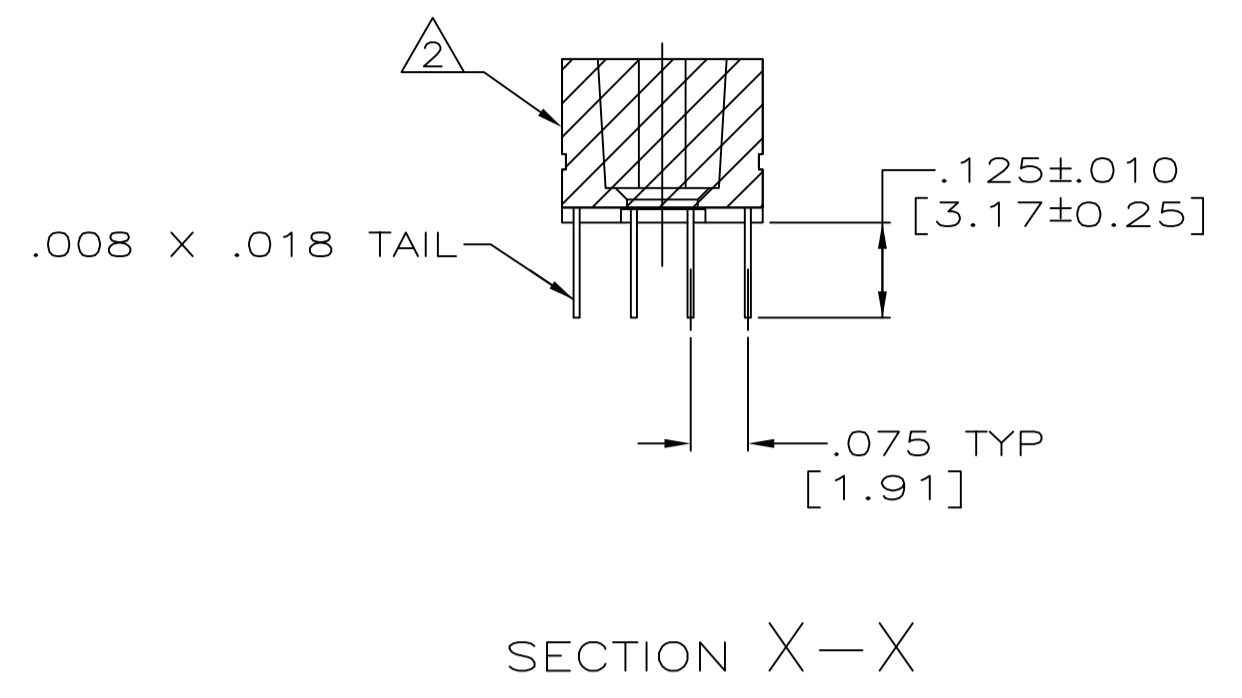
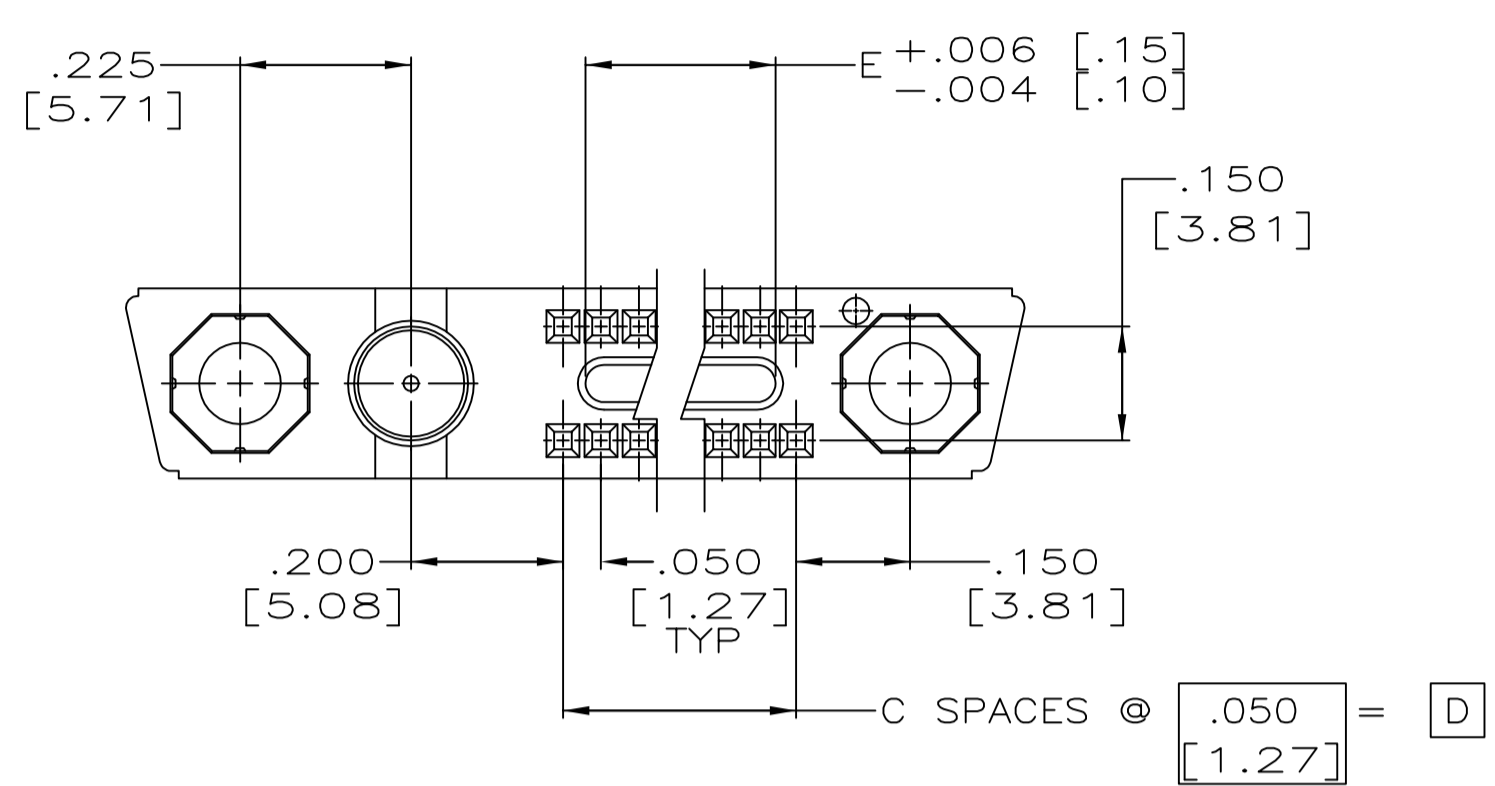


REVISIONS				
P	LTR	DESCRIPTION	DATE	OWN
E		REVISED PER ECO-16-017894	26APR2017	PHM CT



- ① AMP, AMP PART NO. AND DATE CODE MARKED IN THIS APPROXIMATE AREA.
- ② HOUSING MATERIAL: LIQUID CRYSTAL POLYMER PER MIL-M-24519, GLCP-30F; COLOR: GRAY.
- ③ CONTACT: MATERIAL = PHOS BRONZE
- ④ PLATED .000030 GOLD IN THE CONTACT AREA, .000100 MIN TIN LEAD ON THE TAILS, ALL OVER .000050 NICKEL UNDER PLATE.
- ⑤ MICRO-MINATURE COAX CONTACT PER AMP DATA SHEET 80-600, PC BOARD MOUNTED CONTACTS MUST BE MATED BEFORE SOLDERING.

- 6. GROUP "A" INSPECTION PER MIL-C-55302 PERFORMED.
- ⑥ NUMBERS INDICATING END POSITIONS MARKED THIS SIDE ONLY.
- ⑦ ALIGNMENT RING MUST BE FLUSH TO BELOW MATING FACE.
- 9. MEETS SEALING EFFECTIVENESS TEST REQUIREMENT.

.700 [17.78]	.850 [21.59]	17	1.425 [36.20]	1.715 [43.56]	1	36	449874-1
E	D	C	B	A	NUMBER OF COAX POS.	NUMBER OF BOX POS.	PART NUMBER
THIS DRAWING IS A CONTROLLED DOCUMENT.							
DIMENSIONS:				TOLERANCES UNLESS OTHERWISE SPECIFIED:			
INCHES:				MILS:			
0 PLC ± -				0.010 [0.25]			
1 PLC ± -				± -			
2 PLC ± -				± -			
3 PLC ± -				± -			
4 PLC ± -				± -			
ANGLES ± -				± -			
FINISH:				FINISH:			
② ③				④			
MATERIAL:				MATERIAL:			
② ③				④			
CUSTOMER DRAWING				CUSTOMER DRAWING			
SCALE 4:1				SCALE 4:1			
SHEET 1 OF 1				SHEET 1 OF 1			
REV E				REV E			